

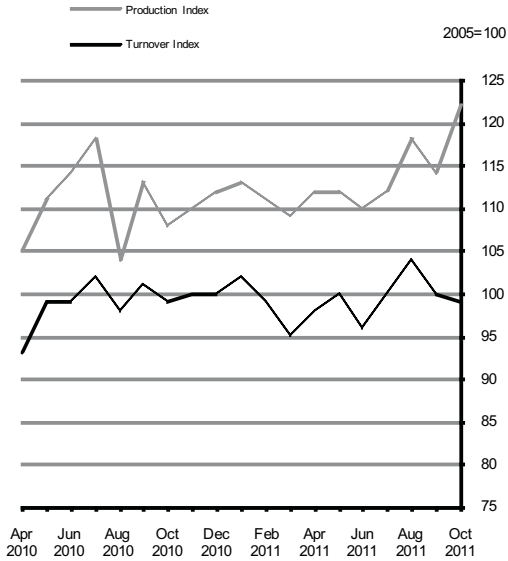


Industrial Production & Turnover

October 2011 (*Provisional*) and September 2011 (*Final*)

Manufacturing Industries

Seasonally adjusted



Manufacturing Industries (*Seasonally adjusted*)

(Base: year 2005=100)

	Production Index	Turnover Index
October 2010	107.9	99.1
September 2011	114.1	100.4
October 2011	122.4	99.2
Monthly % change	7.3%	-1.2%
Annual % change	13.4%	0.1%
May 2011 – Jul 2011	111.2	98.6
Aug 2011 – Oct 2011	118.1	101.3
% change	6.2%	2.7%

Published by the Central Statistics Office, Ireland.

Ardee Road
Dublin 6
Ireland

Skehard Road
Cork
Ireland

LoCall: 1890 313 414 (ROI)
0808 2347 581 (UK/NI)

Tel: +353 1 498 4000
Fax: +353 1 498 4229

Tel: +353 21 453 5000
Fax: +353 21 453 5555

Both offices may be contacted through any of these telephone numbers.

CSO on the Web: www.cso.ie
and go to

Business Sectors: Industry

Director General: Gerard O'Hanlon

Enquiries:

Monthly statistics Results, Analysis and
 Publications Section, ext 5211
 sts_rap@cso.ie
General queries Information Section, ext 5021
 information@cso.ie

Monthly Production up 7.3% in October 2011

Production for Manufacturing Industries for October 2011 was 7.3% higher than in September 2011 (*see above and Table 1*). On an annual basis production for October 2011 increased by 13.4% when compared with October 2010. The seasonally adjusted volume of industrial production for Manufacturing Industries for the three month period August 2011 to October 2011 was 6.2% higher than in the preceding three month period (*see above and table 4*).

The "Modern" Sector, comprising a number of high-technology and chemical sectors, showed a monthly increase in production for October 2011 of 9.2% while a increase of 0.9% was recorded in the "Traditional" Sector (*see table 2*).

The seasonally adjusted industrial turnover index for Manufacturing Industries was 1.2% lower in October 2011 when compared with September 2011 (*see above and table 7*). On an annual basis turnover was 0.1% higher when compared with October 2010.

For more information contact Stephanie Kelleher at 021 453 5123, Sean Hurley at 021 453 5242 or Alan Finlay at 021 453 5211.

Table 1 Volume Indices of Production¹

Base year 2005=100

Period	Manufacturing Industries NACE 10 - 33			Industries NACE 05 - 35		
	Seasonally adjusted					
	Index	% change on preceding period	Annual % change	Index	% change on preceding period	Annual % change
2005	100.0		4.1	100.0		4.0
2006	103.3		3.3	103.0		3.0
2007	109.0		5.5	108.4		5.2
2008	105.8		-2.9	105.8		-2.4
2009	101.7		-3.9	101.2		-4.3
2010	110.1		8.3	109.0		7.7
2009 Quarter 1	106.2	1.5	-0.5	105.6	0.9	-0.6
2	104.8	-1.3	-0.7	104.0	-1.5	-1.6
3	100.0	-4.6	-7.3	99.5	-4.3	-7.6
4	96.4	-3.6	-7.8	96.3	-3.3	-8.0
2010 Quarter 1	108.5	12.5	2.2	107.4	11.6	1.7
2	110.0	1.4	5.0	109.2	1.6	4.9
3	112.1	1.9	12.1	110.8	1.5	11.3
4	110.3	-1.6	14.4	109.1	-1.6	13.3
2011 Quarter 1	111.2	0.9	2.5	109.7	0.6	2.1
2	111.1	-0.1	1.0	109.2	-0.4	0.1
3	114.7	3.2	2.3	113.1	3.5	2.0
2009 January	106.1	4.5	-0.9	105.6	4.1	-0.9
February	104.0	-2.0	-3.2	103.8	-1.7	-2.9
March	108.4	4.3	2.7	107.4	3.5	2.1
April	106.9	-1.4	3.5	106.1	-1.3	2.1
May	102.9	-3.7	-5.5	102.3	-3.6	-5.9
June	104.7	1.8	0.0	103.8	1.5	-0.9
July	104.4	-0.3	0.6	103.2	-0.6	-0.7
August	93.5	-10.4	-16.9	94.0	-9.0	-16.4
September	101.2	8.2	-6.3	100.7	7.2	-6.2
October	100.2	-1.0	-2.3	99.8	-0.9	-3.0
November	91.6	-8.6	-16.8	91.9	-7.9	-16.5
December	97.4	6.4	-4.1	97.1	5.7	-4.3
2010 January	107.4	10.3	1.3	106.5	9.6	0.9
February	108.3	0.8	4.2	107.4	0.8	3.5
March	109.6	1.2	1.2	108.3	0.9	0.8
April	105.5	-3.8	-1.3	104.9	-3.2	-1.1
May	110.9	5.2	7.8	110.1	5.0	7.6
June	113.6	2.4	8.4	112.4	2.1	8.2
July	118.5	4.3	13.4	116.3	3.6	12.7
August	104.1	-12.1	11.3	104.0	-10.6	10.7
September	113.3	8.8	12.0	111.7	7.4	10.9
October	107.9	-4.7	7.7	106.7	-4.4	7.0
November	110.3	2.2	20.5	109.2	2.3	18.7
December	112.4	1.9	15.4	111.2	1.8	14.4
2011 January	113.0	0.6	5.2	111.5	0.3	4.7
February	111.3	-1.5	2.8	109.6	-1.7	2.1
March	109.4	-1.8	-0.2	108.1	-1.4	-0.2
April	111.5	2.0	5.8	109.5	1.3	4.4
May	111.6	0.1	0.6	109.9	0.3	-0.2
June	110.2	-1.3	-3.0	108.4	-1.4	-3.5
July	111.7	1.4	-5.7	110.2	1.7	-5.2
August	118.1	5.8	13.4	116.6	5.8	12.1
September	114.1	-3.4	0.7	112.2	-3.8	0.4
October	122.4	7.3	13.4	119.6	6.6	12.1

¹ All data for latest month are provisional

Table 2 Volume Indices of Production¹ for "Modern"² and "Traditional" Sectors

Base year 2005=100

Period	"Modern" Sector			"Traditional" (All Other Sectors)		
	Seasonally adjusted					
	Index	% change on preceding period	Annual % change	Index	% change on preceding period	Annual % change
2005	100.0		5.3	100.0		0.5
2006	104.1		4.1	101.6		1.6
2007	111.2		6.8	104.7		3.0
2008	109.8		-1.2	100.4		-4.1
2009	112.7		2.6	86.2		-14.1
2010	124.7		10.7	88.3		2.5
2009 Quarter 1	117.5	6.6	8.2	89.1	-8.4	-13.8
2	117.0	-0.4	8.1	86.4	-3.0	-15.4
3	111.7	-4.6	-2.4	84.8	-1.9	-14.3
4	105.0	-6.0	-4.7	85.1	0.3	-12.5
2010 Quarter 1	122.6	16.7	4.3	86.1	1.1	-3.4
2	124.3	1.4	6.2	88.4	2.7	2.3
3	128.6	3.5	15.1	89.6	1.4	5.7
4	124.3	-3.4	18.3	89.2	-0.5	4.8
2011 Quarter 1	124.8	0.4	1.8	88.8	-0.5	3.1
2	125.3	0.4	0.8	87.5	-1.4	-1.0
3	131.6	5.1	2.4	90.7	3.6	1.1
2009 January	116.5	8.0	6.3	90.9	-1.1	-11.8
February	115.1	-1.3	5.8	88.3	-2.9	-15.0
March	120.8	5.0	12.7	88.1	-0.2	-14.7
April	120.1	-0.6	15.8	88.3	0.2	-13.5
May	113.1	-5.8	-0.7	86.2	-2.4	-15.7
June	117.9	4.3	9.8	84.9	-1.5	-16.8
July	118.6	0.6	12.0	85.1	0.2	-15.8
August	102.4	-13.6	-18.0	85.4	0.3	-11.2
September	112.8	10.1	-1.0	84.0	-1.6	-15.5
October	110.2	-2.3	4.1	86.8	3.3	-13.2
November	98.2	-10.9	-16.4	84.5	-2.7	-15.5
December	106.6	8.6	-1.2	84.0	-0.5	-8.6
2010 January	120.8	13.3	3.6	85.4	1.6	-6.1
February	123.0	1.8	6.9	85.9	0.6	-2.7
March	123.8	0.7	2.4	86.9	1.1	-1.4
April	118.6	-4.2	-1.2	86.9	0.0	-1.6
May	126.1	6.3	11.5	88.8	2.2	3.1
June	127.9	1.5	8.5	89.5	0.7	5.4
July	139.2	8.8	17.3	88.2	-1.4	3.6
August	118.7	-14.7	15.9	89.5	1.5	4.9
September	127.4	7.3	12.9	91.2	1.8	8.5
October	119.3	-6.3	8.2	89.0	-2.4	2.5
November	125.8	5.4	28.1	89.3	0.3	5.6
December	127.4	1.3	19.5	89.4	0.2	6.4
2011 January	127.3	0.0	5.4	89.5	0.1	4.7
February	124.8	-2.0	1.5	88.9	-0.6	3.5
March	122.5	-1.8	-1.0	88.0	-1.0	1.3
April	125.2	2.2	5.6	87.6	-0.5	0.8
May	124.4	-0.7	-1.4	91.9	4.9	3.5
June	126.2	1.5	-1.3	83.1	-9.6	-7.1
July	129.7	2.7	-6.8	84.6	1.9	-4.0
August	134.4	3.7	13.3	98.6	16.5	10.2
September	130.6	-2.8	2.5	88.4	-10.4	-3.0
October	142.6	9.2	19.6	89.2	0.9	0.2

¹ All data for latest month are provisional

² The "Modern" Sector includes the following industrial sectors :

- NACE 20 Chemicals and chemical products
- 21 Basic pharmaceutical products and preparations
- 26 Computers, electronic and optical products
- 27 Electrical equipment
- 1820 Reproduction of recorded media
- 3250 Medical and dental instruments and supplies

Table 3 Employment Information on the "Modern" Sector

Industrial Sector	Weighting base		Employment			
	NACE Rev. 2	Year 2005 Gross value added € Million	2010 Q3 ³ ('000)	2010 Q4 ³ ('000)	2011 Q1 ³ ('000)	2011 Q2 ³ ('000)
Modern Sector		17,492.2	66.3	63.9	64.7	65.8
Chemicals and chemical products; Basic pharmaceutical products & preparations; Reproduction of recorded media ¹ ; Medical and dental instruments and supplies ¹	20, 21, 1820, 3250	13,139.8	43.1	41.8	41.8	42.5
Computers, electronic and optical products; Electrical equipment	26, 27	4,352.2	23.2	22.1	22.9	23.3
All Other Sectors		13,301.9	135.2	136.2	129.6	130.1
Industries (B - E) NACE 5 - 35		30,794.1²	201.5	200.1	194.3	195.9

¹ Employment data estimated based on Nace 18 and 32 (Source: Earnings, Hours and Employment Costs Survey data, CSO).

² Gross Value Added is for Industries (B -D) NACE 5 - 35 (Source: Census of Industrial Production 2005, CSO).

³ Preliminary

Table 4 Volume Indices of Production for Industrial Sectors - Provisional Results

Base year 2005=100

Industrial Sector	NACE	Year 2005 Gross value added EUR million	Index - Seasonally adjusted		Index - Seasonally adjusted			
			October 2011		Aug 2011 - Oct 2011			
			Index preceding month	% change on preceding month	Index preceding 3 months	% change on preceding 3 months		
Food products and beverages	10-11	5,258.6	106.7	2.7	6.2	111.3	14.7	10.9
Food products	10	4,475.2	102.2	5.0	5.9	107.1	17.7	9.8
Meat and meat products	101	618.3	86.4	7.0	8.7	80.0	5.1	0.1
Dairy products	105	515.7	106.0	-2.5	-15.1	110.0	-8.6	-10.7
Bakery and farinaceous products	107	234.9	89.5	0.3	5.8	89.9	-1.7	10.3
Grain mill and starch products; prepared animal feeds	106,109	192.7	97.6	5.5	6.6	93.6	-3.8	-4.6
Other foods	102-104,108	2,913.6	106.6	7.0	10.6	115.9	34.0	18.0
Beverages	11	783.4	130.9	-3.6	7.5	134.1	2.1	15.1
Textiles and wearing apparel	13-14	202.7	26.6	-10.3	-43.1	30.2	-16.6	-38.7
Textiles	13	98.3	36.7	-12.5	-44.1	40.9	-7.7	-39.4
Wearing apparel	14	104.4	18.4	1.5	-41.1	20.2	-30.6	-37.8
Leather and related products	15	7.3	124.8	-6.3	11.3	132.6	-2.2	18.5
Wood and wood products, except furniture	16	350.3	48.4	3.3	1.0	47.5	-1.2	-1.2
Paper and paper products; printing and reproduction of recorded media	17-18	665.0	68.8	-1.3	-16.5	70.2	0.9	-12.3
Paper and paper products	17	213.7	67.3	0.7	5.9	66.4	-0.6	1.7
Printing and reproduction of recorded media	18	451.3	69.8	-2.3	-23.3	71.9	2.0	-17.0

Table 4 Volume Indices of Production for Industrial Sectors - Provisional Results (continued)

Base year 2005=100

October 2011

Industrial Sector	Weighting base		Index - Seasonally adjusted					
	NACE	Year 2005 Gross value added EUR million	October 2011			Aug 2011 - Oct 2011		
			Index	% change on preceding month	Annual % change	Index	% change on preceding 3 months	Annual % change
Chemicals and pharmaceuticals	20-21	10,897.7	180.1	12.0	28.5	170.1	10.8	17.2
Chemicals and chemical products	20	816.8	167.0	12.7	25.0	157.9	5.2	24.6
Basic pharmaceutical products and preparations	21	10,080.9	181.5	12.0	28.8	171.2	11.3	16.8
Rubber and plastic products	22	531.5	66.6	-5.8	-15.8	69.7	-9.2	-14.7
Other non-metallic mineral products	23	863.9	37.6	-2.0	-19.4	38.0	0.5	-18.1
Basic metals and fabricated metal products	24-25	701.6	68.0	0.8	-9.7	68.8	-9.5	-7.9
Basic metals	24	137.2	88.2	9.9	2.0	83.5	1.0	-7.4
Fabricated metal products, except machinery and equipment	25	564.4	64.4	-1.4	-13.1	66.1	-9.6	-8.2
Computer, electronic, optical and electrical equipment	26-27	4,352.2	53.2	-8.3	-9.4	55.0	-2.0	-7.4
Computer, electronic and optical products	26	4,017.5	55.7	-8.6	-8.6	57.8	1.9	-6.8
Electronic components and boards	261	2,003.8	57.4	-1.5	-15.0	56.7	3.3	-18.1
Computers and peripheral equipment	262	1,637.9	38.4	-20.9	-6.4	42.3	-2.1	2.2
Other electronic and optical products	263-268	375.8	120.8	4.9	11.0	120.8	3.2	14.5
Electrical equipment	27	334.7	40.7	-2.7	-19.9	40.6	-4.7	-15.6

Table 4 Volume Indices of Production for Industrial Sectors - Provisional Results (continued)

Base year 2005=100

October 2011

Industrial Sector	NACE	Weighting base	Index - Seasonally adjusted					
		Year 2005 Gross value added EUR million	October 2011			Aug 2011 - Oct 2011		
			Index	% change on preceding month	Annual % change	Index	% change on preceding 3 months	Annual % change
Machinery and equipment, not elsewhere classified	28	910.0	103.0	12.4	-4.2	98.8	-6.0	-3.1
Transport equipment	29-30	406.1	85.6	-1.3	-8.4	87.8	1.6	4.5
Tobacco; coke and refined petroleum products; furniture	12,19,31	402.6	57.4	-0.5	-3.8	58.1	-4.3	-4.4
Other manufacturing	32	2,171.5	138.6	7.5	0.9	134.1	3.9	-3.0
Repair and installation of machinery and equipment	33	69.3	168.5	33.3	64.9	143.4	2.9	41.8
Electricity, gas, steam and air conditioning supply	35	2,379.1	103.5	0.3	-0.2	104.9	-0.1	0.5
Manufacturing industries	10-33	27,790.5	122.4	7.3	13.4	118.1	6.2	8.8
Mining and quarrying	05-09	624.5	56.6	4.3	-15.5	56.6	-11.0	-17.3
Transportable goods industries	05-33	28,415.0	121.0	7.2	13.0	116.9	6.5	8.4
Industries	05-35	30,794.1	119.6	6.6	12.1	116.0	5.9	7.8
<i>of which:</i> Energy producing industries		2,526.5	102.1	-1.2	-0.4	103.6	1.0	-0.4
Capital goods		5,550.9	96.4	3.3	0.1	95.5	1.7	0.1
Intermediate products		5,933.9	57.6	-1.1	-12.5	58.0	-2.7	-14.6
Consumer goods		16,782.8	152.1	9.4	21.4	146.3	10.5	14.9
<i>of which:</i> Durable consumer goods		515.0	74.1	1.3	15.5	73.4	1.5	12.4
Non-durable consumer goods		16,267.8	154.7	9.5	21.5	148.6	10.6	15.0

Table 4a Volume Indices of Production for Industrial Sectors - Final Results

Base year 2005=100

September 2011

Industrial Sector	NACE	Weighting base Year 2005 Gross value added EUR million	Index - Seasonally adjusted					
			September 2011			Jul 2011 - Sep 2011		
			Index	% change on preceding month	Annual % change	Index	% change on preceding 3 months	Annual % change
Food products and beverages	10-11	5,258.6	103.9	-15.6	1.9	106.4	5.8	5.8
Food products	10	4,475.2	97.3	-19.8	-3.7	101.4	5.8	3.7
Meat and meat products	101	618.3	80.7	9.8	2.4	76.8	0.1	-4.8
Dairy products	105	515.7	108.8	-5.4	-13.8	113.5	-7.0	-3.1
Bakery and farinaceous products	107	234.9	89.2	-2.0	12.2	91.1	-0.2	14.6
Grain mill and starch products; prepared animal feeds	106,109	192.7	92.4	1.3	-9.1	92.3	-5.8	-9.0
Other foods	102-104,108	2,913.6	99.6	-29.2	-3.0	105.8	12.0	7.0
Beverages	11	783.4	135.8	0.4	30.3	134.5	4.8	16.3
Textiles and wearing apparel	13-14	202.7	29.6	-13.2	-41.7	32.8	-17.0	-33.1
Textiles	13	98.3	41.9	-4.3	-36.9	43.6	-13.0	-34.5
Wearing apparel	14	104.4	18.1	-24.3	-49.4	22.1	-26.8	-30.5
Leather and related products	15	7.3	133.1	-4.4	22.5	135.4	1.1	22.5
Wood and wood products, except furniture	16	350.3	46.9	-1.0	-2.3	47.5	-0.2	-1.9
Paper and paper products; printing and reproduction of recorded media	17-18	665.0	69.7	-3.4	-9.0	70.8	1.7	-9.7
Paper and paper products	17	213.7	66.9	2.7	1.5	65.3	-5.5	-1.2
Printing and reproduction of recorded media	18	451.3	71.4	-4.2	-13.0	73.0	4.1	-13.0

Table 4a Volume Indices of Production for Industrial Sectors - Final Results (continued)

Base year 2005=100

September 2011

Industrial Sector	NACE	Weighting base	Index - Seasonally adjusted					
		Year 2005 Gross value added EUR million	September 2011			Jul 2011 - Sep 2011		
			Index	% change on preceding month	Annual % change	Index	% change on preceding 3 months	Annual % change
Chemicals and pharmaceuticals	20-21	10,897.7	160.8	-5.5	5.6	162.0	4.8	6.2
Chemicals and chemical products	20	816.8	148.2	-7.1	18.5	155.9	7.3	28.9
Basic pharmaceutical products and preparations	21	10,080.9	161.9	-5.3	4.7	162.5	4.6	4.6
Rubber and plastic products	22	531.5	70.8	-0.8	-19.4	73.2	-4.2	-9.9
Other non-metallic mineral products	23	863.9	38.4	1.4	-15.3	38.4	1.3	-14.7
Basic metals and fabricated metal products	24-25	701.6	67.5	-4.7	-9.0	70.3	-11.8	-3.8
Basic metals	24	137.2	80.3	-2.5	-10.4	83.9	-0.6	-4.2
Fabricated metal products, except machinery and equipment	25	564.4	65.3	-4.8	-8.7	67.5	-11.6	-3.6
Computer, electronic, optical and electrical equipment	26-27	4,352.2	58.0	8.1	-0.6	55.4	-2.1	-8.7
Computer, electronic and optical products	26	4,017.5	61.0	7.8	0.0	58.0	2.8	-7.9
Electronic components and boards	261	2,003.8	58.2	6.6	-15.3	56.3	-0.5	-19.0
Computers and peripheral equipment	262	1,637.9	48.5	22.6	19.8	42.7	1.7	0.9
Other electronic and optical products	263-268	375.8	115.2	-8.9	6.0	118.9	-2.3	14.1
Electrical equipment	27	334.7	41.8	6.6	-8.4	40.8	-7.5	-16.9

Table 4a Volume Indices of Production for Industrial Sectors - Final Results (continued)

Base year 2005=100

September 2011

Industrial Sector	NACE	Weighting base	Index - Seasonally adjusted					
		Year 2005 Gross value added EUR million	September 2011			Jul 2011 - Sep 2011		
			Index	% change on preceding month	Annual % change	Index	% change on preceding 3 months	Annual % change
Machinery and equipment, not elsewhere classified	28	910.0	91.6	-10.4	-10.2	99.9	-1.7	6.1
Transport equipment	29-30	406.1	86.7	-4.5	0.1	87.9	0.9	10.4
Tobacco; coke and refined petroleum products; furniture	12,19,31	402.6	57.6	-2.8	-3.4	60.3	2.9	-0.7
Other manufacturing	32	2,171.5	129.0	-4.5	-7.5	132.1	2.8	-7.0
Repair and installation of machinery and equipment	33	69.3	126.4	-8.0	38.7	138.1	-2.8	33.0
Electricity, gas, steam and air conditioning supply	35	2,379.1	103.3	-4.3	-3.4	105.9	4.5	0.1
Manufacturing industries	10-33	27,790.5	114.1	-3.4	0.7	114.7	3.2	2.3
Mining and quarrying	05-09	624.5	54.3	-8.0	-5.7	62.7	2.6	-7.7
Transportable goods industries	05-33	28,415.0	112.9	-3.7	0.7	113.6	3.5	2.3
Industries	05-35	30,794.1	112.2	-3.8	0.4	113.1	3.6	2.1
<i>of which: Energy producing industries</i>		2,526.5	103.3	-2.1	-3.2	104.1	4.7	-1.4
Capital goods		5,550.9	93.4	-3.4	-1.5	94.7	3.0	-1.4
Intermediate products		5,933.9	58.3	0.3	-14.2	59.6	-1.2	-12.5
Consumer goods		16,782.8	139.1	-6.2	4.1	139.8	4.1	6.0
<i>of which: Durable consumer goods</i>		515.0	73.1	0.2	11.1	73.3	0.8	11.4
Non-durable consumer goods		16,267.8	141.3	-6.0	3.9	141.8	4.1	5.9

Table 5 Volume Indices of Production for Selected Sectors - Seasonally Adjusted¹

Base year 2005=100

Period	Industrial Sector and NACE Code						
	Total for Manufacturing Industries	Food products	Beverages	Chemicals and chemical products	Basic pharmaceutical products and preparations	Computer, electronic and optical products	Other manufacturing
	10-33	10	11	20	21	26	32
2009 January	106.1	99.7	110.6	93.9	126.7	104.3	105.1
February	104.0	98.6	100.8	93.1	122.6	102.7	117.0
March	108.4	98.1	107.0	109.6	128.6	104.3	109.1
April	106.9	97.3	113.0	103.3	135.6	98.0	118.1
May	102.9	99.3	114.0	101.1	121.3	97.6	117.1
June	104.7	92.9	114.2	110.8	134.1	86.7	115.0
July	104.4	92.0	108.7	94.0	138.4	79.2	104.3
August	93.5	95.2	111.6	93.6	119.6	71.5	114.8
September	101.2	89.7	98.3	103.5	135.8	59.4	114.4
October	100.2	93.3	104.1	108.6	133.1	59.0	113.1
November	91.6	92.0	102.7	126.6	106.1	74.7	107.5
December	97.4	91.5	104.1	128.6	126.9	62.1	107.5
2010 January	107.4	101.2	109.7	134.7	143.8	58.5	123.3
February	108.3	93.4	114.7	137.7	146.1	61.0	124.5
March	109.6	93.6	122.9	127.1	155.3	58.0	129.8
April	105.5	94.3	110.1	111.7	136.8	60.5	130.1
May	110.9	95.8	120.3	123.0	151.6	62.2	133.8
June	113.6	105.1	117.2	125.1	155.5	63.4	139.1
July	118.5	97.6	118.5	115.7	167.1	63.8	149.0
August	104.1	94.6	124.4	121.9	143.7	64.2	137.6
September	113.3	101.1	104.2	125.0	154.6	60.9	139.4
October	107.9	96.4	121.8	133.6	140.9	61.0	137.4
November	110.3	95.8	105.6	121.3	153.7	61.5	137.6
December	112.4	95.8	122.4	96.3	164.7	58.2	136.6
2011 January	113.0	96.2	150.8	134.9	152.5	63.7	130.8
February	111.3	95.8	123.4	133.7	151.3	59.5	127.1
March	109.4	99.1	118.1	139.5	142.5	60.7	128.5
April	111.5	99.2	123.2	145.7	158.7	55.1	130.7
May	111.6	105.1	131.7	153.5	150.9	55.4	128.6
June	110.2	83.3	129.9	136.8	156.5	58.5	126.3
July	111.7	84.6	132.4	160.2	154.1	56.3	132.3
August	118.1	121.3	135.3	159.5	171.0	56.5	135.1
September	114.1	97.3	135.8	148.2	161.9	61.0	129.0
October	122.4	102.2	130.9	167.0	181.5	55.7	138.6
Oct 11 / Oct 10	13.4%	5.9%	7.5%	25.0%	28.8%	-8.6%	0.9%
Oct 11 / Sep 11	7.3%	5.0%	-3.6%	12.7%	12.0%	-8.6%	7.5%

¹ All data for latest month are provisional

Table 6 Industrial Turnover Indices¹

Base year 2005=100

Period	Manufacturing Industries NACE 10 - 33			Transportable Goods Industries NACE 05 - 33		
	Seasonally adjusted					
	Index	% change on preceding period	Annual % change	Index	% change on preceding period	Annual % change
2005	100.0		4.6	100.0		4.8
2006	101.6		1.6	102.0		2.0
2007	106.9		5.3	107.3		5.3
2008	105.9		-1.0	105.8		-1.4
2009	93.0		-12.2	92.8		-12.3
2010	97.5		4.8	97.2		4.8
2009 Quarter 1	103.1	-4.0	-3.9	102.6	-4.1	-4.5
2	96.6	-6.4	-7.4	96.4	-6.1	-7.7
3	88.8	-8.0	-16.4	88.6	-8.0	-16.4
4	83.8	-5.7	-22.0	83.8	-5.5	-21.7
2010 Quarter 1	93.7	11.9	-9.2	93.5	11.6	-8.9
2	96.9	3.4	0.3	96.7	3.4	0.3
3	100.3	3.5	12.9	99.9	3.3	12.7
4	99.7	-0.6	19.1	99.4	-0.5	18.7
2011 Quarter 1	98.6	-1.1	5.3	98.3	-1.1	5.2
2	98.1	-0.5	1.2	97.7	-0.6	1.1
3	101.5	3.5	1.2	101.1	3.4	1.2
2009 January	105.0	2.4	-0.7	104.4	2.2	-1.5
February	95.8	-8.8	-12.2	95.3	-8.7	-12.8
March	108.2	13.0	1.0	107.7	13.1	0.6
April	102.3	-5.5	-1.8	101.9	-5.5	-2.4
May	90.6	-11.4	-14.8	90.6	-11.0	-14.9
June	96.8	6.8	-5.3	96.6	6.6	-5.4
July	88.9	-8.1	-14.3	88.8	-8.1	-14.2
August	83.4	-6.1	-23.8	83.2	-6.3	-23.8
September	93.6	12.2	-11.7	93.4	12.2	-11.7
October	85.1	-9.0	-22.0	85.1	-8.9	-21.7
November	82.8	-2.7	-25.0	82.9	-2.6	-24.8
December	83.3	0.5	-18.8	83.3	0.5	-18.5
2010 January	94.7	13.7	-9.8	94.4	13.3	-9.6
February	91.7	-3.2	-4.2	91.6	-3.0	-3.9
March	94.5	3.1	-12.6	94.3	2.9	-12.5
April	92.8	-1.8	-9.2	92.7	-1.7	-9.0
May	98.7	6.3	8.9	98.5	6.2	8.6
June	99.1	0.4	2.4	98.8	0.3	2.2
July	101.8	2.8	14.5	101.4	2.7	14.2
August	98.4	-3.4	17.9	98.0	-3.4	17.7
September	100.6	2.2	7.5	100.2	2.2	7.3
October	99.1	-1.4	16.5	98.9	-1.3	16.1
November	99.8	0.6	20.4	99.4	0.6	20.0
December	100.2	0.4	20.3	99.9	0.5	20.0
2011 January	102.1	1.9	7.8	101.8	1.9	7.8
February	99.0	-3.0	7.9	98.5	-3.2	7.6
March	95.1	-3.9	0.6	94.9	-3.6	0.7
April	98.1	3.2	5.7	97.7	2.9	5.4
May	99.7	1.5	1.0	99.3	1.6	0.9
June	96.5	-3.2	-2.6	96.1	-3.2	-2.6
July	99.8	3.5	-2.0	99.5	3.5	-1.9
August	104.2	4.4	5.9	103.6	4.2	5.8
September	100.4	-3.6	-0.2	99.9	-3.6	-0.3
October	99.2	-1.2	0.1	98.8	-1.1	0.0

¹ All data for latest month are provisional

Table 7 Turnover Indices for Industrial Sectors - Provisional Results

Base year 2005=100

October 2011

Industrial Sector	NACE	Weighting base		Index - Seasonally adjusted				
		Year 2005 Turnover EUR million	October 2011			Aug 2011 - Oct 2011		
			Index	% change on preceding month	Annual % change	Index	% change on preceding 3 months	Annual % change
Food products and beverages	10-11	18,507.1	119.5	2.4	7.6	123.9	15.8	11.8
Food products	10	16,057.4	116.7	4.9	6.5	122.0	13.3	10.7
Meat and meat products	101	3,581.3	115.1	5.9	11.8	108.5	3.5	6.6
Dairy products	105	2,663.0	111.5	-0.2	-7.1	115.2	-8.9	1.6
Bakery and farinaceous products	107	600.8	109.0	2.7	-1.0	107.7	-3.9	2.8
Grain mill and starch products; prepared animal feeds	106,109	902.7	127.2	3.3	5.3	123.2	-2.0	3.9
Other foods	102-104,108	8,309.4	124.7	10.4	11.2	130.8	34.0	16.3
Beverages	11	2,449.7	125.0	-2.2	13.3	127.2	7.6	18.0
Textiles and wearing apparel	13-14	483.2	41.1	-3.4	-30.0	43.7	-12.2	-26.3
Textiles	13	244.4	60.0	-5.4	-27.4	63.0	-2.5	-21.1
Wearing apparel	14	238.9	22.6	-6.5	-36.4	25.2	-25.0	-36.7
Leather and related products	15	27.2	114.8	0.1	20.1	116.7	-4.0	22.8
Wood and wood products, except furniture	16	1,073.6	54.4	6.9	-4.0	52.7	-4.5	-7.9
Paper and paper products; printing and reproduction of recorded media	17-18	1,968.5	68.6	1.8	-18.4	69.3	0.7	-15.5
Paper and paper products	17	558.1	71.0	3.3	15.6	69.3	1.3	9.1
Printing and reproduction of recorded media	18	1,410.4	68.7	2.2	-27.0	69.3	0.6	-22.1

Table 7 Turnover Indices for Industrial Sectors - Provisional Results (continued)

Base year 2005=100

October 2011

Industrial Sector	NACE	Weighting base		Index - Seasonally adjusted				
		Year 2005 Turnover EUR million	October 2011			Aug 2011 - Oct 2011		
			Index	% change on preceding month	Annual % change	Index	% change on preceding 3 months	Annual % change
Chemicals and pharmaceuticals	20-21	28,397.2	137.7	-5.1	-2.5	143.5	1.6	-0.1
Chemicals and chemical products	20	2,139.4	168.8	6.6	17.7	166.4	7.2	23.4
Basic pharmaceutical products and preparations	21	26,257.8	135.7	-5.9	-4.0	141.9	1.1	-1.7
Rubber and plastic products	22	1,485.6	71.3	-1.3	-6.9	72.6	-8.3	-11.4
Other non-metallic mineral products	23	2,173.4	44.8	-3.3	-7.6	44.8	5.2	-9.3
Basic metals and fabricated metal products	24-25	2,029.8	79.0	3.0	-2.8	78.0	-3.1	-4.1
Basic metals	24	491.1	130.6	4.0	12.7	126.9	-0.8	2.4
Fabricated metal products, except machinery and equipment	25	1,538.7	59.7	1.0	-11.3	60.0	-9.1	-8.1
Computer, electronic, optical and electrical equipment	26-27	23,574.0	40.0	-9.7	-2.4	41.2	-0.7	-5.7
Computer, electronic and optical products	26	22,576.3	39.9	-11.1	-1.7	41.5	2.7	-5.3
Electronic components and boards	261	4,312.1	64.7	0.3	-4.7	63.7	0.0	-12.4
Computers and peripheral equipment	262	17,068.1	28.5	-9.8	-0.8	29.1	-4.6	-3.6
Other electronic and optical products	263-268	1,196.0	100.2	10.3	6.3	95.0	1.9	3.5
Electrical equipment	27	997.7	54.6	-2.6	-15.0	54.8	-3.7	-10.9

Table 7 Turnover Indices for Industrial Sectors - Provisional Results (continued)

Base year 2005=100

October 2011

Industrial Sector	NACE	Weighting base	Index - Seasonally adjusted					
		Year 2005 Turnover EUR million	October 2011			Aug 2011 - Oct 2011		
			Index	% change on preceding month	Annual % change	Index	% change on preceding 3 months	Annual % change
Machinery and equipment, not elsewhere classified	28	2,296.9	102.6	10.9	-4.8	98.3	3.5	-5.1
Transport equipment	29-30	1,088.3	80.7	0.7	-3.8	80.2	2.0	7.5
Tobacco; coke and refined petroleum products; furniture	12,19,31	2,547.3	115.4	-0.8	16.0	115.9	-1.9	11.0
Other manufacturing	32	4,845.5	150.4	3.1	2.8	146.3	0.0	0.0
Repair and installation of machinery and equipment	33	129.7	165.5	37.4	59.1	139.2	5.3	39.2
Manufacturing industries	10-33	90,627.4	99.2	-1.2	0.1	101.3	2.7	1.9
Mining and quarrying	05-09	1,513.7	75.7	3.8	-7.8	75.5	-1.7	-6.4
Transportable goods industries	05-33	92,141.1	98.8	-1.1	0.0	100.9	2.6	1.9
<i>of which: Industries mainly or wholly producing¹</i>								
Capital goods		26,478.0	60.2	-2.2	1.3	60.5	-1.8	0.0
Intermediate products		15,554.9	70.7	-0.1	-3.4	70.7	-2.2	-6.4
Consumer goods		48,377.9	126.6	-1.8	-0.4	129.6	4.0	3.0
<i>of which: Durable consumer goods</i>		1,494.5	78.4	2.1	4.5	76.8	0.1	-0.8
Non-durable consumer goods		46,883.4	128.2	-1.9	-0.5	131.4	4.2	3.1

¹ Excludes Energy producing industries

Table 7a Turnover Indices for Industrial Sectors - Final Results

Base year 2005=100

September 2011

Industrial Sector	NACE	Weighting base		Index - Seasonally adjusted				
		Year 2005 Turnover EUR million	September 2011			Jul 2011 - Sep 2011		
			Index	% change on preceding month	Annual % change	Index	% change on preceding 3 months	Annual % change
Food products and beverages	10-11	18,507.1	116.7	-13.6	2.9	119.4	8.2	8.1
Food products	10	16,057.4	111.3	-19.2	-0.5	117.6	5.0	6.4
Meat and meat products	101	3,581.3	108.7	6.3	5.6	105.8	1.7	4.3
Dairy products	105	2,663.0	111.8	-8.3	-2.0	119.9	-4.7	10.6
Bakery and farinaceous products	107	600.8	106.1	-1.8	5.4	109.3	-2.3	6.4
Grain mill and starch products; prepared animal feeds	106,109	902.7	123.2	3.0	3.7	122.1	-2.2	4.6
Other foods	102-104,108	8,309.4	113.0	-26.7	-3.2	118.5	9.5	5.3
Beverages	11	2,449.7	127.8	-0.7	21.5	125.7	5.7	19.5
Textiles and wearing apparel	13-14	483.2	42.6	-9.7	-30.3	46.4	-9.6	-22.0
Textiles	13	244.4	63.5	-2.8	-20.4	67.4	2.0	-14.7
Wearing apparel	14	238.9	24.1	-15.7	-46.9	26.9	-23.1	-35.3
Leather and related products	15	27.2	114.7	-4.6	25.4	118.1	-0.3	27.4
Wood and wood products, except furniture	16	1,073.6	50.9	-4.0	-14.2	53.2	-3.3	-6.5
Paper and paper products; printing and reproduction of recorded media	17-18	1,968.5	67.4	-6.2	-13.2	69.8	2.2	-12.0
Paper and paper products	17	558.1	68.8	0.9	7.8	67.8	-2.2	5.6
Printing and reproduction of recorded media	18	1,410.4	67.2	-6.6	-19.5	69.9	2.5	-17.3

Table 7a Turnover Indices for Industrial Sectors - Final Results (continued)

Base year 2005=100

September 2011

Industrial Sector	NACE	Weighting base	Index - Seasonally adjusted					
		Year 2005 Turnover EUR million	September 2011			Jul 2011 - Sep 2011		
			Index	% change on preceding month	Annual % change	Index	% change on preceding 3 months	Annual % change
Chemicals and pharmaceuticals	20-21	28,397.2	145.1	-1.3	-2.0	145.4	4.5	0.6
Chemicals and chemical products	20	2,139.4	158.3	-8.1	16.1	167.2	12.4	30.6
Basic pharmaceutical products and preparations	21	26,257.8	144.2	-0.7	-3.2	143.7	3.8	-1.5
Rubber and plastic products	22	1,485.6	72.2	-2.8	-20.5	75.6	-3.9	-8.4
Other non-metallic mineral products	23	2,173.4	46.3	7.3	1.2	45.9	12.2	-7.5
Basic metals and fabricated metal products	24-25	2,029.8	76.7	-2.2	-5.1	78.5	-2.6	-0.3
Basic metals	24	491.1	125.6	0.6	0.4	129.1	1.6	6.3
Fabricated metal products, except machinery and equipment	25	1,538.7	59.1	-3.6	-8.6	60.8	-10.3	-4.1
Computer, electronic, optical and electrical equipment	26-27	23,574.0	44.2	12.6	1.3	41.3	-0.2	-9.8
Computer, electronic and optical products	26	22,576.3	44.9	13.4	2.1	41.3	3.0	-9.4
Electronic components and boards	261	4,312.1	64.5	3.8	-11.5	63.6	-2.3	-15.4
Computers and peripheral equipment	262	17,068.1	31.6	16.9	6.9	28.6	-3.7	-8.6
Other electronic and optical products	263-268	1,196.0	90.8	-3.9	1.1	92.1	-7.6	-1.7
Electrical equipment	27	997.7	56.0	3.9	-5.0	55.0	-7.4	-11.4

Table 7a Turnover Indices for Industrial Sectors - Final Results (continued)

Base year 2005=100

September 2011

Industrial Sector	NACE	Weighting base	Index - Seasonally adjusted					
		Year 2005 Turnover EUR million	September 2011			Jul 2011 - Sep 2011		
			Index	% change on preceding month	Annual % change	Index	% change on preceding 3 months	Annual % change
Machinery and equipment, not elsewhere classified	28	2,296.9	92.6	-7.6	-11.6	97.3	9.0	1.6
Transport equipment	29-30	1,088.3	80.1	0.5	4.8	79.4	-0.8	12.5
Tobacco; coke and refined petroleum products; furniture	12,19,31	2,547.3	116.4	0.4	12.5	118.8	3.6	14.3
Other manufacturing	32	4,845.5	145.8	1.8	0.6	145.2	1.5	-2.9
Repair and installation of machinery and equipment	33	129.7	120.4	-10.3	36.5	133.2	0.5	28.7
Manufacturing industries	10-33	90,627.4	100.4	-3.6	-0.2	101.5	3.5	1.2
Mining and quarrying	05-09	1,513.7	73.0	-6.3	-7.5	77.5	5.4	-2.8
Transportable goods industries	05-33	92,141.1	99.9	-3.6	-0.3	101.1	3.5	1.2
<i>of which: Industries mainly or wholly producing¹</i>								
Capital goods		26,478.0	61.6	3.2	3.4	60.4	0.8	-2.6
Intermediate products		15,554.9	70.8	0.2	-7.3	72.0	0.3	-5.5
Consumer goods		48,377.9	128.9	-3.2	-1.3	129.3	3.6	2.4
<i>of which: Durable consumer goods</i>		1,494.5	76.8	1.7	2.9	77.0	-0.6	-3.9
Non-durable consumer goods		46,883.4	130.6	-3.2	-1.4	131.0	3.7	2.4

¹ Excludes Energy producing industries

Table 8 Turnover Indices for Selected Sectors - Seasonally Adjusted¹

Base year 2005=100

Period	Industrial Sector and NACE Code						
	Total for Manufacturing Industries	Food products	Beverages	Chemicals and chemical products	Basic pharmaceutical products and preparations	Computer, electronic and optical products	Other manufacturing
	10-33	10	11	20	21	26	32
2009 January	105.0	108.1	104.5	104.6	128.8	88.8	105.9
February	95.8	104.7	93.7	97.9	114.5	85.3	122.3
March	108.2	103.6	105.6	122.6	136.4	81.4	111.3
April	102.3	101.3	105.6	118.8	138.4	82.8	122.4
May	90.6	101.5	99.1	111.7	110.1	71.4	117.7
June	96.8	100.6	103.6	112.2	136.9	58.7	118.7
July	88.9	98.3	105.8	102.5	124.1	46.2	109.6
August	83.4	104.4	94.6	97.3	105.8	47.6	120.1
September	93.6	95.1	99.0	101.7	150.9	43.7	121.5
October	85.1	97.2	98.0	103.0	117.0	38.6	116.8
November	82.8	98.5	100.0	115.7	101.6	43.5	115.9
December	83.3	98.6	98.8	115.6	110.6	43.2	109.5
2010 January	94.7	108.9	112.4	133.9	129.1	37.7	131.5
February	91.7	113.8	103.1	138.8	123.9	38.8	131.9
March	94.5	94.7	107.5	136.2	127.7	40.1	135.8
April	92.8	99.8	100.4	130.3	130.6	41.1	140.3
May	98.7	119.2	104.8	132.1	136.6	44.8	140.9
June	99.1	111.0	105.8	137.5	137.6	46.6	148.9
July	101.8	110.6	102.3	122.5	146.2	46.3	156.0
August	98.4	109.0	108.3	125.2	142.4	46.6	147.7
September	100.6	111.9	105.2	136.3	149.0	44.0	144.9
October	99.1	109.6	110.3	143.5	141.3	40.6	146.3
November	99.8	106.5	96.7	131.0	151.7	40.2	141.9
December	100.2	117.2	106.7	123.7	156.7	41.5	143.1
2011 January	102.1	108.4	116.2	143.9	141.4	44.6	139.9
February	99.0	108.5	116.5	146.9	142.4	41.5	137.8
March	95.1	112.2	113.6	147.2	120.3	40.7	138.8
April	98.1	116.4	122.7	151.7	135.8	38.5	136.5
May	99.7	120.7	117.6	149.3	141.1	39.8	149.1
June	96.5	99.2	116.6	145.1	138.3	42.0	142.9
July	99.8	103.1	120.4	171.2	141.6	39.4	146.8
August	104.2	137.6	128.7	172.3	145.3	39.6	143.2
September	100.4	111.3	127.8	158.3	144.2	44.9	145.8
October	99.2	116.7	125.0	168.8	135.7	39.9	150.4
Oct 11 / Oct 10	0.1%	6.5%	13.3%	17.7%	-4.0%	-1.7%	2.8%
Oct 11 / Sep 11	-1.2%	4.9%	-2.2%	6.6%	-5.9%	-11.1%	3.1%

¹ All data for latest month are provisional

Table 9 Production and Turnover Indices by Main Industrial Groupings - Seasonally Adjusted¹

Base year 2005=100

Period	Production					Turnover				
	Capital goods	Intermediate goods	Consumer goods	Durable consumer goods	Non-durable consumer goods	Capital goods	Intermediate goods	Consumer goods	Durable consumer goods	Non-durable consumer goods
2009 January	103.1	79.4	114.8	72.0	116.2	91.4	80.6	117.7	82.0	118.8
February	103.4	79.1	111.6	73.2	112.8	90.3	77.6	106.2	84.5	106.8
March	104.3	82.0	116.0	65.1	117.6	87.6	84.0	123.0	82.7	124.1
April	100.6	77.6	119.5	63.0	121.4	86.2	75.6	121.0	71.3	122.5
May	97.0	77.9	111.9	63.6	113.3	79.2	77.0	102.1	72.7	103.1
June	92.2	76.0	117.9	60.4	119.8	68.5	76.7	119.1	58.4	120.9
July	81.4	75.6	118.1	62.2	120.0	55.2	74.3	111.0	70.4	112.4
August	86.0	71.0	107.6	64.0	108.3	59.4	72.7	97.4	70.9	98.2
September	86.8	65.3	118.7	62.5	120.8	56.4	70.4	123.9	72.5	125.7
October	79.8	69.1	117.2	62.9	119.0	49.5	72.8	107.2	72.4	108.3
November	80.5	75.5	102.0	62.7	103.2	53.2	77.5	100.6	69.8	101.9
December	80.0	67.3	114.6	60.8	116.3	54.0	73.5	104.7	71.8	105.8
2010 January	84.5	68.0	126.4	60.8	128.5	54.2	76.0	119.2	72.7	120.6
February	86.5	70.5	126.8	62.3	128.9	55.5	78.9	115.8	72.4	117.1
March	86.2	67.9	132.8	62.3	135.0	57.1	77.0	115.4	69.3	116.7
April	89.4	67.8	120.0	62.3	121.8	56.8	79.0	116.4	75.5	117.7
May	94.0	71.2	129.6	63.7	131.7	63.2	78.8	122.8	83.4	124.1
June	93.1	70.6	134.9	65.6	137.2	63.6	76.8	125.2	81.1	126.5
July	98.0	66.7	138.9	65.9	141.3	64.0	75.6	128.4	83.1	129.9
August	95.1	69.8	122.7	65.7	124.0	62.6	76.7	119.8	82.6	121.0
September	94.8	67.9	133.6	65.8	136.0	59.5	76.4	130.5	74.6	132.4
October	96.3	65.8	125.3	64.2	127.4	59.5	73.2	127.1	75.0	128.8
November	95.6	64.3	131.9	63.1	134.0	60.9	68.9	130.3	74.5	132.6
December	92.3	61.0	137.4	62.6	139.8	59.0	72.0	134.4	75.6	136.4
2011 January	94.6	67.9	132.4	66.5	134.6	62.1	81.1	126.3	73.6	127.8
February	94.8	64.3	131.3	67.2	133.4	62.6	74.2	125.5	74.0	127.0
March	92.9	62.4	126.6	69.8	128.4	59.4	78.2	117.2	76.7	118.3
April	87.9	64.8	137.4	75.0	139.4	54.6	73.3	126.5	81.4	127.9
May	93.0	58.1	133.9	69.4	135.9	62.4	70.9	126.2	75.1	127.8
June	94.6	58.2	131.6	73.7	133.5	62.5	71.3	121.9	76.3	123.2
July	93.9	62.6	131.6	73.7	133.5	60.1	74.6	125.6	78.7	127.2
August	96.7	58.1	148.3	73.0	150.3	59.7	70.7	133.2	75.5	135.0
September	93.4	58.3	139.1	73.1	141.3	61.6	70.8	128.9	76.8	130.6
October	96.4	57.6	152.1	74.1	154.7	60.2	70.7	126.6	78.4	128.2
Oct 11 / Oct 10	0.1%	-12.5%	21.4%	15.5%	21.5%	1.3%	-3.4%	-0.4%	4.5%	-0.5%
Oct 11 / Sep 11	3.3%	-1.1%	9.4%	1.3%	9.5%	-2.2%	-0.1%	-1.8%	2.1%	-1.9%

¹ All data for latest month are provisional

Table 10 New Orders Indices for Selected Sectors¹

Base year 2005=100

Period	New Orders Indices - Seasonally adjusted						
	Industrial sector and NACE code						
	Total for Manufacturing Industries 10-33	Food products 10	Beverages 11	Chemicals and chemical products 20	Basic pharmaceutical products and preparations 21	Computer, electronic and optical products 26	Other manufacturing 32
2009 January	104.7	107.7	101.1	105.6	127.9	88.9	105.3
February	95.4	104.6	93.7	97.4	113.1	85.7	121.9
March	107.1	103.6	105.5	122.9	133.8	81.1	109.8
April	101.3	101.2	103.6	115.4	136.2	82.4	121.8
May	89.5	101.2	97.4	111.1	106.4	71.4	116.9
June	96.5	100.5	101.5	111.8	136.7	58.6	118.4
July	88.6	98.0	105.8	101.7	124.3	46.0	109.2
August	84.0	103.5	94.5	97.7	109.6	47.5	120.5
September	93.1	94.0	99.2	101.8	149.3	43.5	119.8
October	83.8	97.0	97.6	103.1	113.5	38.5	114.5
November	82.9	98.1	100.0	114.6	103.9	43.5	114.5
December	82.5	98.3	98.3	114.4	109.3	42.9	110.6
2010 January	94.4	108.6	108.3	122.9	128.8	37.8	130.5
February	90.9	113.6	103.6	126.6	122.1	38.6	130.2
March	93.5	94.5	107.4	127.9	125.3	40.1	136.4
April	92.6	99.0	101.2	126.7	130.3	41.3	139.6
May	97.7	118.9	106.1	124.3	133.3	44.8	139.6
June	97.0	110.4	106.7	127.4	132.1	46.5	146.2
July	101.1	110.0	102.6	122.4	144.4	46.6	155.7
August	99.3	108.4	108.6	123.6	148.0	46.6	146.6
September	100.4	111.3	107.7	128.3	149.0	43.9	146.8
October	100.4	108.9	112.8	133.0	146.8	40.6	145.0
November	99.2	106.0	98.8	123.0	152.7	40.3	142.0
December	99.5	116.4	108.7	123.8	156.9	41.4	143.4
2011 January	102.2	107.7	116.2	144.9	141.0	44.8	141.5
February	99.8	107.0	116.6	151.0	144.8	41.3	138.4
March	92.4	111.1	113.3	147.9	114.0	40.6	135.2
April	98.4	116.0	123.1	155.6	136.2	38.3	135.2
May	99.8	120.2	118.7	151.2	140.7	39.6	149.0
June	97.2	98.5	117.2	143.5	140.8	42.0	144.1
July	99.9	102.6	120.6	173.3	142.1	39.2	146.3
August	101.9	137.6	128.9	166.9	139.4	39.6	142.3
September	99.6	110.2	127.7	155.6	142.4	44.8	144.6
October	98.7	115.4	124.6	168.8	134.4	40.0	152.3
Oct 11 / Oct 10	-1.7%	5.9%	10.5%	27.0%	-8.5%	-1.5%	5.1%
Oct 11 / Sep 11	-0.9%	4.6%	-2.4%	8.5%	-5.6%	-10.7%	5.4%

¹ All data for latest month are provisional

Background Notes

Introduction The monthly industrial production index monitors current trends in the volume of production of industrial local units with three or more persons engaged. The primary purpose of the index is to measure changes in value added at constant prices.

The monthly index of turnover measures the change in the level of sales each month of industrial products, whether manufactured in the month in question or in previous periods (excluding non-industrial activity where practicable). The turnover indices outlined in this release are exclusive of VAT.

The principal difference between the production and turnover indices is that the production index traces the quantitative volume of production (i.e. effect of price changes excluded) each month whether sold or not, whereas the turnover index reflects both the volume of sales and the price level. Starting with January 2009 updated industrial production and turnover indices are being published to base year 2005=100.

The new orders indices measure trends in new orders accepted, including those received and filled during the last month. Orders are valued at the amounts invoiced or still to be invoiced (excluding VAT).

The response rates for the provisional results are typically 46% in terms of the local units surveyed covering 84% of the value of production and 82% of the value of turnover. The corresponding figures for the final results are 58%, 91% and 90% respectively. These response rates are based on averages for a 12 month period ending September 2009. In September 2009 an additional question on response burden showed that respondents took an average of 19 minutes to complete the monthly inquiry form.

Sample covered The monthly survey which provides data for calculating the indices covers the larger local units which between them account for the bulk of industrial output – in general those which in the base year 2005 had twenty or more persons engaged in NACE 5 to 35. For certain sectors the threshold of 20 persons engaged is lowered where this is considered necessary to ensure representativeness of the sample or where data for a sector would have to be kept confidential if the 20 persons engaged threshold were applied. The business activity classifications are based on the Statistical Classification of Economic Activities in the European Community (NACE Rev. 2).

Methodology Working day adjusted individual production, turnover and new orders sub-indices are compiled for each detailed NACE class. These sub-indices are combined to provide the indices for broader sectoral groupings, using as weights for a sector the gross value added at factor cost for production indices, and turnover in goods produced and industrial services provided to others for turnover and new orders indices, for all units in that sector covered in the 2005 Census of Industrial Production (CIP). Weights and base year are revised every five years.

The production index is compiled using two methods. One method is based on the valuation of quantity data at base year prices. The series has been compiled using updated prices from the Prodcom 2005 survey. Alternatively, in cases where reliable quantity data cannot be obtained current value data is converted to values at base year prices using suitable Wholesale Price Index (WPI) deflators.

New orders indices have been produced from January 2004 onwards using reported monthly orders data. In the event of non-response, the reported turnover is used as an estimate for the calculation of new orders indices.

Seasonal Adjustment Seasonal adjustment is conducted using the direct seasonal adjustment approach. Under this approach each individual series is independently adjusted, e.g. aggregate series are adjusted without reference to the component series. Seasonal adjustment models are developed for each series based on unadjusted data spanning from January 1998 to the current period. These models are then applied to the entire series. Seasonal factors are updated each month.

The adjustments are completed by applying the X-12-ARIMA model, developed by the U.S. Census Bureau to the unadjusted data. This methodology estimates seasonal factors while also taking into consideration factors that impact on the quality of the seasonal adjustment such as:

- Calendar effects, e.g. the timing of Easter
- Outliers, temporary changes and level shifts in the series

For additional information on the use of X-12-ARIMA see (Findley, D.F., B.C. Monsell, W.R. Bell, M.C. Otto, and B. Chen (1998), "New Capabilities and Methods of the X-12-Arima Seasonal Adjustment Program", *Journal of Business & Economic Statistics*, 16, pp. 127-177.)

**NACE
classification**

The business activity classifications used in this Statistical release are based on the Statistical Classification of Economic Activities in the European Community i.e. NACE Rev. 2. The main change for the Industrial Production and Turnover release is the reclassification of local units in the Publishing sector (NACE Rev 1.1 22) to the Services sector (i.e. outside the scope of this release).

Other changes mean that there are separate NACE groups for Food products (NACE 10), Beverages (NACE 11), Chemical and chemical products (NACE 20) and Basic pharmaceutical products and preparations (NACE 21).

The descriptions of particular NACE Rev. 2 sectors are sometimes shown in abbreviated form in the release. For further information on the NACE Rev. 2 classification of industrial activity, visit the CSO website (http://www.cso.ie/surveysandmethodologies/classification_indus_act.htm).

Retrospection

Indices calculated under the previous system (NACE Rev1.1 and base year 2000) have been re-cast in order to make comparisons with earlier periods. When making comparisons with data produced in previous monthly industrial production and turnover releases (classified by NACE Rev. 1.1 and NACE Rev. 70) it should be noted that the content of NACE Rev.2 sectors can be quite different from that of similarly-titled NACE Rev. 1.1 and NACE Rev. 70 sectors.

**Updated
Wholesale Price
Index (Base
Year = 2005)**

The wholesale price indices were revised in June 2010 to include updated weights (base year = 2005) and to allow for the NACE Rev. 2 reclassification of the indices. New base year weights were compiled for the Wholesale Price Index using the results of the 2005 Census of Industrial Production (CIP) and the Prodcum Inquiry surveys. New baseweights were applied to each three digit NACE group on the basis of the Census of Industrial Production and the commodity groups weights were assigned on the basis of the Prodcum Inquiry. The business activity classifications used in the updated WPI series are based on the Statistical Classification of Economic Activities in the European Community i.e. NACE Rev. 2. The main change arising from the adoption of NACE Rev. 2 is the reclassification of local units in the Publishing sector (NACE Rev 1.1 22) to the Services sector. Other significant changes include separate NACE divisions for Food products (NACE 10), Beverages (NACE 11), Chemicals and chemical products (NACE 20) and Basic pharmaceutical products and preparations (NACE 21).

For further information on the updated WPI indices see the CSO publication *Wholesale Price Index, Introduction of Updated Series Base Year 2005 = 100*

(<http://www.cso.ie/releasespublications/documents/prices/2010/wpiintro05.pdf>).

Prior to the adoption of the updated WPI indices industrial production mapped the WPI indices from NACE Rev. 1 to NACE Rev.2 to create deflators for the industrial production indices.