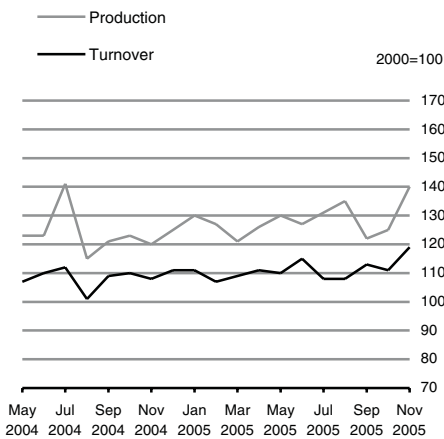




Industrial Production & Turnover November 2005 (*Provisional*) and October 2005 (*Final*)

Manufacturing Industries

Seasonally adjusted



Manufacturing Industries (Base: year 2000=100)

	Production	Turnover
	Seasonally adjusted	
November 2004	120.4	107.5
November 2005	139.8	119.5
% change	+16.1%	+11.1%
Jun-Aug 2005	131.1	110.3
Sep-Nov 2005	129.1	114.3
% change	-1.5%	+3.6%

Production decreased by 1.5% in latest 3 month period

The seasonally adjusted volume of industrial production for manufacturing industries for the three month period September to November 2005 was down 1.5% on the preceding three month period (*see above and Table 4*).

On an annual basis production for All Industries in November 2005 was 14.7% higher than in November 2004 (*see Table 1*). The “Modern Sector”, comprising a number of high-technology and chemical sectors, showed an annual increase in production for November 2005 of 19.1%, while an increase of 5.6% was recorded in the “Traditional” sector (*see Table 2*).

The seasonally adjusted industrial turnover for manufacturing industries was 3.6% higher in the three month period September to November 2005 when compared with the preceding three month period (*see above and Table 7*). On an annual basis turnover in November 2005 was 11.1% higher than in November 2004.

For more information contact Patsy King on 021-4535502 or Iris McCarthy on 021-4535527.

Published by the Central Statistics Office, Ireland.

Ardee Road
Dublin 6
Ireland

Skehard Road
Cork
Ireland

LoCall: 1890 313 414 (ROI)
0870 8760256 (UK/NI)

Tel: +353-1 498 4000
Fax: +353-1 498 4229

Tel: +353-21 453 5000
Fax: +353-21 453 5555

Both offices may be contacted through any of these telephone numbers.

CSO on the Web: www.cso.ie
and go to

Business Sectors: Industry

Director General: Donal Garvey

Enquiries:

Monthly Statistics Results, Analysis and
Publications Section, ext 5541
industry_RAP@cso.ie

Queries and Sales Information Section, ext 5032
information@cso.ie

© Central Statistics Office

The contents of this release may be quoted provided the source is given clearly and accurately. Reproduction for own or internal use is permitted.

Table 1 Volume Indices of Production¹

Base year 2000=100

Period	Manufacturing Industries				All Industries			
	Unadjusted		Seasonally adjusted		Unadjusted		Seasonally adjusted	
	Index	Annual % change	Index	% change on preceding period	Index	Annual % change	Index	% change on preceding period
2000	100.0	15.7			100.0	15.3		
2001	110.0	10.0			109.7	9.7		
2002	118.4	7.6			117.7	7.3		
2003	123.9	4.6			123.3	4.8		
2004	124.4	0.4			123.9	0.5		
2000 Quarter 1	87.2	5.3	87.4	-5.4	87.8	5.5	88.0	-4.9
2	101.8	21.5	98.4	12.6	101.6	20.8	98.4	11.8
3	95.9	14.3	102.0	3.7	96.2	14.4	102.2	3.9
4	115.5	21.1	111.8	9.6	114.8	20.3	111.1	8.7
2001 Quarter 1	113.9	30.6	115.3	3.1	113.5	29.3	114.7	3.2
2	113.0	11.0	108.1	-6.2	112.7	10.9	108.1	-5.8
3	101.1	5.4	108.4	0.3	101.1	5.1	108.2	0.1
4	112.3	-2.8	108.9	0.5	111.9	-2.5	108.5	0.3
2002 Quarter 1	117.8	3.4	119.5	9.7	117.7	3.7	119.0	9.7
2	127.2	12.6	121.2	1.4	125.7	11.5	120.1	0.9
3	111.4	10.2	119.6	-1.3	110.7	9.5	118.8	-1.1
4	117.5	4.6	114.0	-4.7	117.1	4.6	113.5	-4.5
2003 Quarter 1	117.7	-0.1	119.7	5.0	117.8	0.1	119.4	5.2
2	127.8	0.5	121.3	1.3	126.7	0.8	120.6	1.0
3	115.5	3.7	124.6	2.7	115.0	3.9	124.0	2.8
4	134.8	14.7	131.0	5.1	133.8	14.3	129.9	4.8
2004 Quarter 1	123.4	4.8	124.7	-4.8	123.4	4.8	124.5	-4.2
2	132.1	3.4	125.1	0.3	130.9	3.3	124.3	-0.2
3	116.2	0.6	125.5	0.3	115.6	0.5	124.7	0.3
4	126.0	-6.5	122.7	-2.2	126.0	-5.8	122.6	-1.7
2005 Quarter 1	124.0	0.5	125.9	2.6	124.5	0.9	126.1	2.9
2	134.6	1.9	127.6	1.4	133.2	1.8	126.7	0.5
3	119.9	3.2	129.3	1.3	118.7	2.7	127.9	0.9
2004 January	112.3	5.3	124.5	-1.0	113.1	5.3	124.0	-0.8
February	122.4	2.1	125.1	0.5	122.3	1.9	124.1	0.1
March	134.8	5.7	124.6	-0.4	134.2	5.7	125.2	0.9
April	136.3	7.1	129.4	3.9	134.5	6.2	127.8	2.1
May	125.7	1.0	123.4	-4.6	124.4	1.0	122.6	-4.1
June	133.9	1.5	122.6	-0.6	133.3	2.2	122.6	0.0
July	120.7	12.2	140.9	14.9	119.4	11.3	138.6	13.1
August	104.1	-14.2	114.5	-18.7	104.3	-13.7	115.1	-17.0
September	123.2	3.8	120.5	5.2	122.6	4.0	120.1	4.3
October	128.1	-8.1	123.0	2.1	127.3	-7.4	122.8	2.2
November	124.9	-9.9	120.4	-2.1	124.8	-9.2	120.3	-2.0
December	125.2	-0.9	124.7	3.6	126.0	-0.4	124.7	3.7
2005 January	117.3	4.4	129.9	4.1	118.6	4.8	129.9	4.1
February	124.1	1.4	126.9	-2.3	124.4	1.8	126.3	-2.7
March	130.9	-2.9	120.6	-4.9	130.8	-2.5	121.8	-3.5
April	133.0	-2.4	126.3	4.7	131.6	-2.1	125.2	2.8
May	132.1	5.1	129.6	2.6	130.2	4.7	128.3	2.5
June	138.7	3.6	126.9	-2.0	137.7	3.3	126.5	-1.4
July	112.4	-6.9	131.5	3.6	111.3	-6.8	129.5	2.4
August	122.5	17.7	134.7	2.5	120.7	15.7	133.1	2.7
September	124.5	1.1	121.7	-9.7	123.9	1.1	121.3	-8.9
October	130.6	1.9	125.5	3.1	129.5	1.8	124.9	3.0
November	144.8	16.0	139.8	11.4	143.2	14.7	138.1	10.6

¹ All data for latest month are provisional

Table 2 Volume Indices of Production¹ for "Modern"² and All Other Sectors Base year 2000=100

Period	"Modern" Sector				All Other Sectors			
	Unadjusted		Seasonally adjusted		Unadjusted		Seasonally adjusted	
	Index	Annual % change	Index	% change on preceding period	Index	Annual % change	Index	% change on preceding period
2000	100.0	20.2			100.0	5.5		
2001	114.7	14.7			101.8	1.8		
2002	128.6	12.1			100.3	-1.5		
2003	136.3	6.0			102.3	2.0		
2004	135.7	-0.4			105.0	2.6		
2000 Quarter 1	84.9	7.3	83.6	-7.6	94.8	2.5	95.9	-3.4
2	100.0	26.9	97.2	16.3	105.2	8.6	101.4	5.7
3	95.9	17.4	103.4	6.4	96.7	7.9	100.2	-1.2
4	119.5	28.1	115.6	11.8	103.5	3.1	102.4	2.2
2001 Quarter 1	122.5	44.3	122.3	5.8	99.1	4.5	100.3	-2.1
2	118.0	18.0	113.0	-7.6	104.2	-1.0	100.5	0.2
3	100.8	5.1	109.6	-3.0	101.4	4.9	105.1	4.6
4	117.7	-1.5	113.8	3.8	102.6	-0.9	101.7	-3.2
2002 Quarter 1	128.6	5.0	128.7	13.1	100.2	1.1	101.3	-0.4
2	138.6	17.5	132.1	2.6	104.9	0.7	101.3	0.0
3	119.7	18.8	130.9	-0.9	96.3	-5.0	99.6	-1.7
4	127.8	8.6	123.2	-5.9	100.0	-2.5	99.3	-0.3
2003 Quarter 1	129.7	0.9	130.9	6.3	98.6	-1.6	99.5	0.2
2	140.1	1.1	132.8	1.5	105.2	0.3	101.5	2.0
3	124.4	3.9	137.1	3.2	100.1	3.9	103.5	2.0
4	151.5	18.5	146.3	6.7	105.5	5.5	105.0	1.4
2004 Quarter 1	134.7	3.9	134.9	-7.8	105.3	6.8	106.0	1.0
2	143.2	2.2	135.4	0.4	111.2	5.7	107.3	1.2
3	125.2	0.6	138.3	2.1	100.3	0.2	103.9	-3.2
4	140.3	-7.4	135.6	-2.0	103.1	-2.3	102.7	-1.2
2005 Quarter 1	139.4	3.5	140.6	3.7	100.6	-4.5	101.3	-1.4
2	147.3	2.9	139.6	-0.7	110.6	-0.5	106.7	5.3
3	129.2	3.2	142.1	1.8	102.0	1.7	105.7	-0.9
2004 January	120.4	2.2	134.2	-3.8	101.4	11.6	106.0	2.3
February	133.3	0.5	134.7	0.4	104.6	5.0	106.2	0.2
March	149.6	6.9	135.7	0.7	109.6	3.3	105.7	-0.5
April	151.4	8.6	141.7	4.4	107.5	1.3	104.6	-1.0
May	133.3	-1.5	132.9	-6.2	110.2	6.3	106.9	2.2
June	144.3	-1.1	131.6	-1.0	115.7	9.6	110.2	3.1
July	129.3	14.4	161.4	22.6	103.5	5.5	105.5	-4.3
August	108.6	-18.4	120.8	-25.2	97.5	-3.6	104.2	-1.2
September	136.8	6.7	132.0	9.3	99.9	-1.4	101.9	-2.2
October	142.2	-10.1	135.4	2.6	103.5	-0.9	103.4	1.5
November	137.6	-10.5	133.0	-1.8	104.5	-6.1	100.5	-2.8
December	141.3	-0.7	138.6	4.2	101.4	0.4	104.2	3.7
2005 January	132.5	10.1	147.7	6.6	96.2	-5.2	100.4	-3.7
February	139.4	4.6	141.0	-4.6	100.3	-4.1	101.9	1.5
March	146.6	-1.9	132.7	-5.9	105.5	-3.7	101.7	-0.2
April	147.2	-2.7	138.0	4.0	106.7	-0.8	103.8	2.0
May	144.1	8.1	143.6	4.1	108.1	-1.9	104.8	1.0
June	150.6	4.4	137.2	-4.5	117.1	1.2	111.5	6.4
July	116.7	-9.8	146.2	6.6	102.6	-0.9	104.7	-6.2
August	134.2	23.5	149.1	1.9	99.1	1.7	105.9	1.2
September	136.2	-0.4	131.3	-12.0	104.2	4.4	106.5	0.6
October	145.6	2.4	138.6	5.6	103.8	0.3	103.8	-2.5
November	163.8	19.1	158.6	14.4	110.3	5.6	106.2	2.3

¹ All data for latest month are provisional² Details for the "Modern" Sector are given in Table 3 following. It includes the industrial sectors :

NACE 223 Reproduction of recorded media

24 Chemicals (incl. man-made fibres)

30,33 Computers and instrument engineering

31,32 Electrical machinery and equipment

Table 3 Background Information on the "Modern" Sector¹

Industrial Sector	NACE	Weighting base	Employment				
		2000 Gross value added Eur Million	2000 Annual average	Quarterly			
				2004 Q4	2005 Q1	2005 Q2	2005 Q3 ²
				('000)			
Modern Sector		16,719.5	96.9	80.7	80.7	80.4	80.4
Reproduction of recorded media	223	1,427.3	6.2	5.3	5.1	5.3	5.2
Chemicals (incl. man-made fibres)	24	8,251.9	23.4	23.2	23.0	23.2	23.1
Computers and instrument engineering	30, 33	3,278.8	38.9	36.9	37.3	36.1	36.1
Electrical machinery and equipment	31, 32	3,761.5	28.4	15.3	15.3	15.8	16.0
All Other Sectors		10,441.9	166.5	155.3	152.7	152.6	154.3
All Industries		27,161.4	263.5	236.1	233.4	233.0	234.7

¹ The NACE groupings included as part of the "Modern" Sector are those which have been separately identified in Table 4 of the annual "National Income and Expenditure" report.

² Preliminary estimates

Table 4 Volume Indices of Production for Industrial Sectors

Base year 2000=100

October 2005

Industrial Sector	NACE	Weighting base 2000 Gross value added EUR million	Index - Unadjusted				Index - Seasonally adjusted			
			October 2005		Aug 2005 - Oct 2005		October 2005		Aug 2005 - Oct 2005	
			Index	Annual % change	Index	Annual % change	Index	% change on preceding month	Index	% change on preceding 3 months
Food products and beverages; tobacco products	15-16	3,886.8	111.5	-5.3	118.0	3.8	111.0	-9.8	119.4	-7.2
Food products and beverages	15	3,691.8	114.8	-4.7	121.6	4.7	114.8	-10.3	123.5	-6.6
Food products	151-158	2,874.6	111.6	-8.9	122.5	2.7	115.9	-12.8	127.3	-6.7
Meat and meat products	151	435.7	93.0	3.7	89.4	0.9	89.6	0.5	88.5	3.9
Dairy products	155	399.6	86.6	-1.8	94.5	-2.2	87.4	1.9	85.2	-11.7
Bread; fresh pastry goods and cakes; rusks and biscuits; preserved pastry goods and cakes	1581,1582	190.2	103.3	-15.0	100.5	-8.6	100.5	-3.0	102.9	1.1
Sugar; cocoa; chocolate and sugar confectionery	1583,1584	78.8	197.2	-12.9	111.6	-1.8	113.0	-21.1	127.9	-6.2
Grain mill products, starches and starch products; prepared animal feeds	156,157	109.1	90.6	12.0	86.4	9.1	92.6	-6.9	96.9	-2.1
Other foods	152-154,1585-1589	1,661.1	120.7	-12.1	143.3	4.8	134.0	-16.6	151.6	-7.3
Beverages	159	817.3	126.2	11.4	118.5	12.9	112.9	1.7	111.2	-2.4
Tobacco products	16	194.9	48.2	-26.5	48.7	-28.1	44.4	9.5	45.3	-17.8
Textiles and textile products	17-18	307.0	54.2	-3.6	54.9	-0.9	53.3	-5.4	58.7	-2.8
Textiles	17	177.5	55.4	-2.9	52.7	-5.2	56.7	6.4	56.2	0.9
Wearing apparel; dressing and dyeing of fur	18	129.5	52.4	-4.7	58.0	5.5	49.0	-11.5	59.8	-11.1
Leather and leather products	19	17.7	24.3	-22.0	23.7	-33.1	20.1	-8.0	20.7	6.7
Wood and wood products	20	191.4	132.9	4.5	137.2	10.9	126.1	-10.9	138.2	1.8

01

Table 4 Volume Indices of Production for Industrial Sectors

Base year 2000=100

October 2005

Industrial Sector	NACE	Weighting base 2000 Gross value added EUR million	Index - Unadjusted				Index - Seasonally adjusted			
			October 2005		Aug 2005 - Oct 2005		October 2005		Aug 2005 - Oct 2005	
			Index	Annual % change	Index	Annual % change	Index	% change on preceding month	Index	% change on preceding 3 months
Pulp, paper and paper products; publishing, printing and reproduction of recorded media	21-22	2,304.9	150.2	0.6	143.8	4.1	151.1	-1.5	149.8	-5.7
Pulp, paper and paper products	21	246.9	89.8	9.0	87.2	-0.5	90.5	2.8	87.0	-3.2
Publishing, printing and reproduction of recorded media	22	2,058.0	157.5	0.1	150.6	4.4	158.3	-1.6	157.3	-6.1
Publishing; printing and service activities related to printing	221,222	630.7	98.6	14.7	89.4	7.8	93.2	11.0	88.7	-4.4
Reproduction of recorded media	223	1,427.3	183.5	-2.9	177.6	3.6	185.9	-4.1	186.8	-8.7
Chemicals, chemical products and man-made fibres	24	8,251.9	155.1	2.2	143.3	6.5	138.7	7.0	140.7	-3.7
Basic chemicals	241	6,596.7	150.3	5.3	136.8	10.2	133.0	14.1	131.0	-4.8
Pharmaceuticals, medicinal chemicals and botanical products	244	1,155.3	213.0	-3.0	203.6	0.0	204.4	-3.5	221.2	15.1
Other chemicals and chemical products	242,243,245-247	499.9	84.5	-26.7	90.0	-19.5	88.2	-19.2	97.6	-0.7
Rubber and plastic products	25	437.5	92.0	-1.3	87.5	-2.6	89.5	6.3	89.2	1.2
Other non-metallic mineral products	26	578.2	95.7	-4.8	95.0	-3.9	92.9	-6.1	94.4	1.4
Basic metals and fabricated metal products	27-28	715.6	101.9	12.3	98.2	12.0	102.9	1.8	103.1	9.8
Basic metals	27	163.0	99.6	28.0	93.8	31.0	98.5	-3.3	97.8	1.2
Fabricated metal products, except machinery and equipment	28	552.5	102.6	8.5	99.5	7.6	104.2	4.0	103.7	10.7
Machinery and equipment, not elsewhere classified	29	649.2	85.9	2.1	83.3	0.6	88.6	1.9	89.5	14.9

Table 4 Volume Indices of Production for Industrial Sectors

Base year 2000=100

October 2005

Industrial Sector	NACE	Weighting base 2000 Gross value added EUR million	Index - Unadjusted				Index - Seasonally adjusted			
			October 2005		Aug 2005 - Oct 2005		October 2005		Aug 2005 - Oct 2005	
			Index	Annual % change	Index	Annual % change	Index	% change on preceding month	Index	% change on preceding 3 months
Electrical and optical equipment	30-33	7,040.4	126.9	4.5	124.8	9.2	125.0	-0.2	128.7	4.3
Office machinery and computers	30	1,605.9	111.0	14.5	106.2	15.1	117.1	-8.6	115.0	12.1
Electrical machinery and apparatus, not elsewhere classified	31	1,049.7	166.6	-4.3	155.4	8.6	161.4	-1.5	161.0	7.2
Radio, television and communication equipment and apparatus	32	2,711.8	77.9	-3.2	78.0	-5.1	86.6	15.8	81.0	4.0
Medical, precision and optical instruments, watches and clocks	33	1,672.9	196.7	10.3	199.4	17.7	195.7	7.9	208.1	3.9
Transport equipment	34-35	433.6	118.0	17.5	94.8	-0.6	117.1	34.4	98.7	4.8
Manufacturing not elsewhere classified; recycling; refined petroleum products	36,37,23	680.5	86.9	12.6	75.6	8.6	83.5	6.1	80.0	7.8
Manufacturing industries		25,494.6	130.6	1.9	125.7	6.2	125.5	3.1	127.4	-1.5
Mining and quarrying	10-14	289.0	99.5	3.1	89.8	-23.7	108.2	21.8	85.2	-22.1
Transportable goods industries		25,783.6	130.3	2.0	125.3	5.8	125.1	3.2	126.9	-1.6
Electricity, gas and water supply	40-41	1,377.8	116.2	-2.1	110.7	-0.4	121.7	-6.0	119.6	5.7
All industries		27,161.4	129.5	1.8	124.6	5.6	124.9	3.0	126.5	-1.2
<i>of which:</i> Energy producing industries	10,11,12,23,40,41	1,527.5	111.5	-0.7	104.8	-5.2	119.6	0.8	112.1	-0.2
Capital goods		5,224.8	142.7	8.4	138.0	13.7	142.0	0.5	145.9	8.0
Intermediate products		11,906.0	124.6	2.6	116.7	5.4	115.0	8.5	117.8	1.2
Consumer goods		8,503.1	131.7	-3.0	130.9	2.7	126.1	-8.9	135.0	-1.6
<i>of which:</i> Durable consumer goods		924.3	92.7	8.8	83.2	7.8	89.6	7.0	88.7	8.3
Non-durable consumer goods		7,578.8	136.4	-3.8	136.7	2.2	130.7	-10.1	140.6	-2.3

Table 4 Volume Indices of Production for Industrial Sectors

Base year 2000=100

November 2005

Industrial Sector	NACE	Weighting base 2000 Gross value added EUR million	Index - Unadjusted				Index - Seasonally adjusted			
			November 2005		Sep 2005 - Nov 2005		November 2005		Sep 2005 - Nov 2005	
			Index	Annual % change	Index	Annual % change	Index	% change on preceding month	Index	% change on preceding 3 months
Food products and beverages; tobacco products	15-16	3,886.8	129.6	9.8	119.8	4.1	125.7	13.2	120.2	-5.8
Food products and beverages	15	3,691.8	134.0	10.8	123.7	5.2	130.0	13.2	124.6	-5.0
Food products	151-158	2,874.6	132.6	6.9	122.6	1.7	133.4	15.2	127.7	-6.0
Meat and meat products	151	435.7	88.1	-0.9	90.1	1.8	84.7	-5.4	87.7	2.8
Dairy products	155	399.6	71.5	-5.1	84.4	-1.4	98.2	12.3	90.6	-1.0
Bread; fresh pastry goods and cakes; rusks and biscuits; preserved pastry goods and cakes	1581,1582	190.2	98.7	-4.6	100.6	-9.0	102.2	1.6	102.1	-2.3
Sugar; cocoa; chocolate and sugar confectionery	1583,1584	78.8	268.4	5.1	181.9	1.0	101.7	-10.0	119.5	-9.2
Grain mill products, starches and starch products; prepared animal feeds	156,157	109.1	92.7	9.5	90.0	11.1	88.4	-4.5	93.5	-6.9
Other foods	152-154,1585-1589	1,661.1	159.1	10.6	142.2	2.8	168.0	25.4	154.8	-5.1
Beverages	159	817.3	138.9	26.5	127.4	18.8	117.9	4.5	114.0	2.2
Tobacco products	16	194.9	45.2	-28.0	46.2	-30.8	43.3	-2.5	42.7	-21.4
Textiles and textile products	17-18	307.0	51.7	-4.9	54.1	-4.1	49.4	-7.5	53.0	-14.2
Textiles	17	177.5	54.0	-7.3	55.0	-4.3	52.6	-7.3	54.1	-3.4
Wearing apparel; dressing and dyeing of fur	18	129.5	48.7	-0.9	52.7	-3.8	45.4	-7.3	50.0	-29.0
Leather and leather products	19	17.7	19.5	-23.4	23.1	-23.8	17.2	-14.6	19.7	-1.0
Wood and wood products	20	191.4	138.7	5.1	139.5	6.0	132.4	5.0	133.6	-4.6

∞

Table 4 Volume Indices of Production for Industrial Sectors

Base year 2000=100

November 2005

Industrial Sector	NACE	Weighting base 2000 Gross value added EUR million	Index - Unadjusted				Index - Seasonally adjusted			
			November 2005		Sep 2005 - Nov 2005		November 2005		Sep 2005 - Nov 2005	
			Index	Annual % change	Index	Annual % change	Index	% change on preceding month	Index	% change on preceding 3 months
Pulp, paper and paper products; publishing, printing and reproduction of recorded media	21-22	2,304.9	155.3	3.8	154.6	3.3	154.5	2.2	153.1	-0.3
Pulp, paper and paper products	21	246.9	88.6	7.6	89.1	3.2	87.5	-3.3	88.6	0.6
Publishing, printing and reproduction of recorded media	22	2,058.0	163.3	3.5	162.4	3.2	162.3	2.5	160.6	-0.7
Publishing; printing and service activities related to printing	221,222	630.7	94.6	24.4	94.4	13.2	93.5	0.3	90.1	-0.4
Reproduction of recorded media	223	1,427.3	193.6	-0.1	192.5	1.4	192.3	3.4	190.8	-2.8
Chemicals, chemical products and man-made fibres	24	8,251.9	191.8	39.5	159.9	11.1	183.2	32.1	150.9	3.4
Basic chemicals	241	6,596.7	201.1	59.9	158.4	18.5	189.1	42.2	146.7	9.2
Pharmaceuticals, medicinal chemicals and botanical products	244	1,155.3	183.4	-16.2	198.2	-8.7	187.2	-8.4	201.1	-9.7
Other chemicals and chemical products	242,243,245-247	499.9	89.7	-15.6	91.9	-15.9	94.4	7.0	97.5	4.7
Rubber and plastic products	25	437.5	90.6	-5.7	90.2	-3.4	88.1	-1.6	87.2	-1.8
Other non-metallic mineral products	26	578.2	89.8	-11.8	96.0	-3.7	84.3	-9.3	92.0	-0.2
Basic metals and fabricated metal products	27-28	715.6	92.3	0.7	97.9	8.1	89.8	-12.8	97.8	-1.2
Basic metals	27	163.0	88.6	-0.8	93.9	23.1	88.1	-10.6	96.1	-2.4
Fabricated metal products, except machinery and equipment	28	552.5	93.4	1.1	99.1	4.4	91.5	-12.2	98.5	0.0
Machinery and equipment, not elsewhere classified	29	649.2	93.0	16.0	89.1	7.9	89.1	0.6	88.2	3.9

Table 4 Volume Indices of Production for Industrial Sectors

Base year 2000=100

November 2005

Industrial Sector	NACE	Weighting base 2000 Gross value added EUR million	Index - Unadjusted				Index - Seasonally adjusted			
			November 2005		Sep 2005 - Nov 2005		November 2005		Sep 2005 - Nov 2005	
			Index	Annual % change	Index	Annual % change	Index	% change on preceding month	Index	% change on preceding 3 months
Electrical and optical equipment	30-33	7,040.4	124.9	-1.0	126.6	3.5	121.6	-2.7	123.9	-2.7
Office machinery and computers	30	1,605.9	103.5	1.8	114.8	14.3	109.5	-6.5	118.2	11.3
Electrical machinery and apparatus, not elsewhere classified	31	1,049.7	158.6	33.5	162.9	13.8	166.0	2.9	163.9	2.1
Radio, television and communication equipment and apparatus	32	2,711.8	79.7	-29.8	77.7	-15.2	69.9	-19.3	76.8	1.6
Medical, precision and optical instruments, watches and clocks	33	1,672.9	197.6	13.2	194.3	7.9	191.8	-2.0	189.4	-12.1
Transport equipment	34-35	433.6	116.5	12.2	106.3	6.0	113.4	-3.2	105.5	11.8
Manufacturing not elsewhere classified; recycling; refined petroleum products	36,37,23	680.5	84.4	13.4	82.2	11.8	80.0	-4.2	80.7	5.9
Manufacturing industries		25,494.6	144.8	16.0	133.4	6.5	139.8	11.4	129.1	-1.5
Mining and quarrying	10-14	289.0	134.9	32.8	107.9	14.5	150.9	39.4	116.3	24.0
Transportable goods industries		25,783.6	144.7	16.1	133.1	6.6	139.7	11.6	128.8	-1.4
Electricity, gas and water supply	40-41	1,377.8	115.5	-10.7	117.4	-4.3	108.2	-11.1	119.8	5.9
All industries		27,161.4	143.2	14.7	132.3	6.0	138.1	10.6	128.2	-1.2
<i>of which:</i> Energy producing industries	10,11,12,23,40,41	1,527.5	118.5	-3.9	114.6	-1.3	114.4	-4.4	117.5	7.8
Capital goods		5,224.8	140.5	16.1	142.1	11.5	143.0	0.7	142.1	-1.3
Intermediate products		11,906.0	152.2	27.6	128.7	8.5	144.8	25.9	122.2	3.5
Consumer goods		8,503.1	136.9	1.2	134.5	0.7	128.5	1.9	131.2	-6.6
<i>of which:</i> Durable consumer goods		924.3	87.1	1.2	88.0	5.4	80.5	-10.2	84.5	0.1
Non-durable consumer goods		7,578.8	142.9	1.2	140.2	0.4	135.5	3.7	137.3	-6.7

Table 5 Volume Indices of Production for selected sectors¹

Base year 2000=100

Period	Indices - Unadjusted						
	Production						
	Food products and beverages 15	Publishing, printing and reproduction of recorded media 22	Basic chemicals 241	Pharmaceuticals, medicinal chemicals and botanical products 244	Other chemicals and chemical products 24 (other)	Office machinery and computers 30	Medical, precision and optical instruments, etc 33
2004 January	114.1	128.0	129.0	164.7	113.6	90.6	157.6
February	117.6	128.6	156.4	163.6	116.8	86.9	169.2
March	130.5	148.7	164.1	214.9	92.6	109.9	195.1
April	132.2	157.0	176.4	230.4	109.1	91.1	164.3
May	133.9	126.4	151.2	183.9	120.5	89.7	173.0
June	141.5	150.2	142.7	223.2	127.1	149.7	170.5
July	125.4	162.4	116.7	209.9	115.1	92.1	151.8
August	116.7	118.7	96.3	178.8	113.5	77.5	142.6
September	111.6	156.7	133.6	212.7	107.0	102.2	186.8
October	120.5	157.4	142.7	219.7	115.3	96.9	178.3
November	120.9	157.7	125.7	218.9	106.3	101.7	174.6
December	118.9	224.1	109.2	189.7	96.3	178.6	177.5
2005 January	99.7	168.5	111.4	218.5	106.5	105.8	166.6
February	112.1	144.7	161.5	143.6	101.0	97.2	181.0
March	123.9	153.9	150.8	179.0	113.0	140.0	193.8
April	129.8	159.0	155.6	206.8	103.2	100.2	192.7
May	136.9	154.9	162.2	181.9	107.2	83.7	196.6
June	151.8	190.3	147.4	217.2	104.1	129.8	197.3
July	133.0	148.2	77.1	239.2	100.1	98.2	202.1
August	128.1	128.8	138.4	199.2	84.2	78.5	212.2
September	121.3	166.1	123.0	199.3	100.7	129.7	189.0
October	114.8	157.5	150.3	213.0	84.5	111.0	196.7
November	134.0	163.3	201.1	183.4	89.7	103.5	197.6
Nov 05 / Nov 04	10.8%	3.5%	59.9%	-16.2%	-15.6%	1.8%	13.2%

¹ All data for latest month are provisional

Table 6 Industrial Turnover Indices¹

Base year 2000=100

Period	Manufacturing Industries				Transportable Goods Industries			
	Unadjusted		Seasonally adjusted		Unadjusted		Seasonally adjusted	
	Index	Annual % change	Index	% change on preceding period	Index	Annual % change	Index	% change on preceding period
2000	100.0				100.0			
2001	107.7	7.7			107.8	7.8		
2002	110.3	2.4			110.3	2.3		
2003	107.2	-2.8			107.2	-2.8		
2004	108.4	1.1			108.6	1.3		
2000 Quarter 1	86.7		88.7	4.5	86.8		88.7	4.6
2	101.1		98.3	10.8	101.0		98.3	10.8
3	97.7	24.9	101.7	3.5	97.7	24.9	101.8	3.6
4	114.8	30.3	110.8	8.9	114.7	30.2	110.8	8.8
2001 Quarter 1	108.2	24.8	111.3	0.5	108.3	24.8	111.4	0.5
2	112.9	11.7	109.8	-1.3	113.1	12.0	110.0	-1.3
3	99.2	1.5	103.4	-5.8	99.3	1.6	103.5	-5.9
4	110.7	-3.6	106.6	3.1	110.7	-3.5	106.7	3.1
2002 Quarter 1	112.0	3.5	115.4	8.3	112.0	3.4	115.3	8.1
2	110.7	-1.9	107.4	-6.9	110.8	-2.0	107.5	-6.8
3	108.1	9.0	112.2	4.5	108.0	8.8	112.2	4.4
4	110.5	-0.2	106.7	-4.9	110.5	-0.2	106.7	-4.9
2003 Quarter 1	101.7	-9.2	105.2	-1.4	101.8	-9.1	105.3	-1.3
2	110.5	-0.2	107.2	1.9	110.5	-0.3	107.2	1.8
3	104.9	-3.0	108.8	1.5	104.9	-2.9	108.9	1.6
4	111.7	1.1	108.0	-0.7	111.8	1.2	108.1	-0.7
2004 Quarter 1	103.6	1.9	106.7	-1.2	103.8	2.0	106.9	-1.1
2	112.9	2.2	109.1	2.2	113.1	2.4	109.3	2.2
3	104.1	-0.8	107.6	-1.4	104.2	-0.7	107.8	-1.4
4	113.0	1.2	109.4	1.7	113.3	1.3	109.6	1.7
2005 Quarter 1	105.5	1.8	109.3	-0.1	105.9	2.0	109.6	0.0
2	115.5	2.3	111.8	2.3	115.6	2.2	111.9	2.1
3	106.2	2.0	109.8	-1.8	106.3	2.0	110.0	-1.7
2004 January	93.1	-1.4	104.2	-0.6	93.4	-1.2	104.4	-0.5
February	100.8	-1.3	104.7	0.5	101.3	-1.0	105.0	0.6
March	116.1	6.4	110.9	5.9	116.2	6.3	110.9	5.6
April	110.0	4.6	109.8	-1.0	110.3	4.7	109.9	-0.9
May	106.4	-3.9	107.0	-2.6	106.9	-3.5	107.3	-2.4
June	121.5	5.0	110.4	3.2	121.5	5.0	110.5	3.0
July	105.7	3.7	112.2	1.6	105.8	3.8	112.4	1.7
August	93.7	-10.4	101.3	-9.7	93.9	-10.3	101.4	-9.8
September	112.2	3.7	109.0	7.6	112.3	3.8	109.3	7.8
October	111.1	0.6	109.9	0.8	111.3	0.7	110.1	0.7
November	110.1	-2.5	107.5	-2.2	110.4	-2.4	107.7	-2.2
December	117.9	5.5	110.8	3.1	118.3	5.8	111.2	3.2
2005 January	99.3	6.6	111.4	0.5	99.7	6.8	111.8	0.5
February	103.2	2.3	107.1	-3.8	103.7	2.4	107.6	-3.8
March	114.4	-1.5	109.1	1.9	114.8	-1.2	109.5	1.8
April	110.7	0.6	110.5	1.3	111.0	0.6	110.7	1.1
May	109.5	2.9	110.1	-0.4	109.6	2.6	110.2	-0.5
June	126.3	4.0	114.6	4.0	126.3	3.9	114.7	4.1
July	102.1	-3.5	108.4	-5.4	102.2	-3.4	108.6	-5.3
August	100.2	6.9	108.2	-0.2	100.4	6.9	108.3	-0.3
September	116.0	3.4	112.7	4.1	116.2	3.5	113.1	4.4
October	111.6	0.5	110.5	-1.9	112.0	0.7	110.9	-1.9
November	122.4	11.2	119.5	8.1	123.1	11.5	120.1	8.3

¹ All data for latest month are provisional

Table 7 Turnover Indices for Industrial Sectors

Base year 2000=100

October 2005

Industrial Sector	NACE	Weighting base 2000 Turnover EUR million	Index - Unadjusted				Index - Seasonally adjusted			
			October 2005		Aug 2005 - Oct 2005		October 2005		Aug 2005 - Oct 2005	
			Index	Annual % change	Index	Annual % change	Index	% change on preceding month	Index	% change on preceding 3 months
Food products and beverages; tobacco products	15-16	17,413.8	108.4	-3.4	112.7	-0.3	110.3	-2.9	113.2	-4.9
Food products and beverages	15	16,121.3	115.1	-1.6	119.7	1.7	117.3	-3.5	120.4	-3.9
Food products	151-158	13,724.1	115.6	-2.7	122.1	1.5	119.7	-4.9	124.1	-3.0
Meat and meat products	151	3,563.6	116.8	7.5	109.3	3.8	114.9	7.5	107.6	4.7
Dairy products	155	3,022.6	95.3	-2.2	103.1	-4.4	93.2	-7.4	96.6	8.8
Bread; fresh pastry goods and cakes; rusks and biscuits; preserved pastry goods and cakes	1581,1582	558.6	104.9	-17.2	101.6	-8.0	101.5	0.2	103.8	5.2
Sugar; cocoa; chocolate and sugar confectionery	1583,1584	593.5	105.3	14.5	104.7	2.7	115.0	6.6	112.4	-8.3
Grain mill products, starches and starch products; prepared animal feeds	156,157	842.8	103.4	-2.1	99.0	0.5	109.0	-4.1	111.6	0.1
Other foods	152-154,1585-1589	5,143.0	131.0	-8.3	150.0	3.7	143.5	-11.7	158.0	-8.9
Beverages	159	2,397.2	112.1	5.1	106.2	2.8	104.3	6.2	99.5	-8.9
Tobacco products	16	1,292.5	25.8	-52.2	25.5	-52.1	25.1	9.0	25.1	-32.7
Textiles and textile products	17-18	778.4	61.3	-2.7	60.0	-1.3	59.1	-1.7	63.1	-0.5
Textiles	17	477.3	61.4	-4.2	60.5	1.3	59.8	-2.0	65.0	-0.6
Wearing apparel; dressing and dyeing of fur	18	301.1	61.2	-0.4	59.2	-5.3	58.9	-1.1	60.3	-0.3
Leather and leather products	19	78.0	21.5	-30.2	21.7	-30.2	17.5	-23.3	20.2	12.8
Wood and wood products	20	853.2	132.2	3.9	133.0	5.6	124.1	-2.4	129.4	3.6

Table 7 Turnover Indices for Industrial Sectors

Base year 2000=100

October 2005

Industrial Sector	NACE	Weighting base 2000 Turnover EUR million	Index - Unadjusted				Index - Seasonally adjusted			
			October 2005		Aug 2005 - Oct 2005		October 2005		Aug 2005 - Oct 2005	
			Index	Annual % change	Index	Annual % change	Index	% change on preceding month	Index	% change on preceding 3 months
Pulp, paper and paper products; publishing, printing and reproduction of recorded media	21-22	10,026.6	138.0	2.0	131.5	4.6	140.1	2.0	136.2	-6.8
Pulp, paper and paper products	21	753.3	100.8	8.8	98.4	-1.3	100.5	3.2	96.9	-0.4
Publishing, printing and reproduction of recorded media	22	9,273.4	141.0	1.6	134.2	4.9	143.2	1.9	139.4	-7.4
Publishing; printing and service activities related to printing	221,222	1,326.5	109.3	8.6	98.2	2.1	103.4	11.2	97.1	-0.6
Reproduction of recorded media	223	7,946.8	146.3	0.8	140.2	5.3	149.3	0.9	146.3	-8.8
Chemicals, chemical products and man-made fibres	24	22,303.9	119.5	-4.8	118.0	2.7	111.0	-7.6	117.0	-4.6
Basic chemicals	241	17,371.6	109.3	-5.4	109.5	4.6	99.7	-11.4	106.1	-7.3
Pharmaceuticals, medicinal chemicals and botanical products	244	3,288.9	194.7	1.2	183.0	2.6	184.2	5.1	190.1	6.9
Other chemicals and chemical products	242,243,245-247	1,643.4	77.1	-21.0	78.3	-17.9	79.8	-10.7	85.5	-5.5
Rubber and plastic products	25	1,279.3	99.3	2.6	96.8	4.0	99.6	0.7	100.4	4.0
Other non-metallic mineral products	26	1,531.1	115.6	1.7	115.5	1.3	112.5	-2.0	112.5	0.6
Basic metals and fabricated metal products	27-28	1,881.1	107.8	14.5	101.3	13.7	106.0	5.2	102.9	11.0
Basic metals	27	469.9	103.6	46.6	86.5	27.6	100.2	15.4	88.1	15.8
Fabricated metal products, except machinery and equipment	28	1,411.2	109.2	7.0	106.2	10.4	108.0	2.0	107.0	8.5
Machinery and equipment, not elsewhere classified	29	1,712.4	89.6	-5.2	86.2	-7.7	91.4	0.8	91.2	6.9

Table 7 Turnover Indices for Industrial Sectors

Base year 2000=100

October 2005

Industrial Sector	NACE	Weighting base 2000 Turnover EUR million	Index - Unadjusted				Index - Seasonally adjusted			
			October 2005		Aug 2005 - Oct 2005		October 2005		Aug 2005 - Oct 2005	
			Index	Annual % change	Index	Annual % change	Index	% change on preceding month	Index	% change on preceding 3 months
Electrical and optical equipment	30-33	30,594.4	101.8	6.0	97.1	5.9	102.2	1.5	100.8	6.2
Office machinery and computers	30	18,900.5	95.5	3.7	92.0	4.0	97.1	-9.8	98.7	10.5
Electrical machinery and apparatus, not elsewhere classified	31	2,384.2	124.4	-16.3	115.5	-7.8	121.8	1.7	118.0	4.7
Radio, television and communication equipment and apparatus	32	5,969.2	57.0	10.2	54.7	1.5	61.6	18.4	56.3	7.4
Medical, precision and optical instruments, watches and clocks	33	3,340.6	201.3	25.9	188.2	22.8	205.0	21.8	195.4	3.9
Transport equipment	34-35	1,122.7	114.8	15.6	98.2	3.3	115.5	18.9	102.8	3.6
Manufacturing not elsewhere classified; recycling; refined petroleum products	36,37,23	1,328.0	108.8	0.4	99.8	3.3	103.4	4.1	103.3	3.2
Manufacturing industries		90,902.8	111.6	0.5	109.2	3.3	110.5	-1.9	110.5	-0.5
Mining and quarrying	10-14	991.9	145.5	16.7	132.7	12.9	147.3	3.3	141.7	16.8
Transportable goods industries		91,894.7	112.0	0.7	109.5	3.5	110.9	-1.9	110.7	-0.4
<i>of which: Industries mainly or wholly producing¹</i>										
Capital goods		27,565.1	107.5	6.0	102.2	6.2	107.1	-3.9	108.2	8.9
Intermediate products		31,486.1	102.2	-2.3	101.3	3.1	98.4	-5.6	101.5	-1.0
Consumer goods		32,584.2	125.0	-0.9	123.6	1.7	123.3	-2.4	124.9	-1.3
<i>of which: Durable consumer goods</i>		1,800.6	115.2	17.8	103.5	14.2	113.8	16.3	106.4	4.0
Non-durable consumer goods		30,783.6	125.6	-1.7	124.8	1.2	124.0	-3.2	125.7	-1.8

¹ Excludes Energy producing industries

Table 7 Turnover Indices for Industrial Sectors

Base year 2000=100

November 2005

Industrial Sector	NACE	Weighting base 2000 Turnover EUR million	Index - Unadjusted				Index - Seasonally adjusted			
			November 2005		Sep 2005 - Nov 2005		November 2005		Sep 2005 - Nov 2005	
			Index	Annual % change	Index	Annual % change	Index	% change on preceding month	Index	% change on preceding 3 months
Food products and beverages; tobacco products	15-16	17,413.8	120.6	7.5	113.9	1.5	117.2	6.2	113.8	-4.7
Food products and beverages	15	16,121.3	128.3	10.3	121.0	3.7	127.3	8.6	122.2	-3.1
Food products	151-158	13,724.1	130.7	12.1	122.9	4.1	134.6	12.5	126.9	-1.7
Meat and meat products	151	3,563.6	116.6	12.3	113.8	7.3	113.5	-1.3	111.7	8.3
Dairy products	155	3,022.6	95.1	4.6	98.6	0.9	110.7	18.7	101.8	11.5
Bread; fresh pastry goods and cakes; rusks and biscuits; preserved pastry goods and cakes	1581,1582	558.6	106.0	-11.5	102.6	-12.5	103.7	2.3	102.2	-2.6
Sugar; cocoa; chocolate and sugar confectionery	1583,1584	593.5	104.2	12.9	104.1	5.3	92.3	-19.7	104.8	-12.3
Grain mill products, starches and starch products; prepared animal feeds	156,157	842.8	107.3	-6.4	103.5	-0.9	101.3	-7.1	108.0	-3.1
Other foods	152-154,1585-1589	5,143.0	171.0	19.4	151.0	5.7	182.4	27.1	163.4	-6.5
Beverages	159	2,397.2	114.8	-0.6	110.3	1.1	94.2	-9.7	98.8	-8.7
Tobacco products	16	1,292.5	23.3	-60.0	24.7	-55.3	18.3	-27.2	22.1	-30.5
Textiles and textile products	17-18	778.4	58.0	-5.3	60.1	-4.3	56.3	-4.7	58.5	-10.7
Textiles	17	477.3	57.9	-11.1	60.0	-5.5	52.5	-12.2	57.7	-15.4
Wearing apparel; dressing and dyeing of fur	18	301.1	58.2	5.6	60.3	-2.3	62.7	6.5	60.5	-1.5
Leather and leather products	19	78.0	17.6	-33.3	20.8	-32.2	14.0	-19.9	18.1	-4.7
Wood and wood products	20	853.2	138.5	13.6	136.3	7.4	135.9	9.5	129.3	0.6

Table 7 Turnover Indices for Industrial Sectors

Base year 2000=100

November 2005

Industrial Sector	NACE	Weighting base 2000 Turnover EUR million	Index - Unadjusted				Index - Seasonally adjusted			
			November 2005		Sep 2005 - Nov 2005		November 2005		Sep 2005 - Nov 2005	
			Index	Annual % change	Index	Annual % change	Index	% change on preceding month	Index	% change on preceding 3 months
Pulp, paper and paper products; publishing, printing and reproduction of recorded media	21-22	10,026.6	145.7	10.1	142.9	6.1	143.6	2.5	140.3	-0.9
Pulp, paper and paper products	21	753.3	100.7	7.2	100.3	2.1	100.0	-0.5	99.2	4.0
Publishing, printing and reproduction of recorded media	22	9,273.4	149.4	10.3	146.4	6.3	147.0	2.7	143.6	-1.4
Publishing; printing and service activities related to printing	221,222	1,326.5	102.6	17.5	103.4	8.3	102.4	-1.0	99.5	2.8
Reproduction of recorded media	223	7,946.8	157.2	9.6	153.5	6.1	154.4	3.4	150.6	-2.8
Chemicals, chemical products and man-made fibres	24	22,303.9	157.2	15.4	134.8	6.1	149.6	34.8	127.4	9.0
Basic chemicals	241	17,371.6	160.2	23.8	130.8	10.8	152.7	53.2	122.3	18.4
Pharmaceuticals, medicinal chemicals and botanical products	244	3,288.9	181.5	-6.8	183.9	-4.2	171.1	-7.1	176.6	-10.6
Other chemicals and chemical products	242,243,245-247	1,643.4	76.7	-16.0	78.6	-16.1	81.9	2.6	83.8	-2.4
Rubber and plastic products	25	1,279.3	101.1	3.0	100.4	4.3	99.6	-0.1	99.4	1.9
Other non-metallic mineral products	26	1,531.1	108.4	-5.8	115.1	0.1	104.1	-7.5	110.4	-0.8
Basic metals and fabricated metal products	27-28	1,881.1	103.6	12.1	104.4	12.7	98.6	-7.0	101.6	4.9
Basic metals	27	469.9	98.3	29.4	94.0	35.4	92.3	-8.0	92.9	15.5
Fabricated metal products, except machinery and equipment	28	1,411.2	105.4	7.6	107.8	7.5	100.8	-6.7	104.8	2.8
Machinery and equipment, not elsewhere classified	29	1,712.4	99.6	19.1	94.4	3.4	95.4	4.4	92.5	3.1

Table 7 Turnover Indices for Industrial Sectors

Base year 2000=100

November 2005

Industrial Sector	NACE	Weighting base 2000 Turnover EUR million	Index - Unadjusted				Index - Seasonally adjusted			
			November 2005		Sep 2005 - Nov 2005		November 2005		Sep 2005 - Nov 2005	
			Index	Annual % change	Index	Annual % change	Index	% change on preceding month	Index	% change on preceding 3 months
Electrical and optical equipment	30-33	30,594.4	96.9	11.7	101.6	6.4	99.9	-2.2	100.9	1.7
Office machinery and computers	30	18,900.5	90.0	13.9	98.4	6.5	97.8	0.7	101.0	6.5
Electrical machinery and apparatus, not elsewhere classified	31	2,384.2	122.0	15.3	121.9	-2.4	126.3	3.6	122.6	4.5
Radio, television and communication equipment and apparatus	32	5,969.2	58.9	0.2	56.2	2.0	53.3	-13.6	55.5	5.3
Medical, precision and optical instruments, watches and clocks	33	3,340.6	186.0	11.3	187.0	13.8	178.5	-12.9	183.3	-6.4
Transport equipment	34-35	1,122.7	114.9	13.9	107.8	8.2	108.2	-6.3	106.6	6.7
Manufacturing not elsewhere classified; recycling; refined petroleum products	36,37,23	1,328.0	109.4	-6.1	107.0	0.4	96.8	-6.4	99.7	-4.3
Manufacturing industries		90,902.8	122.4	11.2	116.9	5.1	119.5	8.1	114.3	3.6
Mining and quarrying	10-14	991.9	182.5	34.2	154.5	21.4	172.7	17.2	154.4	20.2
Transportable goods industries		91,894.7	123.1	11.5	117.3	5.4	120.1	8.3	114.8	3.9
<i>of which: Industries mainly or wholly producing¹</i>										
Capital goods		27,565.1	102.5	14.6	107.7	7.4	106.6	-0.4	108.4	3.2
Intermediate products		31,486.1	130.4	14.8	113.9	7.0	126.2	28.2	110.0	13.1
Consumer goods		32,584.2	132.3	5.7	128.2	2.2	126.4	2.6	125.4	-3.4
<i>of which: Durable consumer goods</i>		1,800.6	111.6	7.0	110.7	13.4	99.5	-12.6	103.4	-0.7
Non-durable consumer goods		30,783.6	133.5	5.7	129.2	1.7	128.2	3.4	126.9	-3.1

¹ Excludes Energy producing industries

Table 8 Turnover Indices for selected sectors¹

Base year 2000=100

Period	Indices - Unadjusted						
	Turnover						
	Food products and beverages 15	Publishing, printing and reproduction of recorded media 22	Basic chemicals 241	Pharmaceuticals, medicinal chemicals and botanical products 244	Other chemicals and chemical products 24 (other)	Office machinery and computers 30	Medical, precision and optical instruments, etc 33
2004 January	103.6	110.4	94.5	131.2	98.6	76.5	141.0
February	107.7	114.1	123.7	140.0	102.0	72.0	157.0
March	122.0	117.1	147.5	167.6	94.5	95.6	182.8
April	128.3	128.1	132.5	171.2	106.2	76.1	156.6
May	127.5	112.6	120.9	168.9	114.9	74.2	160.5
June	129.0	135.2	130.2	192.2	131.6	119.9	146.9
July	118.7	144.8	107.7	193.5	104.0	72.9	149.7
August	119.5	105.9	90.1	154.2	96.5	66.5	134.0
September	116.8	138.9	109.0	188.5	92.3	106.3	165.6
October	117.0	138.8	115.5	192.4	97.6	92.0	159.9
November	116.4	135.4	129.4	194.7	91.4	79.0	167.1
December	124.1	190.9	85.6	165.4	81.4	139.4	171.8
2005 January	93.8	143.3	83.9	207.0	97.7	86.5	154.7
February	106.9	121.2	131.6	115.3	93.7	76.3	174.9
March	122.9	126.7	124.5	143.6	94.9	112.2	185.0
April	122.3	134.7	126.1	178.3	91.2	80.4	186.3
May	128.8	132.1	133.2	156.9	100.5	69.2	184.9
June	144.3	171.1	125.9	190.1	96.8	113.3	189.1
July	128.1	132.2	73.1	216.9	91.9	82.5	185.5
August	124.5	114.1	98.1	179.0	75.9	71.5	189.4
September	119.1	148.2	121.1	176.5	81.7	109.4	175.1
October	115.1	141.0	109.3	194.7	77.1	95.5	201.3
November	128.3	149.4	160.2	181.5	76.7	90.0	186.0
Nov 05 / Nov 04	10.3%	10.3%	23.8%	-6.8%	-16.0%	13.9%	11.3%

¹ All data for latest month are provisional

Table 9 Main Industrial Groupings¹

Base year 2000=100

Period	Indices - Unadjusted									
	Production					Turnover				
	Capital goods	Intermediate goods	Consumer goods	Durable consumer goods	Non-durable consumer goods	Capital goods	Intermediate goods	Consumer goods	Durable consumer goods	Non-durable consumer goods
2004 January	116.3	107.0	117.3	80.5	121.8	86.1	89.0	103.4	86.9	104.4
February	119.1	125.7	120.0	82.2	124.6	84.5	108.3	108.3	98.3	108.9
March	137.2	132.6	136.3	84.3	142.6	105.0	123.7	118.3	91.8	119.9
April	123.9	138.0	141.8	86.2	148.5	89.5	113.2	125.0	87.5	127.2
May	124.6	123.8	129.5	82.9	135.1	88.1	108.3	121.4	93.6	123.0
June	141.1	123.3	144.6	82.6	152.2	117.6	114.3	132.1	96.1	134.2
July	121.2	108.6	137.6	82.1	144.3	86.0	100.2	128.3	91.7	130.5
August	102.8	95.6	117.1	67.6	123.1	76.4	89.5	113.1	83.4	114.8
September	129.8	115.4	130.1	79.2	136.3	110.2	100.9	125.2	90.9	127.2
October	131.6	121.4	135.7	85.2	141.9	101.4	104.6	126.1	97.8	127.8
November	121.1	119.3	135.3	86.1	141.3	89.4	113.5	125.1	104.2	126.3
December	146.6	101.9	144.8	78.9	152.9	131.1	84.0	140.2	94.3	142.9
2005 January	127.9	105.5	127.4	76.9	133.6	94.9	86.2	116.1	93.9	117.4
February	119.5	130.8	117.5	82.5	121.7	88.1	112.9	107.4	100.5	107.8
March	140.5	127.2	130.0	84.0	135.7	115.0	110.2	118.5	99.0	119.6
April	135.4	128.7	137.4	85.4	143.7	95.3	110.7	124.4	101.7	125.7
May	123.9	132.5	136.2	83.1	142.7	84.7	114.6	125.9	99.0	127.5
June	143.8	124.0	155.7	80.7	164.9	117.0	111.9	148.2	103.2	150.9
July	137.4	81.0	141.0	86.5	147.6	95.1	78.6	131.3	104.4	132.9
August	128.5	117.2	126.3	73.1	132.8	86.4	93.7	119.0	90.6	120.6
September	143.2	109.1	134.7	84.8	140.8	113.1	108.0	127.0	105.6	128.2
October	142.7	124.6	131.7	92.7	136.4	107.5	102.2	125.0	115.2	125.6
November	140.5	152.2	136.9	87.1	142.9	102.5	130.4	132.3	111.6	133.5
Nov 05 / Nov 04	16.1%	27.6%	1.2%	1.2%	1.2%	14.6%	14.8%	5.7%	7.0%	5.7%

¹ All data for latest month are provisional

Table 10 New Orders Indices for selected sectors¹

Base year 2000=100

Period	New Orders Indices - Unadjusted						
	Industrial sector and Nace code						
	Total for Manufacturing industries (15-37)	Publishing, printing and reproduction of recorded media 22	Basic chemicals 241	Pharmaceuticals, medicinal chemicals and botanical products 244	Other chemicals and chemical products 24 (other)	Office machinery and computers 30	Medical, precision and optical instruments, etc 33
2004 January	93.3	111.6	94.5	134.3	98.1	76.4	141.3
February	100.4	114.0	123.5	133.7	101.6	72.1	155.9
March	114.7	109.2	147.3	165.4	94.3	94.4	183.2
April	109.8	130.4	132.5	174.2	108.5	74.8	153.9
May	106.0	112.5	120.9	170.3	117.1	72.9	157.4
June	120.2	131.7	130.2	173.4	131.7	120.5	143.5
July	105.5	145.9	107.7	191.1	103.2	74.2	141.5
August	92.6	105.4	90.0	147.5	96.1	64.0	128.5
September	112.1	136.8	109.0	182.1	92.2	109.1	168.1
October	110.4	141.2	115.5	182.8	97.8	91.9	159.7
November	110.5	136.0	129.4	188.6	92.8	79.4	178.9
December	118.3	191.7	85.6	160.3	81.7	142.8	171.7
2005 January	98.4	143.4	83.9	201.1	98.5	84.7	150.0
February	102.6	120.4	131.6	118.4	94.4	75.8	166.3
March	113.5	122.4	124.3	145.2	95.5	111.6	185.0
April	110.2	132.7	126.0	174.3	93.5	81.8	182.2
May	106.4	131.9	120.9	157.7	101.5	67.6	177.5
June	124.5	165.7	120.7	178.5	96.8	115.2	189.6
July	100.7	137.1	64.8	208.2	92.2	83.7	179.7
August	99.3	113.9	97.4	174.3	76.0	70.1	185.5
September	114.7	140.7	117.0	171.2	82.0	113.0	169.4
October	110.5	143.8	108.5	185.0	77.7	95.5	174.6
November	120.3	145.9	158.1	175.6	76.8	88.5	175.1
Nov 05 / Nov 04	8.9%	7.3%	22.2%	-6.9%	-17.3%	11.4%	-2.1%

¹ All data for latest month are provisional

Table 11 New Orders Indices for selected sectors¹

Base year 2000=100

New Orders Indices - Seasonally adjusted								
Industrial sector and Nace code								
Period	Total for Manufacturing industries (15-37)	Publishing, printing and reproduction of recorded media 22	Basic chemicals 241	Pharmaceuticals, medicinal chemicals and botanical products 244	Other chemicals and chemical products 24 (other)	Office machinery and computers 30	Medical, precision and optical instruments, etc 33	
2004 January	104.3	124.8	114.8	149.1	95.6	77.7	148.6	
February	104.2	120.6	119.2	145.4	96.8	77.4	157.5	
March	109.9	99.9	125.4	164.5	88.7	86.4	163.2	
April	109.3	134.0	131.5	161.2	101.6	77.0	155.5	
May	106.5	127.4	123.2	161.5	119.8	79.9	163.9	
June	109.5	104.1	127.8	158.3	111.7	102.5	142.5	
July	112.0	180.6	118.8	185.3	100.4	84.5	146.4	
August	100.2	126.2	98.8	173.9	109.9	82.7	146.3	
September	108.9	131.2	101.6	180.4	101.8	106.5	160.6	
October	109.4	143.4	106.3	173.5	100.7	93.4	163.6	
November	107.5	134.9	120.8	176.8	98.0	85.9	164.6	
December	111.1	152.2	93.7	174.3	90.8	106.0	167.5	
2005 January	110.3	161.3	102.1	222.7	96.0	86.5	157.9	
February	106.6	127.3	126.5	128.7	89.5	81.6	168.4	
March	108.6	111.9	105.3	143.9	89.7	101.9	164.9	
April	109.8	136.3	126.5	161.0	87.6	84.5	184.2	
May	107.0	149.0	123.5	149.5	104.0	74.1	184.7	
June	113.2	131.4	118.1	163.2	81.9	97.5	189.0	
July	106.9	169.7	71.7	201.6	89.4	95.2	185.5	
August	107.5	135.8	106.8	205.0	86.5	90.8	210.8	
September	111.2	135.0	108.6	169.7	90.7	110.1	162.1	
October	109.5	146.0	100.1	175.5	80.1	97.2	178.5	
November	117.0	144.2	147.5	164.9	81.5	96.1	160.7	
Nov 05 / Oct 05	6.8%	-1.3%	47.3%	-6.0%	1.7%	-1.1%	-10.0%	

¹ All data for latest month are provisional

Background Notes

Introduction The monthly industrial production index monitors current trends in the volume of production of industrial local units with three or more persons engaged. The primary purpose of the index is to measure changes in value added at constant prices.

The monthly index of turnover measures the change in the level of sales each month of industrial products, whether manufactured in the month in question or in previous periods (excluding non-industrial activity where practicable). The turnover indices outlined in this release are exclusive of VAT.

The principal difference between the production and turnover indices is that the production index traces the quantitative volume of production (i.e. effect of price changes excluded) each month, whether sold or not, whereas the turnover index reflects both the volume of sales and the price level. Starting with January 2004 updated industrial production and turnover indices are being published to base year 2000=100.

The new orders indices measures trends in new orders accepted, including those received and filled during the last month. Orders are valued at the amounts invoiced or still to be invoiced (excluding VAT).

Sample covered The monthly survey which provides data for calculating the indices covers the larger local units which between them account for the bulk of industrial output – in general those which in the base year 2000 had twenty or more persons engaged. For certain sectors the threshold of 20 persons engaged is lowered where this is considered necessary to ensure representativeness of the sample or where data for a sector would have to be kept confidential if the 20 persons engaged threshold were applied. The business activity classifications are based on the Statistical Classification of Economic Activities in the European Community (Nace Rev.1.1).

Methodology Working day adjusted individual production, turnover and new orders sub-indices are compiled for each detailed NACE class. These sub-indices are combined to provide the indices for broader sectoral groupings, using as weights for a sector the gross value added at factor cost for production indices, and turnover in goods produced and industrial services provided to others for turnover and new orders indices, for all units in that sector covered in the 2000 Census of Industrial Production (CIP). Weights and base year are revised every five years.

The production index is compiled by valuing quantitative commodity data at base year prices. The series has been compiled using updated prices from the Prodcum 2000 survey. In cases where reliable quantity data cannot be obtained current value data is converted to values at base year prices using suitable Wholesale Price Index (WPI) deflators.

New orders indices have been produced from January 2004 onwards using reported monthly orders data. In the event of non-response, the reported turnover is used as an estimate for the calculation of new orders indices.

Seasonal Adjustment The indices are adjusted using the multiplicative version of the X-11 Variant of the US Bureau of the Census Method II Seasonal Adjustment Program. This seasonal adjustment process is carried out once a year using the latest (currently up to and including December 2004) monthly production patterns available. Each index is independently seasonally adjusted i.e. the adjusted indices of groupings of sectors are not systematically derivable as weighted averages of their component parts.

Retrospection To enable comparisons to be made with earlier periods efforts were made to re-cast indices calculated under the previous system (base year 1995=100) to take account of the changes between the old and current systems. It must be emphasised that the results of this exercise are of an approximate nature. Aggregate indices have been re-calculated using the 2000 sectoral weights from January 2001. All indices prior to 2001 have been re-scaled to take account of the base year 2000=100.