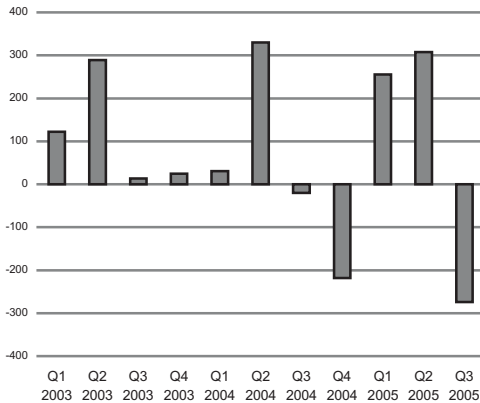




Total Stock Changes €m



Industrial Stocks

Quarter 2 2005 Final Figures

Quarter 3 2005 Preliminary Estimates

Changes in Stocks held

	Q2 2005	Q3 2005
	€m	€m
Materials and Fuel	-8.9	-3.0
Finished Goods	104.4	44.2
Work-in-progress	228.5	-335.8
Goods purchased for resale	26.5	19.5
Total Stocks	350.3	-274.8

Industrial Stocks down €274.8m in Third Quarter

Total stocks held by industry decreased by €274.8m in the third quarter of 2005, following an increase of €350.3m in the second quarter of 2005. *See Table 1.*

The principle reason for the third quarter change was a decrease of €335.8m in Work-in-progress. *See Tables 2-5.*

The breakdown of the components of stocks shows:

- ◆ A decrease of €61.9m in stocks of materials and fuel held in NACE 24, the chemical products sector, in the third quarter of 2005 following a decrease of €78.5m in the previous quarter. *See Table 2.*
- ◆ An increase of €28.6m in stocks of finished goods held in NACE 22, the publishing and printing sector, in the third quarter, following an increase of €20.0m in the previous quarter. *See Table 3.*
- ◆ Stocks of work-in-progress goods held in NACE 24, the chemical products sector, which had increased by €234.6m in the second quarter, decreased by €370.7m in the third quarter of 2005. *See Table 4.*

For more information contact Eugene Larkin at 021- 453 5243.

Published by the Central Statistics Office, Ireland.

Ardee Road
Dublin 6
Ireland

Skehard Road
Cork
Ireland

LoCall: 1890 313 414 (ROI)
0870 8760256 (UK/NI)

Tel: +353-1 498 4000
Fax: +353-1 498 4229

Tel: +353-21 453 5000
Fax: +353-21 453 5555

Both offices may be contacted through any of these telephone numbers.

CSO on the Web: www.cso.ie
and go to

Releases and Publications: Business Sectors: Industry

Director General: Donal Garvey

Enquiries:

Stocks/Assets Statistics QSI Section, ext 5243
Queries and Sales Information Section, ext 5032
information@cso.ie

© Central Statistics Office
The contents of this release may be quoted provided the source is given clearly and accurately. Reproduction for own or internal use is permitted.

Table 1 Total Stocks held in Industry (€million)

NACE Code	Description	2003					2004					2005					
		2003 Opening CIP Level					2003 Closing CIP Level					2004 Closing Level					
			Q1 ¹	Q2 ¹	Q3 ¹	Q4 ¹		Year ¹	Q1	Q2	Q3		Q4	Year	Q1	Q2	Q3*
10-14	Mining and quarrying	91.9	-2.3	-1.2	25.6	-12.7	9.4	101.3	-14.4	25.0	11.8	-7.3	15.1	116.4	-4.9	13.3	25.6
	Manufacturing:																
15-16	Food products, beverages and tobacco	1498.2	12.2	-22.6	54.1	10.7	54.4	1552.6	-97.9	21.5	106.8	-52.5	-22.1	1530.5	42.5	22.3	84.9
17	Textiles	90.9	-0.9	-3.1	-1.3	-5.6	-10.9	80.0	0.7	-2.5	1.6	-2.1	-2.3	77.7	0.5	1.7	-0.4
18	Wearing apparel	99.9	-4.5	1.8	-4.3	1.8	-5.2	94.7	-0.9	-3.8	-6.0	11.2	0.5	95.2	-1.0	-6.0	-2.1
19	Leather products	14.6	-1.2	0.0	-0.1	1.8	0.5	15.1	-0.4	0.0	-0.9	2.4	1.1	16.2	0.6	-0.1	0.7
20	Wood and wood products	142.0	6.2	-2.2	5.3	5.9	15.2	157.2	9.9	3.3	0.4	17.4	31.0	188.2	4.2	15.0	3.3
21	Paper and paper products	65.2	4.1	1.6	-0.6	-1.3	3.8	69.0	-2.5	2.4	-5.8	3.1	-2.8	66.2	4.6	0.5	-2.9
22	Publishing and printing	191.9	-21.3	-45.1	138.9	-116.7	-44.2	147.7	-31.2	-1.4	31.9	-48.3	-49.0	98.7	-14.2	21.3	29.6
24	Chemical products	2361.1	138.8	303.4	-134.5	-11.7	296.0	2657.1	106.6	97.4	-181.6	-20.3	2.1	2659.2	134.3	180.8	-455.1
25	Rubber and plastic products	134.2	0.1	-5.7	-4.1	8.0	-1.7	132.5	-2.3	-3.2	7.6	3.8	5.9	138.4	7.7	-3.3	2.1
26	Other non-metallic mineral products	183.2	10.2	8.5	-12.2	-1.9	4.6	187.8	6.4	21.6	-10.1	-7.8	10.1	197.9	4.7	7.4	7.3
27	Basic metals	53.9	-0.4	5.6	-0.3	-3.0	1.9	55.8	-0.8	-0.7	3.1	1.9	3.5	59.3	2.2	22.9	0.3
28	Fabricated metals (excl. machinery)	181.4	14.9	7.0	-1.4	-16.4	4.1	185.5	10.9	14.9	13.7	1.0	40.5	226.0	6.8	3.6	5.6
29	Machinery not elsewhere classified	214.6	-0.5	-1.1	-8.7	-0.7	-11.0	203.6	18.9	-0.5	6.6	2.9	27.9	231.5	1.2	25.1	2.7
30	Office machinery and computers	591.1	36.7	-68.9	-46.9	21.4	-57.7	533.4	-66.3	61.8	-7.1	-23.4	-35.0	498.4	8.3	-3.7	32.5
31	Other electrical equipment	321.9	-8.2	-7.9	-1.6	0.9	-16.8	305.1	70.0	-25.5	14.0	1.1	59.6	364.7	20.8	-9.7	6.6
32	Communication equipment	286.2	-13.5	-22.6	-11.4	-27.3	-74.8	211.4	22.5	131.6	-7.9	-21.7	124.5	335.9	-11.6	11.3	-11.7
33	Medical and optical instruments	458.0	31.9	55.5	24.9	123.2	235.5	693.5	-11.2	-27.6	0.6	-38.8	-77.0	616.5	21.8	-21.6	45.6
34	Motor vehicles	64.7	6.0	1.7	-5.7	10.3	12.3	77.0	-8.5	15.2	0.7	13.8	21.2	98.2	-0.3	1.7	-2.8
35	Other transport equipment	70.0	-4.2	-4.8	1.2	-3.9	-11.7	58.3	4.8	-2.8	-4.1	-1.0	-3.1	55.2	0.4	0.1	12.3
36-7,23	Other manufacturing	274.4	-30.0	11.3	-2.9	-2.9	-24.5	249.9	4.1	2.8	5.1	-6.2	5.8	255.7	27.9	25.2	-44.3
40	Electricity and gas supply	200.8	-14.2	12.4	-18.8	24.2	3.6	204.4	11.9	0.8	1.9	-14.2	0.4	204.8	-1.2	42.5	-14.6
10-40	All industries	7590.1	159.9	223.6	-4.8	4.1	382.8	7972.9	30.3	330.3	-17.7	-185.0	157.9	8130.8	255.3	350.3	-274.8
10-37	Transportable goods industries	7389.3	174.1	211.2	14.0	-20.1	379.2	7768.5	18.4	329.5	-19.6	-170.8	157.5	7926.0	256.5	307.8	-260.2
15-37	Manufacturing industries	7297.4	176.4	212.4	-11.6	-7.4	369.8	7667.2	32.8	304.5	-31.4	-163.5	142.4	7809.6	261.4	294.5	-285.8

* Preliminary Estimates

¹Revised due to 2003 Census of Industrial Production (provisional figures)

Table 2 Stocks of Materials and Fuel held in Industry (€ million)

NACE Code	Description	2003					2004					2005					
		2003 Opening CIP Level	Q1 ¹	Q2 ¹	Q3 ¹	Q4 ¹	Year ¹	2003 Closing CIP Level	Q1	Q2	Q3	Q4	Year	2004 Closing Level	Q1	Q2	Q3*
10-14	Mining and quarrying	27.6	-0.5	1.7	2.5	-2.3	1.4	29.0	-12.1	13.1	7.1	-3.4	4.7	33.7	-2.5	10.9	12.0
	Manufacturing:																
15-16	Food products, beverages and tobacco	463.3	-23.3	6.2	23.6	-5.6	0.9	464.2	-10.7	4.2	49.1	-24.3	18.3	482.5	-15.5	-10.9	66.0
17	Textiles	33.9	-0.3	0.2	-0.2	-1.8	-2.1	31.8	1.6	-2.0	2.2	0.3	2.1	33.9	0.7	-0.9	1.3
18	Wearing apparel	21.9	4.3	0.6	-3.8	-2.8	-1.7	20.2	1.1	-1.9	-1.9	-0.8	-3.5	16.7	-2.0	0.1	-1.1
19	Leather products	3.6	0.0	0.2	0.4	-0.3	0.3	3.9	-0.3	0.0	-0.3	1.0	0.4	4.3	0.2	-0.1	-0.2
20	Wood and wood products	79.0	2.2	0.8	8.4	1.9	13.3	92.3	6.5	1.4	-2.2	15.4	21.1	113.4	-0.1	14.2	3.3
21	Paper and paper products	36.4	2.1	2.1	-0.2	-2.3	1.7	38.1	-2.6	0.8	-4.6	2.5	-3.9	34.2	3.0	0.6	-2.7
22	Publishing and printing	34.7	-4.2	-2.8	4.8	3.1	0.9	35.6	-1.1	-2.5	2.9	-2.4	-3.1	32.5	0.4	2.0	0.3
24	Chemical products	822.1	-10.2	33.4	-70.9	44.6	-3.1	819.0	51.9	69.7	-81.5	54.7	94.8	913.8	-26.9	-78.5	-61.9
25	Rubber and plastic products	63.4	-2.4	-1.7	-1.5	-1.7	-7.3	56.1	0.0	1.2	3.1	1.6	5.9	62.0	3.3	2.2	2.5
26	Other non-metallic mineral products	71.7	0.2	0.6	-0.8	-4.3	-4.3	67.4	2.3	8.9	-3.6	-6.2	1.4	68.8	3.7	8.9	4.7
27	Basic metals	34.1	2.6	6.2	1.2	-3.1	6.9	41.0	-0.3	-3.0	3.4	1.2	1.3	42.3	0.2	19.0	0.4
28	Fabricated metals (excl. machinery)	73.1	6.0	2.4	-4.6	-2.7	1.1	74.2	3.7	-1.0	2.9	1.1	6.7	80.9	0.5	0.6	-1.2
29	Machinery not elsewhere classified	99.9	-1.7	2.2	-1.1	-5.1	-5.7	94.2	0.4	3.0	2.8	3.3	9.5	103.7	0.5	3.7	5.3
30	Office machinery and computers	269.0	-62.8	5.5	20.6	-49.9	-86.6	182.4	21.9	52.4	2.1	21.8	98.2	280.6	-39.2	-27.0	-45.5
31	Other electrical equipment	106.0	-5.9	-9.0	-1.7	-3.2	-19.8	86.2	1.4	1.1	5.6	-4.7	3.4	89.6	17.6	-9.6	-4.4
32	Communication equipment	134.9	-19.8	-24.3	0.4	-21.3	-65.0	69.9	-0.8	1.5	1.2	0.5	2.4	72.3	3.5	-1.2	8.8
33	Medical and optical instruments	210.3	-5.3	-5.4	2.0	-10.4	-19.1	191.2	-4.9	-10.5	-2.3	-5.5	-23.2	168.0	15.2	-8.2	31.1
34	Motor vehicles	29.3	2.4	1.0	-3.0	4.9	5.3	34.6	-1.1	6.1	3.2	5.8	14.0	48.6	-0.7	-2.0	-0.8
35	Other transport equipment	49.6	-1.3	-4.8	3.1	-5.3	-8.3	41.3	3.8	-2.6	-7.4	0.5	-5.7	35.6	0.5	-1.6	16.4
36-37, 23	Other manufacturing	83.7	2.3	8.4	-4.6	-5.4	0.7	84.4	-12.9	6.6	-4.2	-9.8	-20.3	64.1	11.9	25.1	-21.1
40	Electricity and gas supply	184.4	-13.2	13.9	-18.4	22.8	5.1	189.5	13.0	-0.6	11.2	-14.2	9.4	198.9	-1.3	43.8	-16.2
10-40	All industries	2931.9	-128.8	37.4	-43.8	-50.2	-185.4	2746.5	60.8	145.9	-11.2	38.4	233.9	2980.4	-27.0	-8.9	-3.0
10-37	Transportable goods industries	2747.5	-115.6	23.5	-25.4	-73.0	-190.5	2557.0	47.8	146.5	-22.4	52.6	224.5	2781.5	-25.7	-52.7	13.2
15-37	Manufacturing industries	2719.9	-115.1	21.8	-27.9	-70.7	-191.9	2528.0	59.9	133.4	-29.5	56.0	219.8	2747.8	-23.2	-63.6	1.2

* Preliminary Estimates

¹ Revised due to 2003 Census of Industrial Production (provisional figures)

Table 3 Stocks of Finished Goods held in Industry (€million)

NACE Code	Description	2003					2004					2005					
		2003 Opening CIP Level	Q1 ¹	Q2 ¹	Q3 ¹	Q4 ¹	Year ¹	2003 Closing CIP Level	Q1	Q2	Q3	Q4	Year	2004 Closing Level	Q1	Q2	Q3*
10-14	Mining and quarrying	53.5	-7.3	-2.0	24.3	-1.4	13.6	67.1	-2.3	12.3	3.5	-3.3	10.2	77.3	-2.4	-1.5	11.1
	Manufacturing:																
15-16	Food products, beverages and tobacco	702.2	18.0	2.4	-32.2	-10.5	-22.3	679.9	-73.6	35.8	-2.7	22.7	-17.8	662.1	-54.6	39.3	-10.8
17	Textiles	35.8	-3.9	-1.6	0.7	-1.9	-6.7	29.1	-2.2	-0.6	-0.9	-0.5	-4.2	24.9	-1.2	0.5	0.9
18	Wearing apparel	48.4	-9.5	-1.0	4.4	5.7	-0.4	48.0	-4.5	-3.8	-3.7	7.6	-4.4	43.6	-7.0	-1.8	-0.6
19	Leather products	7.8	-1.1	-0.5	-1.6	0.4	-2.8	5.0	0.1	0.3	-0.5	-0.3	-0.4	4.6	0.3	0.0	0.3
20	Wood and wood products	50.3	3.2	-2.8	-2.8	1.6	-0.8	49.5	-0.5	1.2	2.0	0.0	2.7	52.2	2.9	-0.3	-3.2
21	Paper and paper products	19.1	2.4	-0.5	-1.0	1.4	2.3	21.4	-0.2	1.4	-0.5	0.5	1.2	22.6	1.0	0.5	-0.6
22	Publishing and printing	140.8	-18.6	-42.1	134.2	-117.8	-44.3	96.5	-30.8	0.8	29.1	-46.5	-47.4	49.1	-14.2	20.0	28.6
24	Chemical products	617.6	70.4	33.5	-46.8	72.7	129.8	747.4	-122.2	54.6	-6.4	-3.1	-77.1	670.3	38.7	12.5	-22.1
25	Rubber and plastic products	49.4	3.5	-4.5	-2.3	9.8	6.5	55.9	-4.4	-4.4	3.5	3.7	-1.6	54.3	3.5	-3.4	-0.6
26	Other non-metallic mineral products	63.7	3.1	3.9	-8.6	1.8	0.2	63.9	4.7	9.5	-6.4	-3.7	4.1	68.0	4.0	-2.7	1.9
27	Basic metals	9.6	-2.4	0.6	-1.9	0.4	-3.3	6.3	-0.2	0.0	0.4	0.9	1.1	7.4	0.4	1.2	2.1
28	Fabricated metals (excl. machinery)	29.6	-0.7	0.9	-2.6	-0.8	-3.2	26.4	0.7	-0.4	0.8	0.8	1.9	28.3	-0.2	0.9	-0.5
29	Machinery not elsewhere classified	62.5	-3.8	1.8	-5.8	6.4	-1.4	61.1	2.6	-0.4	0.2	4.3	6.7	67.8	-5.9	14.3	-0.4
30	Office machinery and computers	131.7	65.1	-25.2	-31.8	38.3	46.4	178.1	-53.9	14.6	-8.8	-7.2	-55.3	122.8	-1.2	13.5	25.7
31	Other electrical equipment	87.3	1.1	-3.5	1.1	0.7	-0.6	86.7	8.9	3.7	3.5	11.5	27.6	114.3	-2.6	7.1	2.2
32	Communication equipment	42.8	5.1	6.2	-16.5	-5.0	-10.2	32.6	3.4	7.4	-1.4	-2.0	7.4	40.0	-0.4	-0.6	-4.8
33	Medical and optical instruments	146.7	-2.1	14.3	8.2	-25.6	-5.2	141.5	17.3	11.0	-18.5	-4.4	5.4	146.9	12.3	3.2	28.3
34	Motor vehicles	21.0	5.6	-0.5	-0.6	3.0	7.5	28.5	-6.1	5.8	-4.8	8.9	3.8	32.3	2.3	2.0	-2.0
35	Other transport equipment	3.5	-0.5	0.4	-0.1	0.0	-0.2	3.3	-0.4	-0.6	0.2	0.1	-0.7	2.6	-0.6	-0.5	-0.4
36-37, 23	Other manufacturing	85.0	3.1	2.3	2.7	4.2	12.3	97.3	29.9	1.3	9.9	9.4	50.5	147.8	19.6	1.4	-12.3
40	Electricity and gas supply	3.9	0.3	-0.9	-0.7	1.1	-0.2	3.7	-1.1	1.5	0.7	0.0	1.1	4.8	0.0	-1.2	1.4
10-40	All industries	2412.2	131.0	-18.8	20.3	-15.5	117.0	2529.2	-234.8	151.0	-0.8	-0.6	-85.2	2444.0	-5.3	104.4	44.2
10-37	Transportable goods industries	2408.3	130.7	-17.9	21.0	-16.6	117.2	2525.5	-233.7	149.5	-1.5	-0.6	-86.3	2439.2	-5.3	105.6	42.8
15-37	Manufacturing industries	2354.8	138.0	-15.9	-3.3	-15.2	103.6	2458.4	-231.4	137.2	-5.0	2.7	-96.5	2361.9	-2.9	107.1	31.7

* Preliminary Estimates

¹Revised due to 2003 Census of Industrial Production (provisional figures)

Table 4 Stocks of Work-in-Progress Goods held in Industry (€million)

NACE Code	Description	2003 Opening CIP Level	2003					2003 Closing CIP Level	2004					2004 Closing Level	2005		
			Q1 ¹	Q2 ¹	Q3 ¹	Q4 ¹	Year ¹		Q1	Q2	Q3	Q4	Year		Q1	Q2	Q3*
10-14	Mining and quarrying Manufacturing:	10.6	5.7	-0.9	-1.3	-9.1	-5.6	5.0	0.0	-0.4	1.2	-0.6	0.2	5.2	-0.1	3.9	2.6
15-16	Food products, beverages and tobacco	190.1	3.2	18.2	45.8	3.1	70.3	260.4	-13.3	-6.4	40.8	-39.0	-17.9	242.5	95.5	-4.2	18.0
17	Textiles	12.3	1.1	-0.4	-0.9	-0.2	-0.4	11.9	1.1	0.0	0.0	-1.2	-0.1	11.8	1.0	0.5	-1.7
18	Wearing apparel	11.4	-0.7	0.9	-0.3	-2.6	-2.7	8.7	2.2	-1.5	-3.2	0.2	-2.3	6.4	0.9	-0.6	-2.9
19	Leather products	1.0	0.1	-0.1	1.4	1.5	2.9	3.9	0.0	-0.1	0.1	-0.1	-0.1	3.8	0.0	0.0	0.1
20	Wood and wood products	8.1	1.4	-0.2	-0.6	2.0	2.6	10.7	3.4	0.7	-1.2	1.3	4.2	14.9	-0.2	-0.1	0.7
21	Paper and paper products	6.6	-0.5	-0.2	0.3	-0.2	-0.6	6.0	0.5	-0.6	-0.9	0.0	-1.0	5.0	-0.1	-0.5	0.7
22	Publishing and printing	13.5	0.5	-0.6	0.7	-2.5	-1.9	11.6	2.2	-0.9	0.1	-0.6	0.8	12.4	1.2	-1.0	0.3
24	Chemical products	898.6	79.2	232.1	-15.8	-124.8	170.7	1069.3	172.7	-29.4	-85.3	-77.0	-19.0	1050.3	119.6	234.6	-370.7
25	Rubber and plastic products	13.4	0.7	0.1	-1.2	-0.3	-0.7	12.7	0.5	0.6	0.5	-0.8	0.8	13.5	-0.8	-0.9	0.1
26	Other non-metallic mineral products	30.6	3.3	3.7	0.6	0.8	8.4	39.0	1.0	2.2	0.0	-3.6	-0.4	38.6	4.3	-1.2	-2.2
27	Basic metals	7.6	-1.1	-0.2	-0.2	-0.6	-2.1	5.5	-0.1	1.1	-0.3	-0.5	0.2	5.7	1.9	2.7	-1.3
28	Fabricated metals (excl. machinery)	66.6	8.8	4.6	5.1	-12.3	6.2	72.8	4.6	16.1	7.2	0.2	28.1	100.9	7.3	1.1	8.8
29	Machinery not elsewhere classified	48.7	8.2	-6.3	-2.7	-4.4	-5.2	43.5	16.4	-3.9	1.4	-4.3	9.6	53.1	5.8	2.1	-2.4
30	Office machinery and computers	188.5	39.0	-54.4	-36.4	33.9	-17.9	170.6	-35.8	-4.2	-1.8	-35.3	-77.1	93.5	46.6	5.8	53.8
31	Other electrical equipment	120.1	-0.7	2.2	-4.2	3.7	1.0	121.1	59.7	-31.5	2.6	-4.8	26.0	147.1	4.4	-6.6	10.8
32	Communication equipment	104.1	3.0	-3.3	1.7	-0.5	0.9	105.0	18.4	122.6	-10.3	-19.0	111.7	216.7	-14.7	6.1	-16.4
33	Medical and optical instruments	93.3	3.1	8.1	-9.5	110.2	111.9	205.2	-21.3	-28.4	22.6	-29.2	-56.3	148.9	-4.9	-16.8	-14.8
34	Motor vehicles	9.9	-0.8	0.2	-1.4	1.5	-0.5	9.4	-0.9	3.1	2.1	-1.4	2.9	12.3	-2.1	2.4	0.3
35	Other transport equipment	16.2	-2.4	-0.2	-1.4	0.2	-3.8	12.4	1.7	0.5	2.9	-1.6	3.5	15.9	0.5	2.7	-3.3
36-37, 23	Other manufacturing	97.4	-35.6	0.8	-1.8	-1.0	-37.6	59.8	-5.8	-7.2	1.6	-3.8	-15.2	44.6	1.0	-1.6	-16.3
40	Electricity and gas supply	0.4	0.0	0.0	0.0	0.0	0.0	0.4	0.0	0.0	0.0	0.0	0.0	0.4	0.1	0.1	0.0
10-40	All industries	1949.0	115.5	204.1	-22.1	-1.6	295.9	2244.9	207.2	32.4	-19.9	-221.1	-1.4	2243.5	267.2	228.5	-335.8
10-37	Transportable goods industries	1948.6	115.5	204.1	-22.1	-1.6	295.9	2244.5	207.2	32.4	-19.9	-221.1	-1.4	2243.1	267.1	228.4	-335.8
15-37	Manufacturing industries	1938.0	109.8	205.0	-20.8	7.5	301.5	2239.5	207.2	32.8	-21.1	-220.5	-1.6	2237.9	267.2	224.5	-338.4

* Preliminary Estimates

¹Revised due to 2003 Census of Industrial Production (provisional figures)

Table 5 Stocks of Goods Purchased for Resale held in Industry (€million)

NACE Code	Description	2003						2004						2005			
		2003 Opening CIP Level	Q1 ¹	Q2 ¹	Q3 ¹	Q4 ¹	Year ¹	2003 Closing CIP Level	Q1	Q2	Q3	Q4	Year	2004 Closing Level	Q1	Q2	Q3*
10-14	Mining and quarrying	0.2	-0.2	0.0	0.1	0.1	0.0	0.2	0.0	0.0	0.0	0.1	0.1	0.3	0.0	0.0	0.0
	Manufacturing:																
15-16	Food products, beverages and tobacco	142.7	14.3	-49.4	16.9	23.7	5.5	148.2	-0.3	-12.1	19.5	-11.9	-4.8	143.4	17.1	-1.9	11.8
17	Textiles	8.9	2.2	-1.3	-0.9	-1.7	-1.7	7.2	0.2	0.1	0.3	-0.7	-0.1	7.1	0.0	1.6	-0.9
18	Wearing apparel	18.2	1.4	1.3	-4.6	1.5	-0.4	17.8	0.3	3.4	2.8	4.1	10.6	28.4	7.1	-3.6	2.4
19	Leather products	2.3	-0.2	0.4	-0.3	0.2	0.1	2.4	-0.1	-0.2	-0.3	1.7	1.1	3.5	0.1	0.0	0.5
20	Wood and wood products	4.6	-0.6	0.0	0.3	0.4	0.1	4.7	0.4	0.1	1.9	0.7	3.1	7.8	1.6	1.2	2.5
21	Paper and paper products	3.2	0.1	0.2	0.3	-0.2	0.4	3.6	-0.1	0.8	0.2	0.0	0.9	4.5	0.8	-0.1	-0.2
22	Publishing and printing	2.9	1.0	0.4	-0.8	0.5	1.1	4.0	-1.5	1.3	-0.1	1.2	0.9	4.9	-1.6	0.3	0.5
24	Chemical products	22.8	-0.6	4.4	-1.0	-4.2	-1.4	21.4	4.2	2.5	-8.4	5.1	3.4	24.8	2.9	12.3	-0.4
25	Rubber and plastic products	8.1	-1.7	0.4	0.9	0.2	-0.2	7.9	1.7	-0.5	0.4	-0.6	1.0	8.9	1.7	-1.2	0.1
26	Other non-metallic mineral products	17.1	3.6	0.3	-3.4	-0.2	0.3	17.4	-1.6	1.0	-0.1	5.7	5.0	22.4	-7.2	2.3	2.9
27	Basic metals	2.7	0.5	-1.0	0.6	0.4	0.5	3.2	-0.2	1.1	-0.4	0.3	0.8	4.0	-0.3	0.1	-1.0
28	Fabricated metals (excl. machinery)	12.2	0.8	-0.9	0.7	-0.6	0.0	12.2	1.9	0.2	2.9	-1.1	3.9	16.1	-0.8	0.9	-1.6
29	Machinery not elsewhere classified	3.5	-3.2	1.2	0.9	2.4	1.3	4.8	-0.5	0.7	2.1	-0.5	1.8	6.6	0.8	4.9	0.2
30	Office machinery and computers	1.9	-4.6	5.2	0.7	-0.9	0.4	2.3	1.4	-1.0	1.4	-2.7	-0.9	1.4	2.1	4.0	-1.6
31	Other electrical equipment	8.4	-2.7	2.4	3.2	-0.3	2.6	11.0	0.1	1.2	2.2	-0.9	2.6	13.6	1.4	-0.6	-2.0
32	Communication equipment	4.4	-1.8	-1.2	3.0	-0.5	-0.5	3.9	1.5	0.1	2.6	-1.3	2.9	6.8	0.0	7.0	0.6
33	Medical and optical instruments	7.7	36.2	38.5	24.2	49.0	147.9	155.6	-2.2	0.3	-1.2	0.3	-2.8	152.8	-0.8	0.2	0.9
34	Motor vehicles	4.5	-1.2	1.0	-0.7	0.9	0.0	4.5	-0.4	0.2	0.2	0.4	0.4	4.9	0.1	-0.7	-0.2
35	Other transport equipment	0.7	0.0	-0.2	-0.4	1.2	0.6	1.3	-0.3	0.0	0.1	0.0	-0.2	1.1	-0.1	-0.5	-0.4
36-37, 23	Other manufacturing	8.2	0.2	-0.2	0.8	-0.7	0.1	8.3	-7.0	2.2	-2.1	-2.0	-8.9	-0.6	-4.6	0.3	5.3
40	Electricity and gas supply	12.0	-1.3	-0.6	0.3	0.3	-1.3	10.7	-0.1	0.0	-10.1	0.0	-10.2	0.5	0.0	0.0	0.1
10-40	All industries	297.2	42.2	0.9	40.8	71.5	155.4	452.6	-2.6	1.4	13.9	-2.1	10.6	463.2	20.3	26.5	19.5
10-37	Transportable goods industries	285.2	43.5	1.5	40.5	71.2	156.7	441.9	-2.5	1.4	24.0	-2.1	20.8	462.7	20.3	26.5	19.4
15-37	Manufacturing industries	285.0	43.7	1.5	40.4	71.1	156.7	441.7	-2.5	1.4	24.0	-2.2	20.7	462.4	20.3	26.5	19.4

* Preliminary Estimates

¹Revised due to 2003 Census of Industrial Production (provisional figures)

Background Notes

Introduction This Release details quarterly changes in stocks of goods held in the Mining, Manufacturing, and Energy sectors. The series are derived from a quarterly accounts inquiry to industrial enterprises with 20 or more persons engaged. This inquiry was initiated to meet national and EU requirements for quarterly economic variables, and is conducted under the Statistics (Business Accounts) Order, 2001, made under the Statistics Act, 1993.

The survey results, which cover all companies with 20+ employees, are grossed using the latest available CIP to represent levels of stocks for all industrial enterprises with 3+ persons engaged, and are shown at current values (seasonally unadjusted).

The series are short-term indicators of trends, and are subject to revision when the annual Census of Industrial Production (CIP) results become available.

Scope The survey of approximately 2,000 enterprises covers all enterprises with 20+ persons engaged in the Mining, Manufacturing, and Energy sectors.

The activity classification used in this Statistical Release is the NACE Rev. 1.1 classification.

Methodology Estimates are made for non-responding enterprises, and for those enterprises where the total stock level returned is zero. The *opening* stock level for each such enterprise in the current quarter is made equal to the closing stock level for that enterprise in the previous quarter. To estimate the *closing* stock level for the enterprise in the current quarter, the sample is classified into relatively homogeneous cells defined by NACE division and employment size, and the cell ratio closing stocks to opening stocks (calculated from the aggregated respondent values in the non-respondent's cell) is applied to the opening stock level for the enterprise. The stock change is derived as the closing stock level minus the opening stock level.

To derive estimates inclusive of those enterprises having 3 to 19 persons engaged, the sample results are grossed, by NACE division, using grossing ratios from the latest available CIP.

Definitions Stocks are valued (excluding VAT) on the accounting basis used by the enterprise. The stocks covered relate to goods actually held by the enterprise on its premises. Stock changes are calculated by subtracting the value of stocks at the beginning of the quarter from the value at the end of the quarter.

An enterprise is defined as the smallest combination of legal units that is an organisational unit producing goods or services, which benefits from a certain degree of autonomy in decision making, especially for the allocation of its current resources (e.g. company, partnership, individual proprietorship, etc.). An enterprise may be a sole legal unit.

Other The figures provided in this Release are short-term indicators only. They are based on quarterly information supplied by enterprises, many of whom do not maintain sub-annual accounting systems. The annual Census of Industrial Production, which utilises financial accounts data, should be considered as the definitive reference for stocks information.

Related series, on quarterly acquisitions and disposals of Capital Assets in Industry, are published in a separate Statistical Release.

NACE divisions 15 and 16 have now been combined for confidentiality reasons.