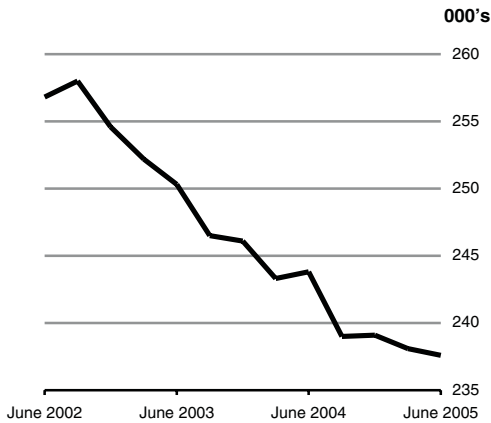




**Employment All Industries
(seasonally adjusted)**



Industrial Employment

March 2005 (Final)
June 2005 (Preliminary Estimates)

	All Industries	
	Seasonally Unadjusted	Seasonally Adjusted
June 2004	243,500	243,800
March 2005	236,900	238,100
June 2005	237,400	237,600
Quarterly change	+500	-500
Annual change	-6,100	-6,200

Industrial employment down by 6,100 in year to June 2005

Industrial employment was 237,400 in June 2005, a decrease of 6,100 from June 2004 (*see Table 2*).

Between March 2005 and June 2005 there was a seasonally adjusted decrease of 500 in industrial employment.

For more information contact Mary Murphy at (021) 453 5094 or Majella Lysaght at (021) 453 5513.

Published by the Central Statistics Office, Ireland.

Ardee Road
Dublin 6
Ireland

Skehard Road
Cork
Ireland

LoCall: 1890 313 414

Tel: +353-1 498 4000
Fax: +353-1 498 4229

Tel: +353-21 453 5000
Fax: +353-21 453 5555

Both offices may be contacted through any of these telephone numbers.

CSO on the Web: www.cso.ie
and go to
Labour Market and Earnings: Earnings

Director General: Donal Garvey

Enquiries:

Quarterly Statistics
Queries and Sales

Quarterly Section, ext 5505
Information Section, ext 5032
information@cso.ie

© Central Statistics Office
The contents of this release may be quoted provided the source is given clearly and accurately. Reproduction for own or internal use is permitted.

Table 1 Summary of Persons Engaged in Manufacturing, Transportable Goods and All Industries ('000)¹

Period	Manufacturing Industries		Transportable Goods Industries		All Industries		
	Unadjusted for Seasonality	Seasonally Adjusted ²	Unadjusted for Seasonality	Seasonally Adjusted ²	Unadjusted for Seasonality	Seasonally Adjusted ²	
1999	March	237.2	239.2	242.2	244.4	254.0	256.0
	June	238.4	238.4	244.1	244.1	255.9	255.6
	September	240.0	239.2	245.3	244.4	257.4	256.3
	December	242.7	241.8	247.9	247.1	260.6	259.8
	Average	239.6		244.9		257.0	
2000	March	242.7	244.2	248.0	249.7	260.6	262.5
	June	250.4	250.7	256.2	256.5	268.8	269.0
	September	249.7	248.8	255.3	254.3	267.8	266.8
	December	251.7	251.0	257.1	256.4	269.4	268.7
	Average	248.6		254.2		266.6	
2001	March	253.2	254.7	258.5	260.1	270.2	271.8
	June	251.7	251.9	257.3	257.6	269.0	269.3
	September	252.1	251.4	258.2	257.2	271.4	270.3
	December	247.2	246.5	253.0	252.6	265.2	264.7
	Average	251.0		256.8		269.0	
2002	March	243.2	244.4	249.0	250.3	261.4	262.7
	June	238.1	238.3	244.0	244.2	256.5	256.8
	September	240.1	239.4	246.8	245.8	259.0	258.0
	December	235.9	235.4	242.9	242.4	255.1	254.6
	Average	239.3		245.7		258.0	
2003	March	231.7	232.9	238.6	239.8	251.0	252.2
	June	231.1	231.1	237.4	237.6	250.0	250.3
	September	228.8	228.2	235.1	234.2	247.4	246.5
	December	228.5	228.0	234.6	234.2	246.6	246.1
	Average	230.0		236.4		248.8	
2004	March	223.9	225.0	230.1	231.3	242.1	243.3
	June	225.1	225.3	231.4	231.9	243.5	243.8
	September	221.7	221.0	227.9	227.0	240.0	239.0
	December	222.1	221.7	227.8	227.4	239.5	239.1
	Average	223.2		229.3		241.3	
2005	March	219.4	220.5	225.3	226.4	236.9	238.1
	June*	219.7	219.9	225.6	226.1	237.4	237.6

¹ The data in this and subsequent tables relate to a week in the middle of each month

² Based on seasonal patterns up to September 2004

* Preliminary estimates

Table 2 Total Persons Engaged by Industrial Sector ('000)

NACE Code	Industrial Sector	2001		2002				2003	
		Sep	Dec	Mar	Jun	Sep	Dec	Mar	Jun
10 – 14	Mining and quarrying	6.1	5.8	5.9	5.9	6.7	7.0	6.9	6.3
15 - 16	Manufacture of food products; beverages and tobacco	47.4	48.2	48.8	47.5	48.7	49.1	47.5	47.6
151 - 158	Manufacture of food products	40.5	41.4	40.5	39.7	41.0	41.2	39.9	39.9
159	Manufacture of beverages	6.0	6.0	7.5	6.9	6.9	7.0	6.7	6.8
16	Manufacture of tobacco products	0.9	0.8	0.8	0.8	0.8	0.8	0.8	0.8
17 - 18	Manufacture of textiles and textile products	8.7	8.3	7.9	7.8	7.8	7.6	7.3	7.2
17	Manufacture of textiles	5.5	5.3	4.9	4.8	4.8	4.7	4.5	4.5
18	Manufacture of wearing apparel; dressing and dyeing of fur	3.2	3.0	3.0	3.0	3.0	3.0	2.8	2.7
19	Manufacture of leather and leather products	0.7	0.6	0.5	0.5	0.5	0.5	0.5	0.5
20	Manufacture of wood and wood products	6.2	5.9	6.0	6.2	6.3	6.2	6.2	6.4
21 - 22	Manufacture of pulp, paper and paper products; publishing and printing	25.4	24.7	24.3	23.5	24.4	23.9	23.3	22.8
21	Manufacture of pulp, paper and paper products	5.2	5.2	5.1	5.0	5.6	5.1	4.9	4.8
22	Publishing, printing and reproduction of recorded media	20.2	19.5	19.2	18.5	18.8	18.9	18.4	18.0
24	Manufacture of chemicals, chemical products and man-made fibres	24.5	24.1	24.4	24.8	25.1	24.7	24.3	24.8
25	Manufacture of rubber and plastic products	9.6	9.5	9.2	9.3	9.5	9.6	9.4	9.7
26	Manufacture of other non-metallic mineral products	11.3	10.6	10.7	11.1	10.9	10.8	10.9	11.1
27 - 28	Manufacture of basic metals and fabricated metal products	16.2	15.8	15.5	15.3	16.1	15.3	14.9	14.9
27	Manufacture of basic metals	2.4	2.5	2.4	2.4	2.4	2.5	2.3	2.3
28	Manufacture of fabricated metal products, except machinery and equipment	13.8	13.4	13.1	12.9	13.7	12.8	12.6	12.7
29	Manufacture of machinery and equipment n.e.c.	14.4	14.0	13.7	13.4	13.0	12.5	12.3	12.2
30 - 33	Manufacture of optical and electrical equipment	67.1	64.4	62.0	58.4	56.8	54.8	54.8	53.7
30	Manufacture of office machinery and computers	21.7	20.1	19.4	18.1	16.9	16.2	16.3	15.7
31	Manufacture of electrical machinery and apparatus n.e.c.	11.9	11.6	10.5	10.2	9.8	9.6	9.2	8.9
32	Manufacture of radio, television and communication equipment and apparatus	13.6	13.0	12.2	9.7	9.4	8.8	9.5	8.5
33	Manufacture of medical, precision and optical instruments, watches and clocks	19.8	19.7	19.9	20.4	20.8	20.2	19.8	20.6
34 - 35	Manufacture of transport equipment	9.8	10.2	10.1	9.6	9.7	9.7	9.6	9.5
34	Manufacture of motor vehicles, trailers and semi-trailers	4.3	4.6	4.5	4.3	4.6	4.6	4.5	4.5
35	Manufacture of other transport equipment	5.5	5.6	5.6	5.3	5.1	5.1	5.1	4.9
36 - 37, 23	Manufacturing n.e.c. ; recycling; manufacture of coke, refined petroleum products and nuclear fuel	11.0	10.8	10.2	10.5	11.1	11.1	10.9	10.9
40 - 41	Electricity, gas and water supply	13.2	12.2	12.3	12.5	12.2	12.2	12.4	12.7
40	Electricity, gas, steam and hot water supply	10.0	10.0	10.0	10.1	10.1	10.0	10.1	9.9
41	Collection, purification and distribution of water	3.2	2.1	2.3	2.4	2.2	2.2	2.3	2.8
1 - 4	All industries	271.4	265.2	261.4	256.5	259.0	255.1	251.0	250.0
1 - 3	Transportable goods industries	258.2	253.1	249.0	244.0	246.8	242.9	238.6	237.4
15 - 37	Manufacturing industries	252.1	247.3	243.2	238.1	240.1	235.9	231.7	231.1

* Preliminary estimates

Table 2 Total Persons Engaged by Industrial Sector ('000) - continued

2003		2004				2005		Industrial Sector	NACE Code
Sep	Dec	Mar	Jun	Sep	Dec	Mar	Jun*		
6.3	6.2	6.3	6.4	6.2	5.7	5.9	5.9	Mining and quarrying	10 – 14
48.2	48.8	46.4	45.8	45.7	45.8	44.5	44.7	Manufacture of food products; beverages and tobacco	15 - 16
40.6	41.3	39.5	39.2	39.5	39.7	38.4	38.5	Manufacture of food products	151 - 158
6.8	6.7	6.3	6.0	5.6	5.5	5.5	5.7	Manufacture of beverages	159
0.8	0.8	0.6	0.6	0.6	0.6	0.5	0.5	Manufacture of tobacco products	16
6.5	6.4	6.1	5.9	5.3	5.2	5.1	5.0	Manufacture of textiles and textile products	17 - 18
3.9	3.8	3.7	3.7	3.3	3.2	3.2	3.1	Manufacture of textiles	17
2.5	2.5	2.4	2.2	2.0	2.0	1.9	1.9	Manufacture of wearing apparel; dressing and dyeing of fur	18
0.5	0.5	0.4	0.4	0.4	0.4	0.4	0.3	Manufacture of leather and leather products	19
6.2	6.2	6.1	6.4	6.3	6.4	6.6	6.8	Manufacture of wood and wood products	20
22.4	22.7	22.3	22.1	21.0	21.6	20.3	20.0	Manufacture of pulp, paper and paper products; publishing and printing	21 - 22
4.8	4.8	4.6	4.7	4.2	4.3	4.1	4.1	Manufacture of pulp, paper and paper products	21
17.6	17.8	17.7	17.5	16.8	17.3	16.2	15.9	Publishing, printing and reproduction of recorded media	22
24.2	23.6	23.0	23.9	23.7	23.2	23.0	23.0	Manufacture of chemicals, chemical products and man-made fibres	24
9.5	9.6	9.5	9.7	9.6	9.6	9.8	9.9	Manufacture of rubber and plastic products	25
11.0	10.8	10.9	11.4	11.3	10.9	11.0	11.0	Manufacture of other non-metallic mineral products	26
14.8	15.0	15.0	15.4	15.4	15.5	15.4	15.5	Manufacture of basic metals and fabricated metal products	27 - 28
2.2	2.1	2.1	2.2	2.2	2.3	2.3	2.3	Manufacture of basic metals	27
12.6	12.8	12.8	13.2	13.2	13.2	13.2	13.2	Manufacture of fabricated metal products, except machinery and equipment	28
12.0	11.7	11.7	11.7	11.4	10.9	10.7	10.7	Manufacture of machinery and equipment n.e.c.	29
53.3	52.9	52.5	52.3	52.3	53.1	53.5	53.5	Manufacture of optical and electrical equipment	30 - 33
15.5	15.9	16.0	15.7	15.7	16.2	16.2	15.4	Manufacture of office machinery and computers	30
8.7	8.7	8.7	8.4	8.3	8.2	8.1	7.9	Manufacture of electrical machinery and apparatus n.e.c.	31
7.8	7.0	7.1	7.3	7.3	7.1	7.3	7.7	Manufacture of radio, television and communication equipment and apparatus	32
21.3	21.4	20.8	21.0	21.1	21.5	21.9	22.5	Manufacture of medical, precision and optical instruments, watches and clocks	33
9.3	9.4	9.4	9.3	8.8	9.0	9.2	9.2	Manufacture of transport equipment	34 - 35
4.5	4.5	4.5	4.5	4.3	4.5	4.7	4.8	Manufacture of motor vehicles, trailers and semi-trailers	34
4.9	4.9	4.9	4.7	4.5	4.5	4.5	4.4	Manufacture of other transport equipment	35
10.9	11.1	10.6	10.8	10.5	10.5	10.1	10.0	Manufacturing n.e.c. ; recycling; manufacture of coke, refined petroleum products and nuclear fuel	36 - 37, 23
12.3	11.9	11.9	12.1	12.1	11.7	11.6	11.8	Electricity, gas and water supply	40 - 41
9.7	9.6	9.5	9.7	9.7	9.4	9.4	9.4	Electricity, gas, steam and hot water supply	40
2.7	2.3	2.4	2.4	2.4	2.4	2.2	2.4	Collection, purification and distribution of water	41
247.4	246.6	242.1	243.5	240.0	239.5	236.9	237.4	All industries	1 - 4
235.1	234.7	230.1	231.4	227.9	227.8	225.3	225.6	Transportable goods industries	1 - 3
228.8	228.5	223.9	225.1	221.7	222.1	219.4	219.7	Manufacturing industries	15 - 37

Table 3 Total Number of Employees¹ – June 2005 (Preliminary estimates) ('000)

NACE Code	Industrial Sector	Industrial Workers			Clerical & Managerial			Total Employees		
		Male	Female	Total	Male	Female	Total	Male	Female	Total
10 – 14	Mining and quarrying	4.3	0.0	4.4	1.1	0.5	1.5	5.4	0.5	5.9
15 - 16	Manufacture of food products; beverages and tobacco	23.3	7.6	30.9	7.8	5.4	13.2	31.1	13.0	44.1
151 - 158	Manufacture of food products	20.9	7.3	28.2	5.6	4.1	9.7	26.5	11.4	37.9
159	Manufacture of beverages	2.3	0.2	2.5	2.0	1.2	3.2	4.3	1.4	5.7
16	Manufacture of tobacco products	0.1	0.1	0.2	0.2	0.1	0.3	0.3	0.2	0.5
17 - 18	Manufacture of textiles and textile products	1.9	1.7	3.6	0.6	0.6	1.2	2.5	2.3	4.8
17	Manufacture of textiles	1.3	0.9	2.2	0.4	0.4	0.7	1.7	1.3	3.0
18	Manufacture of wearing apparel; dressing and dyeing of fur	0.6	0.8	1.4	0.2	0.2	0.4	0.9	1.0	1.8
19	Manufacture of leather and leather products	0.2	0.1	0.2	0.0	0.0	0.1	0.2	0.1	0.3
20	Manufacture of wood and wood products	5.0	0.2	5.2	0.9	0.6	1.5	5.9	0.7	6.7
21 - 22	Manufacture of pulp, paper and paper products; publishing and printing	6.6	2.4	9.0	5.8	4.7	10.5	12.4	7.1	19.5
21	Manufacture of pulp, paper and paper products	2.2	0.7	2.9	0.7	0.5	1.2	2.9	1.2	4.1
22	Publishing, printing and reproduction of recorded media	4.4	1.7	6.1	5.1	4.2	9.4	9.5	5.9	15.5
24	Manufacture of chemicals, chemical products and man-made fibres	8.9	3.5	12.3	5.5	5.2	10.7	14.4	8.6	23.0
25	Manufacture of rubber and plastic products	6.2	1.2	7.4	1.5	0.9	2.4	7.7	2.1	9.7
26	Manufacture of other non-metallic mineral products	7.2	0.6	7.8	2.0	1.1	3.1	9.2	1.7	10.9
27 - 28	Manufacture of basic metals and fabricated metal products	10.9	0.8	11.7	2.3	1.3	3.6	13.2	2.1	15.2
27	Manufacture of basic metals	1.6	0.2	1.7	0.4	0.2	0.6	2.0	0.3	2.3
28	Manufacture of fabricated metal products, except machinery and equipment	9.3	0.6	10.0	1.9	1.1	3.0	11.2	1.7	12.9
29	Manufacture of machinery and equipment n.e.c.	6.6	1.1	7.6	2.0	0.9	3.0	8.6	2.0	10.6
30 - 33	Manufacture of optical and electrical equipment	15.4	15.8	31.2	14.5	6.8	21.4	29.9	22.7	52.6
30	Manufacture of office machinery and computers	4.7	3.2	7.9	4.6	2.1	6.8	9.4	5.3	14.7
31	Manufacture of electrical machinery and apparatus n.e.c.	3.2	2.2	5.3	1.8	0.7	2.5	4.9	2.9	7.8
32	Manufacture of radio, television and communication equipment and apparatus	0.8	1.2	2.0	4.5	1.2	5.7	5.3	2.4	7.7
33	Manufacture of medical, precision and optical instruments, watches and clocks	6.6	9.3	16.0	3.6	2.7	6.4	10.3	12.0	22.3
34 - 35	Manufacture of transport equipment	6.3	1.2	7.4	1.2	0.5	1.7	7.4	1.7	9.1
34	Manufacture of motor vehicles, trailers and semi-trailers	2.9	1.0	4.0	0.5	0.3	0.8	3.4	1.3	4.7
35	Manufacture of other transport equipment	3.3	0.1	3.5	0.7	0.3	0.9	4.0	0.4	4.4
36 - 37, 23	Manufacturing n.e.c. ; recycling; manufacture of coke, refined petroleum products and nuclear fuel	5.8	1.5	7.4	1.5	1.0	2.5	7.3	2.6	9.9
40 - 41	Electricity, gas and water supply	5.9	0.1	6.0	3.6	2.2	5.8	9.5	2.3	11.8
40	Electricity, gas, steam and hot water supply	4.3	0.1	4.4	3.1	1.9	5.0	7.4	2.0	9.4
41	Collection, purification and distribution of water	1.6	0.0	1.6	0.5	0.3	0.8	2.1	0.3	2.4
1 - 4	All industries	114.4	37.7	152.2	50.4	31.6	82.0	164.8	69.4	234.2
1 - 3	Transportable goods industries	108.6	37.6	146.2	46.8	29.4	76.2	155.3	67.1	222.4
15 - 37	Manufacturing industries	104.2	37.6	141.8	45.7	29.0	74.7	149.9	66.5	216.5

¹Total Number of Employees differs from Total Persons Engaged (in Tables 1 and 2). Outside Piece Workers as well as Proprietors and Unpaid Family Members are not included as Employees in Table 3 but are included as Persons Engaged in Tables 1 and 2.

Background Notes

Scope and Coverage This inquiry covers industrial local units in the State with 3 or more persons engaged. Persons engaged in non-industrial activities conducted by parent undertakings at the same location or any own account workers engaged by them on a contract or fee basis are not included (see definitions below). These estimates are not directly comparable with the industrial employment estimates obtained from household surveys (such as the quarterly National Household Survey or periodic Census of Population) which include own account workers, cover very small establishments and are classified by sector on the basis of respondents' descriptions of the main activity conducted at their place of work.

Methodology **Employment:** Information for every industrial local unit known to be operating in the relevant reference week is used in compiling these estimates. The information is comprised of:

- A full breakdown of employment from completed quarterly inquiry questionnaires;
- Imputed employment estimates for non-respondent establishments based on trends in employment for respondents to the quarterly inquiry of a similar size and activity.

Changes from Previous Series:

Some methodological changes from the previous series to the new series have resulted in differences in estimates for retrospective periods. The methodological changes are:-

Sectoral Classification

The sectoral classification used in this series is NACE Rev 1 which is already being used for the Industrial Earnings & Hours Worked series, the Census of Industrial Production and the Monthly Production Index.

Employment Adjustment

In the previous series, adjustments were carried out at the level of the reporting unit in order to align employment estimates with those reported in the Census of Industrial Production. For the new series, this practice has been discontinued.

Definitions **Persons engaged:** All persons engaged in the industrial establishment as defined above are in this category. It includes:

- full-time and part-time employees;
- proprietors and family members not paid a definite wage or salary;
- persons on holidays or temporarily out sick.

Industrial workers: This employment category includes operatives, maintenance workers, storekeepers, packers, cleaners, basic supervisory staff and apprentices.

Managerial Workers: Administrative, managerial and technical workers are included in this category.

Clerical Workers: This employment category includes clerical and other office staff and sales representatives.