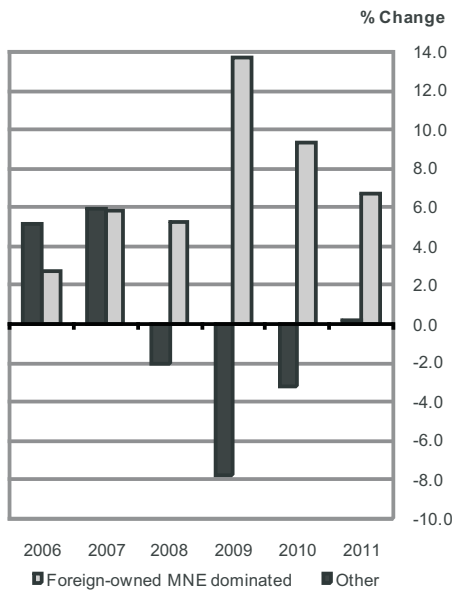




**GVA at constant 2010 factor cost for foreign-owned MNE dominated and other sectors**



## Gross Value Added for Foreign-owned Multinational Enterprises and Other Sectors Annual Results for 2011

**GVA at constant (2010) factor cost for sectors dominated by foreign-owned MNEs and other sectors**

	2010	2011	% Change
	Amount €	Amount €	
<b>Foreign-owned MNE dominated</b>	32,775	34,963	6.7
<b>Other</b>	107,763	107,994	0.2
<b>Total</b>	140,538	142,957	1.7

### Multinational sectors outperform other sectors

GVA at constant 2010 factor cost for sectors where foreign-owned multinational enterprises are dominant grew by 6.7 per cent between 2010 and 2011. The remainder of the economy grew by 0.2 per cent over the same period, resulting in an overall growth rate of 1.7 per cent. By 2011 the foreign-owned MNE sectors accounted for just over a quarter of total current GVA.

Between the 2007 peak and the 2010 trough for GVA at factor cost the foreign-owned MNE dominated sectors grew by a cumulative 30.9 per cent compared with a cumulative decline of 12.6 per cent for the remaining sectors. The overall economy experienced a cumulative decline of 4.6 per cent over this period.

Viewed in a longer term perspective (i.e. from 1995 onwards) the share of total GVA at current factor cost accounted for by foreign-owned MNE dominated sectors peaked at 26.5 per cent in 2002 and following a decline to 17.5 per cent in 2006 has since grown to its 2011 share of 25.3 per cent. During this period, 2003 (-1.5%) was the only year in which the real growth rate of the foreign-owned MNE dominated sectors was negative. By way of contrast the years 2008, 2009 and 2010 were the only years in which the remaining sectors experienced negative real GVA growth.

The composition of the sectors dominated by foreign-owned multinational enterprises is given overleaf in terms of constituent Nace Rev 2 codes and their corresponding shares in 2011. While the constant price compilations at previous year's prices were carried out at detailed sectoral level the figures at this level of disaggregation are not being made available at this stage. The total GVA at factor cost is consistent with Tables 3 and 4 of NIE 2011 <http://cso.ie/shorturl.aspx/135> For information on chain linking see pages v, xviii, 43-44 and 55 of NIE 2011.

The data tables contained in this report as well as data for earlier years can be downloaded from the StatBank database service on the CSO Website: <http://cso.ie/shorturl.aspx/137>.

Published by the Central Statistics Office, Ireland.

Ardee Road Skehard Road  
Dublin 6 Cork  
Ireland Ireland

LoCall: 1890 313 414 (ROI)  
0870 876 0256 (UK/NI)

Tel: +353 1 498 4000 Tel: +353 21 453 5000  
Fax: +353 1 498 4381 Fax: +353 21 453 5555

Both offices may be contacted through any of these telephone numbers.

CSO on the Web: [www.cso.ie](http://www.cso.ie)  
and go to:  
Economy: National Accounts

Director General: Pádraig Dalton

Enquiries:

National Accounts National Accounts, ext 4371  
nat\_acc@cso.ie  
General queries Information Section, ext 5021  
information@cso.ie

**Table 1 Gross Value Added at Current Factor Cost**

	€ million					
	2006	2007	2008	2009	2010	2011
Foreign-owned MNE dominated	27,134	31,781	31,118	32,524	32,775	36,252
Other	128,012	133,812	127,769	112,733	107,763	106,987
<b>Total</b>	<b>155,147</b>	<b>165,592</b>	<b>158,887</b>	<b>145,257</b>	<b>140,538</b>	<b>143,239</b>
<b>Annual Percentage Changes</b>						
Foreign-owned MNE dominated	1.4%	17.1%	-2.1%	4.5%	0.8%	10.6%
Other	9.3%	4.5%	-4.5%	-11.8%	-4.4%	-0.7%
<b>Total</b>	<b>7.8%</b>	<b>6.7%</b>	<b>-4.0%</b>	<b>-8.6%</b>	<b>-3.2%</b>	<b>1.9%</b>

**Table 2 Gross Value Added at Constant Factor Cost (Chain-linked annually and referenced to year 2010)**

	€ million					
	2006	2007	2008	2009	2010	2011
Foreign-owned MNE dominated	23,654	25,032	26,351	29,965	32,775	34,963
Other	116,373	123,332	120,778	111,361	107,763	107,994
<b>Total</b>	<b>139,077</b>	<b>147,356</b>	<b>146,380</b>	<b>141,120</b>	<b>140,538</b>	<b>142,957</b>
<b>Annual Percentage Changes</b>						
Foreign-owned MNE dominated	2.8%	5.8%	5.3%	13.7%	9.4%	6.7%
Other	5.2%	6.0%	-2.1%	-7.8%	-3.2%	0.2%
<b>Total</b>	<b>4.8%</b>	<b>6.0%</b>	<b>-0.7%</b>	<b>-3.6%</b>	<b>-0.4%</b>	<b>1.7%</b>

**Table 3 Composition of Foreign-owned multinational enterprise dominated sectors and Other sectors\***

Description	Nace code	Percentage of 2011 GVA at current factor cost
Chemicals and chemical products, basic pharmaceutical products and pharmaceutical preparations	20-21	10.1%
Software and communications sectors	58-63	10.2%
Other NACE sectors dominated by Foreign-owned MNEs ( <i>Reproduction of recorded media, Computer, electronic and optical products, Electrical equipment, Medical and dental instruments and supplies</i> )	18.2, 26, 27 and 32.5	5.0%
<b>Foreign-owned MNE dominated Total</b>		<b>25.3%</b>
<b>"Other" Sectors</b>		<b>74.7%</b>
The "Other" Sectors includes all Nace sectors excluding those listed as part of the Foreign-owned MNE dominated sectors above		

\* Foreign owned Multinational Enterprise (MNE) dominated sectors occur where MNE turnover on average exceeds 85% of the sector total.