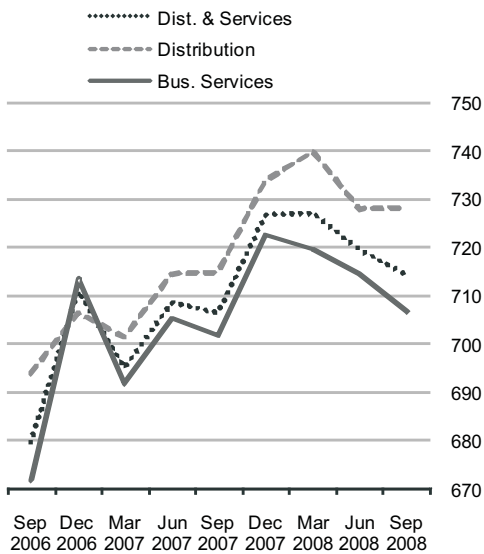




## Earnings in Distribution and Business Services

June 2008 Final Figures  
September 2008 First Estimates

### Average Weekly Earnings (€)



### Average Full-Time Weekly Earnings

	Sept 2007	Sept 2008	Annual Change
	€	€	%
<b>Distribution &amp; Business Services</b>	706.40	714.34	1.1
<b>Distribution</b>	714.71	728.02	1.9
<b>Business Services</b>	701.69	706.65	0.7

### Average weekly earnings up by 1.1% in September 2008

The average weekly earnings of full-time employees in distribution and business services were €714.34 in September 2008, compared with €706.40 in September 2007. This was an increase of 1.1% in the year. The figures refer to employees in enterprises with five or more persons engaged. *See Table 1 & graph.*

Average weekly earnings in the distribution sector were €728.02 in September 2008, compared with a September 2007 level of €714.71, an increase of 1.9% in the year. *See Table 1.*

In the business services sector, average weekly earnings were €706.65 in September 2008, compared with a September 2007 level of €701.69, an increase of 0.7% in the year. *See Table 1.*

The breakdown of earnings into the different sub-sectors shows:

- ◆ The highest average weekly earnings were recorded in the Post and Telecommunications sub-sector, with a level of €926.14 in September 2008.
- ◆ The lowest average weekly earnings were in the Accommodation and Catering sub-sector, at €474.17 in September 2008.

The Earnings in Distribution and Business Services release for December 2008, to be published in April 2009, will be the final release of this series. Earnings data for the Distribution and Business Services sectors will be published in future as part of the new quarterly Earnings, Hours and Employment Costs Survey (EHECS). This development is part of the CSO strategy to improve earnings statistics.

*For more information contact Joseph Keating at 021 453 5121 or Sean Hurley at 021 453 5242.*

Published by the Central Statistics Office, Ireland.

Ardee Road  
Dublin 6  
Ireland

Skehard Road  
Cork  
Ireland

LoCall: 1890 313 414 (ROI)  
0870 8760256 (UK/Nl)

Tel: +353 1 498 4000  
Fax: +353 1 498 4229

Tel: +353 21 453 5000  
Fax: +353 21 453 5555

Both offices may be contacted through any of these telephone numbers.

CSO on the Web: [www.cso.ie](http://www.cso.ie)  
and go to  
Labour Market & Earnings: Earnings

Director General: Gerard O'Hanlon

Enquiries:

Earnings Statistics  
Queries and Sales

QSI Section, ext 5242  
Information Section, ext 5021  
[information@cso.ie](mailto:information@cso.ie)

© Central Statistics Office  
The contents of this release may be quoted provided the source is given clearly and accurately. Reproduction for own or internal use is permitted.

**Table 1 Average Weekly Earnings for Full-time Employees in enterprises with 5 or more persons engaged -**

**Distribution and Business Services**

NACE Code	Sector	2006					2007					2008		
		March	June	Sept	Dec	Year	March	June	Sept	Dec	Year	March	June	Sept *
		€	€	€	€	€	€	€	€	€	€	€	€	€
	<b>Distribution &amp; Business Services:</b>	<b>664.35</b>	<b>673.61</b>	<b>679.73</b>	<b>710.44</b>	<b>682.03</b>	<b>695.31</b>	<b>708.47</b>	<b>706.40</b>	<b>726.63</b>	<b>709.20</b>	<b>727.01</b>	<b>719.43</b>	<b>714.34</b>
	<b>Distribution:</b>	<b>665.60</b>	<b>684.27</b>	<b>693.75</b>	<b>705.85</b>	<b>687.37</b>	<b>701.35</b>	<b>714.38</b>	<b>714.71</b>	<b>733.72</b>	<b>716.04</b>	<b>739.65</b>	<b>727.86</b>	<b>728.02</b>
50	Motor Trade	577.31	596.12	600.04	632.68	601.54	631.90	635.26	639.24	647.21	638.40	650.76	633.35	629.62
51	Wholesale Trade	683.27	699.35	706.27	724.16	703.26	713.83	715.97	699.08	717.72	711.65	724.68	736.73	733.88
52	Retail Trade	683.03	702.91	716.36	717.90	705.05	714.86	735.69	746.52	771.87	742.24	778.15	754.63	757.53
	<b>Business Services:</b>	<b>663.61</b>	<b>667.43</b>	<b>671.80</b>	<b>713.13</b>	<b>678.99</b>	<b>691.91</b>	<b>705.16</b>	<b>701.69</b>	<b>722.61</b>	<b>705.34</b>	<b>719.77</b>	<b>714.54</b>	<b>706.65</b>
55	Accommodation & Catering	426.27	427.99	433.11	437.25	431.16	430.00	444.38	449.06	461.93	446.34	447.17	458.35	474.17
60	Land Transport	664.80	673.46	674.71	709.72	680.67	705.99	720.35	713.20	705.21	711.19	757.48	743.47	724.86
61-63	Other Transport Activity	748.20	758.46	760.85	C **	C **	811.96	816.33	810.36	C **	C **	822.85	855.66	823.04
64	Post & Telecommunications	811.59	852.13	860.64	C **	C **	888.41	906.54	910.89	C **	C **	976.95	919.94	926.14
70-71	Real Estate,Renting of Machinery	808.52	806.60	843.40	863.02	830.39	835.35	859.70	861.34	867.60	856.00	854.39	844.05	838.53
72-73	Computing Activity, R & D	720.50	703.22	720.64	738.53	720.72	762.55	767.14	764.57	774.35	767.15	798.49	815.61	817.56
74	Other Business Activity	699.73	692.40	700.36	726.01	704.63	714.40	727.73	734.98	728.98	726.52	736.61	721.19	703.15

\* First Estimates

\*\* Suppressed for reasons of statistical confidentiality

**Table 2 Summary of Average Weekly Earnings in Distribution and Business Services**

	<b>Distribution &amp; Business Services</b>	<b>Distribution</b>	<b>Business Services</b>
	€	€	€
2000 Year	505.01	489.59	513.52
2001 Year	545.41	534.42	551.46
2002 Year	563.58	567.50	561.43
2003 Year	589.45	596.58	585.53
2004 Year	619.41	620.12	619.01
2005 Year	644.70	647.90	642.86
2006 Year	682.03	687.37	678.99
2007 Year	709.20	716.04	705.34
2000 1st quarter	487.38	471.61	495.99
2nd quarter	496.28	481.64	504.35
3rd quarter	506.42	497.57	511.41
4th quarter	529.98	507.51	542.32
2001 1st quarter	538.00	526.04	544.53
2nd quarter	538.29	534.80	540.20
3rd quarter	548.12	533.47	556.00
4th quarter	557.21	543.40	564.63
2002 1st quarter	551.29	550.69	551.62
2nd quarter	556.87	562.07	554.04
3rd quarter	560.99	567.17	557.59
4th quarter	585.17	590.06	582.48
2003 1st quarter	582.08	591.83	576.72
2nd quarter	583.63	592.98	578.54
3rd quarter	585.01	595.28	579.30
4th quarter	606.86	605.80	607.43
2004 1st quarter	611.04	612.76	610.07
2nd quarter	617.76	617.80	617.73
3rd quarter	617.68	621.12	615.76
4th quarter	631.16	628.81	632.49
2005 1st quarter	630.08	632.03	628.99
2nd quarter	638.69	640.77	637.55
3rd quarter	644.48	649.82	641.34
4th quarter	665.56	668.96	663.55
2006 1st quarter	664.35	665.60	663.61
2nd quarter	673.61	684.27	667.43
3rd quarter	679.73	693.75	671.80
4th quarter	710.44	705.85	713.13
2007 1st quarter	695.31	701.35	691.91
2nd quarter	708.47	714.38	705.16
3rd quarter	706.40	714.71	701.69
4th quarter	726.63	733.72	722.61
2008 1st quarter	727.01	739.65	719.77
2nd quarter	719.43	727.86	714.54
3rd quarter*	714.34	728.02	706.65

\* First Estimates

## Background Notes

**Introduction** This Release details average weekly earnings of full-time employees in the Distribution and Business Services sectors. The series are derived from quarterly inquiries to enterprises, conducted under the Statistics (Business Accounts) Orders, 2006, made under the Statistics Act 1993.

The numbers of persons engaged in the Distribution and Services sectors, as estimated by the Quarterly National Household Survey (QNHS), are shown in Table A in the Appendix. Early analysis showed that it would not be possible to derive reliable earnings estimates for part-time employees or for small enterprises with less than 5 persons engaged. These have been excluded from the current release.

The series, therefore, covers full-time employees in enterprises with 5 or more persons engaged. The survey collects details of the number of full-time employees (defined as persons working 30 or more hours per week) and their total wages. The number of hours worked was not sought, nor was any breakdown by gender or employment activity.

**Scope** The activity classification used is the NACE Rev. 1.1 classification. The survey relates to a week in the months of March, June, September and December. It covers a sample of enterprises in the Distribution sector (NACE divisions 50 to 52), and NACE divisions 55, 60 to 64, and 70 to 74 of the Business Services sector. The target sample size is approximately 25% of the total number of enterprises with 5 or more persons engaged.

**Methodology** Using the CSO Business Register, the sample in each quarter is classified into cells defined by NACE division and employment size. March 1998 was taken as the base period and average earnings per person per week were computed, from the survey returns, for each cell. These cell averages were then weighted by the corresponding estimated full-time employment to derive the average earnings at divisional and higher levels. The employment figures used for this weighting were the QNHS estimates for the December 1997 – February 1998 quarter, allocated to size classes using the Business Register.

For each subsequent quarter, a matched sample of enterprises making returns in both the current quarter and the previous quarter was used. The average weekly earnings in each cell of the matched sample for both quarters were computed. The quarter-on-quarter matched sample change in average weekly earnings in each cell was then applied to the average weekly earnings for the cell in the previous quarter, to produce the average weekly earnings for the cell in the current quarter. These cell averages were then weighted by QNHS-based full-time employment estimates for the current quarter to produce average earnings at divisional and higher levels.

Tables B and C in the Appendix show the number of full-time employees and the number of enterprises, respectively, covered by returns used to compile the average weekly earnings figures in each period since March 2006.

### **Definitions** **Employee**

An employee is defined as any person working in the enterprise who is paid a definite wage or salary. Full-time employees are employees who work 30 or more hours per week.

### **Earnings**

Earnings represent the gross amount (before the deduction of tax, PRSI, superannuation, etc.) payable to employees. Earnings include normal wages and salaries and overtime, taxable allowances, regular bonuses and commissions, as well as holiday pay and sick pay. Excluded from earnings are back-pay, redundancy pay, irregular bonuses (incl. annual bonuses), advances of pay, expenses, employers PRSI, and any earnings paid at irregular intervals.

### **Enterprise**

An enterprise is defined as the smallest legally independent business unit. It may be comprised of one or more local units or branches.

## Appendix

**Table A Quarterly National Household Survey (QNHS) Employment Estimates<sup>1</sup> for Distribution and Services**

NACE Code	Sector	Persons Engaged		Full-time Employees		Full-time Employees in Enterprises with 5+ Persons Engaged <sup>2</sup>	
		Q3 2007	Q3 2008	Q3 2007	Q3 2008	Q3 2007	Q3 2008
<b>Distribution &amp; Business Services:</b>		<b>760,600</b>	<b>757,800</b>	<b>468,900</b>	<b>480,900</b>	<b>368,500</b>	<b>378,200</b>
<b>Distribution:</b>		<b>309,500</b>	<b>308,300</b>	<b>178,100</b>	<b>181,700</b>	<b>133,400</b>	<b>136,100</b>
50	Motor Trade	46,500	47,800	30,900	33,500	22,100	23,900
51	Wholesale Trade	61,500	64,800	47,200	48,200	39,500	40,400
52	Retail Trade	201,500	195,700	100,000	100,000	71,800	71,800
<b>Business Services:</b>		<b>451,100</b>	<b>449,500</b>	<b>290,800</b>	<b>299,200</b>	<b>235,200</b>	<b>242,200</b>
55	Accommodation & Catering	130,000	133,000	73,700	77,900	56,300	59,500
60	Land Transport	52,700	52,200	27,500	28,700	22,100	23,100
61-63	Other Transport Activity	30,900	29,500	25,200	23,800	23,400	22,100
64	Post & Telecommunications	35,800	40,300	32,000	33,500	30,700	32,200
70-71	Real Estate, Renting of Machinery	21,600	19,900	12,300	11,800	6,800	6,600
72-73	Computing Activity, R & D	38,200	36,000	29,700	33,600	25,500	28,900
74	Other Business Activity	141,900	138,600	90,400	89,900	70,300	69,900

<sup>1</sup> QNHS employment estimates for period May - Jul

<sup>2</sup> QNHS estimates, adjusted using size class details from the CSO Business Register

**Table B The number of full-time employees covered by returns used in calculating the average weekly earnings**

NACE Code	Sector	2006				2007				2008		
		Mar.	Jun.	Sept.	Dec.	Mar.	Jun.	Sept.	Dec.	Mar.	Jun.	Sept.*
	<b>Distribution &amp; Business Services:</b>	<b>162,404</b>	<b>165,869</b>	<b>167,222</b>	<b>170,868</b>	<b>166,391</b>	<b>164,148</b>	<b>174,398</b>	<b>169,726</b>	<b>157,190</b>	<b>167,556</b>	<b>159,817</b>
	<b>Distribution:</b>	<b>53,526</b>	<b>57,105</b>	<b>53,998</b>	<b>55,598</b>	<b>57,515</b>	<b>55,153</b>	<b>59,107</b>	<b>57,697</b>	<b>54,679</b>	<b>57,217</b>	<b>53,924</b>
50	Motor Trade	5,267	5,527	5,287	4,795	4,929	5,080	5,627	5,437	5,790	5,648	5,041
51	Wholesale Trade	22,334	24,936	23,440	23,851	24,743	24,105	24,752	24,013	22,267	23,965	22,115
52	Retail Trade	25,925	26,642	25,271	26,952	27,843	25,968	28,728	28,247	26,622	27,604	26,768
	<b>Business Services:</b>	<b>108,878</b>	<b>108,764</b>	<b>113,224</b>	<b>115,270</b>	<b>108,876</b>	<b>108,995</b>	<b>115,291</b>	<b>112,029</b>	<b>102,511</b>	<b>110,339</b>	<b>105,893</b>
55	Accommodation & Catering	17,724	17,840	18,666	17,764	17,496	17,893	18,803	18,425	16,779	17,474	15,759
60	Land Transport	13,606	13,509	13,517	13,301	13,290	13,312	13,257	13,454	13,231	13,761	13,565
61-63	Other Transport activity	10,190	12,882	12,867	12,987	13,604	13,676	14,403	14,334	11,705	12,402	10,709
64	Post & Telecommunications	20,379	20,405	19,491	19,616	19,569	19,545	19,244	18,184	18,014	17,771	17,632
70-71	Real Estate, Renting of Machinery	3,823	3,833	4,378	3,421	2,841	2,733	3,423	3,646	3,394	3,658	3,607
72-73	Computing activity, R & D	10,235	10,448	11,628	12,146	10,461	10,094	10,587	9,873	9,251	12,188	12,380
74	Other Business activity	32,921	29,847	32,677	36,035	31,615	31,742	35,574	34,113	30,137	33,085	32,241

\* First Estimates

**Table C The number of enterprises covered by returns used in calculating the average weekly earnings**

NACE Code	Sector	2006				2007				2008		
		Mar.	Jun.	Sept.	Dec.	Mar.	Jun.	Sept.	Dec.	Mar.	Jun.	Sept.*
	<b>Distribution &amp; Business Services:</b>	<b>2,754</b>	<b>2,554</b>	<b>2,670</b>	<b>2,687</b>	<b>2,725</b>	<b>2,499</b>	<b>2,883</b>	<b>2,944</b>	<b>2,515</b>	<b>2,701</b>	<b>2,273</b>
	<b>Distribution:</b>	<b>1,210</b>	<b>1,101</b>	<b>1,140</b>	<b>1,201</b>	<b>1,221</b>	<b>1,061</b>	<b>1,234</b>	<b>1,268</b>	<b>1,168</b>	<b>1,140</b>	<b>976</b>
50	Motor Trade	242	215	204	196	202	159	198	218	199	188	159
51	Wholesale Trade	396	354	363	390	412	370	408	404	384	396	359
52	Retail Trade	572	532	573	615	607	532	628	646	585	556	458
	<b>Business Services:</b>	<b>1,544</b>	<b>1,453</b>	<b>1,530</b>	<b>1,486</b>	<b>1,504</b>	<b>1,438</b>	<b>1,649</b>	<b>1,676</b>	<b>1,347</b>	<b>1,561</b>	<b>1,297</b>
55	Accommodation & Catering	490	460	504	465	462	495	498	498	420	520	426
60	Land Transport	93	87	86	78	91	80	102	101	88	110	80
61-63	Other Transport activity	93	83	86	92	97	92	107	105	90	103	92
64	Post & Telecommunications	38	31	29	38	38	37	41	37	36	41	23
70-71	Real Estate, Renting of Machinery	96	91	99	99	104	84	117	129	94	103	85
72-73	Computing activity, R & D	163	151	153	168	156	135	165	163	135	156	158
74	Other Business activity	571	550	573	546	556	515	619	643	484	528	433

\* First Estimates