



Central Statistics Office
An Phríomh-Oifig Staidrimh

Income of Agricultural Households in Ireland

1994-1995
1999-2000
2004-2005

Published by the Stationery Office, Dublin, Ireland.

To be purchased from the:

Central Statistics Office, Information Section, Skehard Road, Cork,

Government Publications Sales Office, Sun Alliance House,
Molesworth Street, Dublin 2,

or through any bookseller.

Price €10.00

June 2008

© Government of Ireland 2008

Material compiled and presented by the
Central Statistics Office.

Reproduction is authorised, except for commercial
purposes, provided the source is acknowledged.

ISBN 1-4064-2054-8

Table of Contents

| | Page |
|---|-------------|
| Introduction | 5 |
| Definitions & Methodology | 7 |
| Household Budget Survey | 7 |
| Definition of Agricultural Households | 8 |
| Definition of Income | 10 |
| Grossing | 10 |
| Commentary on Results | 11 |
| References | 18 |
| Appendix 1 List of Tables | 19 |
| Appendix 2 Definition of Income | 51 |
| Appendix 3 Grossing Methodology | 55 |
| Appendix 4 Household Budget Survey Form | 57 |

Introduction

In 1990, the CSO conducted for the Statistical Office of the European Communities (Eurostat), a study of the total income for agricultural households in Ireland. This was an analysis of the 1987 Household Budget Survey (HBS) and gave the first estimates of the overall income situation of agricultural households. This income comprises not only income from independent activity in agriculture (farming), but also income from other gainful activities, from rental property, social transfers, and other sources. Data from that study were published in the Eurostat publication *Total Income of Agricultural Households: 1992 Report. (Theme 5 Series C)*.

Since the first analysis in 1990, there have been three subsequent HBS surveys – in 1994/1995, 1999/2000, and in 2004/2005 – which provide a basis for updating the previous analysis. The project is now known as the Income of the Agricultural Households Sector (IAHS) project. The purpose of this report is to establish estimates of the IAHS in Ireland for the time period from 1994 to 2005, using data from the farm household sub-sample of the HBS for the corresponding year, and thus to present an aggregate picture of the overall income situation of agricultural households. *A limitation of this study is the small number of sample agricultural households that are available in some household sub-categories - see note on sample size on page 11 of this report.*

The IAHS project has been developed to provide policy-makers with information additional to that coming from the longer-established official indicators of the income from agricultural activity. IAHS statistics allow the changing levels and composition of the income of agricultural households to be monitored, and for direct comparisons to be made with non-agricultural households.

Definitions were based on the Eurostat *Manual on the Total Income of Agricultural Households (Rev.1)*. This methodology manual was developed by Eurostat in collaboration with representatives of the relevant statistical authorities in Member States.

Over the last number of years, off-farm income sources are becoming increasingly important to the viability of many farm households. Off-farm employment has become more prevalent – the 2005 National Farm Survey (NFS) estimates the percentage of farms where the farmer and/or the spouse has an off-farm job at 55%. This figure has been increasing steadily, from 45% in 2001, 48% in 2002, 50% in 2003, and 52% in 2004. The NFS is conducted by Teagasc, the Agriculture and Food Development Authority, and forms the basis of the Farm Accountancy Data Network (FADN) in Ireland.

Definitions & Methodology

Household Budget Survey

The HBS is a survey of a representative random sample of all private households in the State. Surveys have been carried out periodically in Ireland since 1951.

It is a large-scale survey carried out by the CSO every 5 years, covering both urban and rural households. The main purpose of the survey is to determine, in detail, the current pattern of household expenditure in order to update the weighting basis for the Consumer Price Index. The HBS provides extremely detailed and useful information; in addition to expenditure data, extensive information is collected on all sources of household income, accommodation, use of appliances, the structure of the household, and the personal characteristics of the household members.

A total of 6,884 sample households participated in the survey in 2004-2005, 7,644 in 1999-2000 and 7,877 in 1994-1995, with the data being obtained through personal interview and the maintenance of records by the co-operating households.

In 1987, the practice of integrating farm households participating in the National Farm Survey (NFS) into the HBS commenced, and this has continued for each of the subsequent surveys.

For the purposes of the survey, a household was defined as:

“a single person or group of people who regularly reside together in the same accommodation and who share the same catering arrangements”

This definition of household, based on usual residence and catering arrangements, implies that members of the household need not necessarily be related by blood or marriage, or more importantly, in the context of this study, be financially or otherwise dependent on one another.

Some of the tables included in this report refer to the *Head of Household* and to the *Chief Economic Supporter*. The Head of Household is a person designated by the household itself. The Chief Economic Supporter is identified as the person with the highest income in the household, and may not always be the same as the Head of Household.

The use of consumer units is a means of bringing households of differing compositions to a common base to allow for comparison. This is done by attributing weights, or an equivalence scale, to various types of household member. The number of adult equivalents, or consumer units, in a household was obtained by applying the following global coefficients:

| | |
|---|-----|
| Head of household | 1.0 |
| Other member of household aged 14 or over | 0.7 |
| Children under 14 years of age | 0.5 |

Extreme caution must be exercised in interpreting income analyses derived from the HBS. The reliability of the results depends to a large extent on the accuracy, consistency, and completeness of the information provided by the respondents.

There is considerable evidence available to clearly indicate that income levels tend to be understated in household surveys. Furthermore, the level of understatement can vary significantly between different categories of household and between components of disposable income. The general understatement arises because of the understandable reluctance of people to give full details of their personal income to interviewers. Moreover, certain types of income are amenable to more accurate measurement than others. For example, in the HBS, wage and salary estimates (which were usually based on recent recorded earnings) and farm income (which was largely measured by the very comprehensive NFS) can be assumed to be more accurately based than other income components such as other self-employed income, investment and property income, etc.

Definition of Agricultural Households

In the Eurostat *Manual on the Total Income of Agricultural Households (Rev. 1)*, two fields of survey are identified, namely a *broad* field and a *narrow* field. The *broad* field corresponds to all households that engage in agricultural activity and has the following target definition:

Agricultural households, in the broad sense, are those that derive some income from independent activity in agriculture (other than income solely in kind). This income can arise from activity of the head of household or any other member.

For national purposes, the manual envisages the use of alternative target definitions. One such alternative is:

“all those households that operate an agricultural holding (to which minimum size criteria might be applied, such as that size which qualifies the holding for inclusion in the Farm Structure Survey)”

This alternative *broad* definition will be adopted for the purposes of this report; and the minimum size criterion will be all holdings of at least 1 hectare (this is in line with the minimum size criterion which qualifies the holding for inclusion in the CSO's Farm Structure Survey).

The target definition for the *narrow* field is limited to households where income from independent agricultural activity is the **main** source of income of the household's reference person, although some alternatives are acceptable.

In line with this approach, households corresponding to the *broad* field, and to three variants of the *narrow* field were separately identified within the HBS sample.

The three variants of the *narrow* field concept which were examined were:

Variation 1 – All households where income from independent agricultural activity accounts for 50% or more of the total income of the household.

Variation 2 – Households where the income from independent agricultural activity constitutes the main source of income (i.e. 50% or more) of the head of household. This is the manual’s target *narrow* definition. This specific category is seen as more stable than Variation 1, and also of more relevance to agricultural policy in certain instances, in that it concentrates on the income situation of the head of household, who would normally be the holder or farmer.

Variation 3 – All adults surveyed were required to indicate whether they were in the labour force, and, if they were, to describe their principal occupation. Households where the head of household classified himself/herself as an active “farmer” were included under Variation 3. This category was distinguished so that an alternative to a *narrow* definition based solely on income could be examined.

Table A below shows the number of sample households included in each of the four categories of farm households for the three survey years considered here.

| Year | Number of sample households | | | |
|-----------|-----------------------------|-------------------|-------------|-------------|
| | Broad Definition | Narrow Definition | | |
| | | Variation 1 | Variation 2 | Variation 3 |
| 1994-1995 | 870 | 427 | 667 | 756 |
| 1999-2000 | 755 | 269 | 513 | 593 |
| 2004-2005 | 786 | 227 | 495 | 565 |

Table A - Number of sample households covered

For each survey year, there were substantially more households in the Variation 3 category than in either Variations 1 or 2, indicating that there is a significant number of holdings in Ireland where farming is considered as the main occupation of the head of household, but is not the main source of household income.

Comparisons are drawn in this report between agricultural households and non-agricultural households. Non-agricultural households are all households that do not fall into the *broad* definition category.

The following is a summary of the four definitions of agricultural households that are used in this report.

| | |
|---------------------------|---|
| Broad | All households that operate an agricultural holding of at least 1 hectare. |
| Narrow - Variant 1 | All households where income from independent agricultural activity accounts for 50% or more of the total income of the household. |
| Narrow - Variant 2 | Households where the income from independent agricultural activity constitutes the main source of income (i.e. 50% or more) of the head of the household. |
| Narrow - Variant 3 | Households where the head of household classified himself/herself as an active farmer. |

Definition of Income

The IAHS uses net disposable income as a measure of the income situation of households. The data available from the HBS was examined to assess the extent to which the components of disposable income, as recommended in the manual, could be achieved.

Details of the various components of income are available in Appendix 2.

Grossing

Details of the grossing methodology used in this project can be found in Appendix 3. In grossing from the sample of households to the theoretical population of holdings, a preliminary simplifying assumption was made, namely; that there is a one to one relationship between the agricultural households participating in the survey and holdings as defined for the purposes of the Farm Structure Survey (FSS). In practice this does not hold in all cases since there are clearly instances where one holding supports more than one household and, conversely, where two or more holdings are controlled by one household. In Ireland, however, such cases would be in a very small minority and the net effect on the grossed estimates can be taken to be very slight.

Commentary on Results

The reference period for this particular study is from 1994 to 2005 and uses data from three separate Household Budget Surveys in the years 1994-1995, 1999-2000, and 2004-2005. Aggregate estimates of Disposable Household Income (and its components) for the broad field concept and the three variants of the narrow field concept of agricultural household are given in the tables in Appendix 1. In addition, details are provided on the sample size, the estimated number of households represented, the estimated number of persons residing in the households, and the derived number of consumer units in each category of household.

The number of agricultural households participating in the HBS for each survey was 794 in 2004-2005, 756 in 1999-2000, and 872 in 1994-1995. These are relatively small sample sizes and this should be taken into consideration in the interpretation of the results. In particular, where household types have been sub-categorised based on age and gender, the results for some categories are based on very small cell sizes. Sample sizes are included in all of the tables in this report.

It is important to note when interpreting these results, that in 2005, Ireland implemented an EU policy change of a coupled to a decoupled system. This meant that in 2005, Irish farmers received a once-off payment which included the carry-over of arrears from coupled direct payments for previous years.

Note also that the data in the HBS years 1994-1995 and 1999-2000 may have included instances where individual households recorded a negative disposable income. These instances could occur where households had paid an outstanding income tax liability and so the income tax paid in a single year exceeded the income earned. The number of such instances was very low, and is not considered to have influenced the results in any significant way.

The number of sample households for each of the four household definitions is summarised in Figure 1 below.

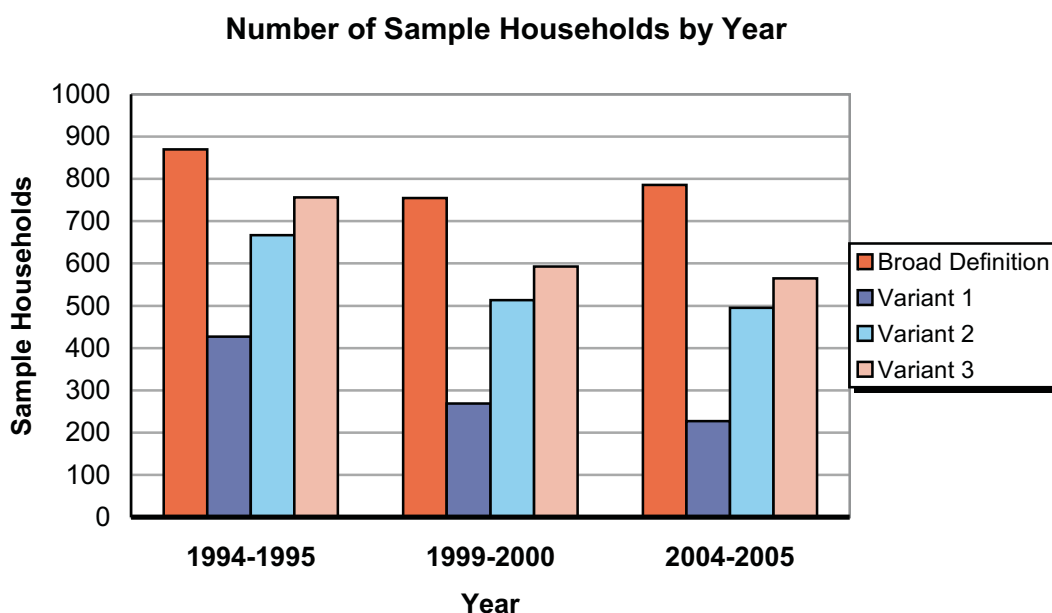


Figure 1 - Number of Sample Households for each of the four definitions by Year

The broad definition (all participating agricultural households with a holding of at least 1 hectare) included 786 sample households in 2004-2005, 755 in 1999-2000, and 870 in 1994-1995. The corresponding estimates for the number of agricultural households represented are 132,675 in 2004-2005, 140,156 in 1999-2000, and 151,930 in 1994-1995.

Because of the more restricted nature of the three variants of the narrow definition, coverage in these categories is smaller. Variant 2 included 495 sample households in 2004-2005, 513 in 1999-2000, and 667 in 1994-1995. The corresponding estimates for the number of agricultural households represented are 68,942 in 2004-2005, 80,020 in 1999-2000, and 110,289 in 1994-1995.

Figure 2 summarises the coverage of the three narrow definitions as a percentage of all agricultural holdings.

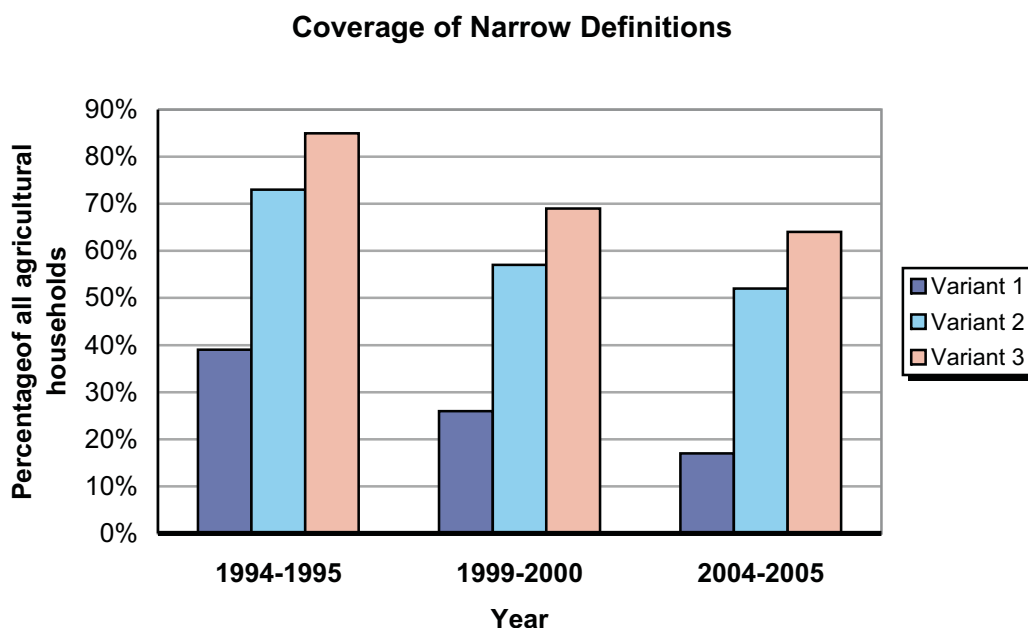


Figure 2 - Percentage of all agricultural households covered by the three variants of the narrow definition

The number of households where the main income of the household comes from agriculture (i.e. Variant 1), and the number of households where the main income of the head of household comes from agriculture (i.e. Variant 2) are considerably smaller than the overall number of agricultural households (i.e. the Broad definition). This indicates the existence of a large number of farming households where agriculture is of minor importance as a source of income. For each of the survey years, the coverage of Variant 2 is greater than that in Variant 1. Substantially more farms were included under Variant 3, which is based on the head of household's subjective assessment of his/her principal occupation.

In making comparisons between the various types of agricultural households, and between agricultural households and non-agricultural households, it is worth bearing in mind that household size (i.e. the number of persons per household) varies across all categories. In particular, the average household size for non-agricultural households is consistently smaller than that for agricultural households. In 2004-2005, the average household size for the Broad definition of agricultural households was 3.43 persons, whereas for non-agricultural households it was only 2.66 (almost 23% smaller). See Figure 3 below for a summary of average household size.

Average Household Size

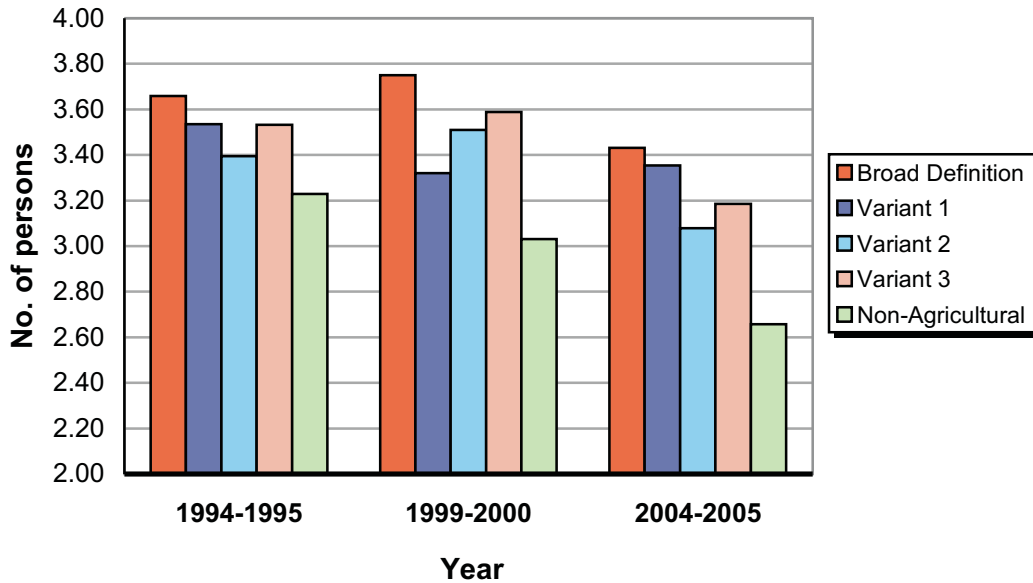


Figure 3 - Average household size by Year

Tables 1, 11 and 21 in Appendix 1 give details on aggregate income for agricultural and non-agricultural households. Figure 4 shows the estimate of aggregate income from agriculture. In the Broad definition of farm household, there was a sharp increase in the aggregate income from agriculture - €1,593.4m in 1999-2000 to €1,854.1m in 2004-2005 (an increase of over 16%). This increase was due mainly to the change in EU payments from a coupled to a decoupled system.

Note that in the Tables, non-agricultural households show some income from agricultural activity. This is due to the fact that the value of own garden/farm produce (valued at retail prices) is income in kind, and is one of the components that is used in the calculation of income from agriculture.

Aggregate Income from Agriculture

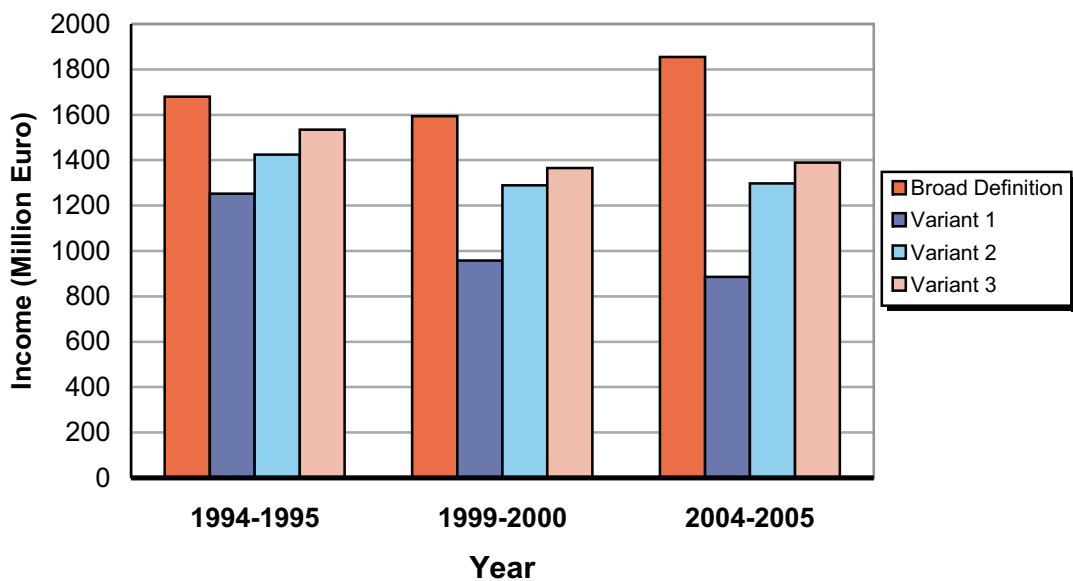


Figure 4 - Aggregate Income from Agriculture by Year

Tables 2, 12, and 22 in Appendix 1 give details on the average income per consumer unit (or per adult equivalent). This allows households of differing compositions to be directly compared. Figure 5 shows the average income per consumer unit for each of the four household definitions, as well as that for non-agricultural households. In 1994-1995 income for non-agricultural households is less than in all other categories, but in 2004-2005 it is greater.

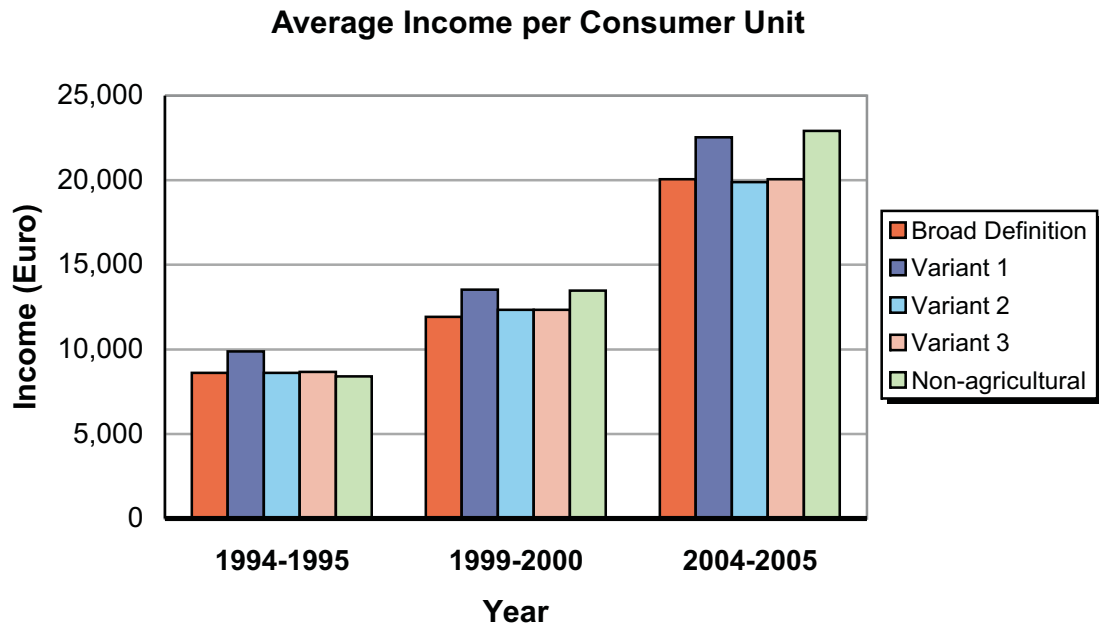


Figure 5 - Average income per Consumer Unit per Year

Tables 3, 13, and 23 in Appendix 1 give the average annual household income for the various categories of household. This is summarised in Figure 6 below.

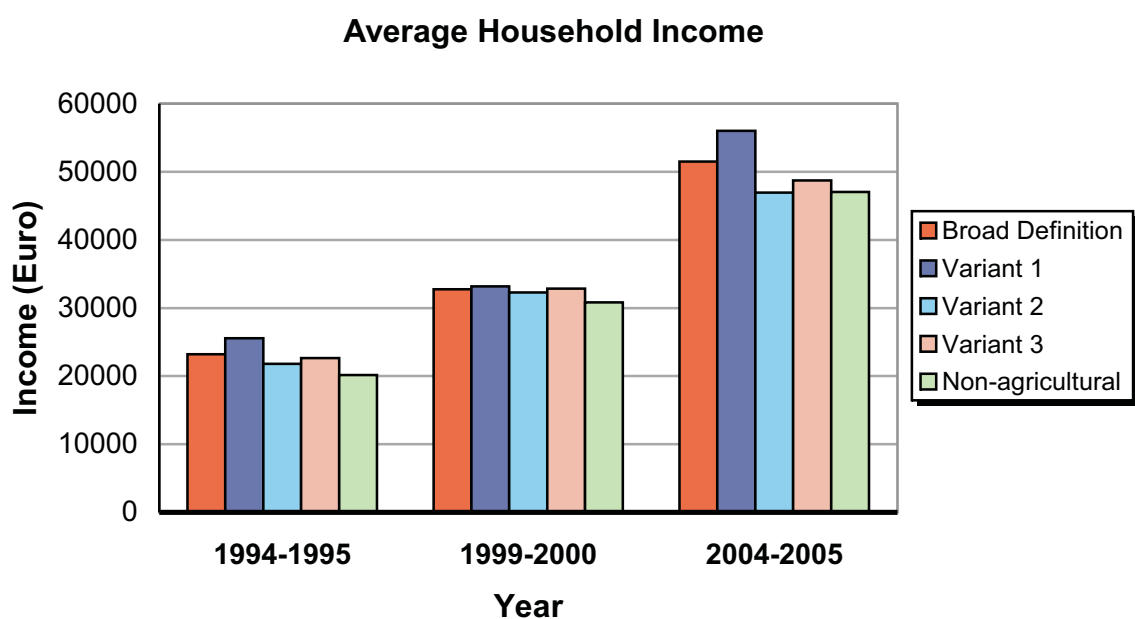


Figure 6 - Average Household Income by Year

For the period 2004-2005, the average net adjusted disposable income of farm households in the broad definition was €51,483 compared with an average of €47,032 for non-agricultural households. The average in the households where the head of household classified himself/herself as a “farmer”, i.e. Variant 3 of the narrow concept, was €48,738. The average for Variant 1 was higher, at €56,002, and Variant 2 had the lowest household income of the four categories of farm household at €46,959. One should bear in mind that household size varies across the various household categories and this accounts for some of the differences between the household incomes.

It can also be seen from Table 3 that for 2004-2005, the average net income from agricultural activity of Variant 1 households (at €39,520) was 2.8 times the average for the Broad definition (€13,974). Similarly, the average income from agricultural activity for Variant 2 households (at €18,829) was also substantially higher than the Broad average (35% higher). On the other hand, Variant 3 households had an average agricultural income of €16,405, which was only 17% above the Broad average. Figure 7 summarises this information for the three survey years. A similar trend across the various household definitions can be seen in the other survey periods, and when this information is coupled with that in the preceding paragraph, it is clear that the Variant 1 concept of household confines the coverage in Ireland to the larger and wealthier farms.

Average Household Income from Agricultural Activity

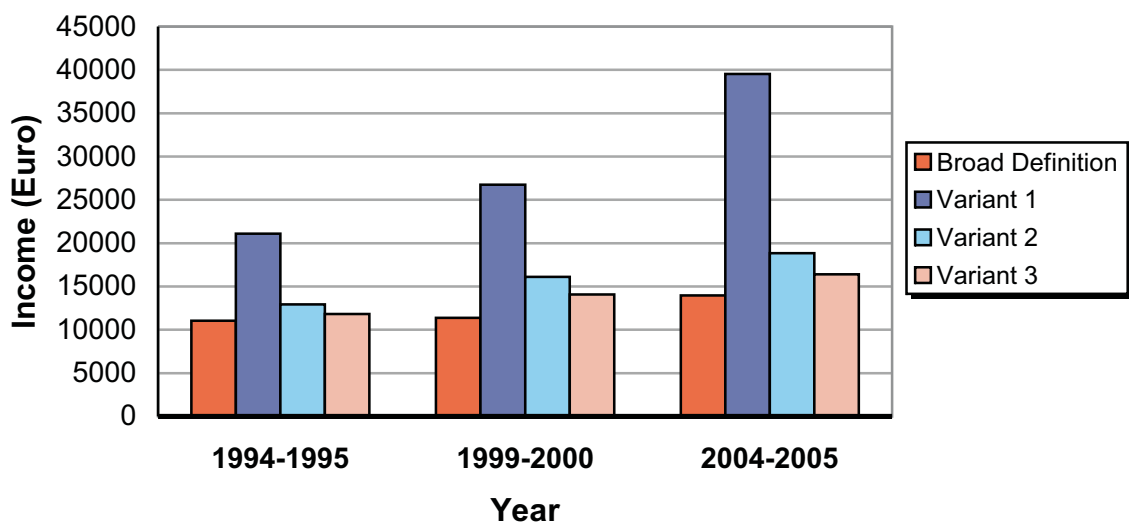


Figure 7 - Average net household income from agricultural activity by Year

The NFS estimates the incidence of off-farm employment; this figure relates to cases where an off-farm job is held by the farmer and/or the spouse. The IAHS, however, looks at the income for the entire household. Figure 8 below summarises the percentage of households that had *some* off-farm income for the 3 years analysed here.

Percentage of Households with Off-Farm Income

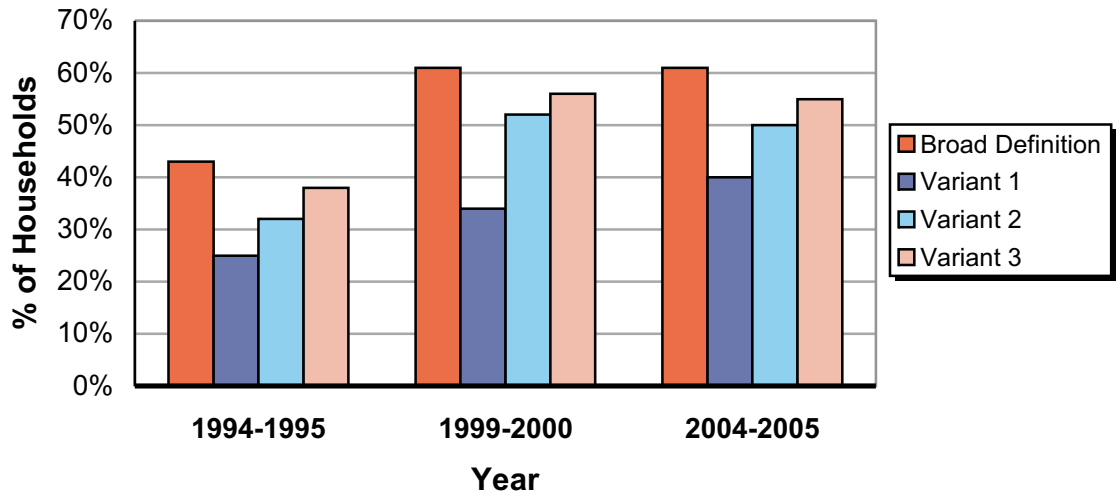


Figure 8 - Percentage of Households with Off-Farm Income

While there was a marked increase in the figures across all categories of household from 1994-1995 to 1999-2000, the situation was more stable between 1999-2000 and 2004-2005.

Tables 4, 14, and 24 in Appendix 1 present the various income components as a percentage of gross household income for agricultural and non-agricultural households. Figure 9 shows the percentage of total resources from agricultural activity for the various household concepts.

Income from Agriculture as a % of Total Resources

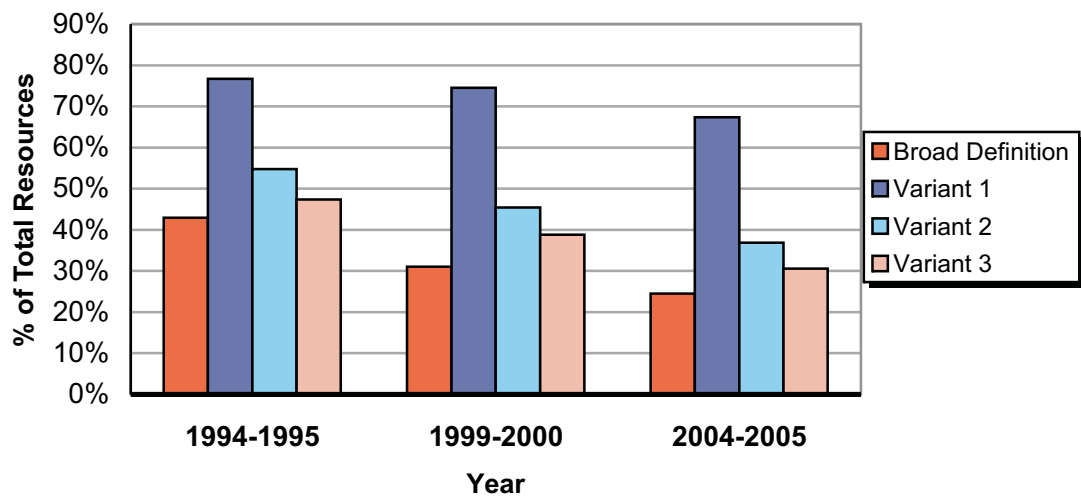


Figure 9 - Net income from agriculture as a percentage of gross household income

There has been a small but steady decline over the years in the contribution made by agricultural income to gross household income. This decline is not as apparent however for Variant 1 households.

References

CSO (2007) Household Budget Survey 2004-2005.

Eurostat (1992) Total Income of Agricultural Households: 1992 Report. Theme 5 Series C.

Eurostat (1995) Manual on the Total Income of Agricultural Households (Rev. 1).
Theme 5 Series E.

Teagasc (2006) National Farm Survey 2005.

Appendix 1

List of Tables

2004-2005

- Table 1** - Estimate of Aggregate Income for Agricultural and Non-agricultural Households
- Table 2** - Income per Consumer Unit for Agricultural and Non-agricultural Households
- Table 3** - Average Household Income for Agricultural and Non-agricultural Households
- Table 4** - Income Components as a Percentage of Total Resources for Agricultural and Non-agricultural Households
- Table 5** - Income per Consumer Unit by Age of Head of Household
- Table 6** - Average Income of Agricultural Households by Age of Head of Household
- Table 7** - Income per Consumer Unit by Sex of Head of Household
- Table 8** - Average Income of Agricultural Households by Sex of Head of Household
- Table 9** - Income per Consumer Unit where Chief Economic Supporter is Head of Household
- Table 10** - Average Household Income where Chief Economic Supporter is Head of Household

1999-2000

- Table 11** - Estimate of Aggregate Income for Agricultural and Non-agricultural Households
- Table 12** - Income per Consumer Unit for Agricultural and Non-agricultural Households
- Table 13** - Average Household Income for Agricultural and Non-agricultural Households
- Table 14** - Income Components as a Percentage of Total Resources for Agricultural and Non-agricultural Households
- Table 15** - Income per Consumer Unit by Age of Head of Household
- Table 16** - Average Income of Agricultural Households by Age of Head of Household
- Table 17** - Income per Consumer Unit by Sex of Head of Household
- Table 18** - Average Income of Agricultural Households by Sex of Head of Household
- Table 19** - Income per Consumer Unit where Chief Economic Supporter is Head of Household
- Table 20** - Average Household Income where Chief Economic Supporter is Head of Household

1994-1995

- Table 21** - Estimate of Aggregate Income for Agricultural and Non-agricultural Households
- Table 22** - Income per Consumer Unit for Agricultural and Non-agricultural Households
- Table 23** - Average Household Income for Agricultural and Non-agricultural Households
- Table 24** - Income Components as a Percentage of Total Resources for Agricultural and Non-agricultural Households
- Table 25** - Income per Consumer Unit by Age of Head of Household
- Table 26** - Average Income of Agricultural Households by Age of Head of Household
- Table 27** - Income per Consumer Unit by Sex of Head of Household
- Table 28** - Average Income of Agricultural Households by Sex of Head of Household
- Table 29** - Income per Consumer Unit where Chief Economic Supporter is Head of Household
- Table 30** - Average Household Income where Chief Economic Supporter is Head of Household

Table 1 - Aggregate Income for Agricultural and Non-agricultural Households (2004-2005)

| Description | Agricultural Households | | | | Non-Agricultural Households |
|--|-------------------------|---------------------|---------------------|---------------------|-----------------------------|
| | Broad Definition | Narrow Definition | | | |
| | | Variant 1 | Variant 2 | Variant 3 | |
| Sample Households | 786 | 227 | 495 | 565 | 6,098 |
| Population (000) | 132.7 | 22.4 | 68.9 | 84.7 | 1,335.1 |
| Persons (000) | 455.3 | 75.1 | 212.2 | 269.8 | 3,548.4 |
| Consumer Units (000) | 340.5 | 55.7 | 162.7 | 205.7 | 2,742.7 |
| Income | Million Euro | Million Euro | Million Euro | Million Euro | Million Euro |
| Net Income from Independent Activity | 2,967.2 | 1,027.9 | 1,765.7 | 2,003.8 | 13,752.5 |
| of which | | | | | |
| Agricultural Activity | 1,854.1 | 885.2 | 1,298.1 | 1,389.2 | 37.2 |
| Non-agricultural Activity | 421.8 | 23.4 | 104.8 | 172.2 | 6,337.1 |
| Imputed Rent from Owner-occupied Dwellings | 691.4 | 119.3 | 362.8 | 442.4 | 7,378.3 |
| Compensation as Employees | 3,316.6 | 137.4 | 1,009.3 | 1,679.9 | 45,985.6 |
| Property Income Received | 152.6 | 23.9 | 89.1 | 99.4 | 1,196.5 |
| Social Benefits | 1,033.0 | 102.2 | 601.0 | 697.0 | 10,434.1 |
| Miscellaneous Inward Current Transfers | 112.5 | 21.3 | 57.5 | 66.2 | 2,639.6 |
| Gross Household Income | 7,581.9 | 1,312.7 | 3,522.5 | 4,546.4 | 74,008.3 |
| Less Outgoings | | | | | |
| Current Taxes on Income and Wealth | 520.7 | 38.4 | 195.6 | 291.2 | 8,339.9 |
| Social Contributions | 144.9 | 8.3 | 46.7 | 75.3 | 1,945.8 |
| Miscellaneous outgoing Current Transfers | 210.9 | 30.3 | 102.5 | 127.7 | 2,058.8 |
| Net Disposable Income | 6,705.4 | 1,235.6 | 3,177.7 | 4,052.2 | 61,663.7 |
| Social transfers in kind | 125.1 | 18.7 | 59.7 | 75.0 | 1,127.8 |
| Net Adjusted Disposable Income | 6,830.5 | 1,254.3 | 3,237.4 | 4,127.2 | 62,791.5 |

Table 2 - Income per Consumer Unit for Agricultural and Non-agricultural Households (2004-2005)

| Description | Agricultural Households | | | | Non-Agricultural Households |
|--|-------------------------|-------------------|---------------|---------------|-----------------------------|
| | Broad Definition | Narrow Definition | | | |
| | | Variant 1 | Variant 2 | Variant 3 | |
| Sample Households | 786 | 227 | 495 | 565 | 6,098 |
| Population (000) | 132.7 | 22.4 | 68.9 | 84.7 | 1,335.1 |
| Persons (000) | 455.3 | 75.1 | 212.2 | 269.8 | 3,548.4 |
| Consumer Units (000) | 340.5 | 55.7 | 162.7 | 205.7 | 2,742.7 |
| Income | Euro | Euro | Euro | Euro | Euro |
| Net Income from Independent Activity | 8,715 | 18,469 | 10,851 | 9,740 | 5,014 |
| of which | | | | | |
| Agricultural Activity | 5,445 | 15,904 | 7,977 | 6,753 | 14 |
| Non-agricultural Activity | 1,239 | 421 | 644 | 837 | 2,310 |
| Imputed Rent from Owner-occupied Dwellings | 2,031 | 2,144 | 2,229 | 2,150 | 2,690 |
| Compensation as Employees | 9,741 | 2,469 | 6,202 | 8,166 | 16,766 |
| Property Income Received | 448 | 429 | 548 | 483 | 436 |
| Social Benefits | 3,034 | 1,836 | 3,693 | 3,388 | 3,804 |
| Miscellaneous Inward Current Transfers | 330 | 382 | 353 | 322 | 962 |
| Gross Household Income | 22,268 | 23,585 | 21,647 | 22,099 | 26,983 |
| Less Outgoings | | | | | |
| Current Taxes on Income and Wealth | 1,529 | 691 | 1,202 | 1,416 | 3,041 |
| Social Contributions | 426 | 149 | 287 | 366 | 709 |
| Miscellaneous outgoing Current Transfers | 619 | 544 | 630 | 621 | 751 |
| Net Disposable Income | 19,694 | 22,201 | 19,528 | 19,697 | 22,482 |
| Social transfers in kind | 367 | 336 | 367 | 365 | 411 |
| Net Adjusted Disposable Income | 20,061 | 22,537 | 19,895 | 20,061 | 22,894 |

Table 3 - Average Household Income for Agricultural and Non-agricultural Households (2004-2005)

| Description | Agricultural Households | | | | Non-Agricultural Households |
|--|-------------------------|-------------------|---------------|---------------|-----------------------------|
| | Broad Definition | Narrow Definition | | | |
| | | Variant 1 | Variant 2 | Variant 3 | |
| Sample Households | 786 | 227 | 495 | 565 | 6,098 |
| Population (000) | 132.7 | 22.4 | 68.9 | 84.7 | 1,335.1 |
| Persons (000) | 455.3 | 75.1 | 212.2 | 269.8 | 3,548.4 |
| Consumer Units (000) | 340.5 | 55.7 | 162.7 | 205.7 | 2,742.7 |
| Income | Euro | Euro | Euro | Euro | Euro |
| Net Income from Independent Activity | 22,364 | 45,893 | 25,611 | 23,663 | 10,301 |
| of which | | | | | |
| Agricultural Activity | 13,974 | 39,520 | 18,829 | 16,405 | 28 |
| Non-agricultural Activity | 3,179 | 1,046 | 1,519 | 2,033 | 4,747 |
| Imputed Rent from Owner-occupied Dwellings | 5,211 | 5,328 | 5,262 | 5,224 | 5,526 |
| Compensation as Employees | 24,998 | 6,135 | 14,640 | 19,838 | 34,444 |
| Property Income Received | 1,150 | 1,067 | 1,293 | 1,174 | 896 |
| Social Benefits | 7,786 | 4,562 | 8,717 | 8,231 | 7,815 |
| Miscellaneous Inward Current Transfers | 848 | 949 | 834 | 782 | 1,977 |
| Gross Household Income | 57,146 | 58,605 | 51,095 | 53,688 | 55,434 |
| Less Outgoings | | | | | |
| Current Taxes on Income and Wealth | 3,924 | 1,716 | 2,838 | 3,439 | 6,247 |
| Social Contributions | 1,092 | 371 | 678 | 889 | 1,457 |
| Miscellaneous outgoing Current Transfers | 1,590 | 1,351 | 1,486 | 1,508 | 1,542 |
| Net Disposable Income | 50,540 | 55,167 | 46,093 | 47,852 | 46,187 |
| Social transfers in kind | 943 | 835 | 866 | 886 | 845 |
| Net Adjusted Disposable Income | 51,483 | 56,002 | 46,959 | 48,738 | 47,032 |

Table 4 - Income Components as a Percentage of Total Resources for Agricultural and Non-agricultural Households (2004-2005)

| Description | Agricultural Households | | | | Non-Agricultural Households |
|--|-------------------------|-------------------|-------------|-------------|-----------------------------|
| | Broad Definition | Narrow Definition | | | |
| | | Variant 1 | Variant 2 | Variant 3 | |
| Sample Households | 786 | 227 | 495 | 565 | 6,098 |
| Population (000) | 132.7 | 22.4 | 68.9 | 84.7 | 1,335.1 |
| Persons (000) | 455.3 | 75.1 | 212.2 | 269.8 | 3,548.4 |
| Consumer Units (000) | 340.5 | 55.7 | 162.7 | 205.7 | 2,742.7 |
| Income | % | % | % | % | % |
| Net Income from Independent Activity | 39.1 | 78.3 | 50.1 | 44.1 | 18.6 |
| of which | | | | | |
| Agricultural Activity | 24.5 | 67.4 | 36.9 | 30.6 | 0.1 |
| Non-agricultural Activity | 5.6 | 1.8 | 3.0 | 3.8 | 8.6 |
| Imputed Rent from Owner-occupied Dwellings | 9.1 | 9.1 | 10.3 | 9.7 | 10.0 |
| Compensation as Employees | 43.7 | 10.5 | 28.7 | 37.0 | 62.1 |
| Property Income Received | 2.0 | 1.8 | 2.5 | 2.2 | 1.6 |
| Social Benefits | 13.6 | 7.8 | 17.1 | 15.3 | 14.1 |
| Miscellaneous Inward Current Transfers | 1.5 | 1.6 | 1.6 | 1.5 | 3.6 |
| Gross Household Income | 100 | 100 | 100 | 100 | 100 |
| Less Outgoings | | | | | |
| Current Taxes on Income and Wealth | 6.9 | 2.9 | 5.6 | 6.4 | 11.3 |
| Social Contributions | 1.9 | 0.6 | 1.3 | 1.7 | 2.6 |
| Miscellaneous outgoing Current Transfers | 2.8 | 2.3 | 2.9 | 2.8 | 2.8 |
| Net Disposable Income | 88.4 | 94.1 | 90.2 | 89.1 | 83.3 |
| Social transfers in kind | 1.6 | 1.4 | 1.7 | 1.6 | 1.5 |
| Net Adjusted Disposable Income | 90.1 | 95.6 | 91.9 | 90.8 | 84.8 |

Table 5 - Income per Consumer Unit by Age of Head of Household (HOH) (2004-2005)

| Description | Agricultural Households | | | | | | | | | | | | Non-Agricultural Households | | | | |
|--|-------------------------|---------------|---------------|-------------------|---------------|---------------|---------------|---------------|---------------|---------------|---------------|---------------|-----------------------------|---------------|---------------|-------|-------|
| | Broad Definition | | | Narrow Definition | | | | | | | | | | | | | |
| | | | | Variant 1 | | | Variant 2 | | | Variant 3 | | | | | | | |
| | Age of HOH | | | Age of HOH | | | Age of HOH | | | Age of HOH | | | Age of HOH | | | | |
| <35 | 35-64 | >= 65 | <35 | 35-64 | >= 65 | <35 | 35-64 | >= 65 | <35 | 35-64 | >= 65 | <35 | 35-64 | >= 65 | <35 | 35-64 | >= 65 |
| Sample Households | 34 | 602 | 150 | 16 | 182 | 29 | 19 | 349 | 127 | 25 | 410 | 130 | 1,115 | 3,689 | 1,294 | | |
| Population (000) | 4.6 | 99.9 | 28.2 | 1.4 | 18.0 | 3.1 | 1.6 | 44.6 | 22.8 | 2.7 | 58.1 | 23.9 | 226.5 | 781.5 | 327.1 | | |
| Persons (000) | 15.9 | 376.2 | 63.2 | 4.0 | 64.2 | 6.9 | 5.3 | 159.1 | 47.9 | 7.7 | 212.2 | 49.9 | 642.5 | 2,404.8 | 501.1 | | |
| Consumer Units (000) | 11.2 | 277.1 | 52.2 | 3.0 | 46.9 | 5.8 | 3.8 | 118.6 | 40.3 | 5.8 | 157.9 | 42.1 | 483.5 | 1,810.8 | 448.5 | | |
| Income | Euro | Euro | Euro | Euro | Euro | Euro | Euro | Euro | Euro | Euro | Euro | Euro | Euro | Euro | Euro | | |
| Net Income from Independent Activity | 12,028 | 8,711 | 8,025 | 24,347 | 18,063 | 18,725 | 21,129 | 11,354 | 8,397 | 17,271 | 9,859 | 8,262 | 3,537 | 5,303 | 5,439 | | |
| of which | | | | | | | | | | | | | | | | | |
| Agricultural Activity | 9,668 | 5,424 | 4,654 | 21,844 | 15,563 | 15,603 | 18,856 | 8,599 | 5,119 | 14,204 | 6,947 | 5,003 | 8 | 13 | 21 | | |
| Non-agricultural Activity | 619 | 1,356 | 750 | 671 | 436 | 166 | 525 | 728 | 407 | 1,200 | 943 | 391 | 2,420 | 2,675 | 721 | | |
| Imputed Rent from Owner-occupied Dwellings | 1,741 | 1,931 | 2,622 | 1,832 | 2,064 | 2,956 | 1,748 | 2,027 | 2,871 | 1,867 | 1,970 | 2,868 | 1,109 | 2,615 | 4,697 | | |
| Compensation as Employees | 11,838 | 10,722 | 4,084 | 3,880 | 2,603 | 643 | 6,694 | 6,799 | 4,403 | 11,919 | 9,059 | 4,298 | 21,777 | 18,973 | 2,456 | | |
| Property Income Received | 328 | 396 | 748 | 154 | 440 | 482 | 138 | 425 | 948 | 104 | 383 | 910 | 234 | 421 | 717 | | |
| Social Benefits | 1,785 | 2,352 | 6,921 | 2,173 | 1,500 | 4,396 | 2,166 | 2,579 | 7,114 | 1,965 | 2,407 | 7,268 | 2,030 | 2,807 | 9,743 | | |
| Miscellaneous Inward Current Transfers | 252 | 306 | 480 | 221 | 423 | 130 | 422 | 302 | 498 | 310 | 277 | 492 | 447 | 640 | 2,818 | | |
| Gross Household Income | 26,231 | 22,487 | 20,258 | 30,775 | 23,029 | 24,377 | 30,549 | 21,457 | 21,361 | 31,568 | 21,985 | 21,230 | 28,025 | 28,144 | 21,174 | | |
| Less Outgoings | | | | | | | | | | | | | | | | | |
| Current Taxes on Income and Wealth | 2,056 | 1,622 | 922 | 1,512 | 701 | 182 | 1,571 | 1,230 | 1,087 | 2,323 | 1,482 | 1,042 | 3,349 | 3,522 | 766 | | |
| Social Contributions | 513 | 467 | 187 | 318 | 152 | 39 | 367 | 309 | 216 | 585 | 400 | 207 | 943 | 784 | 156 | | |
| Miscellaneous outgoing Current Transfers | 575 | 601 | 725 | 368 | 525 | 787 | 937 | 618 | 634 | 682 | 620 | 615 | 520 | 795 | 819 | | |
| Net Disposable Income | 23,087 | 19,796 | 18,423 | 28,576 | 21,651 | 23,368 | 27,674 | 19,301 | 19,424 | 27,978 | 19,483 | 19,365 | 23,213 | 23,043 | 19,433 | | |
| Social transfers in kind | 259 | 364 | 407 | 290 | 328 | 424 | 283 | 350 | 423 | 295 | 352 | 422 | 384 | 392 | 516 | | |
| Net Adjusted Disposable Income | 23,346 | 20,160 | 18,830 | 28,866 | 21,980 | 23,792 | 27,957 | 19,651 | 19,847 | 28,273 | 19,834 | 19,787 | 23,597 | 23,435 | 19,949 | | |

Table 6 - Average Household Income by Age of Head of Household (HOH) (2004-2005)

| Description | Agricultural Households | | | | | | | | | | | | Non-Agricultural Households | | |
|--|-------------------------|---------------|---------------|-------------------|---------------|---------------|---------------|---------------|---------------|---------------|---------------|---------------|-----------------------------|---------------|---------------|
| | Broad Definition | | | Narrow Definition | | | | | | | | | | | |
| | | | | Variant 1 | | | Variant 2 | | | Variant 3 | | | | | |
| | Age of HOH | | | Age of HOH | | | Age of HOH | | | Age of HOH | | | Age of HOH | | |
| <35 | 35-64 | >= 65 | <35 | 35-64 | >= 65 | <35 | 35-64 | >= 65 | <35 | 35-64 | >= 65 | <35 | 35-64 | >= 65 | |
| Sample Households | 34 | 602 | 150 | 16 | 182 | 29 | 19 | 349 | 127 | 25 | 410 | 130 | 1,115 | 3,689 | 1,294 |
| Population (000) | 4.6 | 99.9 | 28.2 | 1.4 | 18.0 | 3.1 | 1.6 | 44.6 | 22.8 | 2.7 | 58.1 | 23.9 | 226.5 | 781.5 | 327.1 |
| Persons (000) | 15.9 | 376.2 | 63.2 | 4.0 | 64.2 | 6.9 | 5.3 | 159.1 | 47.9 | 7.7 | 212.2 | 49.9 | 642.5 | 2,404.8 | 501.1 |
| Consumer Units (000) | 11.2 | 277.1 | 52.2 | 3.0 | 46.9 | 5.8 | 3.8 | 118.6 | 40.3 | 5.8 | 157.9 | 42.1 | 483.5 | 1,810.8 | 448.5 |
| Income | Euro | Euro | Euro | Euro | Euro | Euro | Euro | Euro | Euro | Euro | Euro | Euro | Euro | Euro | Euro |
| Net Income from Independent Activity | 29,507 | 24,162 | 14,848 | 52,854 | 47,184 | 35,198 | 50,666 | 30,206 | 14,867 | 37,360 | 26,788 | 14,538 | 7,549 | 12,288 | 7,458 |
| of which | | | | | | | | | | | | | | | |
| Agricultural Activity | 23,717 | 15,046 | 8,610 | 47,420 | 40,653 | 29,329 | 45,215 | 22,877 | 9,063 | 30,725 | 18,875 | 8,803 | 16 | 31 | 29 |
| Non-agricultural Activity | 1,519 | 3,761 | 1,387 | 1,458 | 1,139 | 313 | 1,259 | 1,937 | 721 | 2,596 | 2,561 | 688 | 5,165 | 6,198 | 988 |
| Imputed Rent from Owner-occupied Dwellings | 4,271 | 5,356 | 4,851 | 3,976 | 5,392 | 5,556 | 4,191 | 5,392 | 5,083 | 4,039 | 5,351 | 5,047 | 2,368 | 6,059 | 6,441 |
| Compensation as Employees | 29,042 | 29,740 | 7,555 | 8,422 | 6,799 | 1,209 | 16,053 | 18,088 | 7,795 | 25,783 | 24,613 | 7,564 | 46,480 | 43,961 | 3,368 |
| Property Income Received | 804 | 1,100 | 1,384 | 335 | 1,150 | 905 | 332 | 1,130 | 1,679 | 224 | 1,041 | 1,602 | 500 | 975 | 983 |
| Social Benefits | 4,380 | 6,524 | 12,805 | 4,716 | 3,919 | 8,264 | 5,193 | 6,860 | 12,596 | 4,250 | 6,539 | 12,789 | 4,332 | 6,504 | 13,360 |
| Miscellaneous Inward Current Transfers | 617 | 847 | 887 | 479 | 1,105 | 245 | 1,013 | 802 | 882 | 670 | 753 | 865 | 955 | 1,484 | 3,864 |
| Gross Household Income | 64,351 | 62,372 | 37,480 | 66,807 | 60,157 | 45,820 | 73,256 | 57,087 | 37,820 | 68,287 | 59,734 | 37,358 | 59,816 | 65,212 | 29,033 |
| Less Outgoings | | | | | | | | | | | | | | | |
| Current Taxes on Income and Wealth | 5,045 | 4,500 | 1,707 | 3,283 | 1,830 | 342 | 3,767 | 3,271 | 1,924 | 5,024 | 4,027 | 1,834 | 7,148 | 8,160 | 1,050 |
| Social Contributions | 1,258 | 1,295 | 346 | 690 | 398 | 72 | 881 | 821 | 383 | 1,265 | 1,087 | 365 | 2,013 | 1,817 | 214 |
| Miscellaneous outgoing Current Transfers | 1,410 | 1,668 | 1,342 | 799 | 1,372 | 1,480 | 2,247 | 1,645 | 1,123 | 1,476 | 1,685 | 1,082 | 1,110 | 1,843 | 1,123 |
| Net Disposable Income | 56,637 | 54,909 | 34,086 | 62,034 | 56,558 | 43,925 | 66,361 | 51,349 | 34,391 | 60,521 | 52,936 | 34,077 | 49,546 | 53,392 | 26,646 |
| Social transfers in kind | 637 | 1,010 | 754 | 630 | 857 | 797 | 680 | 932 | 750 | 638 | 956 | 742 | 820 | 909 | 708 |
| Net Adjusted Disposable Income | 57,274 | 55,920 | 34,839 | 62,664 | 57,415 | 44,722 | 67,041 | 52,281 | 35,140 | 61,159 | 53,892 | 34,819 | 50,365 | 54,301 | 27,353 |

Table 7 - Income per Consumer Unit by Sex of Head of Household (HOH) (2004-2005)

| Description | Agricultural Households | | | | | | | | Non-Agricultural Households | |
|--|-------------------------|---------------|-------------------|---------------|---------------|---------------|---------------|---------------|-----------------------------|---------------|
| | Broad Definition | | Narrow Definition | | | | | | | |
| | | | Variant 1 | | Variant 2 | | Variant 3 | | | |
| | Sex of HOH | | Sex of HOH | | Sex of HOH | | Sex of HOH | | Sex of HOH | |
| | Male | Female | Male | Female | Male | Female | Male | Female | Male | Female |
| Sample Households | 641 | 145 | 190 | 37 | 478 | 17 | 546 | 19 | 3,482 | 2,616 |
| Population (000) | 103.1 | 29.6 | 18.6 | 3.8 | 66.0 | 3.0 | 81.0 | 3.6 | 755.6 | 579.5 |
| Persons (000) | 348.1 | 107.2 | 62.0 | 13.1 | 204.0 | 8.2 | 259.9 | 9.9 | 2,163.3 | 1,385.1 |
| Consumer Units (000) | 261.3 | 79.1 | 46.0 | 9.7 | 156.3 | 6.4 | 198.0 | 7.7 | 1,652.6 | 1,090.1 |
| Income | Euro | Euro | Euro | Euro | Euro | Euro | Euro | Euro | Euro | Euro |
| Net Income from Independent Activity | 9,093 | 7,467 | 18,839 | 16,717 | 10,861 | 10,592 | 9,752 | 9,429 | 5,128 | 4,842 |
| of which | | | | | | | | | | |
| Agricultural Activity | 5,761 | 4,404 | 16,194 | 14,528 | 8,005 | 7,296 | 6,772 | 6,258 | 16 | 10 |
| Non-agricultural Activity | 1,292 | 1,063 | 483 | 127 | 636 | 841 | 842 | 695 | 2,478 | 2,057 |
| Imputed Rent from Owner-occupied Dwellings | 2,040 | 1,999 | 2,161 | 2,062 | 2,220 | 2,456 | 2,138 | 2,475 | 2,635 | 2,774 |
| Compensation as Employees | 9,794 | 9,565 | 2,665 | 1,538 | 6,363 | 2,272 | 8,302 | 4,685 | 18,138 | 14,687 |
| Property Income Received | 446 | 457 | 464 | 265 | 554 | 391 | 489 | 328 | 463 | 395 |
| Social Benefits | 2,998 | 3,154 | 1,891 | 1,573 | 3,612 | 5,676 | 3,333 | 4,803 | 3,499 | 4,267 |
| Miscellaneous Inward Current Transfers | 298 | 439 | 294 | 800 | 362 | 139 | 330 | 115 | 1,052 | 826 |
| Gross Household Income | 22,627 | 21,081 | 24,152 | 20,893 | 21,753 | 19,071 | 22,206 | 19,360 | 28,280 | 25,017 |
| Less Outgoings | | | | | | | | | | |
| Current Taxes on Income and Wealth | 1,552 | 1,453 | 751 | 402 | 1,214 | 903 | 1,432 | 991 | 3,337 | 2,591 |
| Social Contributions | 411 | 474 | 161 | 93 | 296 | 83 | 374 | 144 | 764 | 626 |
| Miscellaneous outgoing Current Transfers | 651 | 517 | 574 | 400 | 628 | 675 | 623 | 565 | 825 | 638 |
| Net Disposable Income | 20,013 | 18,637 | 22,666 | 19,999 | 19,615 | 17,410 | 19,776 | 17,660 | 23,354 | 21,161 |
| Social transfers in kind | 361 | 387 | 337 | 332 | 361 | 506 | 360 | 484 | 408 | 416 |
| Net Adjusted Disposable Income | 20,375 | 19,025 | 23,002 | 20,331 | 19,976 | 17,916 | 20,136 | 18,145 | 23,762 | 21,578 |

Table 8 - Average Household Income by Sex of Head of Household (HOH) (2004-2005)

| Description | Agricultural Households | | | | | | | | Non-Agricultural Households | |
|--|-------------------------|---------------|-------------------|---------------|---------------|---------------|---------------|---------------|-----------------------------|---------------|
| | Broad Definition | | Narrow Definition | | | | | | | |
| | | | Variant 1 | | Variant 2 | | Variant 3 | | | |
| | Sex of HOH | | Sex of HOH | | Sex of HOH | | Sex of HOH | | Sex of HOH | |
| Male | Female | Male | Female | Male | Female | Male | Female | Male | Female | |
| Sample Households | 641 | 145 | 190 | 37 | 478 | 17 | 546 | 19 | 3,482 | 2,616 |
| Population (000) | 103.1 | 29.6 | 18.6 | 3.8 | 66.0 | 3.0 | 81.0 | 3.6 | 755.6 | 579.5 |
| Persons (000) | 348.1 | 107.2 | 62.0 | 13.1 | 204.0 | 8.2 | 259.9 | 9.9 | 2,163.3 | 1,385.1 |
| Consumer Units (000) | 261.3 | 79.1 | 46.0 | 9.7 | 156.3 | 6.4 | 198.0 | 7.7 | 1,652.6 | 1,090.1 |
| Income | Euro | Euro | Euro | Euro | Euro | Euro | Euro | Euro | Euro | Euro |
| Net Income from Independent Activity | 23,047 | 19,985 | 46,455 | 43,107 | 25,746 | 22,639 | 23,827 | 20,019 | 11,216 | 9,108 |
| of which | | | | | | | | | | |
| Agricultural Activity | 14,601 | 11,788 | 39,935 | 37,463 | 18,976 | 15,593 | 16,546 | 13,287 | 35 | 19 |
| Non-agricultural Activity | 3,275 | 2,845 | 1,190 | 328 | 1,507 | 1,797 | 2,058 | 1,477 | 5,419 | 3,870 |
| Imputed Rent from Owner-occupied Dwellings | 5,171 | 5,351 | 5,330 | 5,316 | 5,263 | 5,249 | 5,223 | 5,255 | 5,762 | 5,219 |
| Compensation as Employees | 24,825 | 25,601 | 6,572 | 3,967 | 15,084 | 4,856 | 20,283 | 9,947 | 39,672 | 27,629 |
| Property Income Received | 1,129 | 1,222 | 1,144 | 682 | 1,314 | 835 | 1,195 | 697 | 1,013 | 744 |
| Social Benefits | 7,598 | 8,441 | 4,664 | 4,057 | 8,562 | 12,132 | 8,143 | 10,197 | 7,654 | 8,026 |
| Miscellaneous Inward Current Transfers | 754 | 1,175 | 724 | 2,063 | 858 | 298 | 806 | 245 | 2,301 | 1,555 |
| Gross Household Income | 57,353 | 56,424 | 59,559 | 53,877 | 51,563 | 40,760 | 54,254 | 41,104 | 61,856 | 47,060 |
| Less Outgoings | | | | | | | | | | |
| Current Taxes on Income and Wealth | 3,934 | 3,889 | 1,853 | 1,036 | 2,879 | 1,929 | 3,499 | 2,104 | 7,299 | 4,875 |
| Social Contributions | 1,042 | 1,268 | 398 | 240 | 701 | 177 | 915 | 305 | 1,672 | 1,178 |
| Miscellaneous outgoing Current Transfers | 1,649 | 1,383 | 1,416 | 1,030 | 1,488 | 1,444 | 1,522 | 1,199 | 1,804 | 1,201 |
| Net Disposable Income | 50,728 | 49,883 | 55,892 | 51,570 | 46,496 | 37,210 | 48,318 | 37,496 | 51,082 | 39,806 |
| Social transfers in kind | 916 | 1,036 | 831 | 857 | 856 | 1,082 | 879 | 1,028 | 892 | 783 |
| Net Adjusted Disposable Income | 51,644 | 50,920 | 56,723 | 52,427 | 47,352 | 38,292 | 49,197 | 38,524 | 51,974 | 40,589 |

Table 9 - Income per Consumer Unit where Chief Economic Supporter (CES) = Head of Household (HOH) (2004-2005)

| Description | CES = HOH | | | | |
|--|------------------|-------------------|---------------|---------------|-----------------------------|
| | Broad Definition | Narrow Definition | | | Non-Agricultural Households |
| | | Variant 1 | Variant 2 | Variant 3 | |
| Sample Households | 531 | 191 | 363 | 421 | 4,396 |
| Population (000) | 87.9 | 18.7 | 50.0 | 63.0 | 978.6 |
| Persons (000) | 282.3 | 61.3 | 141.0 | 185.8 | 2,363.2 |
| Consumer Units (000) | 212.0 | 45.5 | 109.3 | 142.8 | 1,850.1 |
| Income | Euro | Euro | Euro | Euro | Euro |
| Net Income from Independent Activity | 9,599 | 18,856 | 12,628 | 11,066 | 5,102 |
| of which | | | | | |
| Agricultural Activity | 6,371 | 16,205 | 9,743 | 8,051 | 14 |
| Non-agricultural Activity | 1,067 | 474 | 502 | 723 | 2,124 |
| Imputed Rent from Owner-occupied Dwellings | 2,161 | 2,177 | 2,383 | 2,292 | 2,963 |
| Compensation as Employees | 7,967 | 2,684 | 2,958 | 5,923 | 16,049 |
| Property Income Received | 531 | 476 | 630 | 518 | 451 |
| Social Benefits | 3,092 | 1,831 | 3,821 | 3,490 | 4,174 |
| Miscellaneous Inward Current Transfers | 254 | 234 | 348 | 303 | 1,099 |
| Gross Household Income | 21,443 | 24,082 | 20,385 | 21,301 | 26,875 |
| Less Outgoings | | | | | |
| Current Taxes on Income and Wealth | 1,215 | 764 | 663 | 1,037 | 3,039 |
| Social Contributions | 339 | 163 | 139 | 270 | 670 |
| Miscellaneous outgoing Current Transfers | 636 | 570 | 616 | 613 | 789 |
| Net Disposable Income | 19,252 | 22,586 | 18,969 | 19,381 | 22,378 |
| Social transfers in kind | 360 | 337 | 360 | 357 | 413 |
| Net Adjusted Disposable Income | 19,612 | 22,923 | 19,329 | 19,738 | 22,791 |

Table 10 - Average Household Income where Chief Economic Supporter (CES) = Head of Household (HOH) (2004-2005)

| Description | CES = HOH | | | | |
|--|------------------|-------------------|---------------|---------------|-----------------------------|
| | Broad Definition | Narrow Definition | | | Non-Agricultural Households |
| | | Variant 1 | Variant 2 | Variant 3 | |
| Sample Households | 531 | 191 | 363 | 421 | 4,396 |
| Population (000) | 87.9 | 18.7 | 50.0 | 63.0 | 978.6 |
| Persons (000) | 282.3 | 61.3 | 141.0 | 185.8 | 2,363.2 |
| Consumer Units (000) | 212.0 | 45.5 | 109.3 | 142.8 | 1,850.1 |
| Income | Euro | Euro | Euro | Euro | Euro |
| Net Income from Independent Activity | 23,138 | 45,979 | 27,589 | 25,090 | 9,646 |
| of which | | | | | |
| Agricultural Activity | 15,357 | 39,515 | 21,286 | 18,254 | 27 |
| Non-agricultural Activity | 2,572 | 1,155 | 1,097 | 1,639 | 4,016 |
| Imputed Rent from Owner-occupied Dwellings | 5,209 | 5,309 | 5,206 | 5,197 | 5,602 |
| Compensation as Employees | 19,204 | 6,545 | 6,463 | 13,430 | 30,342 |
| Property Income Received | 1,280 | 1,161 | 1,376 | 1,175 | 852 |
| Social Benefits | 7,454 | 4,464 | 8,349 | 7,913 | 7,891 |
| Miscellaneous Inward Current Transfers | 613 | 572 | 761 | 688 | 2,077 |
| Gross Household Income | 51,690 | 58,722 | 44,537 | 48,296 | 50,809 |
| Less Outgoings | | | | | |
| Current Taxes on Income and Wealth | 2,930 | 1,862 | 1,447 | 2,352 | 5,745 |
| Social Contributions | 818 | 397 | 303 | 611 | 1,266 |
| Miscellaneous outgoing Current Transfers | 1,534 | 1,389 | 1,345 | 1,391 | 1,492 |
| Net Disposable Income | 46,409 | 55,074 | 41,441 | 43,942 | 42,306 |
| Social transfers in kind | 868 | 822 | 787 | 810 | 781 |
| Net Adjusted Disposable Income | 47,277 | 55,896 | 42,228 | 44,752 | 43,088 |

Table 11 - Aggregate Income for Agricultural and Non-agricultural Households (1999-2000)

| Description | Agricultural Households | | | | Non-Agricultural Households |
|--|-------------------------|---------------------|---------------------|---------------------|-----------------------------|
| | Broad Definition | Narrow Definition | | | |
| | | Variant 1 | Variant 2 | Variant 3 | |
| Sample Households | 755 | 269 | 513 | 593 | 6,889 |
| Population (000) | 140.2 | 35.8 | 80.0 | 97.0 | 1,107.8 |
| Persons (000) | 525.7 | 118.9 | 280.9 | 348.1 | 3,358.0 |
| Consumer Units (000) | 384.9 | 87.7 | 209.6 | 258.3 | 2,532.8 |
| Income | Million Euro | Million Euro | Million Euro | Million Euro | Million Euro |
| Net Income from Independent Activity | 2,182.4 | 1,060.4 | 1,553.8 | 1,747.7 | 6,168.3 |
| of which | | | | | |
| Agricultural Activity | 1,593.4 | 957.5 | 1,289.7 | 1,365.3 | 28.2 |
| Non-agricultural Activity | 234.3 | 11.2 | 60.6 | 136.9 | 3,187.1 |
| Imputed Rent from Owner-occupied Dwellings | 354.7 | 91.7 | 203.5 | 245.4 | 2,953.0 |
| Compensation as Employees | 2,266.2 | 120.9 | 834.0 | 1,258.6 | 26,923.0 |
| Property Income Received | 110.5 | 22.2 | 89.2 | 93.6 | 613.4 |
| Social Benefits | 503.1 | 70.8 | 319.4 | 365.7 | 5,511.3 |
| Miscellaneous Inward Current Transfers | 85.8 | 10.9 | 45.0 | 53.9 | 1,824.0 |
| Gross Household Income | 5,147.9 | 1,285.3 | 2,841.4 | 3,519.4 | 41,040.0 |
| Less Outgoings | | | | | |
| Current Taxes on Income and Wealth | 470.4 | 81.2 | 223.7 | 289.4 | 5,823.2 |
| Social Contributions | 101.6 | 16.5 | 43.7 | 59.4 | 1,056.6 |
| Miscellaneous outgoing Current Transfers | 131.2 | 30.7 | 72.1 | 86.1 | 1,027.4 |
| Net Disposable Income | 4,444.8 | 1,157.0 | 2,502.0 | 3,084.6 | 33,132.8 |
| Social transfers in kind | 145.7 | 30.1 | 82.5 | 100.2 | 1,008.3 |
| Net Adjusted Disposable Income | 4,590.5 | 1,187.1 | 2,584.6 | 3,184.8 | 34,141.1 |

Table 12 - Income per Consumer Unit for Agricultural and Non-agricultural Households (1999-2000)

| Description | Agricultural Households | | | | Non-Agricultural Households |
|--|-------------------------|-------------------|---------------|---------------|-----------------------------|
| | Broad Definition | Narrow Definition | | | |
| | | Variant 1 | Variant 2 | Variant 3 | |
| Sample Households | 755 | 269 | 513 | 593 | 6,889 |
| Population (000) | 140.2 | 35.8 | 80.0 | 97.0 | 1,107.8 |
| Persons (000) | 525.7 | 118.9 | 280.9 | 348.1 | 3,358.0 |
| Consumer Units (000) | 384.9 | 87.7 | 209.6 | 258.3 | 2,532.8 |
| Income | Euro | Euro | Euro | Euro | Euro |
| Net Income from Independent Activity | 5,670 | 12,088 | 7,413 | 6,767 | 2,435 |
| of which | | | | | |
| Agricultural Activity | 4,139 | 10,915 | 6,154 | 5,286 | 11 |
| Non-agricultural Activity | 609 | 127 | 289 | 530 | 1,258 |
| Imputed Rent from Owner-occupied Dwellings | 921 | 1,046 | 971 | 950 | 1,166 |
| Compensation as Employees | 5,887 | 1,379 | 3,979 | 4,874 | 10,630 |
| Property Income Received | 287 | 253 | 426 | 362 | 242 |
| Social Benefits | 1,307 | 807 | 1,524 | 1,416 | 2,176 |
| Miscellaneous Inward Current Transfers | 223 | 125 | 215 | 209 | 720 |
| Gross Household Income | 13,374 | 14,651 | 13,557 | 13,627 | 16,203 |
| Less Outgoings | | | | | |
| Current Taxes on Income and Wealth | 1,222 | 925 | 1,067 | 1,120 | 2,299 |
| Social Contributions | 264 | 188 | 208 | 230 | 417 |
| Miscellaneous outgoing Current Transfers | 341 | 350 | 344 | 333 | 406 |
| Net Disposable Income | 11,547 | 13,189 | 11,938 | 11,944 | 13,081 |
| Social transfers in kind | 378 | 343 | 394 | 388 | 398 |
| Net Adjusted Disposable Income | 11,925 | 13,531 | 12,331 | 12,332 | 13,479 |

Table 13 - Average Household Income for Agricultural and Non-agricultural Households (1999-2000)

| Description | Agricultural Households | | | | Non-Agricultural Households |
|--|-------------------------|-------------------|---------------|---------------|-----------------------------|
| | Broad Definition | Narrow Definition | | | |
| | | Variant 1 | Variant 2 | Variant 3 | |
| Sample Households | 755 | 269 | 513 | 593 | 6,889 |
| Population (000) | 140.2 | 35.8 | 80.0 | 97.0 | 1,107.8 |
| Persons (000) | 525.7 | 118.9 | 280.9 | 348.1 | 3,358.0 |
| Consumer Units (000) | 384.9 | 87.7 | 209.6 | 258.3 | 2,532.8 |
| Income | Euro | Euro | Euro | Euro | Euro |
| Net Income from Independent Activity | 15,572 | 29,616 | 19,417 | 18,013 | 5,568 |
| of which | | | | | |
| Agricultural Activity | 11,369 | 26,742 | 16,118 | 14,072 | 25 |
| Non-agricultural Activity | 1,672 | 312 | 757 | 1,412 | 2,877 |
| Imputed Rent from Owner-occupied Dwellings | 2,531 | 2,562 | 2,543 | 2,530 | 2,666 |
| Compensation as Employees | 16,169 | 3,378 | 10,423 | 12,973 | 24,304 |
| Property Income Received | 788 | 620 | 1,115 | 965 | 554 |
| Social Benefits | 3,589 | 1,978 | 3,991 | 3,769 | 4,975 |
| Miscellaneous Inward Current Transfers | 612 | 305 | 563 | 555 | 1,647 |
| Gross Household Income | 36,730 | 35,898 | 35,509 | 36,275 | 37,048 |
| Less Outgoings | | | | | |
| Current Taxes on Income and Wealth | 3,356 | 2,267 | 2,795 | 2,983 | 5,257 |
| Social Contributions | 725 | 460 | 546 | 612 | 954 |
| Miscellaneous outgoing Current Transfers | 936 | 857 | 901 | 887 | 927 |
| Net Disposable Income | 31,713 | 32,314 | 31,267 | 31,794 | 29,910 |
| Social transfers in kind | 1,039 | 840 | 1,032 | 1,033 | 910 |
| Net Adjusted Disposable Income | 32,753 | 33,154 | 32,299 | 32,827 | 30,820 |

Table 14 - Income Components as a Percentage of Total Resources for Agricultural and Non-agricultural Households (1999-2000)

| Description | Agricultural Households | | | | Non-Agricultural Households |
|--|-------------------------|-------------------|-------------|-------------|-----------------------------|
| | Broad Definition | Narrow Definition | | | |
| | | Variant 1 | Variant 2 | Variant 3 | |
| Sample Households | 755 | 269 | 513 | 593 | 6,889 |
| Population (000) | 140.2 | 35.8 | 80.0 | 97.0 | 1,107.8 |
| Persons (000) | 525.7 | 118.9 | 280.9 | 348.1 | 3,358.0 |
| Consumer Units (000) | 384.9 | 87.7 | 209.6 | 258.3 | 2,532.8 |
| Income | % | % | % | % | % |
| Net Income from Independent Activity | 42.4 | 82.5 | 54.7 | 49.7 | 15.0 |
| of which | | | | | |
| Agricultural Activity | 31.0 | 74.5 | 45.4 | 38.8 | 0.1 |
| Non-agricultural Activity | 4.6 | 0.9 | 2.1 | 3.9 | 7.8 |
| Imputed Rent from Owner-occupied Dwellings | 6.9 | 7.1 | 7.2 | 7.0 | 7.2 |
| Compensation as Employees | 44.0 | 9.4 | 29.4 | 35.8 | 65.6 |
| Property Income Received | 2.1 | 1.7 | 3.1 | 2.7 | 1.5 |
| Social Benefits | 9.8 | 5.5 | 11.2 | 10.4 | 13.4 |
| Miscellaneous Inward Current Transfers | 1.7 | 0.9 | 1.6 | 1.5 | 4.4 |
| Gross Household Income | 100 | 100 | 100 | 100 | 100 |
| Less Outgoings | | | | | |
| Current Taxes on Income and Wealth | 9.1 | 6.3 | 7.9 | 8.2 | 14.2 |
| Social Contributions | 2.0 | 1.3 | 1.5 | 1.7 | 2.6 |
| Miscellaneous outgoing Current Transfers | 2.5 | 2.4 | 2.5 | 2.4 | 2.5 |
| Net Disposable Income | 86.3 | 90.0 | 88.1 | 87.6 | 80.7 |
| Social transfers in kind | 2.8 | 2.3 | 2.9 | 2.8 | 2.5 |
| Net Adjusted Disposable Income | 89.2 | 92.4 | 91.0 | 90.5 | 83.2 |

Table 15 - Income per Consumer Unit by Age of Head of Household (HOH) (1999-2000)

| Description | Agricultural Households | | | | | | | | | | | | Non-Agricultural Households | | |
|--|-------------------------|---------------|---------------|-------------------|---------------|---------------|---------------|---------------|---------------|---------------|---------------|---------------|-----------------------------|---------------|---------------|
| | Broad Definition | | | Narrow Definition | | | | | | | | | | | |
| | Age of HOH | | | Variant 1 | | | Variant 2 | | | Variant 3 | | | Age of HOH | | |
| | <35 | 35-64 | >= 65 | <35 | 35-64 | >= 65 | <35 | 35-64 | >= 65 | <35 | 35-64 | >= 65 | <35 | 35-64 | >= 65 |
| Sample Households | 44 | 575 | 136 | 16 | 215 | 38 | 23 | 382 | 108 | 28 | 454 | 111 | 1,133 | 4,062 | 1,694 |
| Population (000) | 7.8 | 107.3 | 25.1 | 2.1 | 28.3 | 5.4 | 3.1 | 56.7 | 20.2 | 4.4 | 71.8 | 20.8 | 186.0 | 657.4 | 264.4 |
| Persons (000) | 27.7 | 435.8 | 62.2 | 6.7 | 100.2 | 12.1 | 11.0 | 218.6 | 51.2 | 14.2 | 282.1 | 51.9 | 569.5 | 2,338.0 | 450.4 |
| Consumer Units (000) | 19.6 | 314.7 | 50.7 | 4.7 | 73.0 | 10.0 | 8.0 | 160.0 | 41.6 | 10.4 | 205.7 | 42.2 | 416.4 | 1,723.2 | 393.2 |
| Income | Euro | Euro | Euro | Euro | Euro | Euro | Euro | Euro | Euro | Euro | Euro | Euro | Euro | Euro | Euro |
| Net Income from Independent Activity | 8,693 | 5,271 | 6,978 | 13,397 | 11,980 | 12,256 | 10,106 | 7,581 | 6,249 | 9,058 | 6,600 | 7,017 | 1,265 | 2,718 | 2,436 |
| of which | | | | | | | | | | | | | | | |
| Agricultural Activity | 5,595 | 4,031 | 4,253 | 12,018 | 10,852 | 10,847 | 8,639 | 6,507 | 4,316 | 7,255 | 5,390 | 4,300 | 2 | 9 | 31 |
| Non-agricultural Activity | 2,222 | 362 | 1,519 | 354 | 120 | 72 | 529 | 155 | 758 | 871 | 311 | 1,516 | 963 | 1,570 | 204 |
| Imputed Rent from Owner-occupied Dwellings | 875 | 878 | 1,207 | 1,024 | 1,007 | 1,337 | 939 | 919 | 1,176 | 931 | 900 | 1,201 | 300 | 1,139 | 2,201 |
| Compensation as Employees | 7,108 | 6,122 | 3,960 | 3,518 | 1,318 | 809 | 5,374 | 3,975 | 3,728 | 6,704 | 5,028 | 3,672 | 13,405 | 11,870 | 2,254 |
| Property Income Received | 326 | 252 | 489 | 45 | 210 | 663 | 580 | 408 | 462 | 454 | 337 | 462 | 88 | 248 | 378 |
| Social Benefits | 1,091 | 1,072 | 2,849 | 653 | 715 | 1,552 | 1,075 | 1,220 | 2,779 | 1,136 | 1,155 | 2,755 | 1,363 | 1,552 | 5,770 |
| Miscellaneous Inward Current Transfers | 233 | 208 | 308 | 50 | 132 | 103 | 308 | 184 | 315 | 236 | 182 | 330 | 440 | 488 | 2,035 |
| Gross Household Income | 17,451 | 12,925 | 14,585 | 17,663 | 14,355 | 15,383 | 17,443 | 13,369 | 13,533 | 17,588 | 13,303 | 14,236 | 16,561 | 16,877 | 12,873 |
| Less Outgoings | | | | | | | | | | | | | | | |
| Current Taxes on Income and Wealth | 1,845 | 1,222 | 983 | 1,580 | 919 | 662 | 1,563 | 1,094 | 867 | 1,693 | 1,127 | 948 | 2,517 | 2,610 | 704 |
| Social Contributions | 399 | 265 | 202 | 476 | 178 | 120 | 428 | 203 | 188 | 419 | 228 | 191 | 559 | 457 | 94 |
| Miscellaneous outgoing Current Transfers | 403 | 333 | 365 | 347 | 372 | 190 | 388 | 339 | 355 | 538 | 318 | 355 | 295 | 423 | 449 |
| Net Disposable Income | 14,804 | 11,105 | 13,034 | 15,261 | 12,886 | 14,410 | 15,064 | 11,733 | 12,123 | 14,938 | 11,629 | 12,742 | 13,191 | 13,387 | 11,625 |
| Social transfers in kind | 327 | 360 | 510 | 305 | 330 | 455 | 370 | 369 | 496 | 368 | 367 | 497 | 363 | 388 | 481 |
| Net Adjusted Disposable Income | 15,131 | 11,466 | 13,544 | 15,566 | 13,216 | 14,865 | 15,434 | 12,102 | 12,619 | 15,306 | 11,996 | 13,239 | 13,554 | 13,775 | 12,106 |

Table 16 - Average Household Income by Age of Head of Household (HOH) (1999-2000)

| Description | Agricultural Households | | | | | | | | | | | | Non-Agricultural Households | | |
|--|-------------------------|---------------|---------------|-------------------|---------------|---------------|---------------|---------------|---------------|---------------|---------------|---------------|-----------------------------|---------------|---------------|
| | Broad Definition | | | Narrow Definition | | | | | | | | | | | |
| | | | | Variant 1 | | | Variant 2 | | | Variant 3 | | | | | |
| | Age of HOH | | | Age of HOH | | | Age of HOH | | | Age of HOH | | | Age of HOH | | |
| <35 | 35-64 | >= 65 | <35 | 35-64 | >= 65 | <35 | 35-64 | >= 65 | <35 | 35-64 | >= 65 | <35 | 35-64 | >= 65 | |
| Sample Households | 44 | 575 | 136 | 16 | 215 | 38 | 23 | 382 | 108 | 28 | 454 | 111 | 1,133 | 4,062 | 1,694 |
| Population (000) | 7.8 | 107.3 | 25.1 | 2.1 | 28.3 | 5.4 | 3.1 | 56.7 | 20.2 | 4.4 | 71.8 | 20.8 | 186.0 | 657.4 | 264.4 |
| Persons (000) | 27.7 | 435.8 | 62.2 | 6.7 | 100.2 | 12.1 | 11.0 | 218.6 | 51.2 | 14.2 | 282.1 | 51.9 | 569.5 | 2,338.0 | 450.4 |
| Consumer Units (000) | 19.6 | 314.7 | 50.7 | 4.7 | 73.0 | 10.0 | 8.0 | 160.0 | 41.6 | 10.4 | 205.7 | 42.2 | 416.4 | 1,723.2 | 393.2 |
| Income | Euro | Euro | Euro | Euro | Euro | Euro | Euro | Euro | Euro | Euro | Euro | Euro | Euro | Euro | Euro |
| Net Income from Independent Activity | 21,939 | 15,461 | 14,077 | 30,914 | 30,879 | 22,560 | 25,745 | 21,408 | 12,853 | 21,609 | 18,900 | 14,208 | 2,832 | 7,124 | 3,623 |
| of which | | | | | | | | | | | | | | | |
| Agricultural Activity | 14,121 | 11,823 | 8,579 | 27,732 | 27,974 | 19,966 | 22,008 | 18,374 | 8,876 | 17,309 | 15,433 | 8,706 | 4 | 23 | 46 |
| Non-agricultural Activity | 5,609 | 1,062 | 3,065 | 818 | 310 | 132 | 1,347 | 438 | 1,559 | 2,079 | 890 | 3,070 | 2,156 | 4,116 | 303 |
| Imputed Rent from Owner-occupied Dwellings | 2,210 | 2,577 | 2,434 | 2,364 | 2,596 | 2,461 | 2,391 | 2,595 | 2,418 | 2,222 | 2,577 | 2,431 | 672 | 2,985 | 3,274 |
| Compensation as Employees | 17,939 | 17,956 | 7,988 | 8,118 | 3,397 | 1,489 | 13,689 | 11,225 | 7,667 | 15,995 | 14,397 | 7,435 | 30,018 | 31,114 | 3,353 |
| Property Income Received | 823 | 739 | 986 | 104 | 541 | 1,220 | 1,478 | 1,153 | 951 | 1,082 | 966 | 935 | 198 | 651 | 562 |
| Social Benefits | 2,754 | 3,144 | 5,748 | 1,506 | 1,844 | 2,857 | 2,739 | 3,446 | 5,715 | 2,710 | 3,308 | 5,579 | 3,052 | 4,069 | 8,582 |
| Miscellaneous Inward Current Transfers | 589 | 611 | 622 | 115 | 341 | 189 | 783 | 520 | 649 | 564 | 522 | 668 | 984 | 1,279 | 3,026 |
| Gross Household Income | 44,044 | 37,913 | 29,421 | 40,758 | 37,003 | 28,316 | 44,435 | 37,752 | 27,835 | 41,960 | 38,093 | 28,826 | 37,084 | 44,237 | 19,145 |
| Less Outgoings | | | | | | | | | | | | | | | |
| Current Taxes on Income and Wealth | 4,656 | 3,583 | 1,984 | 3,646 | 2,368 | 1,219 | 3,982 | 3,090 | 1,783 | 4,038 | 3,227 | 1,919 | 5,636 | 6,842 | 1,048 |
| Social Contributions | 1,008 | 778 | 407 | 1,097 | 459 | 221 | 1,089 | 573 | 386 | 1,000 | 654 | 388 | 1,251 | 1,197 | 140 |
| Miscellaneous outgoing Current Transfers | 1,016 | 977 | 737 | 800 | 959 | 350 | 989 | 957 | 731 | 1,284 | 912 | 718 | 660 | 1,108 | 668 |
| Net Disposable Income | 37,364 | 32,574 | 26,293 | 35,215 | 33,217 | 26,526 | 38,375 | 33,133 | 24,935 | 35,638 | 33,300 | 25,801 | 29,537 | 35,090 | 17,290 |
| Social transfers in kind | 826 | 1,057 | 1,028 | 703 | 850 | 837 | 943 | 1,041 | 1,020 | 877 | 1,050 | 1,006 | 814 | 1,016 | 715 |
| Net Adjusted Disposable Income | 38,190 | 33,632 | 27,321 | 35,918 | 34,067 | 27,363 | 39,317 | 34,173 | 25,956 | 36,516 | 34,350 | 26,806 | 30,351 | 36,106 | 18,005 |

Table 17 - Income per Consumer Unit by Sex of Head of Household (HOH) (1999-2000)

| Description | Agricultural Households | | | | | | | | Non-Agricultural Households | |
|--|-------------------------|---------------|-------------------|---------------|---------------|---------------|---------------|---------------|-----------------------------|---------------|
| | Broad Definition | | Narrow Definition | | | | | | | |
| | | | Variant 1 | | Variant 2 | | Variant 3 | | | |
| | Sex of HOH | | Sex of HOH | | Sex of HOH | | Sex of HOH | | Sex of HOH | |
| | Male | Female | Male | Female | Male | Female | Male | Female | Male | Female |
| Sample Households | 667 | 88 | 242 | 27 | 491 | 22 | 567 | 26 | 4,745 | 2,144 |
| Population (000) | 125.8 | 14.4 | 32.4 | 3.4 | 76.6 | 3.4 | 92.6 | 4.5 | 738.4 | 369.3 |
| Persons (000) | 477.5 | 48.2 | 108.7 | 10.2 | 272.6 | 8.3 | 337.8 | 10.4 | 2,464.3 | 893.7 |
| Consumer Units (000) | 349.4 | 35.6 | 80.0 | 7.7 | 202.8 | 6.8 | 249.8 | 8.5 | 1,834.4 | 698.4 |
| Income | Euro | Euro | Euro | Euro | Euro | Euro | Euro | Euro | Euro | Euro |
| Net Income from Independent Activity | 5,613 | 6,223 | 12,029 | 12,699 | 7,416 | 7,336 | 6,747 | 7,356 | 2,605 | 1,989 |
| of which | | | | | | | | | | |
| Agricultural Activity | 4,129 | 4,246 | 10,871 | 11,373 | 6,176 | 5,487 | 5,302 | 4,827 | 14 | 4 |
| Non-agricultural Activity | 578 | 909 | 122 | 178 | 284 | 451 | 510 | 1,126 | 1,479 | 678 |
| Imputed Rent from Owner-occupied Dwellings | 907 | 1,068 | 1,036 | 1,148 | 956 | 1,399 | 935 | 1,402 | 1,112 | 1,307 |
| Compensation as Employees | 5,887 | 5,892 | 1,373 | 1,438 | 3,875 | 7,111 | 4,806 | 6,857 | 11,288 | 8,901 |
| Property Income Received | 267 | 484 | 215 | 648 | 390 | 1,495 | 333 | 1,235 | 280 | 143 |
| Social Benefits | 1,286 | 1,512 | 772 | 1,173 | 1,529 | 1,381 | 1,418 | 1,360 | 1,905 | 2,888 |
| Miscellaneous Inward Current Transfers | 213 | 317 | 111 | 264 | 212 | 314 | 207 | 251 | 681 | 824 |
| Gross Household Income | 13,266 | 14,428 | 14,500 | 16,222 | 13,420 | 17,636 | 13,511 | 17,058 | 16,758 | 14,745 |
| Less Outgoings | | | | | | | | | | |
| Current Taxes on Income and Wealth | 1,236 | 1,084 | 959 | 569 | 1,059 | 1,301 | 1,115 | 1,275 | 2,517 | 1,726 |
| Social Contributions | 262 | 277 | 187 | 191 | 205 | 307 | 227 | 308 | 455 | 319 |
| Miscellaneous outgoing Current Transfers | 330 | 443 | 334 | 509 | 336 | 584 | 326 | 539 | 426 | 351 |
| Net Disposable Income | 11,437 | 12,623 | 13,019 | 14,953 | 11,820 | 15,444 | 11,842 | 14,936 | 13,360 | 12,349 |
| Social transfers in kind | 376 | 399 | 334 | 432 | 391 | 489 | 386 | 464 | 395 | 407 |
| Net Adjusted Disposable Income | 11,814 | 13,022 | 13,353 | 15,385 | 12,211 | 15,933 | 12,228 | 15,400 | 13,755 | 12,756 |

Table 18 - Average Household Income by Sex of Head of Household (HOH) (1999-2000)

| Description | Agricultural Households | | | | | | | | Non-Agricultural Households | |
|--|-------------------------|---------------|-------------------|---------------|---------------|---------------|---------------|---------------|-----------------------------|---------------|
| | Broad Definition | | Narrow Definition | | | | | | | |
| | | | Variant 1 | | Variant 2 | | Variant 3 | | | |
| | Sex of HOH | | Sex of HOH | | Sex of HOH | | Sex of HOH | | Sex of HOH | |
| | Male | Female | Male | Female | Male | Female | Male | Female | Male | Female |
| Sample Households | 667 | 88 | 242 | 27 | 491 | 22 | 567 | 26 | 4,745 | 2,144 |
| Population (000) | 125.8 | 14.4 | 32.4 | 3.4 | 76.6 | 3.4 | 92.6 | 4.5 | 738.4 | 369.3 |
| Persons (000) | 477.5 | 48.2 | 108.7 | 10.2 | 272.6 | 8.3 | 337.8 | 10.4 | 2,464.3 | 893.7 |
| Consumer Units (000) | 349.4 | 35.6 | 80.0 | 7.7 | 202.8 | 6.8 | 249.8 | 8.5 | 1,834.4 | 698.4 |
| Income | Euro | Euro | Euro | Euro | Euro | Euro | Euro | Euro | Euro | Euro |
| Net Income from Independent Activity | 15,591 | 15,400 | 29,728 | 28,560 | 19,639 | 14,484 | 18,209 | 13,968 | 6,472 | 3,762 |
| of which | | | | | | | | | | |
| Agricultural Activity | 11,467 | 10,508 | 26,866 | 25,578 | 16,355 | 10,833 | 14,309 | 9,166 | 34 | 8 |
| Non-agricultural Activity | 1,606 | 2,249 | 302 | 401 | 751 | 890 | 1,376 | 2,139 | 3,674 | 1,283 |
| Imputed Rent from Owner-occupied Dwellings | 2,518 | 2,644 | 2,560 | 2,581 | 2,533 | 2,762 | 2,523 | 2,663 | 2,763 | 2,471 |
| Compensation as Employees | 16,350 | 14,582 | 3,393 | 3,234 | 10,261 | 14,039 | 12,971 | 13,021 | 28,040 | 16,833 |
| Property Income Received | 741 | 1,199 | 531 | 1,457 | 1,032 | 2,951 | 898 | 2,345 | 695 | 271 |
| Social Benefits | 3,572 | 3,743 | 1,909 | 2,637 | 4,048 | 2,726 | 3,826 | 2,583 | 4,732 | 5,461 |
| Miscellaneous Inward Current Transfers | 592 | 783 | 275 | 594 | 560 | 619 | 559 | 477 | 1,691 | 1,559 |
| Gross Household Income | 36,847 | 35,707 | 35,836 | 36,483 | 35,540 | 34,818 | 36,463 | 32,393 | 41,630 | 27,886 |
| Less Outgoings | | | | | | | | | | |
| Current Taxes on Income and Wealth | 3,433 | 2,684 | 2,371 | 1,280 | 2,805 | 2,569 | 3,010 | 2,421 | 6,253 | 3,265 |
| Social Contributions | 729 | 687 | 463 | 429 | 543 | 606 | 613 | 585 | 1,129 | 603 |
| Miscellaneous outgoing Current Transfers | 918 | 1,096 | 827 | 1,145 | 890 | 1,152 | 880 | 1,024 | 1,059 | 664 |
| Net Disposable Income | 31,767 | 31,240 | 32,175 | 33,629 | 31,302 | 30,491 | 31,959 | 28,364 | 33,188 | 23,354 |
| Social transfers in kind | 1,045 | 986 | 826 | 971 | 1,035 | 966 | 1,040 | 880 | 981 | 769 |
| Net Adjusted Disposable Income | 32,813 | 32,227 | 33,001 | 34,600 | 32,337 | 31,457 | 33,000 | 29,244 | 34,169 | 24,123 |

Table 19 - Income per Consumer Unit where Chief Economic Supporter (CES) = Head of Household (HOH) (1999-2000)

| Description | CES = HOH | | | | | Non-Agricultural Households |
|--|------------------|-------------------|---------------|---------------|---------------|-----------------------------|
| | Broad Definition | Narrow Definition | | | | |
| | | Variant 1 | Variant 2 | Variant 3 | | |
| Sample Households | 536 | 244 | 371 | 438 | 5,465 | |
| Population (000) | 99.3 | 32.8 | 56.4 | 70.8 | 865.3 | |
| Persons (000) | 356.7 | 109.0 | 185.1 | 242.2 | 2,465.2 | |
| Consumer Units (000) | 261.8 | 80.4 | 138.6 | 179.6 | 1,866.3 | |
| Income | Euro | Euro | Euro | Euro | Euro | |
| Net Income from Independent Activity | 6,289 | 12,038 | 8,942 | 7,807 | 2,631 | |
| of which | | | | | | |
| Agricultural Activity | 4,778 | 10,893 | 7,802 | 6,384 | 7 | |
| Non-agricultural Activity | 574 | 103 | 119 | 441 | 1,381 | |
| Imputed Rent from Owner-occupied Dwellings | 937 | 1,042 | 1,021 | 982 | 1,244 | |
| Compensation as Employees | 4,920 | 1,395 | 2,421 | 3,767 | 10,070 | |
| Property Income Received | 329 | 216 | 527 | 428 | 287 | |
| Social Benefits | 1,226 | 751 | 1,494 | 1,382 | 2,229 | |
| Miscellaneous Inward Current Transfers | 204 | 83 | 172 | 171 | 776 | |
| Gross Household Income | 12,968 | 14,483 | 13,555 | 13,556 | 15,993 | |
| Less Outgoings | | | | | | |
| Current Taxes on Income and Wealth | 1,025 | 961 | 946 | 1,017 | 2,247 | |
| Social Contributions | 232 | 189 | 173 | 201 | 397 | |
| Miscellaneous outgoing Current Transfers | 339 | 333 | 346 | 330 | 412 | |
| Net Disposable Income | 11,372 | 13,001 | 12,089 | 12,008 | 12,937 | |
| Social transfers in kind | 355 | 337 | 371 | 367 | 385 | |
| Net Adjusted Disposable Income | 11,727 | 13,337 | 12,461 | 12,375 | 13,322 | |

Table 20 - Average Household Income where Chief Economic Supporter (CES) = Head of Household (HOH) (1999-2000)

| Description | CES = HOH | | | | |
|--|------------------|-------------------|---------------|---------------|-----------------------------|
| | Broad Definition | Narrow Definition | | | Non-Agricultural Households |
| | | Variant 1 | Variant 2 | Variant 3 | |
| Sample Households | 536 | 244 | 371 | 438 | 5,465 |
| Population (000) | 99.3 | 32.8 | 56.4 | 70.8 | 865.3 |
| Persons (000) | 356.7 | 109.0 | 185.1 | 242.2 | 2,465.2 |
| Consumer Units (000) | 261.8 | 80.4 | 138.6 | 179.6 | 1,866.3 |
| Income | Euro | Euro | Euro | Euro | Euro |
| Net Income from Independent Activity | 16,576 | 29,530 | 21,981 | 19,816 | 5,675 |
| of which | | | | | |
| Agricultural Activity | 12,595 | 26,721 | 19,179 | 16,205 | 15 |
| Non-agricultural Activity | 1,512 | 253 | 292 | 1,118 | 2,978 |
| Imputed Rent from Owner-occupied Dwellings | 2,470 | 2,556 | 2,510 | 2,493 | 2,683 |
| Compensation as Employees | 12,969 | 3,423 | 5,951 | 9,561 | 21,719 |
| Property Income Received | 867 | 530 | 1,294 | 1,087 | 618 |
| Social Benefits | 3,232 | 1,842 | 3,673 | 3,508 | 4,808 |
| Miscellaneous Inward Current Transfers | 538 | 204 | 423 | 435 | 1,675 |
| Gross Household Income | 34,182 | 35,528 | 33,322 | 34,408 | 34,494 |
| Less Outgoings | | | | | |
| Current Taxes on Income and Wealth | 2,703 | 2,358 | 2,327 | 2,581 | 4,847 |
| Social Contributions | 611 | 463 | 425 | 510 | 856 |
| Miscellaneous outgoing Current Transfers | 893 | 816 | 851 | 838 | 888 |
| Net Disposable Income | 29,976 | 31,891 | 29,719 | 30,479 | 27,904 |
| Social transfers in kind | 936 | 826 | 913 | 930 | 830 |
| Net Adjusted Disposable Income | 30,912 | 32,717 | 30,632 | 31,409 | 28,733 |

Table 21 - Aggregate Income for Agricultural and Non-agricultural Households (1994-1995)

| Description | Agricultural Households | | | | Non-Agricultural Households |
|--|-------------------------|---------------------|---------------------|---------------------|-----------------------------|
| | Broad Definition | Narrow Definition | | | |
| | | Variant 1 | Variant 2 | Variant 3 | |
| Sample Households | 870 | 427 | 667 | 756 | 7007 |
| Population (000) | 151.9 | 59.4 | 110.3 | 129.6 | 913.2 |
| Persons (000) | 555.9 | 210.1 | 374.4 | 458.0 | 2948.5 |
| Consumer Units (000) | 409.2 | 153.5 | 279.0 | 338.7 | 2188.3 |
| Income | Million Euro | Million Euro | Million Euro | Million Euro | Million Euro |
| Net Income from Independent Activity | 2,047.6 | 1,385.0 | 1,670.1 | 1,844.6 | 3,431.6 |
| of which | | | | | |
| Agricultural Activity | 1,680.4 | 1,252.9 | 1,424.6 | 1,534.9 | 27.5 |
| Non-agricultural Activity | 93.1 | 21.1 | 48.2 | 76.3 | 1,586.4 |
| Imputed Rent from Owner-occupied Dwellings | 274.1 | 110.9 | 197.3 | 233.4 | 1,817.8 |
| Compensation as Employees | 1,287.9 | 126.7 | 480.1 | 897.1 | 13,559.1 |
| Property Income Received | 70.2 | 25.8 | 56.8 | 64.0 | 334.3 |
| Social Benefits | 474.4 | 90.5 | 364.5 | 400.6 | 3,948.7 |
| Miscellaneous Inward Current Transfers | 34.6 | 5.9 | 28.0 | 29.2 | 828.7 |
| Gross Household Income | 3,914.7 | 1,634.0 | 2,599.3 | 3,235.6 | 22,102.4 |
| Less Outgoings | | | | | |
| Current Taxes on Income and Wealth | 319.3 | 95.3 | 177.3 | 249.0 | 3,069.1 |
| Social Contributions | 84.7 | 22.7 | 42.3 | 64.6 | 786.9 |
| Miscellaneous outgoing Current Transfers | 100.3 | 37.3 | 58.4 | 81.5 | 537.2 |
| Net Disposable Income | 3,410.4 | 1,478.7 | 2,321.4 | 2,840.4 | 17,709.2 |
| Social transfers in kind | 116.4 | 39.0 | 81.0 | 96.1 | 676.6 |
| Net Adjusted Disposable Income | 3,526.8 | 1,517.6 | 2,402.4 | 2,936.5 | 18,385.8 |

Table 22 - Income per Consumer Unit for Agricultural and Non-agricultural Households (1994-1995)

| Description | Agricultural Households | | | | Non-Agricultural Households |
|--|-------------------------|-------------------|--------------|--------------|-----------------------------|
| | Broad Definition | Narrow Definition | | | |
| | | Variant 1 | Variant 2 | Variant 3 | |
| Sample Households | 870 | 427 | 667 | 756 | 7007 |
| Population (000) | 151.9 | 59.4 | 110.3 | 129.6 | 913.2 |
| Persons (000) | 555.9 | 210.1 | 374.4 | 458.0 | 2948.5 |
| Consumer Units (000) | 409.2 | 153.5 | 279.0 | 338.7 | 2188.3 |
| Income | Euro | Euro | Euro | Euro | Euro |
| Net Income from Independent Activity | 5,004 | 9,021 | 5,986 | 5,446 | 1,568 |
| of which | | | | | |
| Agricultural Activity | 4,107 | 8,161 | 5,106 | 4,531 | 13 |
| Non-agricultural Activity | 228 | 138 | 173 | 225 | 725 |
| Imputed Rent from Owner-occupied Dwellings | 670 | 723 | 707 | 689 | 831 |
| Compensation as Employees | 3,148 | 825 | 1,721 | 2,648 | 6,196 |
| Property Income Received | 172 | 168 | 203 | 189 | 153 |
| Social Benefits | 1,159 | 590 | 1,306 | 1,183 | 1,804 |
| Miscellaneous Inward Current Transfers | 85 | 39 | 100 | 86 | 379 |
| Gross Household Income | 9,568 | 10,643 | 9,316 | 9,552 | 10,100 |
| Less Outgoings | | | | | |
| Current Taxes on Income and Wealth | 780 | 621 | 635 | 735 | 1,402 |
| Social Contributions | 207 | 148 | 152 | 191 | 360 |
| Miscellaneous outgoing Current Transfers | 245 | 243 | 209 | 241 | 246 |
| Net Disposable Income | 8,335 | 9,631 | 8,320 | 8,386 | 8,093 |
| Social transfers in kind | 285 | 254 | 290 | 284 | 309 |
| Net Adjusted Disposable Income | 8,620 | 9,885 | 8,611 | 8,669 | 8,402 |

Table 23 - Average Household Income for Agricultural and Non-agricultural Households (1994-1995)

| Description | Agricultural Households | | | | Non-Agricultural Households |
|--|-------------------------|-------------------|---------------|---------------|-----------------------------|
| | Broad Definition | Narrow Definition | | | |
| | | Variant 1 | Variant 2 | Variant 3 | |
| Sample Households | 870 | 427 | 667 | 756 | 7007 |
| Population (000) | 151.9 | 59.4 | 110.3 | 129.6 | 913.2 |
| Persons (000) | 555.9 | 210.1 | 374.4 | 458.0 | 2948.5 |
| Consumer Units (000) | 409.2 | 153.5 | 279.0 | 338.7 | 2188.3 |
| Income | Euro | Euro | Euro | Euro | Euro |
| Net Income from Independent Activity | 13,477 | 23,306 | 15,143 | 14,229 | 3,758 |
| of which | | | | | |
| Agricultural Activity | 11,060 | 21,084 | 12,917 | 11,840 | 30 |
| Non-agricultural Activity | 613 | 356 | 437 | 589 | 1,737 |
| Imputed Rent from Owner-occupied Dwellings | 1,804 | 1,867 | 1,789 | 1,801 | 1,991 |
| Compensation as Employees | 8,477 | 2,132 | 4,353 | 6,920 | 14,848 |
| Property Income Received | 462 | 435 | 515 | 494 | 366 |
| Social Benefits | 3,122 | 1,523 | 3,305 | 3,090 | 4,324 |
| Miscellaneous Inward Current Transfers | 228 | 100 | 253 | 225 | 907 |
| Gross Household Income | 25,766 | 27,497 | 23,569 | 24,959 | 24,204 |
| Less Outgoings | | | | | |
| Current Taxes on Income and Wealth | 2,101 | 1,604 | 1,607 | 1,921 | 3,361 |
| Social Contributions | 558 | 383 | 383 | 498 | 862 |
| Miscellaneous outgoing Current Transfers | 660 | 627 | 529 | 629 | 588 |
| Net Disposable Income | 22,447 | 24,883 | 21,049 | 21,911 | 19,393 |
| Social transfers in kind | 766 | 656 | 735 | 741 | 741 |
| Net Adjusted Disposable Income | 23,213 | 25,538 | 21,783 | 22,653 | 20,134 |

Table 24 - Income Components as a Percentage of Total Resources for Agricultural and Non-agricultural Households (1994-1995)

| Description | Agricultural Households | | | | Non-Agricultural Households |
|--|-------------------------|-------------------|-------------|-------------|-----------------------------|
| | Broad Definition | Narrow Definition | | | |
| | | Variant 1 | Variant 2 | Variant 3 | |
| Sample Households | 870 | 427 | 667 | 756 | 7007 |
| Population (000) | 151.9 | 59.4 | 110.3 | 129.6 | 913.2 |
| Persons (000) | 555.9 | 210.1 | 374.4 | 458.0 | 2948.5 |
| Consumer Units (000) | 409.2 | 153.5 | 279.0 | 338.7 | 2188.3 |
| Income | % | % | % | % | % |
| Net Income from Independent Activity | 52.3 | 84.8 | 64.3 | 57.0 | 15.5 |
| of which | | | | | |
| Agricultural Activity | 42.9 | 76.7 | 54.8 | 47.4 | 0.1 |
| Non-agricultural Activity | 2.4 | 1.3 | 1.9 | 2.4 | 7.2 |
| Imputed Rent from Owner-occupied Dwellings | 7.0 | 6.8 | 7.6 | 7.2 | 8.2 |
| Compensation as Employees | 32.9 | 7.8 | 18.5 | 27.7 | 61.3 |
| Property Income Received | 1.8 | 1.6 | 2.2 | 2.0 | 1.5 |
| Social Benefits | 12.1 | 5.5 | 14.0 | 12.4 | 17.9 |
| Miscellaneous Inward Current Transfers | 0.9 | 0.4 | 1.1 | 0.9 | 3.7 |
| Gross Household Income | 100 | 100 | 100 | 100 | 100 |
| Less Outgoings | | | | | |
| Current Taxes on Income and Wealth | 8.2 | 5.8 | 6.8 | 7.7 | 13.9 |
| Social Contributions | 2.2 | 1.4 | 1.6 | 2.0 | 3.6 |
| Miscellaneous outgoing Current Transfers | 2.6 | 2.3 | 2.2 | 2.5 | 2.4 |
| Net Disposable Income | 87.1 | 90.5 | 89.3 | 87.8 | 80.1 |
| Social transfers in kind | 3.0 | 2.4 | 3.1 | 3.0 | 3.1 |
| Net Adjusted Disposable Income | 90.1 | 92.9 | 92.4 | 90.8 | 83.2 |

Table 25 - Income per Consumer Unit by Age of Head of Household (HOH) (1994-1995)

| Description | Agricultural Households | | | | | | | | | | | | Non-Agricultural Households | | |
|--|-------------------------|--------------|--------------|-------------------|---------------|---------------|--------------|--------------|--------------|---------------|--------------|--------------|-----------------------------|---------------|--------------|
| | Broad Definition | | | Narrow Definition | | | | | | | | | | | |
| | | | | Variant 1 | | | Variant 2 | | | Variant 3 | | | | | |
| | Age of HOH | | | Age of HOH | | | Age of HOH | | | Age of HOH | | | Age of HOH | | |
| | <35 | 35-64 | >= 65 | <35 | 35-64 | >= 65 | <35 | 35-64 | >= 65 | <35 | 35-64 | >= 65 | <35 | 35-64 | >= 65 |
| Sample Households | 56 | 630 | 184 | 30 | 325 | 72 | 41 | 465 | 161 | 54 | 538 | 164 | 1,418 | 3,832 | 1,757 |
| Population (000) | 9.1 | 107.7 | 35.1 | 3.8 | 45.4 | 10.2 | 6.2 | 72.8 | 31.3 | 8.8 | 88.9 | 32.0 | 173.0 | 519.8 | 220.4 |
| Persons (000) | 32.5 | 440.2 | 83.3 | 13.3 | 173.8 | 23.0 | 22.4 | 278.7 | 73.3 | 30.8 | 352.6 | 74.5 | 546.6 | 2,011.1 | 390.8 |
| Consumer Units (000) | 23.5 | 317.2 | 68.4 | 9.5 | 125.0 | 19.0 | 16.2 | 202.5 | 60.3 | 22.4 | 255.0 | 61.4 | 392.2 | 1,457.9 | 338.2 |
| Income | Euro | Euro | Euro | Euro | Euro | Euro | Euro | Euro | Euro | Euro | Euro | Euro | Euro | Euro | Euro |
| Net Income from Independent Activity | 5,147 | 5,077 | 4,620 | 8,679 | 9,000 | 9,328 | 6,132 | 6,350 | 4,725 | 5,070 | 5,660 | 4,695 | 932 | 1,699 | 1,742 |
| of which | | | | | | | | | | | | | | | |
| Agricultural Activity | 4,468 | 4,188 | 3,607 | 7,791 | 8,166 | 8,313 | 5,435 | 5,494 | 3,713 | 4,452 | 4,745 | 3,672 | 6 | 13 | 17 |
| Non-agricultural Activity | 110 | 264 | 99 | 237 | 145 | 41 | 39 | 205 | 101 | 33 | 272 | 100 | 613 | 867 | 244 |
| Imputed Rent from Owner-occupied Dwellings | 569 | 625 | 914 | 651 | 690 | 974 | 659 | 650 | 910 | 585 | 642 | 924 | 313 | 819 | 1,481 |
| Compensation as Employees | 4,567 | 3,302 | 1,946 | 832 | 871 | 520 | 1,839 | 1,789 | 1,459 | 4,710 | 2,724 | 1,582 | 7,994 | 6,813 | 1,454 |
| Property Income Received | 153 | 154 | 259 | 297 | 152 | 215 | 154 | 194 | 249 | 156 | 174 | 262 | 50 | 140 | 329 |
| Social Benefits | 1,273 | 871 | 2,459 | 884 | 545 | 733 | 1,435 | 950 | 2,469 | 1,311 | 863 | 2,463 | 1,267 | 1,346 | 4,406 |
| Miscellaneous Inward Current Transfers | 79 | 65 | 178 | 41 | 34 | 67 | 115 | 76 | 176 | 83 | 66 | 173 | 335 | 241 | 1,022 |
| Gross Household Income | 11,220 | 9,468 | 9,463 | 10,734 | 10,603 | 10,862 | 9,676 | 9,359 | 9,078 | 11,330 | 9,487 | 9,174 | 10,578 | 10,238 | 8,952 |
| Less Outgoings | | | | | | | | | | | | | | | |
| Current Taxes on Income and Wealth | 1,144 | 787 | 625 | 718 | 609 | 653 | 797 | 657 | 520 | 1,157 | 744 | 545 | 1,659 | 1,550 | 471 |
| Social Contributions | 301 | 215 | 139 | 119 | 162 | 69 | 162 | 163 | 109 | 315 | 197 | 118 | 483 | 390 | 86 |
| Miscellaneous outgoing Current Transfers | 248 | 244 | 252 | 161 | 236 | 328 | 125 | 201 | 258 | 258 | 235 | 259 | 168 | 254 | 297 |
| Net Disposable Income | 9,527 | 8,223 | 8,447 | 9,737 | 9,595 | 9,813 | 8,592 | 8,337 | 8,190 | 9,601 | 8,311 | 8,254 | 8,267 | 8,044 | 8,099 |
| Social transfers in kind | 310 | 260 | 390 | 271 | 235 | 367 | 297 | 261 | 386 | 310 | 257 | 386 | 294 | 283 | 439 |
| Net Adjusted Disposable Income | 9,837 | 8,483 | 8,837 | 10,008 | 9,831 | 10,180 | 8,889 | 8,599 | 8,576 | 9,911 | 8,568 | 8,640 | 8,561 | 8,327 | 8,538 |

Table 26 - Average Household Income by Age of Head of Household (1994-1995)

| Description | Agricultural Households | | | | | | | | | | | | Non-Agricultural Households | | |
|--|-------------------------|---------------|---------------|-------------------|---------------|---------------|---------------|---------------|---------------|---------------|---------------|---------------|-----------------------------|---------------|---------------|
| | Broad Definition | | | Narrow Definition | | | | | | | | | | | |
| | | | | Variant 1 | | | Variant 2 | | | Variant 3 | | | | | |
| | Age of HOH | | | Age of HOH | | | Age of HOH | | | Age of HOH | | | Age of HOH | | |
| <35 | 35-64 | >= 65 | <35 | 35-64 | >= 65 | <35 | 35-64 | >= 65 | <35 | 35-64 | >= 65 | <35 | 35-64 | >= 65 | |
| Sample Households | 56 | 630 | 184 | 30 | 325 | 72 | 41 | 465 | 161 | 54 | 538 | 164 | 1,418 | 3,832 | 1,757 |
| Population (000) | 9.1 | 107.7 | 35.1 | 3.8 | 45.4 | 10.2 | 6.2 | 72.8 | 31.3 | 8.8 | 88.9 | 32.0 | 173.0 | 519.8 | 220.4 |
| Persons (000) | 32.5 | 440.2 | 83.3 | 13.3 | 173.8 | 23.0 | 22.4 | 278.7 | 73.3 | 30.8 | 352.6 | 74.5 | 546.6 | 2,011.1 | 390.8 |
| Consumer Units (000) | 23.5 | 317.2 | 68.4 | 9.5 | 125.0 | 19.0 | 16.2 | 202.5 | 60.3 | 22.4 | 255.0 | 61.4 | 392.2 | 1,457.9 | 338.2 |
| Income | Euro | Euro | Euro | Euro | Euro | Euro | Euro | Euro | Euro | Euro | Euro | Euro | Euro | Euro | Euro |
| Net Income from Independent Activity | 13,232 | 14,951 | 9,016 | 21,872 | 24,759 | 17,378 | 16,036 | 17,657 | 9,112 | 12,918 | 16,232 | 9,020 | 2,114 | 4,765 | 2,674 |
| of which | | | | | | | | | | | | | | | |
| Agricultural Activity | 11,486 | 12,334 | 7,038 | 19,633 | 22,463 | 15,487 | 14,212 | 15,279 | 7,162 | 11,343 | 13,609 | 7,054 | 14 | 37 | 25 |
| Non-agricultural Activity | 283 | 777 | 194 | 598 | 399 | 76 | 101 | 570 | 196 | 84 | 781 | 192 | 1,390 | 2,431 | 374 |
| Imputed Rent from Owner-occupied Dwellings | 1,463 | 1,840 | 1,784 | 1,642 | 1,897 | 1,815 | 1,723 | 1,809 | 1,755 | 1,491 | 1,841 | 1,774 | 710 | 2,297 | 2,274 |
| Compensation as Employees | 11,741 | 9,724 | 3,798 | 2,098 | 2,397 | 969 | 4,811 | 4,975 | 2,814 | 12,001 | 7,813 | 3,039 | 18,122 | 19,107 | 2,231 |
| Property Income Received | 393 | 454 | 506 | 748 | 417 | 400 | 404 | 539 | 480 | 399 | 500 | 503 | 113 | 391 | 505 |
| Social Benefits | 3,274 | 2,564 | 4,798 | 2,228 | 1,500 | 1,366 | 3,754 | 2,640 | 4,762 | 3,340 | 2,476 | 4,732 | 2,871 | 3,774 | 6,762 |
| Miscellaneous Inward Current Transfers | 204 | 191 | 347 | 103 | 94 | 124 | 300 | 213 | 339 | 212 | 188 | 332 | 759 | 677 | 1,568 |
| Gross Household Income | 28,842 | 27,883 | 18,465 | 27,049 | 29,167 | 20,237 | 25,305 | 26,024 | 17,507 | 28,870 | 27,209 | 17,625 | 23,979 | 28,714 | 13,741 |
| Less Outgoings | | | | | | | | | | | | | | | |
| Current Taxes on Income and Wealth | 2,941 | 2,317 | 1,219 | 1,809 | 1,675 | 1,216 | 2,084 | 1,826 | 1,004 | 2,948 | 2,134 | 1,046 | 3,762 | 4,346 | 722 |
| Social Contributions | 773 | 633 | 271 | 299 | 447 | 128 | 423 | 454 | 210 | 803 | 566 | 226 | 1,095 | 1,093 | 132 |
| Miscellaneous outgoing Current Transfers | 637 | 717 | 491 | 406 | 649 | 611 | 328 | 560 | 498 | 656 | 674 | 497 | 382 | 714 | 455 |
| Net Disposable Income | 24,491 | 24,216 | 16,483 | 24,536 | 26,396 | 18,281 | 22,469 | 23,184 | 15,795 | 24,464 | 23,835 | 15,856 | 18,741 | 22,561 | 12,432 |
| Social transfers in kind | 797 | 766 | 761 | 684 | 647 | 684 | 778 | 727 | 744 | 789 | 737 | 742 | 666 | 794 | 674 |
| Net Adjusted Disposable Income | 25,288 | 24,981 | 17,244 | 25,220 | 27,043 | 18,965 | 23,247 | 23,910 | 16,540 | 25,252 | 24,572 | 16,598 | 19,407 | 23,355 | 13,106 |

Table 27 - Income per Consumer Unit by Sex of Head of Household (HOH) (1994-1995)

| Description | Agricultural Households | | | | | | | | Non-Agricultural Households | |
|--|-------------------------|--------------|-------------------|---------------|--------------|--------------|--------------|--------------|-----------------------------|--------------|
| | Broad Definition | | Narrow Definition | | | | | | | |
| | | | Variant 1 | | Variant 2 | | Variant 3 | | | |
| | Sex of HOH | | Sex of HOH | | Sex of HOH | | Sex of HOH | | Sex of HOH | |
| | Male | Female | Male | Female | Male | Female | Male | Female | Male | Female |
| Sample Households | 808 | 62 | 399 | 28 | 645 | 22 | 733 | 23 | 4,964 | 2,043 |
| Population (000) | 141.2 | 10.7 | 55.6 | 3.8 | 106.3 | 4.0 | 125.5 | 4.2 | 664.4 | 248.8 |
| Persons (000) | 523.8 | 32.1 | 199.7 | 10.4 | 364.9 | 9.5 | 448.3 | 9.7 | 2,384.1 | 564.4 |
| Consumer Units (000) | 384.2 | 25.0 | 145.3 | 8.3 | 271.2 | 7.8 | 330.8 | 8.0 | 1,742.6 | 445.7 |
| Income | Euro | Euro | Euro | Euro | Euro | Euro | Euro | Euro | Euro | Euro |
| Net Income from Independent Activity | 5,016 | 4,831 | 8,982 | 9,698 | 6,008 | 5,204 | 5,451 | 5,224 | 1,650 | 1,249 |
| of which | | | | | | | | | | |
| Agricultural Activity | 4,121 | 3,894 | 8,124 | 8,804 | 5,136 | 4,073 | 4,542 | 4,069 | 14 | 7 |
| Non-agricultural Activity | 230 | 194 | 140 | 99 | 168 | 344 | 223 | 336 | 835 | 294 |
| Imputed Rent from Owner-occupied Dwellings | 665 | 744 | 718 | 796 | 705 | 787 | 686 | 818 | 801 | 948 |
| Compensation as Employees | 3,177 | 2,693 | 846 | 452 | 1,716 | 1,890 | 2,664 | 2,006 | 6,446 | 5,220 |
| Property Income Received | 176 | 97 | 175 | 50 | 207 | 77 | 192 | 76 | 149 | 166 |
| Social Benefits | 1,132 | 1,587 | 578 | 798 | 1,296 | 1,668 | 1,169 | 1,735 | 1,612 | 2,555 |
| Miscellaneous Inward Current Transfers | 83 | 101 | 36 | 87 | 103 | 0 | 88 | 0 | 305 | 666 |
| Gross Household Income | 9,584 | 9,310 | 10,618 | 11,085 | 9,330 | 8,840 | 9,565 | 9,040 | 10,162 | 9,857 |
| Less Outgoings | | | | | | | | | | |
| Current Taxes on Income and Wealth | 788 | 657 | 636 | 366 | 635 | 640 | 737 | 667 | 1,460 | 1,176 |
| Social Contributions | 210 | 158 | 154 | 48 | 152 | 131 | 192 | 133 | 379 | 283 |
| Miscellaneous outgoing Current Transfers | 248 | 195 | 238 | 329 | 210 | 180 | 242 | 176 | 248 | 237 |
| Net Disposable Income | 8,337 | 8,299 | 9,591 | 10,343 | 8,333 | 7,889 | 8,393 | 8,064 | 8,075 | 8,161 |
| Social transfers in kind | 277 | 400 | 245 | 414 | 287 | 417 | 281 | 417 | 290 | 385 |
| Net Adjusted Disposable Income | 8,614 | 8,700 | 9,835 | 10,757 | 8,619 | 8,306 | 8,674 | 8,481 | 8,365 | 8,546 |

Table 28 - Average Household Income by Sex of Head of Household (HOH) (1994-1995)

| Description | Agricultural Households | | | | | | | | Non-Agricultural Households | |
|--|-------------------------|---------------|-------------------|---------------|---------------|---------------|---------------|---------------|-----------------------------|---------------|
| | Broad Definition | | Narrow Definition | | | | | | | |
| | | | Variant 1 | | Variant 2 | | Variant 3 | | | |
| | Sex of HOH | | Sex of HOH | | Sex of HOH | | Sex of HOH | | Sex of HOH | |
| Male | Female | Male | Female | Male | Female | Male | Female | Male | Female | |
| Sample Households | 808 | 62 | 399 | 28 | 645 | 22 | 733 | 23 | 4,964 | 2,043 |
| Population (000) | 141.2 | 10.7 | 55.6 | 3.8 | 106.3 | 4.0 | 125.5 | 4.2 | 664.4 | 248.8 |
| Persons (000) | 523.8 | 32.1 | 199.7 | 10.4 | 364.9 | 9.5 | 448.3 | 9.7 | 2,384.1 | 564.4 |
| Consumer Units (000) | 384.2 | 25.0 | 145.3 | 8.3 | 271.2 | 7.8 | 330.8 | 8.0 | 1,742.6 | 445.7 |
| Income | Euro | Euro | Euro | Euro | Euro | Euro | Euro | Euro | Euro | Euro |
| Net Income from Independent Activity | 13,643 | 11,289 | 23,465 | 21,000 | 15,331 | 10,137 | 14,371 | 9,968 | 4,327 | 2,238 |
| of which | | | | | | | | | | |
| Agricultural Activity | 11,208 | 9,099 | 21,222 | 19,062 | 13,105 | 7,934 | 11,976 | 7,764 | 37 | 13 |
| Non-agricultural Activity | 625 | 453 | 365 | 215 | 428 | 670 | 587 | 642 | 2,191 | 527 |
| Imputed Rent from Owner-occupied Dwellings | 1,809 | 1,738 | 1,877 | 1,723 | 1,798 | 1,532 | 1,809 | 1,562 | 2,100 | 1,698 |
| Compensation as Employees | 8,642 | 6,294 | 2,211 | 978 | 4,378 | 3,682 | 7,023 | 3,828 | 16,907 | 9,351 |
| Property Income Received | 480 | 227 | 457 | 107 | 528 | 151 | 506 | 145 | 392 | 298 |
| Social Benefits | 3,078 | 3,708 | 1,509 | 1,728 | 3,307 | 3,250 | 3,083 | 3,310 | 4,229 | 4,578 |
| Miscellaneous Inward Current Transfers | 227 | 237 | 94 | 188 | 263 | 0 | 233 | 0 | 800 | 1,194 |
| Gross Household Income | 26,070 | 21,755 | 27,737 | 24,002 | 23,807 | 17,219 | 25,216 | 17,250 | 26,655 | 17,658 |
| Less Outgoings | | | | | | | | | | |
| Current Taxes on Income and Wealth | 2,144 | 1,536 | 1,660 | 792 | 1,621 | 1,246 | 1,942 | 1,272 | 3,830 | 2,107 |
| Social Contributions | 572 | 370 | 402 | 103 | 388 | 256 | 506 | 254 | 995 | 507 |
| Miscellaneous outgoing Current Transfers | 676 | 456 | 621 | 712 | 536 | 350 | 639 | 335 | 649 | 425 |
| Net Disposable Income | 22,678 | 19,393 | 25,053 | 22,395 | 21,262 | 15,367 | 22,128 | 15,389 | 21,181 | 14,619 |
| Social transfers in kind | 754 | 935 | 639 | 897 | 732 | 813 | 740 | 796 | 760 | 689 |
| Net Adjusted Disposable Income | 23,431 | 20,329 | 25,692 | 23,292 | 21,994 | 16,180 | 22,868 | 16,185 | 21,941 | 15,308 |

Table 29 - Income per Consumer Unit where Chief Economic Supporter (CES) = Head of Household (HOH) (1994-1995)

| Description | CES = HOH | | | | |
|--|------------------|-------------------|--------------|--------------|-----------------------------|
| | Broad Definition | Narrow Definition | | | Non-Agricultural Households |
| | | Variant 1 | Variant 2 | Variant 3 | |
| Sample Households | 750 | 427 | 578 | 662 | 5,981 |
| Population (000) | 127.0 | 59.4 | 92.1 | 110.6 | 770.8 |
| Persons (000) | 456.9 | 210.1 | 306.7 | 387.0 | 2,423.5 |
| Consumer Units (000) | 335.9 | 153.5 | 228.6 | 286.0 | 1,797.9 |
| Income | Euro | Euro | Euro | Euro | Euro |
| Net Income from Independent Activity | 5,604 | 9,021 | 6,709 | 5,959 | 1,619 |
| of which | | | | | |
| Agricultural Activity | 4,680 | 8,161 | 5,812 | 5,022 | 11 |
| Non-agricultural Activity | 229 | 138 | 160 | 226 | 760 |
| Imputed Rent from Owner-occupied Dwellings | 695 | 723 | 737 | 711 | 847 |
| Compensation as Employees | 2,674 | 825 | 1,044 | 2,223 | 5,799 |
| Property Income Received | 177 | 168 | 205 | 188 | 165 |
| Social Benefits | 1,100 | 590 | 1,254 | 1,123 | 1,808 |
| Miscellaneous Inward Current Transfers | 77 | 39 | 90 | 77 | 386 |
| Gross Household Income | 9,633 | 10,643 | 9,303 | 9,570 | 9,777 |
| Less Outgoings | | | | | |
| Current Taxes on Income and Wealth | 705 | 621 | 541 | 666 | 1,320 |
| Social Contributions | 189 | 148 | 127 | 177 | 334 |
| Miscellaneous outgoing Current Transfers | 258 | 243 | 210 | 245 | 245 |
| Net Disposable Income | 8,481 | 9,631 | 8,425 | 8,483 | 7,878 |
| Social transfers in kind | 267 | 254 | 272 | 268 | 291 |
| Net Adjusted Disposable Income | 8,748 | 9,885 | 8,697 | 8,751 | 8,169 |

Table 30 - Average Household Income where Chief Economic Supporter (CES) = Head of Household (HOH) (1994-1995)

| Description | CES = HOH | | | | |
|--|------------------|-------------------|---------------|---------------|-----------------------------|
| | Broad Definition | Narrow Definition | | | Non-Agricultural Households |
| | | Variant 1 | Variant 2 | Variant 3 | |
| Sample Households | 750 | 427 | 578 | 662 | 5,981 |
| Population (000) | 127.0 | 59.4 | 92.1 | 110.6 | 770.8 |
| Persons (000) | 456.9 | 210.1 | 306.7 | 387.0 | 2,423.5 |
| Consumer Units (000) | 335.9 | 153.5 | 228.6 | 286.0 | 1,797.9 |
| Income | Euro | Euro | Euro | Euro | Euro |
| Net Income from Independent Activity | 14,826 | 23,306 | 16,643 | 15,403 | 3,776 |
| of which | | | | | |
| Agricultural Activity | 12,382 | 21,084 | 14,418 | 12,981 | 27 |
| Non-agricultural Activity | 606 | 356 | 397 | 584 | 1,773 |
| Imputed Rent from Owner-occupied Dwellings | 1,838 | 1,867 | 1,828 | 1,838 | 1,976 |
| Compensation as Employees | 7,074 | 2,132 | 2,590 | 5,747 | 13,528 |
| Property Income Received | 469 | 435 | 508 | 487 | 384 |
| Social Benefits | 2,911 | 1,523 | 3,111 | 2,904 | 4,217 |
| Miscellaneous Inward Current Transfers | 204 | 100 | 224 | 198 | 901 |
| Gross Household Income | 25,485 | 27,497 | 23,077 | 24,739 | 22,805 |
| Less Outgoings | | | | | |
| Current Taxes on Income and Wealth | 1,866 | 1,604 | 1,342 | 1,721 | 3,078 |
| Social Contributions | 500 | 383 | 316 | 456 | 780 |
| Miscellaneous outgoing Current Transfers | 681 | 627 | 520 | 632 | 572 |
| Net Disposable Income | 22,437 | 24,883 | 20,898 | 21,929 | 18,375 |
| Social transfers in kind | 705 | 656 | 676 | 693 | 679 |
| Net Adjusted Disposable Income | 23,143 | 25,538 | 21,574 | 22,622 | 19,054 |

Appendix 2

Definition of Income

The IAHS uses **net disposable income** as a measure of the income situation of households. The components include income from self-employment, income as an employee, imputed rent of owner-occupied dwellings and other property income, social benefits and non-life insurance claims. Net disposable income is calculated net of property income paid, income and wealth taxes, social contributions and non-life insurance premiums.

Net disposable income is made up of the following components:

1. Net operating surplus (mixed income) from independent activity
 - (a) From agricultural activity
 - (b) From non-agricultural activity
 - (c) From imputed rental value of owner-occupied dwellings
2. Compensation to members of agricultural households, as employees, from agricultural and non-agricultural activity
3. Property income received
4. Non-life insurance claims (personal and material damage)
5. Social benefits (other than social benefits in kind)
6. Miscellaneous inward current transfers
7. Gross Household Income (sum of 1 to 6)
8. Property income paid
9. Net non-life insurance premiums
10. Current taxes on income and wealth
11. Social contributions
12. Miscellaneous outgoing current transfers
13. Net disposable income (7 minus 8-12)
14. Social transfers in kind
15. Net adjusted disposable income (13 plus 14)

Resulting from the data available in the HBS, the following relationship between the HBS and IAHS can be established to calculate Net Disposable Income in the Irish context:

The following shows for each component of net disposable income, the corresponding HBS item(s).

1. Net operating surplus (mixed income) from independent activity

(a) from agricultural activity

This includes self-employed income from farming and the value of own garden/farm produce valued at retail prices.

(b) from non-agricultural activity

This includes self-employed non-farming income.

(c) from imputed rental value of owner occupied dwellings

The services of dwellings (if owner occupied or rent-free) are valued at the estimated rental value that a tenant would pay for the same accommodation, taking account of factors such as location, size of the dwelling etc. This item is presented net of interest paid.

Although the 2004-2005 HBS includes, for the first time, a value for imputed rent, the Eurostat manual indicates that estimates should be calculated according to the methodologies used in National Accounts. Thus, rather than using the HBS estimate, a separate calculation was performed in line with National Accounts methodology.

2. Compensation to members of agricultural households as employees

This includes all payments in cash and in kind received by members of agricultural households as employees in agricultural and non-agricultural activities. These include wages and salaries in cash and in kind, as well as employers' social contributions (both actual and imputed).

3. Property and entrepreneurial income received

This includes rent from land and associated farm buildings (excluding the rent of dwellings), net of maintenance expenses. This item also includes income from investments, stocks and shares, building societies etc.

4. Non-life Insurance Claims

Here, the simplifying assumption that claims and premiums cancel out on average, has been adopted.

5. Social Benefits

This source of income would, by and large, be covered by State Transfers and Retirement Pensions.

6. Miscellaneous inward current transfers

This includes pensions from other employment, and strike or sick pay.

7. Gross Household Income

Sum of Items 1 to 6 above.

8. Property Income Paid

Items 1(a) and 1(b) above are net of this component.

9. Net non-life Insurance Premiums

See item 4 above.

10. Current Taxes on Income and Wealth

This includes income tax, capital gains tax, health levy etc.

11. Social Contributions

This consists of social insurance payments made by the insured person. Employers' contributions and imputed social contributions are not included. See Item 2 above.

12. Miscellaneous outgoing current transfers

Items under this heading would include voluntary contributions to certain institutions, allowances to non-household members, trade union and professional association contributions etc.

Other outgoing transfers can be assumed to be relatively minor, and indeed, in the calculation of disposable income, would be offset by similar under-coverage of other current receipts.

13. Net Disposable Income

This is calculated as:

Gross Household Income – (sum of Items 8 to 12)

14. Social Transfers in Kind

These consist of individual goods and services provided as transfers in kind to households by government units and non-profit institutions serving households. Relevant items include the value of free fuel/fuel vouchers, free travel etc.

15. Net Adjusted Disposable Income

This equals Net disposable income plus Item 14 above.

Appendix 3

Grossing Methodology

The grossing procedure is in three stages:

- (1) A global raising factor equal to the total population of holdings (N) divided by the total number of sample households (n).
- (2) An adjustment factor to correct for differential representation of farming activity by farm size and type following the incorporation of the NFS households into the original HBS sample. This aligns the sample of all farming households in the HBS with the distribution of farms classified by size and type from the FSS (see Household Budget Survey 2004-2005 Appendix 3).

The factor applied to sample households in size band i and of type j is

$$A_{ij} = (N_{ij} / N) * (n / n_{ij})$$

where,

N_{ij} = number of farm holdings in size band i and of type j in the State

n_{ij} = number of farm holdings in size band i and of type j in the HBS sample

N = number of farms in the State (sum of N_{ij})

n = number of farm holdings in the HBS sample (sum of n_{ij})

Combining this factor with that in stage 1 gives a factor

$$G_{ij} = (N / n) * A_{ij}$$

- (3) A final multiplicative adjustment was applied to ensure that the grossed numbers of farms in each size group are the same as the corresponding FSS totals. This third factor is N_p/G_p where N_p is the number of farms in the State in size band p and G_p is the sum of G_{ij} for sample farms in size band p.

Appendix 4

**Strictly
Confidential**

(1)

| RECORD 1 | | |
|-------------|------|------|
| Ref. No. | Area | Hld. |
| | | |

(2-6)

Household Questionnaire (H.B.1)

Household Questionnaire (H.B.1)

| Q. 1 HOUSEHOLD MEMBERS | | Q. 2 RELATIONSHIP TO HEAD OF HOUSEHOLD | | Q. 3 SEX | Q. 4 AGE | Q. 5 MARITAL STATUS | Q. 6 HOSPITAL STAY | |
|------------------------------|------------------------|---|--------------------------|--------------------------------------|---|---------------------------------------|---|--------|
| PERSONAL NUMBER | Initials or Name | (e.g. wife, husband, brother, sister, son, daughter, father, mother, boarder, visitor etc.) | | Code 1 = male 2 = female | Age last birthday (0 = under 1 year) | Code 1 – 7 as shown below | Number of nights (enter 0 if none) spent during last 12 months in | |
| | | Office Use | State funded hospital | | | | Private Hospital | |
| | | | | Code | Age | Code | Nights | Nights |
| 01 | | Head of Household | | | | | | |
| 02 | | | | | | | | |
| 03 | | | | | | | | |
| 04 | | | | | | | | |
| 05 | | | | | | | | |
| 06 | | | | | | | | |
| 07 | | | | | | | | |
| 08 | | | | | | | | |
| 09 | | | | | | | | |
| 10 | | | | | | | | |

(7-8)

(11)

(12)

(13-14)

(15)

(16-18)

(19-21)



Q. 11 Has any member a normally resident unmarried son or daughter receiving fulltime 3rd level education away from home?
 If YES Y ask Q.1-4 and Q.9(b) for each
 If NO N ask Q. 12 on next page

| | | | | | |
|----|-------|-------|-------|-------|-------|
| X1 | | | | | |
| X2 | | | | | |
| X3 | | | | | |

(7-8)

(11)

(12)

(13-14)

MARITAL STATUS CODES (Q. 5)

Married

1. Both spouses present
2. One temporarily away (why?)
.....

3. One permanently away (i.e. separated)

4. Divorced
5. Widow / Widower

Single

6. 15 years and over
7. Under 15 years

ACCOMMODATION PARTICULARS (ASK ALL)

Code £/€ entries if records
 S – seen by interviewer
 C – consulted by respondent
 N – non consulted
 E – estimated

RECORD 2

TYPE

12. (a) Is your accommodation a _____ Bedsitter 1

 Apartment/flat
 converted
 custom built-large block . . . 3 (large = block of
 custom built-small block . . . 4 10 or more
 House apartments)
 detached 5
 semi-detached/terraced . . . 6
 Other (specify) 7
- (b) Year in which the accommodation was built
 pre - 1918 1
 1918 - 1945 2
 1946 - 1960 3
 1961 - 1970 4
 1971 - 1980 5
 1981 - 1990 6
 1991 - to date 7

| Amount | | Code |
|--------|-----|-------|
| £/€ | p/c | |
| 2 | | 001 1 |
| | | X01 1 |
| | | X02 1 |
| | | 002 1 |
| | | 003 1 |
| | | 022 1 |
| | | 023 1 |
| | | 024 1 |
| | | 025 1 |
| | | X03 1 |
| | | 026 1 |
| | | X04 1 |
| | | X14 1 |
| | | X05 1 |
| | | 566 |
| | | 566 |
| | | 004 1 |
| | | 005 1 |
| | | 006 1 |
| | | 007 1 |
| | | X06 1 |
| | | X07 1 |

AMENITIES

13. (a) How many rooms are there in your *whole* accommodation (i.e. rooms at this address which you own, rent or occupy rent free)?

| EXCLUDE | ENTER NO. |
|--------------------------------------|-----------|
| bathroom | |
| separate toilet | |
| scullery/kitchenette | |
| Garage <input type="checkbox"/> used | |
| <input type="checkbox"/> let/sub-let | |
| rooms used entirely for business | |
| others - specify | |
| | |

- ENTER NO.**
- living/dining rooms
 kitchen
 bedrooms →
 rooms shared
 rooms let or sub-let →
 rooms used *partly* for business
TOTAL NO. OF ROOMS →

- (b) Does this accommodation have
- | | | | | |
|--|---|---|-------|-------|
| running water (piped)? | 1 | 2 | | 022 1 |
| hot water (piped)? | 1 | 2 | | 023 1 |
| bath or shower? | 1 | 2 | | 024 1 |
| toilet (internal)? | 1 | 2 | | 025 1 |
| double glazing? | 1 | 2 | | X03 1 |
| garage <input type="checkbox"/> owned? | 1 | 3 | | 026 1 |
| <input type="checkbox"/> rented? | 2 | | | |
| burglar alarm? | 1 | 2 | | X04 1 |
| patio doors | 1 | 2 | | X14 1 |
- (c) Does any household member own touring caravan or tent trailer? 1 2 X05 1

ROOMS LET OR SUB-LET

14. (a) How much rent do you receive from your tenants? _____ Rooms
 (b) How long a period does this cover? Period (rooms) (garage) Garage
 (c) Apart from furniture, do you provide any service (e.g. light, heating etc.) for your tenants? YES Y
 NO N, ASK Q. 15

IF YES, give the following details

| Type of Service | Only if specific charge made | | | Included in rent at Q. 14 (a)? | |
|-----------------|------------------------------|--------|-----|--------------------------------|--|
| | Amount £/€ | Period | Yes | No | |
| | | | Y | N | |
| | | | Y | N | |
| | | | Y | N | |

- Date 004 1
 County 005 1
 U/R 006 1
 Acres 007 1
 Farm type X06 1
 Farm Ac. X07 1

TENURE

15. (a) Do you own or rent this Accommodation

NOTE

Probe carefully to distinguish between

(i) Tenant Purchasers (Code 3)
(i.e. former Local Authority tenants buying out their dwelling under a tenant purchase mortgage agreement)

(ii) Local Authority tenants (Code 4)

- Now ask Q.16 then
- OWNED
 - Outright 1
 - With mortgage (incl. joint owner rental with L.A.) 2
 - Tenant purchase scheme 3
 - RENTED
 - Local Authority 4
 - Other - furnished 5
 - Other - unfurnished 6
 - RENT-FREE (i.e. landlord receives no rent) 7
- Ask Q. 20
Ask Q. 17
Ask Q. 18

- (b) Enter Person Number (page 1) of the household member who owns, rents or gets the accommodation rent free → Per No.
- TAKE – husband if in husband and wife's joint names unless the wife is the chief economic supporter of the household
- male and eldest if a number have joint claims
- (c) How long has the household (i.e. family) been resident in this accommodation → Years

| Amount | | Code |
|--------|-------|-------|
| £/€ | p/c | |
| | | 009 1 |
| | | X08 1 |
| | | X09 1 |

DWELLING CHARGES

16. Do you make separate regular payments to cover

IF YES YES NO

| Local Authority Charges (365) | Ground Rent (366) | Service/maintenance † |
|-------------------------------|-------------------|-----------------------|
| Y | Y | Y |
| N | N | N |
| £/€..... | £/€..... | £/€..... |
| | | |

- (a) how much were your last payments? →
- (b) what periods did they cover? →

† e.g. in apartment blocks (coded 528)

RENTED AND RENT-FREE ACCOMMODATION ONLY

(coded 4 - 7 at Q. 15)

IF RENT PAID (coded 4, 5, 6 at Q. 15)

17. (a) How much rent did you pay for this accommodation including any rooms/garage sub-let →
- (b) How long a period does this cover? Period.....
- (c) Does this rent include any known charges to cover services (e.g. lighting, heating etc.)
- YES Y
- NO N Ask Q. 26
- IF YES, give the following details →

| Type of Charge | Only if specific charge made | |
|----------------|------------------------------|--------|
| | Amount | Period |
| | £/€..... | |
| | £/€..... | |
| | £/€..... | |

- (d) Is this rent actually paid by you or any household members? YES Y
- NO N

IF RENT FREE (coded 7 at Q. 15) complete Q. 18 and Q. 19

18. Please indicate the circumstances whereby accommodation is received rent-free
- Relative of landlord 1
 - Employee of landlord or of company which owns the dwelling 2
 - Other 3

19. Approximately how much per week would it cost to rent the dwelling →

| | | |
|-------|-------|-------|
| | | |
| | | X10 1 |
| | | 862 |

ALL OWNED PRIVATE ACCOMMODATION

(coded 1 - 2 at Q. 15)

HOUSE PURCHASE GRANT

20. Did you purchase (outright or with mortgage) this accommodation during the past 12 months
If YES, did you get a State grant as a first time buyer of a new dwelling:

| | |
|----|-----|
| No | Yes |
| N | Y |
| N | Y |

If YES, enter amount

| Amount | | Code |
|--------|-----|-------|
| £/€ | p/c | |
| | | 901 8 |

ACCOMMODATION OWNED WITH MORTGAGE ONLY

(coded 2 - 3 at Q. 15)

MORTGAGE PAYMENTS

21. (a) From whom did you get the loan or mortgage to purchase this accommodation?

- Building Society 1
- Local Authority 2
- Insurance Company 3
- Bank 4
- Housing Finance Agency 5
- Other (specify) 6

(b) What was the original amount of the mortgage?

(c) How much are your present regular mortgage repayments

Confirm (✓) these repayments exclude

- mortgage protection premiums (Q. 24)

- house insurance premiums (Q. 26)

- interest only
- Principal and Interest combined
- of which* - interest element (if at all possible)

(d) How long a period does this cover? Period.....

(e) IF INTEREST REPAYMENT ONLY, is there an endowment policy covering the principal

YES Y
NO N

If NO, specify how the principal is repaid

(f) How much (approx.) of the principal still remains outstanding

| | | |
|-------|--|-------|
| | | 010 1 |
| | | 903 1 |
| | | 368 |
| | | 36 |
| | | 904 |
| | | 929 8 |

MORTGAGE ALLOWANCE (Local Authority)

22. Did you receive a mortgage allowance in last 12 months

YES Y
NO N

If YES, specify the amount received

MORTGAGE REPAYMENT CONCESSIONS

23. Did you get this mortgage from your employer (e.g. bank and insurance officials)

YES Y
NO N

Ask Q. 24

If YES, do you receive any concessions in repaying it?

YES Y
NO N

Ask Q. 24

If YES (a) actual interest rate charged

(b) value of this concession in past year

MORTGAGE PROTECTION POLICY

24. Do you pay premiums on a mortgage protection policy?

YES Y
NO N

Ask Q. 25

If YES (a) are they included at 21(c)

YES Y
NO N

(b) how much do you pay?

(c) how long a period does this cover? Period.....

SUBSIDIARY HOUSE LOAN

25. Are you currently repaying any subsidiary loan used to purchase this accommodation?

YES Y
NO N

Ask Q. 26

If YES (a) how much was your last repayment?

(b) how long a period does this cover? Period.....

| | | |
|-------|--|-------|
| | | 905 8 |
| | | 501 |
| | | 370 |

ALL TYPES OF ACCOMMODATION

(ask all subsequent questions)

Code £/€ entries if records
 S - seen by interviewer
 C - consulted by respondent
 N - not consulted
 E - estimated

Amount

£/€

p/c

Code

HOUSE INSURANCE

26. Do you have the structure and contents of this accommodation insured?

YES Y
 NO N ASK Q. 27

| Type of Policy | YES | NO | Period | No. in year | Premium Paid | | | |
|--|-----|--------------------------|--------|-------------|--------------|-------|-------|-----|
| If YES, specify last premiums paid | | | | | | | | |
| Structure (separately) | Y | N | | | → [] | | | 371 |
| Contents | Y | N | | | → [] | | | 760 |
| Joint policy | Y | N | | | £/€ | | | |
| Insured value of house = £/€..... | | | | | | | | |
| Are these insurance payments included at 21(c) | YES | <input type="checkbox"/> | | | | | | |
| | NO | <input type="checkbox"/> | | | | | | |

NOTE: House insurance is compulsory for mortgages. Include insurance for TV aerial but exclude separate personal insurance policies on jewellery, clothes etc. and insurance on business property and effects.

27. Did you receive any payment during last 12 months in claims made under these policies (✓)

YES NO

If YES, specify

| | | | | |
|-----------------------|--------------------------|-------|-------|-------|
| payment for contents | → | | | 867 8 |
| payment for structure | → | | | 868 8 |
| Total payment £/€ | <input type="checkbox"/> | | | |

GAS AND ELECTRICITY

28. Do you have gas or electricity supplied to (your part of) this accommodation?

None
 Slot Meter
 Account Meter

| Gas | | Electricity | | | | |
|-----------|-------|-------------|-------------|-------|-------|-------|
| Natural | Other | Ordinary | Night Saver | | | |
| 0 | 3 | 0 | 1 | | | 011 1 |
| 1 | 4 | 2 | 3 | | | |
| Y | | Y | | | | |
| N | | N | | | | |
| £/€ | | £/€ | | | | 012 |
| | | | | | | 013 |
| | | | | | | |
| | | | | | | |
| £/€ | | £/€ | | | | 341 |
| | | | | | | 342 |
| | | | | | | |
| Y | | Y | | | | 757 |
| N | | N | | | | |
| £/€ | | £/€ | | | | 408 |
| | | | | | | |
| Y | | Y | | | | |
| N | | N | | | | |
| £/€ | | £/€ | | | | |

29. IF SLOT METER, did you get a rebate when the meter was cleared the last time

YES
 NO

If YES (i) how much was the rebate received → £/€

(ii) how long a period did it cover →

IF ACCOUNT METER paid directly ESB budget scheme

30. (a) How much was your last bill? →

(b) What quantity did this cover? →

(c) How long a period did it cover? →

(d) Did it include a charge for maintenance or repairs

YES
 NO

If YES, how much was it? → £/€

(e) Did it include purchase repayments?

YES
 NO

If YES, how much was it? → £/€

(this amount must be itemised at Q. 35(A) on the appropriate HB.2)

TELEPHONE

31. (a) Do you have a fixed telephone in (your part of) this accommodation (i.e. non-mobile)

(i) for your household's use only?

(ii) shared with another household?

(b) Does your household share the use of a telephone in another household?

IF YES TO ANY NON-COIN CATEGORY (excluding mobile)

(i) how much was (your share of) the last bill? →

(ii) how long a period did it cover?

(iii) did it include a connection fee? YES NO if yes state amount →

(c) Do you have an answering machine or service?

Yes 1

No 2

/contd. next page

Telephone Contd.

| | | Amount | | Code |
|--------|---|---|---------|-------------------|
| | | £/€ | p/c | |
| If Yes | (i) how much was your last bill? (ii) how long a period did it cover? Period | | | 339 |
| (d) | Do you receive a free telephone rental from the Department of Social, Community and Family Affairs | YES 1 | NO 2 | X11 8 |
| (e) | Do you own or have the use of a mobile phone? Yes 1 No 2 | | | X80 1 |
| If Yes | (i) how much was (your share of) the last bill? (ii) how much was (your share of) the cost of the calls? (iii) how much was (your share of) the cost of the service? (iv) how long a period did it cover? Period | | | 373 374 375 |
| | (v) did it include a connection fee? YES <input type="checkbox"/> NO <input type="checkbox"/> If Yes, state amount | | | 376 |
| | Do you have insurance for your mobile phone? Yes 1 No 2 | | | X40 1 |
| If Yes | how much was (your share of) the insurance cost? YES NO | | | 377 |
| (f) | did you make any of the following payments during the past 12 months | Booking deposit 1 2 Installation fee 1 2 Reconnection fee 1 2 Additional service 1 2 | | |
| | IF YES TO ANY, enter total payments made → | | | 761 |
| | NOTE - if no bill received or payment less than the two monthly rental, explain | | | |

RECREATIONAL EQUIPMENT

| | | | | | | | | |
|---------|---|---|--|------------------------------------|---------------|---------------|----------------|---|
| 32. (a) | Do you have a TV or Video Recorder in (your part of) this accommodation | Video Recorder | Type(✓) Ordinary → Portable → | 1st Y 1 | 2nd Y 1 | 3rd Y 1 | | X12 1 015 1 |
| (1) | If YES, what type is it and is it | Owned 2 Rented 3 | Colour B/W 2 4 3 5 | | | | | 033 1 X13 1 |
| | IF RENTED | | Video Recorder Television Combined rental | | | | | 790 519 791 |
| (2) | Do you subscribe to a communal TV piped or beamed aerial system or have access to satellite | YES Y NO N | ASK Q. 32(b) Piped TV Piped TV & Decoder Beamed areas TV Satellite (decoder) | YES NO 1 N 1 N 1 N 1 N | | | | X73 1 X74 1 X75 1 X76 1 |
| | If YES | | | | | | | 806 |
| (b) | Are there any of the following appliances owned or continuously available for use? | Stereo System (full or part) CD player (on its own or part of a stereo system) Camcorder/Palmcorder Satellite dish Home computer for:- - recreational purposes - business/professional purposes | YES NO 1 2 1 2 1 2 1 2 1 2 1 2 2 3 | | | | | X16 1 X77 1 X78 1 X79 1 X17 1 |
| | (If Yes, ask Q. 32(c)) | | | | | | | |

Recreational Equipment Contd.

(c) (3) Do you have access to the Internet or your own account?

Yes 1
 No 2 (Ask Q. 33)

If Yes (i) how much was your last bill?
 (ii) how long a period did it cover?
 (iii) did it include a connection fee?

Period
 Yes No If Yes, state amount

| Amount | | Code |
|--------|-------|-------|
| £/€ | p/c | |
| | | X39 1 |
| | | 772 |
| | | 618 |

HIRED DOMESTIC HELP

33. Does your household regularly employ domestic help (e.g. housekeeper, daily/weekly help, child minder, au-pair, gardener, nurse, cleaner, care attendant/assistant etc.)

YES Y
 NO N

If YES, give the following details

| Description of Hired Help (if part-time, specify no. of days/weeks) | Resident | | Total Wages Paid* | Social Insurance Contribution by Hld. | Period |
|--|----------|----|-------------------|---------------------------------------|--------|
| | YES | NO | | | |
| | Y | N | £/€ | £/€ | |
| | Y | N | £/€ | £/€ | |
| | Y | N | £/€ | £/€ | |
| | Y | N | £/€ | £/€ | |
| | Y | N | £/€ | £/€ | |
| | Y | N | £/€ | £/€ | |
| | Y | N | £/€ | £/€ | |

non res.
 res.

510
801

(b) *If resident give cash wages only; exclude deductions or allowances for board and lodgings

Do you pay for the care of your children in another house or creche Yes No

Amount Period
 house £/€ _____
 creche £/€ _____

house
 creche

829
830

EDUCATIONAL GRANTS AND SCHOLARSHIPS

34. Does any member of your household currently hold an educational grant/scholarship pay no/reduced registration fees because parent is teacher/lecturer?

YES NO
 Y N
 Y N

If YES, give following details

| Recipient Per. No. | Type of Grant or Scholarship (or no/reduced registration fees) | Source/Reason/Course | Annual Value* | |
|--------------------|--|----------------------|--------------------------|--------------------|
| | | | Registration Fees £/€ | Maintenance £/€ |
| | | | | |
| | | | | |
| | | | | |

*Including amounts (e.g. registration fees, board) not paid directly in cash as part of scholarship.

SCHOOL MEALS

35. Were any school children in this household provided with milk, meals or snacks at day school during the past 7 days? YES Y
 NO N ASK Q. 36

If YES, give the following details →

| Description of Meal/Snack | Number | Free? | | Amount paid if not free (and period) |
|---------------------------|--------|-------|----|--------------------------------------|
| | | YES | NO | |
| Milk | | Y | N | £/€ |
| Meals/Snacks | | Y | N | £/€ |

| Amount | | Code |
|--------|-------|-------|
| £/€ | p/c | |
| | | 720 1 |
| | | 78 1 |

FREE HEALTH BOARD HOME SERVICES

36. Is the household currently receiving ————

| | | | |
|--|---|---|--------------------------------|
| Free milk for expectant or recent mother/infant? | Y | N | IF YES, enter Pints per week → |
| Free domestic help† | Y | N | Hours per week → |
| Free home nursing? | Y | N | Visits per week → |

(† financial assistance entered at Q. 14 HB. 2)

| | | |
|-------|-------|-------|
| | | X18 1 |
| | | X19 1 |
| | | X20 1 |

HOUSEHOLD APPLIANCES

37. Are any of the following appliances owned or continuously available for use in this accommodation? ————

| | YES | NO | |
|---|-----|----|-------|
| Vacuum cleaner | 1 | 2 | |
| Spin dryer (separate) | 1 | 2 | |
| Washing machine | 1 | 2 | |
| Dishwasher | 1 | 2 | |
| Refrigerator (separate) | 1 | 2 | |
| Deep freeze (separate) | 1 | 2 | |
| Refrigerator with Freeze (2 separate doors) | 1 | 2 | |
| Micro-wave oven | 1 | 2 | |
| Food processor | 1 | 2 | |
| Deep fat fryer | 1 | 2 | |
| Liquidiser | 1 | 2 | |

| | | |
|-------|-------|-------|
| | | 027 1 |
| | | 028 1 |
| | | 016 1 |
| | | 017 1 |
| | | 018 1 |
| | | 019 1 |
| | | X21 1 |
| | | X22 1 |
| | | X15 1 |
| | | X36 1 |
| | | X37 1 |

MAJOR HOUSEHOLD EXPENDITURE

38. Were any of the following major expenditures incurred by the household during the past 12 months?

| Cash Purchases | YES | NO | Cash Purchases | YES | NO |
|-------------------------------------|-----|----|----------------------|-----|----|
| Cooker (gas/electric) | Y | N | Television | Y | N |
| Dishwasher | Y | N | Video recorder | Y | N |
| Washing machine | Y | N | Homecomputer | Y | N |
| Clothes dryer | Y | N | Stereo system | Y | N |
| Refrigerator (with/without freezer) | Y | N | Dining room suite | Y | N |
| Deep freeze | Y | N | Sitting room suite | Y | N |
| | | | Camcorder/palmcorder | Y | N |
| | | | Satellite dish | Y | N |
| | | | CD/Midi System | Y | N |
| | | | Modem (computer) | Y | N |
| | | | Scanner (computer) | Y | N |

If YES enter

| Description | Approx. Date | Cost |
|-------------|--------------|-------|
| | | |
| | | |
| | | |

| | | |
|-------|-------|-------|
| | | |
| | | |
| | | |

BUSINESS, RECOVERABLE AND SHARED EXPENSES

41. Are any of these household expenses

(a) to be (or have been) claimed as expenses for income tax purposes because of a business conducted at this address? Y N

(b) paid directly or refunded (partly or wholly) by an employer as (please ✓ if YES) Y N
 - business expenses?
 - 'perk' of the job?

(c) paid directly or refunded (partly or wholly) by anybody else outside the household (e.g. friend, relative etc.) as a gift? Y N

IF YES TO ANY give details _____

YES NO

- RENT
- LOCAL AUTHORITY CHARGES
- GROUND RENT
- MORTGAGE REPAYMENTS
- HOUSE INSURANCE
- ELECTRICITY
- GAS
- TELEPHONE

| Code a, b or c | Included above? | | Period | Amount | | Code |
|----------------|-----------------|----|--------|--------|-------|------|
| | Yes | No | | £/€ | p/c | |
| | Y | N | | | | 907 |
| | Y | N | | | | 908 |
| | Y | N | | | | 909 |
| | Y | N | | | | 910 |
| | Y | N | | | | 911 |
| | Y | N | | | | 912 |
| | Y | N | | | | 913 |
| | Y | N | | | | 914 |

MAIN HEATING COOKING METHOD CODES – Q. 40(b)

SPACE HEATING METHOD

Central Heating

- Oil 1
- Back boiler (open fire) 2
- Piped gas 3
- LPG (e.g. calor gas) 4
- Solid fuel boiler (independent) 5
- Electric 6
- Solid fuel room heater 7
- (closed stove e.g. Parkray) 7
- Solid fuel cooker (e.g. Aga) 8
- Dual fuel boiler 9
- Renewable (e.g. solar) 10
- Other system 11

Non Central Heating

- Open fire 12
- Solid fuel room heater 13
- (closed stove e.g. Parkray) 13
- Solid fuel cooker 14
- Electric – storage heater 15
- other fixed appliances 16
- portable appliance 17
- Piped gas heater 18
- LPG heater (e.g. Super Ser) 19
- Paraffin heater 20
- Other 21
- None 22

WATER HEATING METHOD

- Central heating system 1
- Solid fuel boiler
- Open fire 2
- Stove (room heater) 3
- Cooker (e.g. Aga) 4
- Electric
- Immersion heater 5
- Instantaneous heater 6
- Gas
- Boiler 7
- Instantaneous heater 8
- Other 9
- None 10

COOKING METHODS

- Cooker (independent)
- Electric 1
- Piped Gas 2
- LPG (e.g. calor gas) 3
- Solid fuel 4
- Oil fired 5
- Cooker/Central heating combined
- Solid fuel 6
- Oil fired 7
- Other (e.g. open fire) 8

- Milk
- Bread
- Butcher
- Grocery
- Other
- Shop
- Freq.

OFFICE USE

| | | |
|-------|--|-------|
| | | X29 1 |
| | | X30 1 |
| | | X31 1 |
| | | X32 1 |
| | | X33 1 |
| | | X34 1 |
| | | X35 1 |

HOUSEHOLD BUDGET SURVEY

(1)

RECORD 3

PERSONAL SCHEDULE (HB.2)

(2-8)

| | | | |
|----------|------|------|-----|
| Ref. No. | Area | Hld. | Per |
| | | | |

WORKING AND OCCUPATIONAL STATUS (ASK ALL)

| | Full time | Part time | | |
|--|------------------|------------------|--------------------------|---------------------------------------|
| 1. Are you at present: | | | | |
| <input type="checkbox"/> employee? <input type="checkbox"/> community employment schemes <input type="checkbox"/> assisting relative? <input type="checkbox"/> self-employed? | 1 1 1 1 | 2 2 2 2 | 1 2 3 4 | } Q.2 } Q.5 |
| WORKING | | | | |
| <input type="checkbox"/> unemployed but seeking work? <input type="checkbox"/> unemployed because of illness, sickness, etc but intending to seek work again? <input type="checkbox"/> not yet at work? | | | 5 6 7 | } Q.3 } Q.13 |
| OUT OF WORK | | | | |
| <input type="checkbox"/> engaged in home duties? <input type="checkbox"/> retired? <input type="checkbox"/> in full-time education? <input type="checkbox"/> unable to work because of permanent illness or disability? <input type="checkbox"/> other (specify) | | | 8 9 10 11 12 | } Q.13 } Q.4 } Q.5(b) } Q.13 |
| NOT WORKING | | | | |

| AMOUNT (Delete as appropriate) | | Code |
|-----------------------------------|------------------|-------|
| £/€ | p/c | |
| | (working status) | 050 1 |
| | (full/part time) | 061 1 |

TO ALL EMPLOYEES (coded 1, 2 or 3 at Q.1)

2. (a) Are you away from work at present - i.e. for more than the last 3 working days? YESY
NON ASK Q.5

If YES (i) how long have you been away from work? _____ →

(ii) what is the reason for your absence?
1 - illness/accident 2 - holidays 3 - strike 4 - other (specify)

(iii) what pay are you receiving from your employer during this absence?
1 - full pay 2 - part-pay 3 - no pay

(b) How long have you been in continuous employment _____ →
IF LESS THAN 12 MONTHS
Enter the total number of weeks employed in past 12 months _____ →

| | | | |
|--|-------------------------|-------------------------|-------|
| | (years) | (weeks if under a year) | 051 1 |
| | | | 052 1 |
| | | | 049 1 |
| | (years) | (weeks) | X50 1 |
| | (weeks if under a year) | | X51 1 |
| | (years) | (weeks if under a year) | 053 1 |
| | (years) | (weeks if under a year) | 055 1 |

TO ALL UNEMPLOYED (coded 5 or 6 at Q.1)

3. (a) How long have you been out of work? _____ →

(b) If less than a year enter former usual gross wage or salary at Q.7

TO ALL RETIRED (coded 9 at Q.1)

4. (a) How long are you retired? _____ →

(b) If less than a year enter former usual gross wage or salary at Q.7

ALL WORKING, UNEMPLOYED OR RETIRED (codes 1 - 6, 9 and 10 at Q.1)

{

Codes 1, 2, 3, 4 - present job
Codes 5, 6, 9 - usual/previous job
Code 10 - subsidiary job

5. (a) What is/was your present/or usual principal job?

Occupation and description of job (i.e. what you do).....

.....

.....

industry/business (i.e. where you work/worked).....

.....

| | | |
|-------------------------------------|------|-----|
| | Main | Sub |
| If a Farmer (✓) | 3 | 4 |
| enter total acreage of farm _____ → | | |

CODES 1, 2, 3, 4 (i.e. working) ASK Q.5 (b)

CODES 5, 6, 9 (i.e. not at work) ASK Q.13

(b) If presently working or student do you have regular subsidiary jobs(s)? YES 1
NO 2 ASK Q. 6

If YES, give following details for each -

Description of work.....

Industry/business.....

| | | | |
|--|----------|--|-------|
| | (occup.) | | 056 1 |
| | (indus.) | | 058 1 |
| | (acres) | | X5 1 |
| | | | 059 1 |
| | | | X57 1 |

NOW ASK Q. 6 IF EMPLOYEE
Q. 10 IF SELF-EMPLOYED

ALL EMPLOYEES (coded 1 at Q.1) - PRINCIPAL JOB

WAGES OR SALARY PARTICULARS

6. (I) Insert particulars of last wage or salary below

| | | | | AMOUNT | | AMOUNT | | Code |
|-----|--|-----|--------|--------|--------|--------|-------|-------|
| | | | | £/€ | p/c | £/€ | p/c | |
| (a) | TOTAL GROSS AMOUNT EARNED | | | | | | | 551 |
| (b) | INCLUDING DEDUCTIONS MADE AT SOURCE | YES | NO | | | | | |
| | Income tax | Y | N | | | | | 593 |
| | Social insurance contribution (incl. levies) | Y | N | | | | | 594 |
| | Superannuation or pension contribution | Y | N | | | | | 500 |
| | Trade union dues or subscriptions | Y | N | | | | | 518 |
| | Life assurance premiums | Y | N | | | | | |
| | VHI/BUPA insurance | Y | N | | | | | |
| | Mortgage repayments | Y | N | | | | | 499 |
| | Regular savings (e.g. instalment savings) | Y | N | | | | | |
| | Other deductions (specify below) | Y | N | | | | | 542 |
| | | | | | | | | |
| | | | | | | | | |
| | | | | | | | | |
| | | | | | | | | |
| (c) | NET "TAKE-HOME" AMOUNT | | | | | | | |
| (d) | How long a period do these particulars cover? | | Period | | | | | |
| (e) | How many actual hours a week (excluding meal intervals) did you work during this period? | | Hours | | | | | |
| (f) | Did the above wage/salary include a refund of business expenses (e.g. travel, subsistence, etc.) or an allowance for motoring from your employer | YES |Y | YES |Y | | | 060 1 |
| | | NO |N | NO |N | | | |
| | If YES, specify | | | £/€ | | | | |
| | | | | £/€ | | | | |
| (g) | Did you refund a sickness payment from the Department of Social Welfare to your employer to obtain this amount | YES |Y | YES |Y | | | |
| | | NO |N | NO |N | | | |
| | IF YES, specify type of payment and amount refunded by you | | | £/€ | | | | |

(ii) IF SALARIED EMPLOYEE enter gross annual salary and the annual amounts of as many deductions as possible for completeness sake. Exclude motoring and other business allowances or refunds.

| Annual Gross Salary | £/€ | Annual Deductions | £/€ | Annual Deductions | £/€ |
|------------------------------|-------|-------------------|-------|-------------------|-------|
| Basic | | Income Tax | | | |
| Additions (child allowances) | | PRSI | | | |
| | | Pension | | | |
| Total | | VHI/BUPA | | | |

USUAL WAGE OR SALARY

7. Do you *usually* receive the gross wage or salary recorded at Q.6 (a) above? YES Y, ASK Q.8
NO N

IF NO (a) what gross amount do you usually receive →
(b) how long a period would this cover? Period

915

OCCASIONAL ADDITIONS TO WAGE OR SALARY

8. Do you ever receive occasional additions to your wage or salary such as Christmas, holiday or quarterly bonuses, profit sharing bonuses, commissions, etc. *not included* at question 6 or 7? YES Y
NO N ASK Q.9

IF YES, what payments of this kind have you received in the last 12 months? specify

| Description of Payments | AMOUNT | | Was this paid? | |
|-------------------------|--------|-------|----------------|------------|
| | £/€ | p/c | Before Tax? | After Tax? |
| | | | 1 | 2 |
| | | | 1 | 2 |
| | | | 1 | 2 |
| | | | 1 | 2 |

| AMOUNT | | Code |
|--------|-------|-------|
| £/€ | p/c | |
| | | 552 8 |

BENEFITS IN-KIND FROM EMPLOYER

9. Do you receive any of the following benefits from your employer?

YES NO
(a) FREE Luncheon Vouchers Y N
" Meals (e.g. lunches, dinners) Y N
" Food (e.g. milk, eggs, potatoes) Y N
" Fuel (e.g. turf) Y N

Records (code £/€ entries)
S - seen by interviewer
C - consulted by respondent
N - not consulted
E - estimated

IF YES, specify quantities and values of each received in last 7 days

| Description of Benefit | Quantity or No. | Value | |
|------------------------|-----------------|-------|-------|
| | | £/€ | p/c |
| | | | |
| | | | |
| | | | |

| | | |
|-------|-------|-------|
| | | 571 1 |
|-------|-------|-------|

(b) Company Car

Are you supplied with a company car (✓) Yes No

IF YES please state the amount on which benefit-in-kind tax is charged (about 30% of the price of the car) →

(if not available note make, model and year of car)

| | | |
|-------|-------|-----|
| | | 869 |
|-------|-------|-----|

(c) Expenses paid as a perk of job

Are any of the following expenses paid by your employer as a perk of the job. If yes please state annual amounts

- Health Insurance (e.g. VHI, BUPA) Yes No Annual Amount →

- Life Assurance Yes No Annual Amount →

- Childrens School Fees Yes No Annual Amount →

- Club Subscriptions (specify type of club) Yes No Annual Amount →

| | | |
|-------|-------|-------|
| | | 870 8 |
| | | 871 8 |
| | | 872 8 |
| | | 873 8 |

ALL SELF EMPLOYED (coded 4 at Q.1) - MOST REMUNERATIVE JOB

10. (a) How much was your total *net** income or profit from your business or profession *before Tax* for the most recent 12 months for which you can give a figure?

- Income →
- Year ending.....
- NOW ASK Q.11
- Don't know (✓).....

| | | AMOUNT | | Code |
|---|--|---|-------|-------|
| | | £/€ | p/c | |
| | | | | 553 8 |
| | | | | 554 8 |
| IF DON'T KNOW | | | | |
| (b) Do you draw <i>regular</i> sums of money from the business for your <i>own personal use</i> ? | | YES.....Y | | |
| | | NON, ASK (c) | | |
| IF YES | | | | |
| (i) how much do you <i>usually</i> draw out? | | Amount £/€ | | |
| (ii) how often on <i>average</i> do you do this? | | Frequency..... | | |
| (iii) <i>after</i> deducting these personal withdrawals how much was your <i>net</i> * income or profit before tax for the most recent 12 months for which you can give a figure? | | Income £/€ | | |
| | | Year ending | | |
| | | (NOW ASK Q.11) | | |
| | | Don't know (✓) <input type="checkbox"/> | | |
| IF NO OR DON'T KNOW | | | | |
| (c) what was the <i>total turnover</i> of the business during the most recent 12 months for which you can give a figure? | | Income £/€ | | |
| | | Year ending | | |
| | | Don't know (✓) <input type="checkbox"/> | | |
| | | (NOW ASK Q.11) | | |
| 11. Are you the <i>sole</i> owner of your business or are you in partnership with someone else? | | | | |
| | | Sole owner..... | | |
| | | Partnership..... | | |
| IF IN PARTNERSHIP has your partner's share been included in the figure given above? | | YES.....Y | | |
| | | NO.....N | | |
| IF YES, how much was your partner's share? | | £/€ | | |
| | | | | 555 |
| | | | | 556 |
| REGULAR SUBSIDIARY JOB - IF YES AT Q.5(b) | | | | |
| 12. (a) IF AN EMPLOYEE, enter details at LEFT HAND margin of Q.6-9 | | | | 557 8 |
| (b) IF SELF-EMPLOYED, enter details at LEFT HAND margin of Q.10 & 11 | | | | 558 8 |
| * <i>net of business expenses and salaries wages paid to others</i> | | | | |
| | | | | |
| | | | | |
| | | | | |
| | | | | |

- 14. Do you have any of the following long-lasting conditions?**
- | | Yes | No |
|--|-----|----|
| (a) Blindness, deafness or a severe vision or hearing impairment? | 1 | 2 |
| (b) A condition that substantially limits one or more basic physical activities such as walking, climbing stairs, reaching, lifting or carrying? | 1 | 2 |
| (c) A learning or intellectual disability? | 1 | 2 |
| (d) A psychological or emotional condition? | 1 | 2 |
| (e) Other, including any chronic illness? | 1 | 2 |

- 15. If 'YES' to any of the conditions specified in question 14, do you have any difficulty in doing any of the following activities?**
- | | Yes | No |
|--|-----|----|
| (a) Learning, remembering or concentrating? | 1 | 2 |
| (b) Dressing, bathing or getting around inside the home? | 1 | 2 |
| (c) Going outside the home alone to shop or visit a doctor's surgery? | 1 | 2 |
| (d) Working at a job or business or attending school or college? | 1 | 2 |
| (e) Participating in other activities, for example leisure or using transport? | 1 | 2 |

| CONTRIBUTORY | | PERIOD |
|--------------|----|--------|
| YES | NO | |
| 8 | 9 | |
| | | |
| | | |
| | | |

| AMOUNT | | Code |
|--------|-------|------|
| £/€ | p/c | |
| | | 863 |
| | | 57 |
| | | 577 |
| | | 852 |

OTHER RECEIPTS AND BENEFITS

LONG TERM RECEIPTS

16. Are you currently receiving any of the following benefits or receipts? IF YES, ENTER AMOUNTS BEING RECEIVED

(a) STATE WELFARE BENEFITS

| | YES | NO |
|---|-----|----|
| Old Age | | |
| (i) Pre-retirement allowance | Y | N |
| (ii) Old age pension (66 years and over) | Y | N |
| (iii) Retirement pension (65-66 years) | Y | N |
| (iv) Single woman's allowance (59 - 65 years) | Y | N |

Cont/d.....

LONG TERM RECEIPTS (contd.)

| | YES | NO | Contributory? | | Period | AMOUNT | | Code |
|--|-----|----|---------------|----|--------|--------|-------|------|
| | | | Yes | No | | £/€ | p/c | |
| | | | | | | | | |
| illness | | | | | | | | |
| (v) Invalidity pension (i.e. <i>permanent incapacity for work due to illness</i>) | Y | N | | | | | | 850 |
| (vi) Disablement benefit (i.e. <i>long-term incapacity for work due to occupational injury/illness</i>) | Y | N | | | | | | 851 |
| (vii) Blind pension | Y | N | | | | | | 854 |
| (viii) Disability Allowance (Previously disabled person's maintenance allowance) | Y | N | | | | | | 859 |
| (ix) Carers allowance | Y | N | | | | | | 864 |
| Living Alone Allowance | | | | | | | | |
| (x) Widow's pension | Y | N | 0 | 1 | | | | 58 |
| (xi) Deserted wife's benefit/allowance | Y | N | 7 | 8 | | | | 85 |
| (xii) Lone Parents allowance | Y | N | | | | | | 853 |
| (xiii) Prisoner's wife's allowance | Y | N | | | | | | 855 |
| Other | | | | | | | | |
| (xiv) Child benefit (formerly children's allowance) | Y | N | | | | | | 576 |
| (xv) Rent allowance (i.e. tenants affected by 1982 decontrol of rents) | Y | N | | | | | | 856 |
| (xvi) Other regular long term State benefits | Y | N | | | | | | 582 |

| (b) RETIREMENT PENSIONS (only from your own or your spouse's former employment) | YES | NO | Last Amount Received | | | | If after tax how much was deducted | | Code |
|--|-----|----|----------------------|--------|-------------|------------|------------------------------------|-------|------|
| | | | Amount | Period | Before Tax? | After Tax? | | | |
| | | | £/€ | | 1 | 2 | | | |
| (i) from <i>state</i> employment | Y | N | £/€ | | 1 | 2 | £/€ | | 559 |
| (ii) from <i>other</i> employment | Y | N | £/€ | | 1 | 2 | £/€ | | 560 |
| (c) ANNUITIES | Y | N | £/€ | | 1 | 2 | £/€ | | 568 |
| (d) TRUSTS OR COVENANTS | Y | N | £/€ | | 1 | 2 | £/€ | | 568 |

IF YES, give particulars requested above and ENTER AMOUNTS BEING RECEIVED

| (e) OTHER REGULAR RECEIPTS AND BENEFITS | YES | NO | Period | | Code |
|---|-----|----|--------|-------|-------|
| | | | | | |
| (i) Military service pensions (Irish or foreign) | Y | N | | | |
| (ii) Regular allowance from somebody outside the house (e.g. friend, relative) | Y | N | | | 574 |
| (iii) Others - specify below (e.g. maintenance from a separated spouse, foster child allowance etc) | Y | N | | | |
| | | | | | |
| | | | | | |
| | | | | | |

IF YES, give particulars required above and ENTER AMOUNTS BEING RECEIVED →

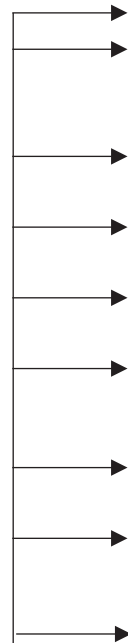
OTHER REGULAR BENEFITS RECEIVED IN LAST 12 MONTHS

14. Did you receive any of the following receipts during the past 12 months?

YES NO

No. of weeks received in last 12 months

- Unemployment**
- (i) Unemployment benefit Y N
- (ii) Unemployment assistance Y N
- Illness**
- (iii) Disability benefit (i.e. incapacity to work because of illness) Y N
- (iv) Injury benefit (i.e. incapacity to work because of occupational injury) Y N
- (v) Private Insurance payment while out of work due to illness Y N
- Income Supplement**
- (vi) Family income supplement Y N
- (vii) Supplementary welfare allowance (basic rate; see Q.43 for supplement) Y N
- Other**
- (viii) Trade Union strike/sick pay Y N
- (ix) Other regular short term receipts (e.g. maternity benefit, private insurance) Y N



| AMOUNT | | Code |
|--------|-------|---------|
| £/€ | p/c | |
| | | 583 1 |
| | | 063 1 |
| | | 584 1 |
| | | 064 1 |
| | | 586 1 |
| | | 066 1 |
| | | 860 1 |
| | | X58 1 |
| | | 591 X81 |
| | | 861 1 |
| | | X59 1 |
| | | 585 1 |
| | | 065 1 |
| | | 570 1 |
| | | 068 1 |
| | | 590 1 |

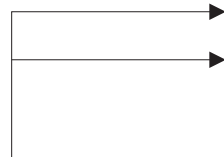
IF YES, TO ANY, enter the following details _____

LUMP-SUM STATE PAYMENTS

15. Have you received any of the following receipts during the past 12 months?

YES NO

- Death grant Y N
- Redundancy Gratuity Y N
- IF YES, no. of years with firm



IF YES, how much did you receive? _____

| | | |
|-------|-------|-------|
| | | 590 8 |
| | | 090 1 |
| | | 070 1 |

ALL OTHER INCOME

INTEREST AND DIVIDENDS

YES NO

16. Do you have money invested in
- Stocks and shares? 1 2
 - Government loans? 1 2
 - Building Societies 1 2
 - IF YES, state dividend/interest paid or credited to you during the past 12 months.
 - Deposit/Savings Accounts
 - Commercial Banks? 1 2
 - Trustee Savings Bank? 1 2
 - Post Office Savings Bank 1 2
 - Other (e.g. unit trusts)? 1 2

| Description of Interest or Dividend | Amount received in last 12 months | | Was this paid? | |
|-------------------------------------|-----------------------------------|--------------|----------------|------------|
| | foreign (indicate currency) | Domestic £/€ | Before Tax? | After Tax? |
| | | | 1 | 2 |
| | | | 1 | 2 |
| | | | 1 | 2 |
| | | | 1 | 2 |

Records (code £/€ entries)
 S - seen by Interviewer
 C - consulted by respondent
 N - not consulted
 E - estimated

| AMOUNT | | Code |
|--------|-------|-------|
| £/€ | p/c | |
| | | 565 8 |
| | | 566 8 |
| | | 574 8 |
| | | 574 5 |
| | | 594 |
| | | 594 |
| | | 865 |

INCOME FROM PROPERTY

17. Do you receive any income from the rental of land or property (excluding any part of this accommodation let or sublet?)

YES.....Y
 NO.....N ASK Q.18

IF YES, how much did you receive in the last 12 months before deducting income tax but after deducting all allowable expenses?

Farming land
 Other property

OCCASIONAL WORK

18. Have you at any time during the past 12 months made any further money or profit (e.g. babysitting, grinds, occasional work)?

YES.....Y
 NO.....N ASK Q.19

IF YES, give the following details for each

| Description of Work | Date work took place | Approx. Duration | Income, profit or fees |
|---------------------|----------------------|------------------|------------------------|
| | | | £/€ |
| | | | £/€ |
| | | | £/€ |

INCOME OF DEPENDENTS (IF ANY) UNDER 15 YEARS

19. If you have dependents under 15 years

YES NO

- (i) do they get a regular allowance from outside the household? 1 2
- (ii) did they earn money outside the household in last 2 months? (e.g. babysitting, other part-time jobs, etc.) 1 2

IF YES, give the following details for each child

| Per. No. | Source of Income | Approx. Income in last 2 months |
|----------|------------------|---------------------------------|
| | | £/€ |
| | | £/€ |
| | | £/€ |

TO ALL RESPONDENTS

DIRECT SOCIAL INSURANCE OR HEALTH CONTRIBUTIONS

20. Do you make any direct social insurance or health payments (i.e. not deducted by employer)?

YES.....Y
 NO.....N ASK Q.21

IF YES, (a) how much did you pay (directly)?

Social Insurance
 Health Contribution
 Health Levy

(b) how long a period does this cover? Period.....

DIRECT INCOME TAX/CAPITAL GAINS TAX

21. Have you paid any income tax or capital gains tax *directly* to the Revenue Commissioners *during the last 12 months*? YES.....Y
NO.....N, ASK Q.22

IF YES, give details below

| Source of Income on which tax was due | Amount paid in last 12 months |
|---------------------------------------|-------------------------------|
| | £/€ |
| | £/€ |
| | £/€ |

DIRECT INCOME TAX REFUNDS

22. Have you had any income tax refunded directly to you by the Revenue Commissioners *during the last 12 months*? YES.....Y
NO.....N, ASK Q.23

IF YES, how much was refunded

Reason

| AMOUNT | | Code |
|--------|-------|-------|
| £/€ | p/c | |
| | | 593 8 |
| | | 071 8 |

REGULAR PERSONAL PAYMENTS
(Ask all questions)

LICENCES

23. Have you bought any of the following *during the past 12 months*? YES NO

- Television licence YES NO
- Full driving licence 3 years 10 years YES NO
- Provisional driving licence YES NO
- Dog licence YES NO
- Fishing licence YES NO
- Shooting licence YES NO
- Others - Specify below YES NO

IF YES
enter payments
in last 12 months

| | | |
|-------|-------|-------|
| | | 520 8 |
| | | 521 8 |
| | | 522 8 |
| | | 522 8 |
| | | 522 8 |
| | | 522 8 |
| | | 522 8 |

OWNERSHIP AND USE OF MOTOR VEHICLES

24. Do you *currently*:

- (i) own a motor vehicle *outright*?
- (ii) own a motor vehicle *under* a HP or other credit sales agreement?
- (iii) have the *continuous use* for private purposes of a motor vehicle owned by someone outside the household: (e.g. employer, relative)

| Yes | No | MOTOR | |
|-------------|----|-----------|-----------|
| | | Car/Van | Cycle |
| Y | N | 2 | 5 |
| Y | N | 3 | 6 |
| Y | N | 4 | 7 |
| Total No. → | | No. | No. |
| | | £/€ | £/€ |

MOTOR TAX AND INSURANCE

25. How much did you pay during the past 12 months for?

- Motor Tax 5
- Comprehensive Insurance 8
- Other motor insurance 9

| | | |
|-------|-------|------|
| | | 07 1 |
| | | 07 1 |
| | | 07 1 |
| | | 45 |
| | | 45 |
| | | 07 1 |

MOTOR INSURANCE CLAIMS

26. Did you receive payments from an Insurance Company during the last 12 months from a claim on a motor insurance policy (arising from an accident in a private capacity, not at work)? YES NO

IF YES, please state amount received in respect of damage to your car (exclude amounts in respect of personal injuries) _____ →

PURCHASE OF MOTOR VEHICLE

27. Did you purchase or sell a motor vehicle (used for private purposes) during the past 12 months (including purchase by HP, Credit Sale or financial lease)? YES NO

IF YES, please give the following details
(a) Purchase month/year

Month and year acquired...../.....

| | new car/ van | new motor cycle | second hand car/van | second hand motor cycle |
|---|-----------------|--------------------|------------------------|----------------------------|
| Cash/Personal Loan..... | 2 | 1 | 3 | 1 |
| HP / Credit Sale / Financial Lease..... | 5 | 6 | 4 | 6 |

List price of car (i.e. brochure or catalogue price in the case of new cars or label price for second hand cars and before deducting any trade-in allowances) _____ →

(b) Sale
Trade-in value against list price allowed on old vehicle _____ →
or
Cash received for old vehicle if not traded in _____ →

ANNUAL MILEAGE (motor car/van only)

28. Enter approximate mileage in last 12 months _____ Total annual mileage
Of which - business mileage _____

REGULAR PARKING/GARAGING EXPENSES

29. Do you rent a garage, and/or regularly pay a fixed fee to park or garage your car? YES.....Y NO.....N

IF YES (i) how much do you pay _____ →
(ii) how long a period does this cover? Period.....

BUSINESS AND RECOVERABLE MOTORING EXPENSES

30. Are any of your motoring expenses:

A. to be (or have been) claimed as expenses for income tax purposes (if self-employed)? YES.....Y NO.....N

B. paid directly or refunded (wholly or partly) as business expenses by your employer? YES.....Y NO.....N

C. paid directly or refunded (wholly or partly) by anybody else outside the household (e.g. relative)? YES.....Y NO.....N

| | Code A, B or C | % or Amount |
|------------|----------------------|----------------|
| Tax | | |
| Insurance | | |
| Motor Fuel | | |
| Servicing | | |
| Other | | |

IF YES, enter the following details _____

| AMOUNT | Code |
|--------|-------|
| | |
| | 874 |
| | 81 8 |
| | 82 8 |
| | 827 8 |
| | 828 8 |
| | X67 1 |
| | X68 1 |
| | 464 |
| | 081 1 |
| | 916 |
| | 917 |
| | 918 |
| | 919 |
| | |

SEASON TICKETS

31. Do you currently hold any weekly, monthly or season ticket - including any purchased by you for somebody else (e.g. son, daughter, etc.)

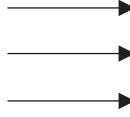
- Bus
- Train
- Bus & Train (combined)
- Sporting/Recreational
- Other

Yes No
 Y N
 Y N
 Y N
 Y N
 Y N

IF YES, give the following details

| Description of Season Ticket | Period |
|------------------------------|--------|
| | |
| | |
| | |

ENTER COST



AMOUNT

£/€ p/c

Code

LIFE ASSURANCE

32. Do you pay premiums on any life assurance policies?

- YES NO
- Whole life 1 N
 - Endowment 2 N
 - Educational 3 N
 - Investment 4 N

IF YES, give the details

How is the premium paid?

| House Purchase Policy | | Description of Policy | Amount of Premium £/€ | Period | Deducted from Salary | Banker's Order | Collected by Co. Official | Paid directly by you |
|-----------------------|----|-----------------------|-----------------------|--------|----------------------|----------------|---------------------------|----------------------|
| YES | NO | | | | | | | |
| Y | N | | | | 1 | 2 | 3 | 4 |
| Y | N | | | | 1 | 2 | 3 | 4 |
| Y | N | | | | 1 | 2 | 3 | 4 |
| Y | N | | | | 1 | 2 | 3 | 4 |

OTHER INSURANCE

YES NO

33. Do you pay premium on any other insurance policies?

- Health (e.g. VHI/BUPA) 5 N
- Accident 6 N
- Bicycle 7 N
- Jewellery 8 N
- Other 9 N

IF YES, give the details

How is the premium paid?

| Type of Policy | Amount of Premium | Period | Deducted from Salary | Banker's Order | Collected by Co. Official | Paid directly by you |
|----------------|-------------------|--------|----------------------|----------------|---------------------------|----------------------|
| | £/€ | | 1 | 2 | 3 | 4 |
| | £/€ | | 1 | 2 | 3 | 4 |
| | £/€ | | 1 | 2 | 3 | 4 |

EXCLUDE - motor, house and life insurance policies.

EDUCATION AND TRAINING EXPENSES

34. Have you paid (for yourself or for someone else) any of the following during the past 12 months

- (a) fees for full time playschool, primary, secondary day/boarding vocational or 3rd level education
- (b) voluntary subscriptions (incl. payments for games, languages etc)
- (c) maintenance* of students receiving 3rd level education away from home
- (d) fees for part-time day, evening or correspondence courses or other tuition or training (dancing, driving, music, golf, etc. lessons and grinds).

YES NO
 Y N
 Y N
 Y N

IF YES TO ANY GIVE AMOUNTS PAID IN LAST 12 MONTHS

| Per. No. of student | Description of School, Payment and Course | Fees | Voluntary Subscription | Maintenance of 3rd level (only) students away from home |
|---------------------|---|-----------|------------------------|---|
| | | £/€ | £/€ | £/€ |
| | | £/€ | £/€ | £/€ |
| | | £/€ | £/€ | £/€ |

* Board, lodgings, living/recreational expenses during term time.

IN-PATIENT (INCL. 1 DAY STAY) HOSPITAL COSTS
(INCLUDE payments for private/semi-private room, all other costs and fees).

40. Did you pay your own or the cost of any other person's stay in hospital during last 12 months? YES.....Y for Per. No.N
 NO.....N

IF YES (i) How much did it cost in the last 12 months? _____

Total cost _____

VHI/BUPA refunds or direct payments _____

Refunds from private Health Insurance _____

Net hospitalisation cost _____

(ii) Total number of bed-nights or days paid for _____

State funded hospitals _____

Private hospital(s) _____

| AMOUNT | | Code |
|--------|-------|-------|
| £/€ | p/c | |
| | | 054 8 |
| | | 592 8 |
| | | 497 8 |
| | | X71 8 |
| | | X72 8 |

REFUND OF OUT-PATIENT MEDICAL EXPENSES

41. Did you receive from the HEALTH BOARD during the past 12 months any cash refund of expenditure incurred on prescribed drugs YES.....Y
 NO.....N

IF YES (i) How much was refunded by HEALTH BOARD in the past month? _____

(ii) How long a period did the refund cover? Period.....months

| | | |
|-------|-------|-------|
| | | 701 4 |
|-------|-------|-------|

42. Did you receive from VHI/BUPA during past 12 months any cash refund of out-patient expenses (e.g. G.P./specialist fees, drugs, X-rays, tests, etc), or did VHI/BUPA pay directly for any of these. YES.....Y
 NO.....N

IF YES, how much was refunded or paid by VHI/BUPA in past 12 months? _____

| | | |
|-------|-------|-------|
| | | 702 8 |
|-------|-------|-------|

SUPPLEMENTARY WELFARE ASSISTANCE

NOTE: This question must be handled VERY TACTFULLY and asked only of low income households where it could be relevant. IF YES TO ANY, enter approximate value received in last 12 months

43. During the last 12 months have you received any of the following welfare benefits provided by the Department of Social, Community and Family Affairs, or Health Board _____

| | | | |
|---|-----|----|-------|
| | YES | NO | |
| (i) Bottled gas allowance (instead of electricity where no ESB supply) | Y | N | |
| (ii) Back to school clothing and footwear allowance | Y | N | |
| (iii) Rent and mortgage interest supplement | Y | N | |
| (iv) Special once-off payments from Community Welfare Officer to meet exceptional needs | Y | N | |
| (v) Only if you consider it safe to do so (i.e. that it will not cause undue insult) and that it is relevant to the household you can ask:- Are you receiving payments from a charitable Organisation (e.g. SVDP) regularly to make ends meet? | Y | N | |

IF YES please state amount and period

Amount Period

| | | |
|-------|-------|-------|
| | | 925 8 |
| | | 926 8 |
| | | 930 8 |
| | | 927 8 |
| | | 574 |

HOLIDAY EXPENSES { INCLUDE -holidays, visits to relatives, etc.
 EXCLUDE - business trips and expenses

44. Did you (on your own behalf and for other) pay the cost of any holidays, of at least 4 nights away from home during the past 12 months? YES.....Y
 NO.....N

IF YES, please state:-

(i) how many separate holidays were paid for _____

In Republic _____

Elsewhere _____

(ii) combined total number of nights away from home _____

In Republic _____

Elsewhere _____

(iii) estimated combined total expenditure incurred by you and any other person you paid for (including transport, meals, entertainment, presents, etc). _____

In Republic _____

Elsewhere _____

(iv) of the total expenditure at (iii) above in respect of holiday expenditure in Northern Ireland or abroad how much was paid out in the Republic of Ireland (i.e. to travel agents, tour operators etc.) _____

(v) In relation to the holiday nights spent in the Republic please give the following details on nights spent and accommodation expenses

| | | |
|-------|-------|-------|
| | | 706 1 |
| | | 707 1 |
| | | 708 1 |
| | | 709 1 |
| | | 710 8 |
| | | 711 8 |
| | | 931 8 |

| | Number of nights spent away from home | Approximate expenditure on accommodation (excl. meals) | |
|-----------------------|---------------------------------------|--|-------|
| (a) Hotel/Guest House | | | X82 8 |
| | | | 833 8 |
| (b) Bed and Breakfast | | | X83 8 |
| | | | 834 8 |
| (c) House/Apartment | | | X84 8 |
| | | | 835 8 |
| (d) Caravan/Campsite | | | X85 8 |
| | | | 836 8 |

NOTE: Avoid double-counting if this question is also completed by another member of the household.

HOUSEHOLD BUDGET SURVEY

EXPENDITURE DIARY (HB.4)

| |
|--------------|
| 7 day period |
| 1st 2nd |

| Record 4 | | | | |
|------------------|------|------|--------|--------------|
| Reference Number | Area | Hld. | Person | 7-day period |
| | | | | |

STRICTLY CONFIDENTIAL

All particulars given in this survey will be treated as **strictly confidential**.

Please do **not** put your name or address on this diary.

REMEMBER

1. Record each separate purchase and payment – take particular care with beer, spirits, wine and cigarettes.
2. Distinguish any drink consumed with meals out, separately.

**CENTRAL STATISTICS OFFICE
SKEHARD ROAD
CORK**

LoCall – 1890 313 414
Phone – Cork (021) 453 5000

HOW TO COMPLETE THIS EXPENDITURE DIARY

General

1. This diary should contain a complete record of everything which **you yourself** pay for; other members of your household are provided with separate diaries.
2. Please record everything that you pay for during the seven days, whether it is paid for out of your own money, housekeeping money, from a loan or any other source, and whether payment is by cash, cheque, postal order, credit card, bankers order or other means. Please remember:
 - (i) Show each item, however small on a separate line and describe it in reasonable detail.
 - (ii) If you buy anything by part exchange, say so and give the amount paid after deducting the amount allowed in part exchange.
 - (iii) If you ask another member of your household or a neighbour to buy things for you, and you pay for them, details of purchases should be included in your own diary.
 - (iv) Purchases made by you on behalf of other people with money supplied by them should not be recorded in your diary.
3. Write down the **actual** payments you make each day even if the goods were delivered previously, or are going to be delivered later. Any goods ordered or delivered but not paid for should be included unless they are acquired through Budget Account or Credit Club (paragraph 5) or Credit Account or Credit Card (paragraph 4).

4. Credit Account at a Shop or Credit Card

If you have a Credit Account at a shop (e.g. local grocery) or if you have a credit card,

- (i) record any payments made in respect of this account or with the credit card during the week, for example enter "**payment to grocery account – £75.50**" or "**payment of Visa Card account – £30**".
- (ii) also record each item actually acquired each day through this account or with the credit card together with its cost, noting "**account**" or "**credit card**" in brackets.

5. Budget Accounts or Credit Clubs

If you pay anything into a Budget Account, Credit Club etc. during the seven days please

- (i) enter the payments made with a description of the Account or Club into which they are paid;
- (ii) record each article obtained through these accounts or clubs during the seven days, indicating that it is contained from such source and giving its retail value.

6. Installment Buying

If you start buying anything by installments on any of the seven days, say so, record the down payment made and state what you are buying as follows:

HP down payment on TV set £50.00

If during the seven days you pay installments on any goods which you are buying by instalments, give a description of the article and state what you paid, thus:

HP instalment on bicycle £10.00

7. Second-hand Purchases

If you buy any second-hand goods during the seven days please write "**second-hand**" after the description of the item.

8. Postal Orders and Money Orders

If you buy a postal order or money order on any of the seven days please record it on that day noting its value and poundage separately. If you pay for anything by postal order or money order during the seven days write "**by postal order**" or "**by money order**" after the description of the item. If an order is recorded in either of the two diaries, but has not been used by the end of the 14 days covered add a note to this effect.

9. Shopkeepers, Farmers etc.

If your household obtains any food or other goods from its own shop, farm or garden please state the amount of each item which is obtained each day with its approximate value at retail prices. Write "**own produce**" opposite each item from own farm or garden. Write "**not paid/own shop**" after any article obtained from a family shop which has not been paid for in cash.

10. Betting

If you make any bets during the seven days covered by this diary, please state what they are e.g. book-maker, totalisator, bingo, etc and give the amounts. If you received any winnings during the seven days please give details on page 5.

11. Cash Gifts or Allowances

If you give any gifts or pay any cash allowances during the seven days covered by this diary, please record the amount and indicate to whom it was given.

REFERENCE LIST OF IMPORTANT ITEMS OF EXPENDITURE

Of the hundreds of different items you could buy, the following is only a list of examples. Please check through the list in case it reminds you of any purchase which you have forgotten to record.

Food

Bread, cakes, buns, biscuits, flour.
Breakfast cereals, rice, tapioca, pasta, custard powder.
Beef, veal, mutton, lamb, pork, bacon, poultry, sausages, offal.
Fresh or smoked cod, haddock, plaice, herrings, other fish and tinned salmon, sardines.
Milk, eggs, butter, margarine, cheese, cooking fats and oils.
Tea, coffee, cocoa, chocolate drinks.
Sugar, honey, syrup, jam, marmalade.
Fresh, dried, frozen or tinned peas, beans and other vegetables.
Fresh, dried, frozen or tinned pears, peaches and other fruit.
Bottled or tinned orange, grapefruit, tomato and other fruit juices.
Salt, pepper, sauces, spices, mustard, vinegar.
Sweets, chocolate, ice cream, ice lollies.
Tinned and packet soups.
Baby foods.

Meals out

Meals in restaurants, cafes, canteens, fast food outlets and hotels.
Tea breaks at work.
Snacks, sandwiches, fish and chips.

Tobacco and Drink

Cigarettes, tobacco, cigars, pipes, lighters, lighter fuels.
Beer, ale, stout, wines, spirits, cider.
Soft drinks, cordials, squashes, soda water.

Clothing, Clothing Material, Footwear

Overcoats, raincoats, suits, shirts, skirts, trousers, hats and other outerwear.
Vests, pants, pyjamas, skirts, slips, corsets, brassieres, stockings, tights and other underwear.
Dress material, wool, thread, ribbons.
Boots, shoes, slippers, sandals.
Payments to clothing clubs.

Fuel and light, Household goods and Hardware

Coal, coke, gas, electricity, paraffin and other fuel oil, firewood, candles, nightlights, matches.
Soap, soda, cleaning powders, detergents, polishes.
Paint, distemper, wallpaper.
Dustbins, pails, brushes, brooms, tools, screws, nails.
China, glass, bowls, kettles, saucepans.

Furniture, Furnishings, etc.

Suites or separate articles of furniture.
Radios and hi-fi, television sets or parts, video recorders, pianos, music.
Mattresses, pillows, sheets, blankets, tablecloths, towels, curtains, tea cloths.
Carpets, rugs, linoleum, mats.
Fires, cookers, vacuum cleaners, refrigerators, wringers, washing machines, sewing machines, irons, electric lamps, bulbs and fittings.
Clocks, watches, jewellery, cutlery, suit-cases, handbags, sports goods.
Repairs to furniture, radio, TV and watches.

Travel

Journeys by rail, bus, air, sea, taxi, including fares to and from work.
Purchase, repairs and running costs of cars, motor cycles, cycles, push-chairs.

Other Expenditure

Cinemas, theaters, concerts, football, cricket, racing, dances.
Books, newspapers, magazines, stationery, toilet paper.
Lipstick, face powder, face cream, mascara, perfumes, shampoos, sanitary towels.
Shaving cream, hair cream, razors and blades.
Hairdressing (including tips), sponges, face cloths, nail brushes.
Cameras, photographic materials, developing and printing of films, hiring of video films.
Flowers, seeds, plants, garden tools, lawnmowers.
Animals and pets.
Toys, games, playing cards.
Stamps, postal orders, telegrams, phone cards, telephone calls.
Shoe repairs, laundry, dyeing and cleaning, domestic help.
Football pools and other betting, Bingo, Lottery etc.
Children's pocket money, birthday presents, money given to charities, raffle tickets.
Payments to chemists, doctors, dentists, oculists, opticians, chiropodists.
Holiday expenses.
Purchase of Savings Certificates, etc.
Payments of allowances and living expenses of dependents outside the household.