



**An Phríomh-Oifig Staidrimh**  
Central Statistics Office

## **Profile 2 Older and Younger**

Published by the Stationery Office, Dublin, Ireland.

To be purchased from the:

Central Statistics Office, Information Section, Skehard Road, Cork.

Government Publications Sales Office, Sun Alliance House,  
Molesworth Street, Dublin 2,

or through any bookseller.

Price €5.00

May 2012

© Government of Ireland 2012

Material compiled and presented by the  
Central Statistics Office.

Reproduction is authorised, except for commercial  
purposes, provided the source is acknowledged.

ISBN 978-1-4064-2655-7

<b>Contents</b>	<b>Page</b>
<b>Foreword</b>	<b>5</b>
<b>Historical view</b> How the age structure of the population has changed over time	<b>7</b>
<b>Sex ratio</b> The differences between males and females by age and area	<b>9</b>
<b>Age structure</b> An examination of the age structure of the population of the counties and cities	<b>11</b>
<b>Average age</b> We look at the rise in average age of the population	<b>16</b>
<b>Age dependency</b> Both the young and old dependency ratios in focus	<b>19</b>
<b>Age groups</b> A look at different groups across selected topics	<b>20</b>
<b>Statistical tables</b>	<b>33</b>
<b>Appendices</b>	<b>61</b>



## Profile 2 – Older and Younger

### Foreword

This report is the second of ten Profile reports examining in more detail the definitive results of Census 2011. This report looks at the age profile of Ireland in 2011 and examines topics such as the urban / rural divide, the age structure by county, young and old age dependencies and the sex ratio.

Other topics will be covered in future Profile reports to be released throughout the remainder of 2012 covering such topics as work, housing and disability; a complete list of planned publications and dates can be found on page 64 of this report. These more in-depth Profile reports are accompanied by two summary publications of census results; the first, *This is Ireland – Highlights from Census 2011, Part 1* was published in March 2012 and dealt with demographic factors, while the second publication *This is Ireland – Highlights from Census 2011, Part 2* is due for publication at the end of June 2012 and will cover socio-economic themes.

#### Web tables

All the data published in this and other reports are available on the CSO web site (at [www.cso.ie/census](http://www.cso.ie/census)).

#### Small area data

Small area data is an important output from the census and we will be bringing you a complete set of tables for all the standard layers of geography, such as Electoral Division and Local Electoral Area, as well as tables for the new geographic unit, called Small Areas, which will provide data for uniform areas of typically 80 to 100 dwellings.

#### Interactive maps

In co-operation with the All Ireland Research Observatory (AIRO) summary census data is now available in thematic maps for Electoral Divisions and all Small Areas on the AIRO web site. This development will be expanded on later in the year when the full range of Small Area data will be made available in thematic maps on the AIRO site. Just follow the link from the web site [www.cso.ie/census](http://www.cso.ie/census).



Gerry O'Hanlon

Director General

24 May 2012



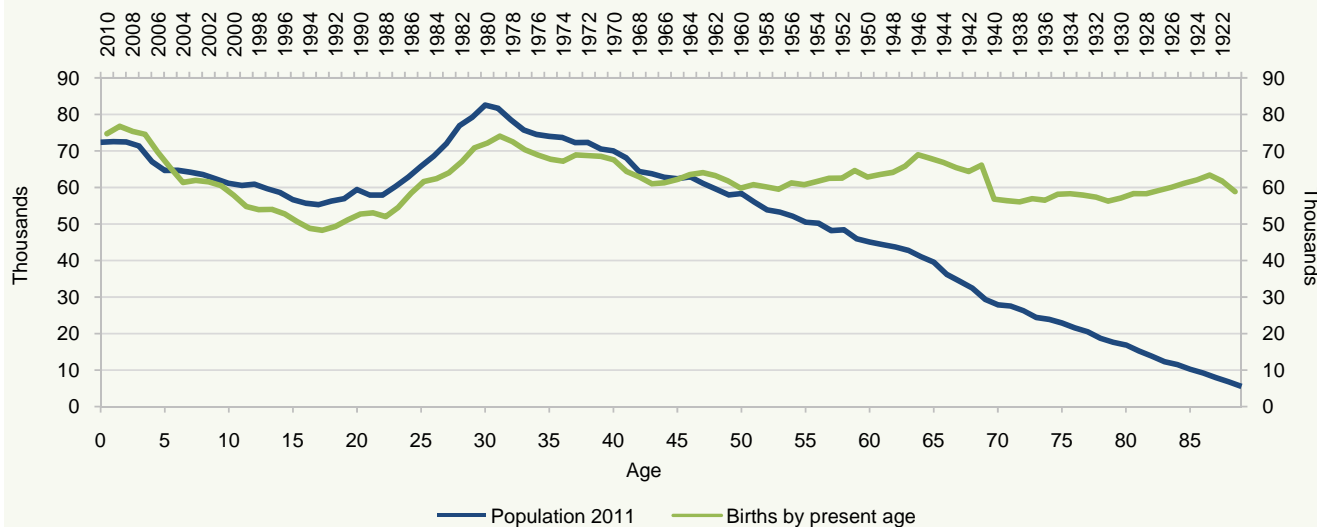
## Our population over the past 85 years

The factors which affect population change over time are births, deaths, immigration and emigration. Figure 1 shows total population at each age compared with the number of births recorded in the year they were born. The comparison is, as might be expected, particularly striking.

The births line clearly illustrates the high and low points in births over the past fifty years while the effect of deaths on the population after age 50 is noteworthy.

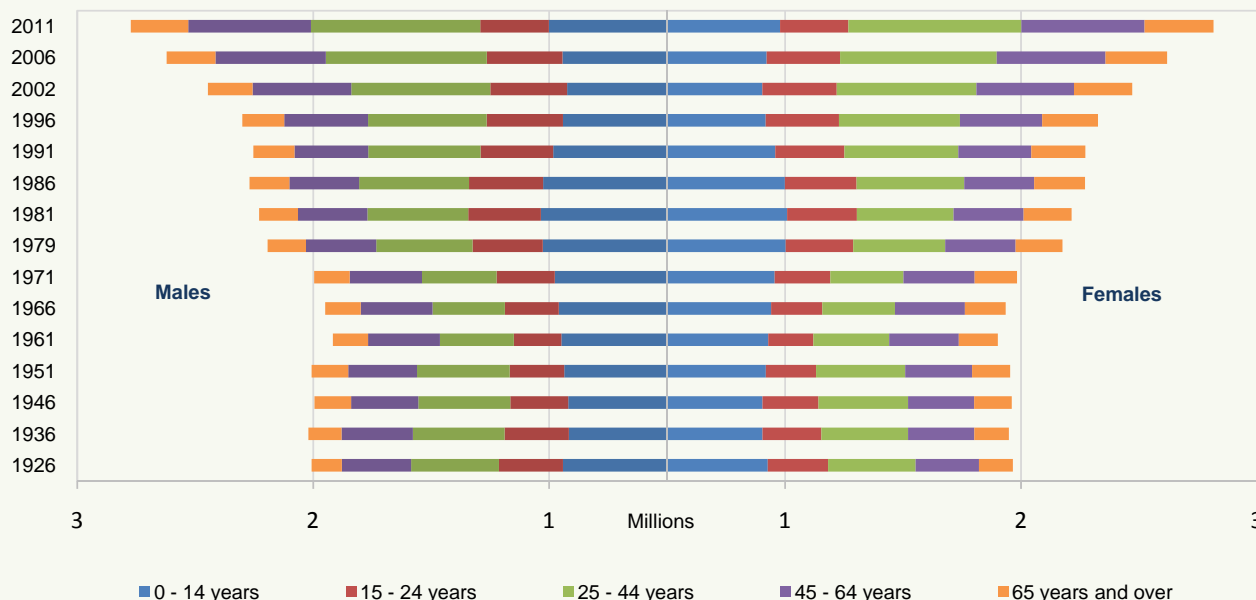
The effects of recent net inward migration can also be clearly seen in the gap between the total population and total births for the younger age groups.

**Figure 1 Births at projected age in 2011 and total population, 2011**



The graph below (Figure 2) shows the age structure of the total population from 1926 to 2011. The population increased by 54 per cent overall during the period with the most significant increases in the groups aged over 25, all of which showed increases in excess of 85 per cent.

**Figure 2 Change in population structure by age group, 1926-2011**



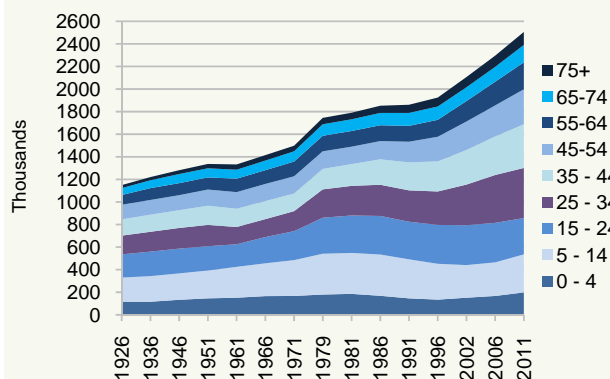
## Population structure by age group for each province since 1926

Leinster is the only province with uninterrupted population growth over the entire period 1926 to 2011 with its population more than doubling. Munster's population, although experiencing periods of decline up to the early 1960s experienced more modest growth overall.

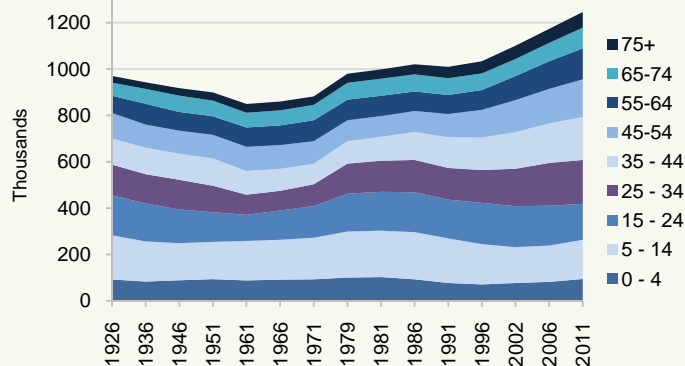
In contrast, however, the populations of Connacht and Ulster (part) experienced more severe population decline continuing until the 1970s. In fact, the populations of both provinces are still slightly lower than in 1926 having experienced slower and more erratic recovery with most notable growth in the 30-54 year age groups.

## Population by age group by Province 1926-2011

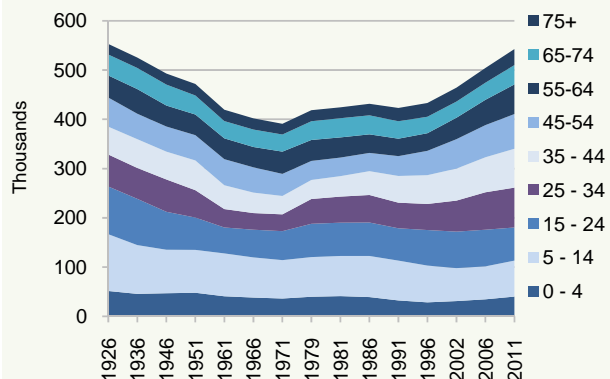
**Leinster, population 2,504,814**



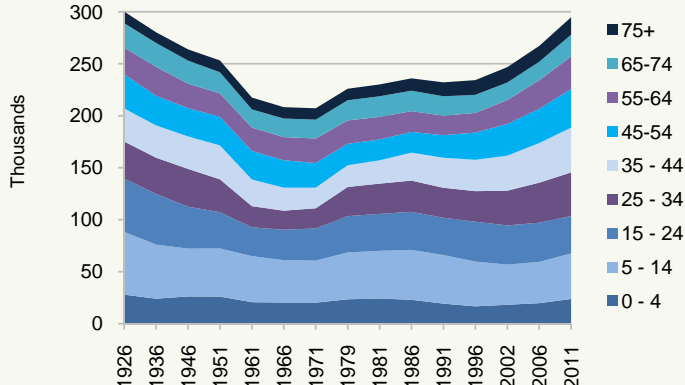
**Munster, population 1,246,088**



**Connacht, population 542,547**



**Ulster, population 294,803**



## It's a fact!

**118%** The increase in Leinster's population since 1926

**1.9%** The decrease in Connacht's population since 1926



## More women or men?

Up to the mid-1980's the trend was for more men than women in the State, though the ratio varied greatly by province with Leinster having consistently fewer males. Since the mid-1980s the overall trend has reversed with a tendency for there to be slightly more females.

Census 2011 showed the lowest ever sex ratio for the State with 981 males per 1000 females.

The graph below shows the ratios by age. The dominance of boys over girls as a consequence of higher births is evident in the line for 0-14 year olds. The fall in the ratio for those of working age can be seen in the late 1940s and again in the 1960s – a period of high emigration from Ireland. The pattern of consistently more women than men in the over 65s is starkly evident though gains in more recent years are also well illustrated.

The overall ratio, in black, shows a gradual fall from 1979 onwards with the exception of 2006 when very high first-wave inward migration led to more males; this has now reverted as a result of second-wave migration of more females in the last intercensal period.

Figure 3 Ratio of males per 1,000 females by Province, 1926-2011

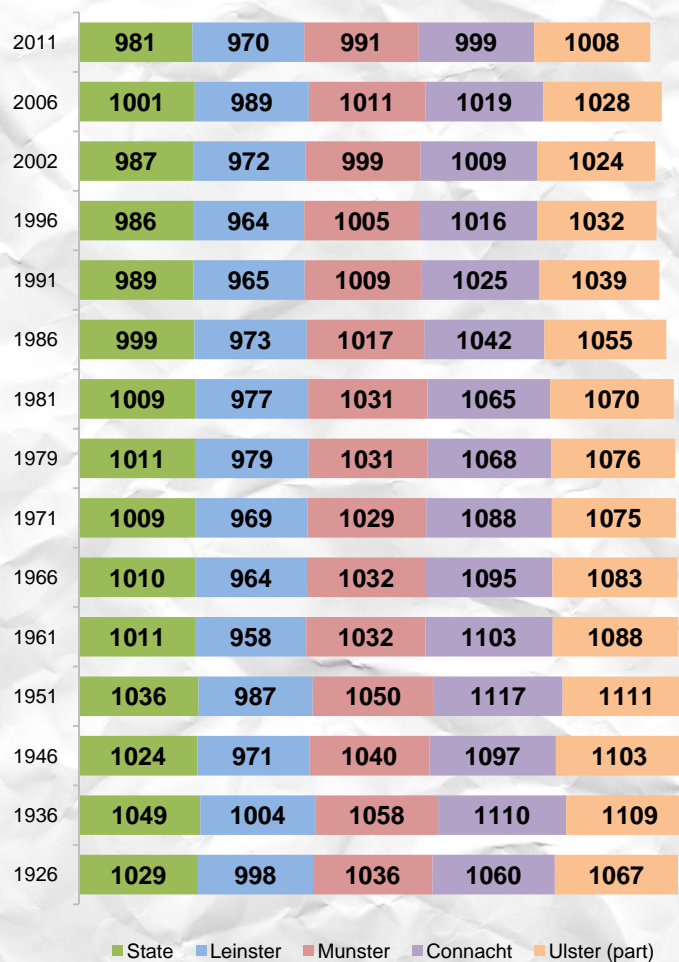
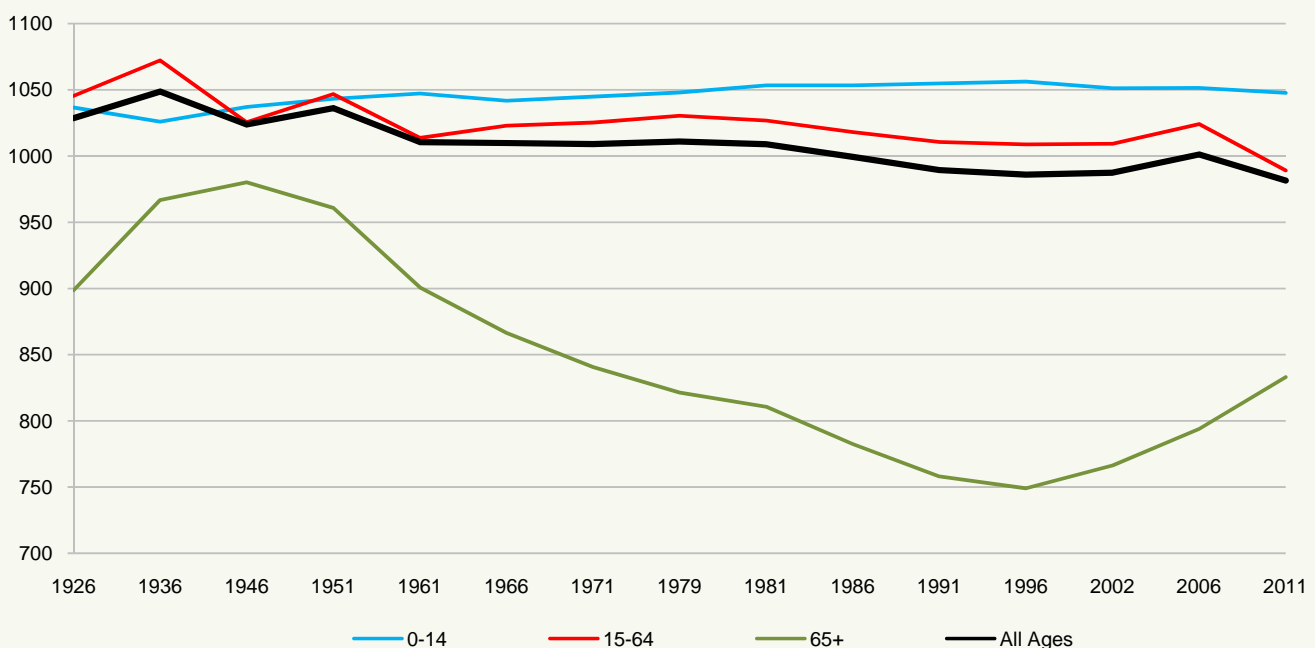


Figure 4 Sex ratio by age group 1926-2011



## Men stay in the country..

Figure 5 shows the ratio of males to females in urban and rural areas. The excess of males over females in rural compared with urban areas is apparent for almost all age groups as illustrated by the green lines on the right of the graph.

## ...while women flock to towns

The urban rural split is most apparent in the 20-30 age groups when, despite a swing in the sex ratio to slightly favour women overall, it becomes clear that the number of women far exceeded the number of men in urban areas while the opposite is true of rural areas. This split is less apparent in the 30-45 year olds, the 'nesting' years, but becomes pronounced again in the groups aged 45 and over.

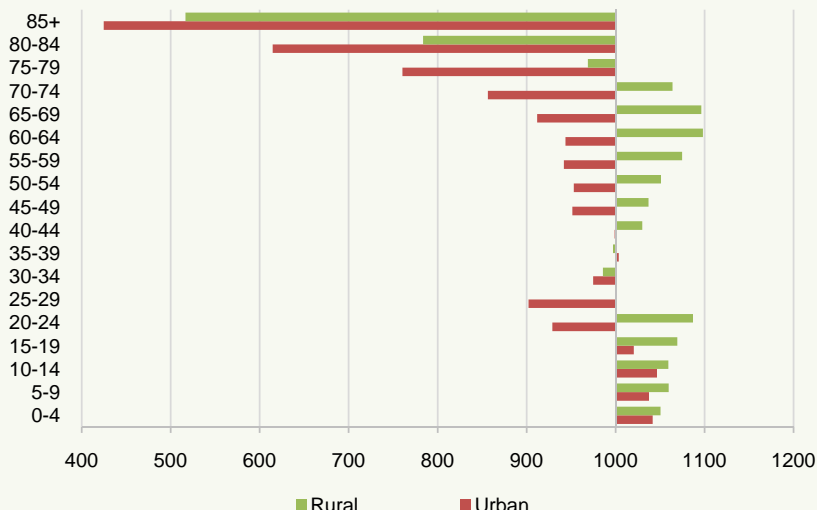
## Upsetting the balance

When examining the sex ratio by age the trend is for more males than females in the age groups 0 – 19 and more females than males aged 65 and over, due primarily to the demographic affects of births and deaths. The intervening age groups are more prone to the effects of migration which can lead to strongly fluctuating sex ratios as illustrated in Figure 6.

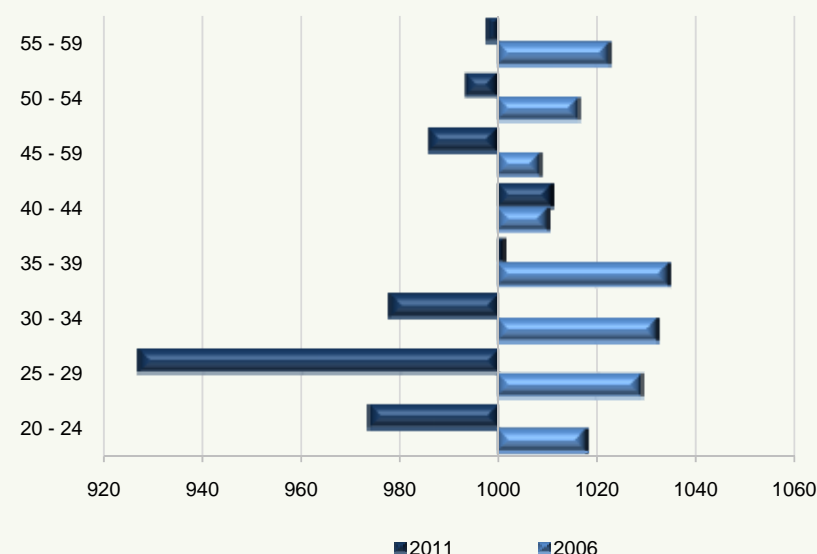
The graph shows the effect of migration on the balance between males and females; the excess of males in each of the age groups from 20-34 in 2006 completely reversed by 2011 as a consequence of higher inward migration of women over men (as discussed in *This is Ireland Part 1*). The switch is most stark in the 25-29 age group where a sex ratio of 1030 in 2006 fell by 10% to 927 in 2011. In effect there were more than a hundred fewer men per 1000 women in this age group than 5 years previously. There has been a similar, though less dramatic, effect in the groups aged between 45 and 60.

Tables page 40

**Figure 5 Males per 1000 females by age group in urban and rural areas**



**Figure 6 Sex ratio for 20-59 age groups, 2006-2011**



## It's a fact!

- 10%** The fall in the sex ratio in the 25-29 year age group since 2006
- 6** The age at which the largest sex ratio was recorded
- 7** The difference in the sex ratio between urban and rural areas for the 35-39 age group – the only age group where there are more men than women in urban areas

# Age structure

## Population 2011

The population pyramid in Figure 7 shows the age structure of the Irish population male and female as recorded on Census Night 2011.

The very high births in the late 1970s and early 1980s, which reached a peak in 1980 with 74,000 births (today's 31 and 32 year olds) is a strong distinguishing feature of the graph, as is the sharp fall in births over the subsequent 15 year period reaching a low point in 1994 (today's 17 and 18 year olds).

The recent recovery in births, particularly in the last four years, is also clearly evident.

The pyramid shape from age 30 and over reflects the effects of mortality as the population grows older.

Figure 7 Population 2011



## What is a population pyramid?

A population pyramid is a type of graph which shows the male and female population at each age. For example, Figure 7 shows the percentage of males at each age to the left and the corresponding percentage of females to the right at each year of age at Census 2011.

This graph is useful because it shows at a glance how the population is structured in terms of males and females and the proportions of younger and older people and at each age in between.

Comparison of the population pyramids compiled in different years (e.g. from Census 2006 and Census 2011) indicate how the population has changed over time and comparisons between the pyramids for different geographical areas can demonstrate the different characteristics of the population of those areas.

The population pyramid gets its name from the typical pyramid shape of these graphs which generally start from a broad base, showing the number of babies born and shows declining numbers as age increases due to falling life expectancy. However, the pyramid can also be affected by historical factors such as high or low birth rates at different historical periods which result in a bulge or narrowing in the pyramid as this group ages. Also, significant migration patterns can affect the shape of the pyramid when comparing the position in different years.

## It's a fact!

**76,762** The number of births in 2010 – the highest ever recorded number of births

**48,255** The number of births in 1994 – the lowest ever recorded number of births

**74,064** The number of births in 1980 – the previous high point prior to recent years

# Age structure by county

## Different populations - different pyramids

The structure of the Irish population is not distributed evenly throughout the whole country. An examination of the population of the 34 administrative counties in the State illustrates the different characteristics of the population of each geographical area. While the population of each county is unique and often shows a combination of different attributes, the population pyramids for each county can be divided into some broad groupings which demonstrate similar patterns.

Figures 8 to 13 show population pyramids for a sample of counties to demonstrate these different characteristics.

### Carlow

The age structure for Carlow is similar to that of the State overall with a clear pyramid shape from age 30 up, a decline in the population from age 30 down to age 15, followed by a recovery in the younger age groups, reflecting the increasing birth rates in more recent years.

Other counties with a broadly similar structure are Laois, Louth, Kilkenny, Wexford, Wicklow, Longford, Cork, Galway, Meath, Cavan and Kildare, although each show different characteristics due to slightly different populations of males and females at each age group.

Figure 8 Carlow, population 54,612

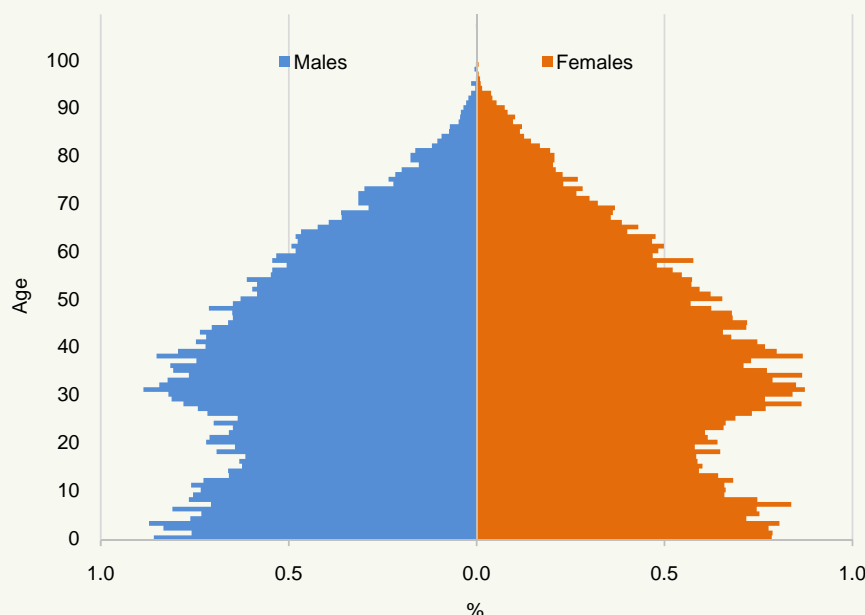
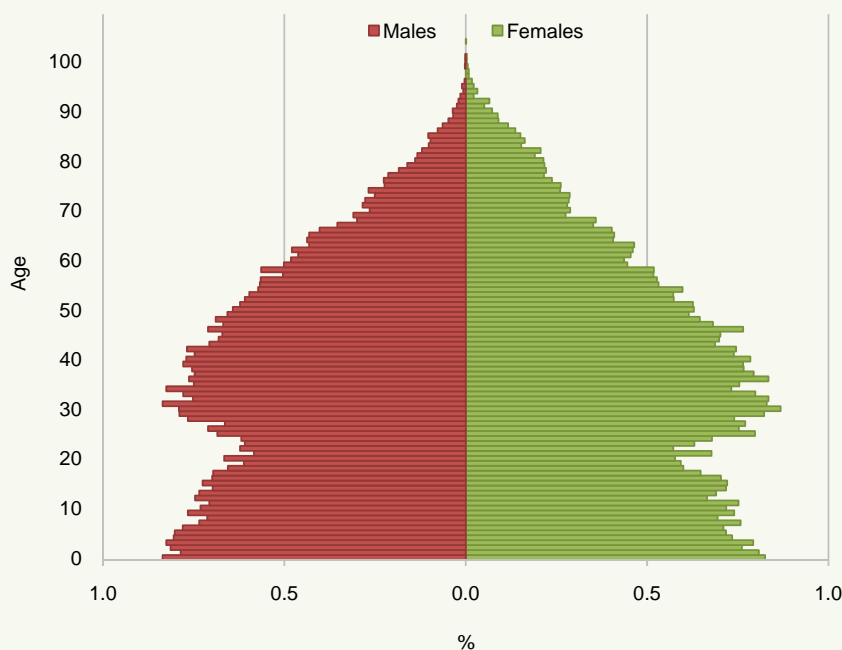


Figure 9 Westmeath, population 86,164



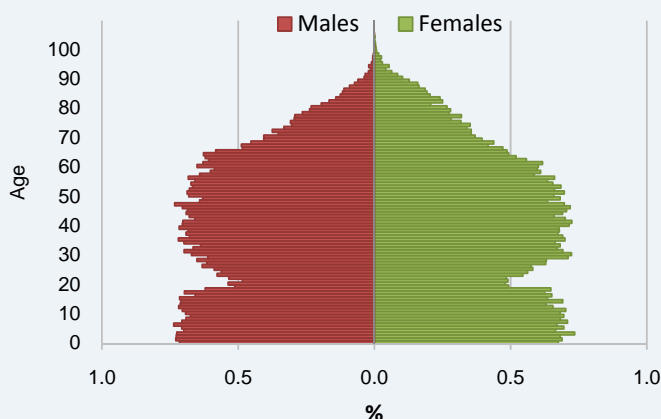
### Westmeath

Westmeath's graph, though similar to Carlow, has a more rounded shape from age 30 up with a higher population in the 30-70 age groups. While also showing the typical decline in population from age 30 to 15 we can see a faster recovery in the 15 to 20 year olds.

Other counties with a broadly similar structure are Clare, Tipperary, Limerick, Offaly, Monaghan and Dun Laoghaire- Rathdown.

# Age structure by county

**Figure 10 Mayo, population 130,638**



## Mayo

Mayo's graph shows an older population with no significant decrease in the population between the ages of 30 and 65 after which there is a steep decline up to age 75.

Unlike the State overall, where the low point in the total population is mirrored by births 17 years previously, for Mayo the low point is age 21 reflecting the rural nature of the county as young people move away to work and study.

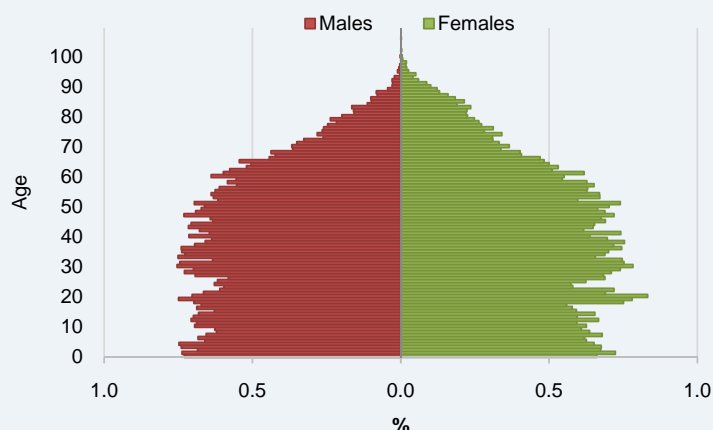
Other counties to show a broadly similar structure are the predominantly rural counties of Donegal and Kerry.

## Sligo

With a total population of less than half that of Mayo the graph for Sligo shows very little fluctuation across all age groups up to the elderly ages.

The typical bend in the graph seen for the State overall and centered around those aged 17 is compensated for by the presence of a higher number of young people in the student years, no doubt due to the presence of third level institutions.

**Figure 11 Sligo population 65,393**



## Fingal

Fingal is the youngest county in the country. The very high number of people in their 30's - the peak childbearing years for women - is starkly illustrated as is the high number of children that can be associated with this age cohort.

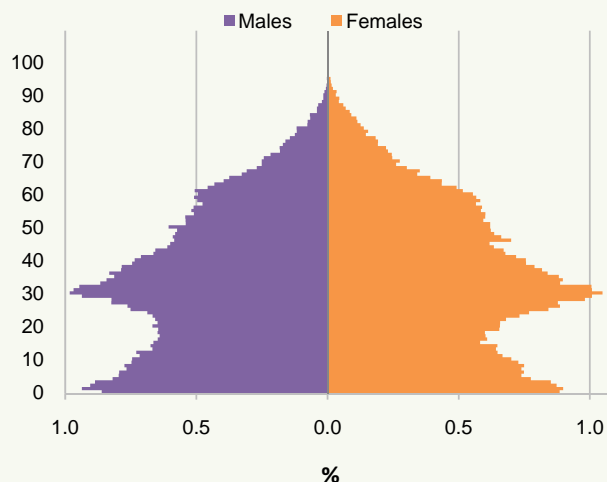
**Figure 12 Fingal, population 273,991**



## South Dublin

South Dublin's graph is noteworthy for a disparity between males and females in some age groups with more females in their twenties and early thirties and in their fifties, contributing to one of the lowest sex ratios of all counties.

**Figure 13 South Dublin, population 265,205**





# Age structure of cities

## Four cities

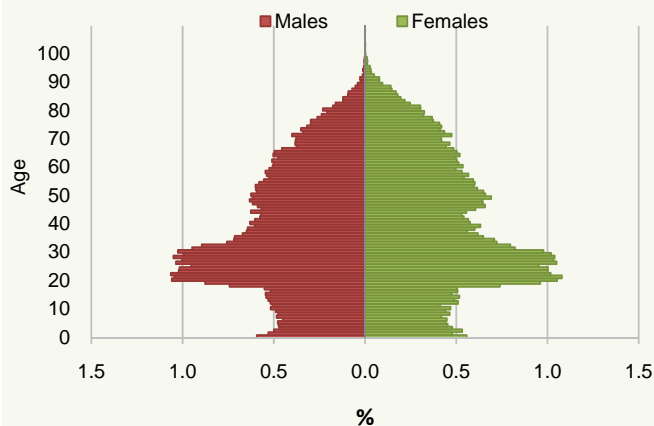
The structure of population in each of the cities is shown in the population pyramids below.

The main characteristic of the city populations is the large increase in population in the 20 – 40 age groups associated with the migration of people in their twenties and thirties to cities. City populations are also characterised by smaller young and elderly populations as people tend to move away from cities to raise their families and retire.

### Cork

The graph for Cork city shows the sudden increase in the population at age 18 as people move to the city to work and study. The numbers start to fall as people move out to the suburbs to raise families. This is further borne out by the low number of young children in the city. The higher than average number of older people can also be seen at the top end of the pyramid.

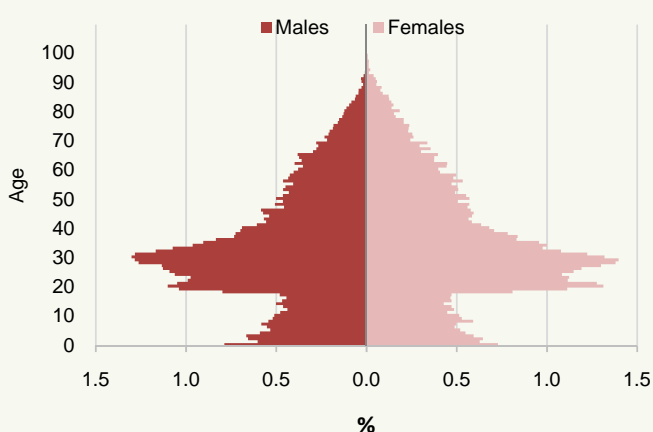
Figure 14 Cork city, population 119,230



### Galway

Galway city has a much younger population and shows the greatest proportional increase in the 20-30 population of all the cities.

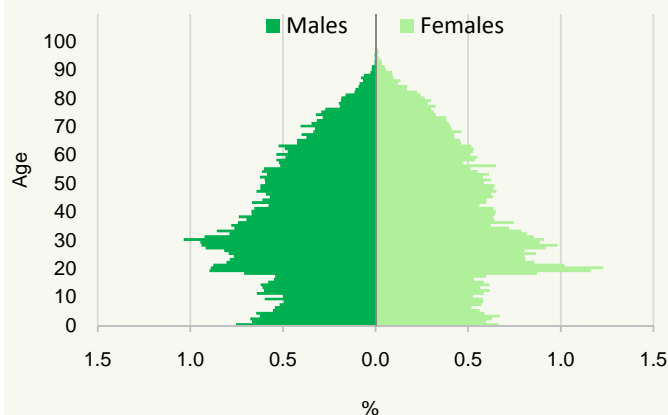
Figure 15 Galway city, population 75,529



### Limerick

The graph for Limerick city shows the typical bulge associated with the university years of late teens and early twenties while the low number of births associated with cities is also evident.

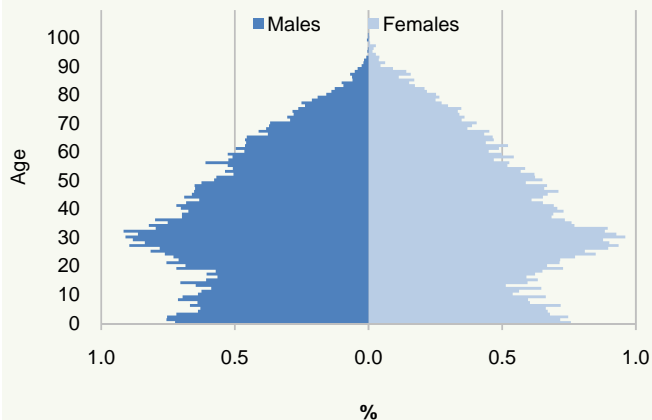
Figure 16 Limerick city, population 57,106



### Waterford

The graph for Waterford city is very similar to the State overall and shows few of the characteristics of the other city populations in general.

Figure 17 Waterford city, population 46,732

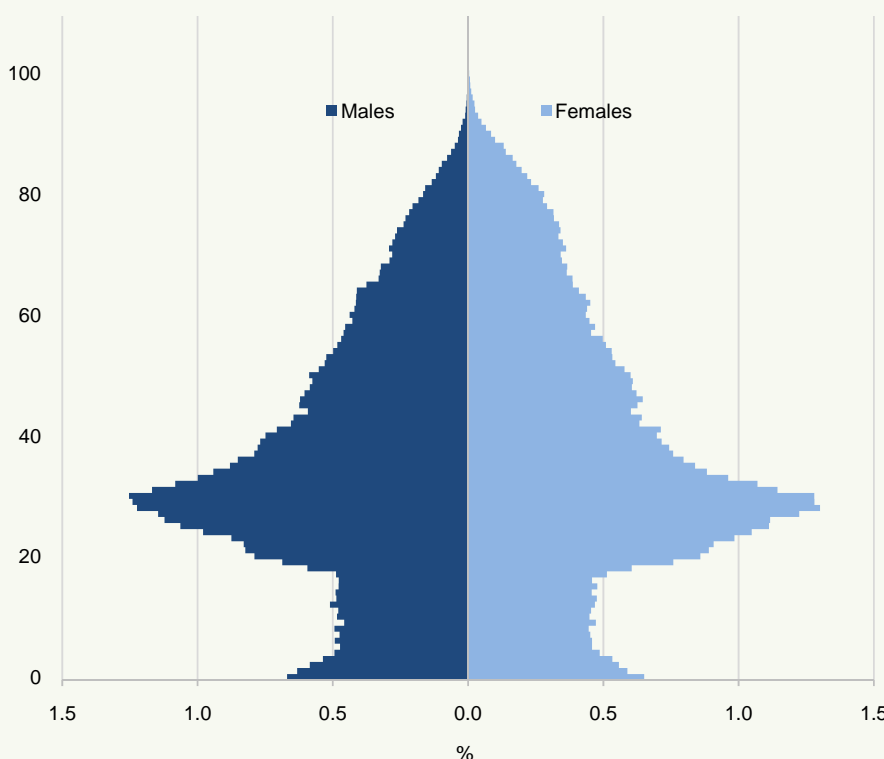


## Dublin

As a capital city Dublin is strongly influenced by both internal and external migration, particularly for those in their twenties and thirties, and its population pyramid reflects this.

While the recent increase in births for the State overall is evident, it is far less pronounced in Dublin; indeed the number of school children is fairly stable at about 5,000 for every year of age. From age 20 onwards the graph shows the effect of migration with numbers increasing steadily up to age 30 - the high point of the population. A sharp fall in population follows for those in their 30's and early 40's - the childbearing years; thereafter the graph shows the more typical gradual decline.

Figure 18 Dublin city, population 527,612



## Urban

Finally, Figures 19 and 20 compare the population in the aggregate urban and rural areas in the State to illustrate how urban and rural populations differ.

The urban population peaks at age 30 reflecting young adults moving to work and study in towns and cities.

## Rural

Rural areas show a mirror image, with a sharp decline in population in the twenties as young people leave home for urban areas.

However, this trend is reversed in the thirties and forties with the high point in the population at age 40.

Figure 19 Urban areas, population 2,846,882

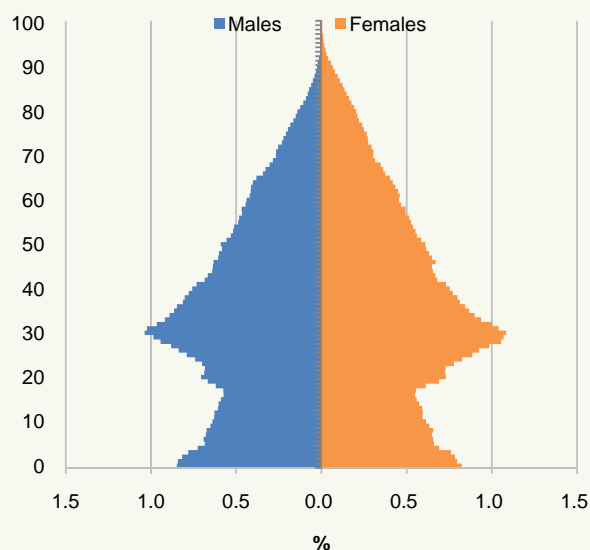


Figure 20 Rural areas, population 1,741,370



# Average age ...by county

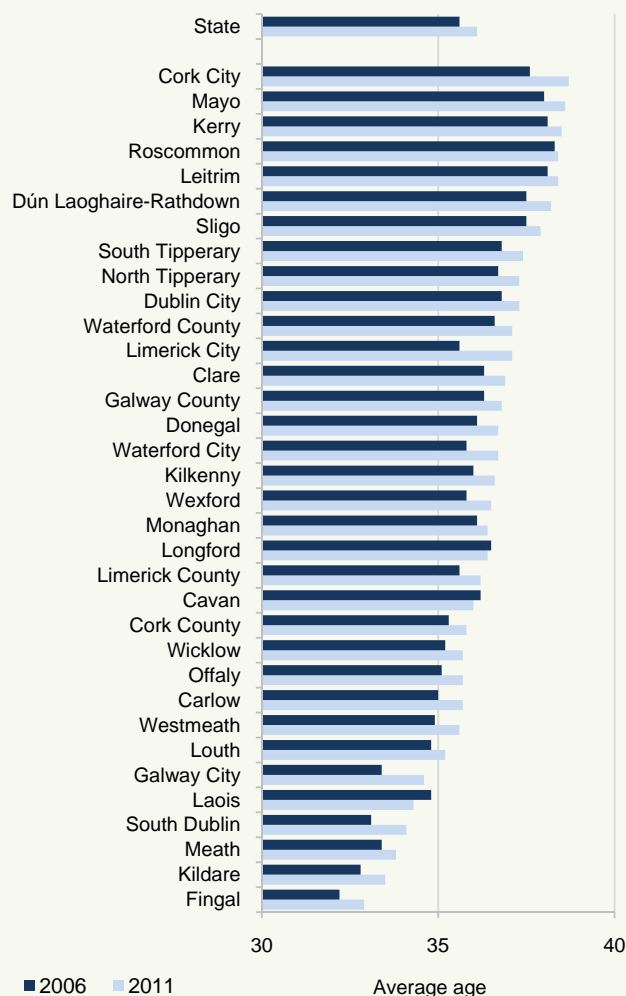
## Growing older

Figure 21 shows the average age of the population for each county and city administrative area, showing that in 2011 Cork city had the highest average age at 38.7 compared to 36.1 for the State as a whole. Fingal had the lowest average age of any county at 32.9.

It is interesting to examine the change in the average ages of the population in each county. Figure 22 shows that the fastest ageing areas were the cities, with Limerick city increasing by 1.5 years and Galway and Cork cities both showing an increase of over one year since 2006. Three counties are getting younger with Laois, Cavan and Longford showing a lower average age than in 2006.

Tables page 38

**Figure 21 Average age by County 2006-2011**



**Figure 22 Change in average age by County, 2006-2011**



## It's a fact!

**5.8** The difference in years in the average age of the oldest and youngest counties, Cork city (38.7 years) and Fingal (32.9 years).



## Older female population

Figure 23 shows the difference in average age between the male and female population for each county. It shows that the female population was older than the male population by about 1.3 years for the State overall. This is to be expected given the higher male birthrate combined with higher female life expectancy.

Looking at the difference at county level shows that the females in Dún Laoghaire-Rathdown were substantially older on average than males, with an age difference of 2.5 years, followed closely by Cork city with an age difference of 2.3 years.

Laois showed the smallest difference of only 0.3 years between the average age of women and men.

It is also notable that the age difference was, in general, greater in cities, with Cork, Dublin and Waterford ranked in the top four.

## Regional Authority Areas

Figure 24 shows the breakdown of average ages by Regional Authority Area. The West had the oldest population at an average age of 37.2 years, with females aged half a year older and males half a year younger.

The Mid-East region had the youngest population of all areas with an average age of 34.2 years, almost two years younger than the average for the State overall.

Figure 23 Years by which female exceeds male average age by county 2011

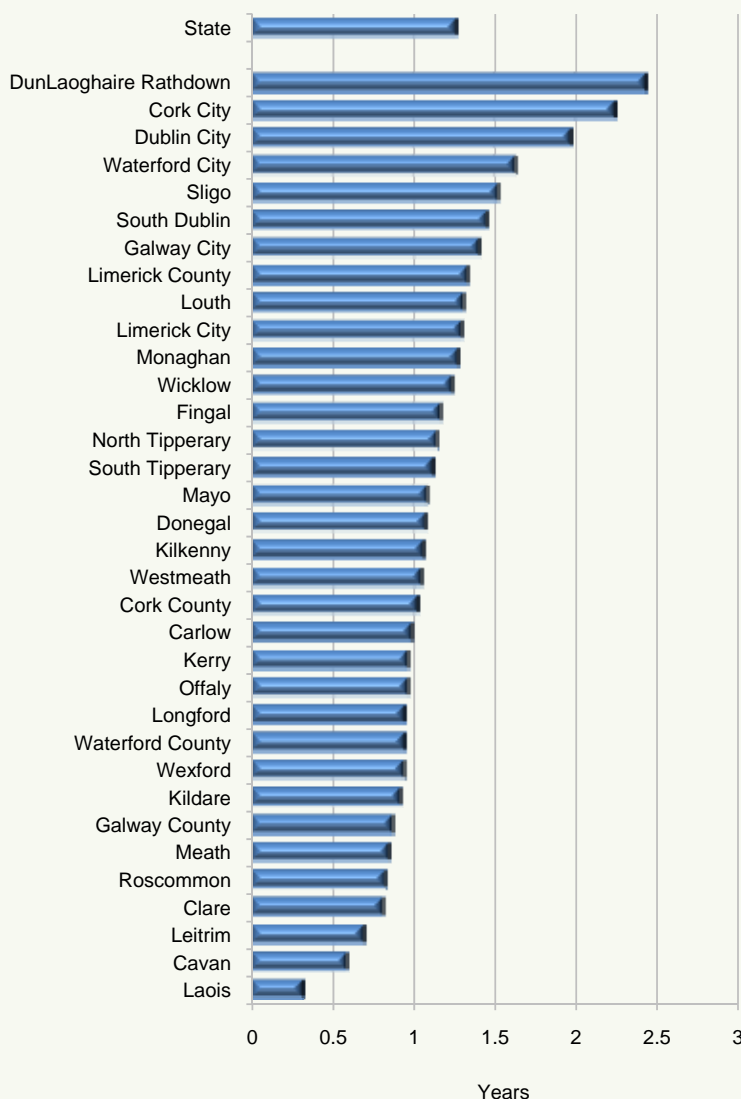
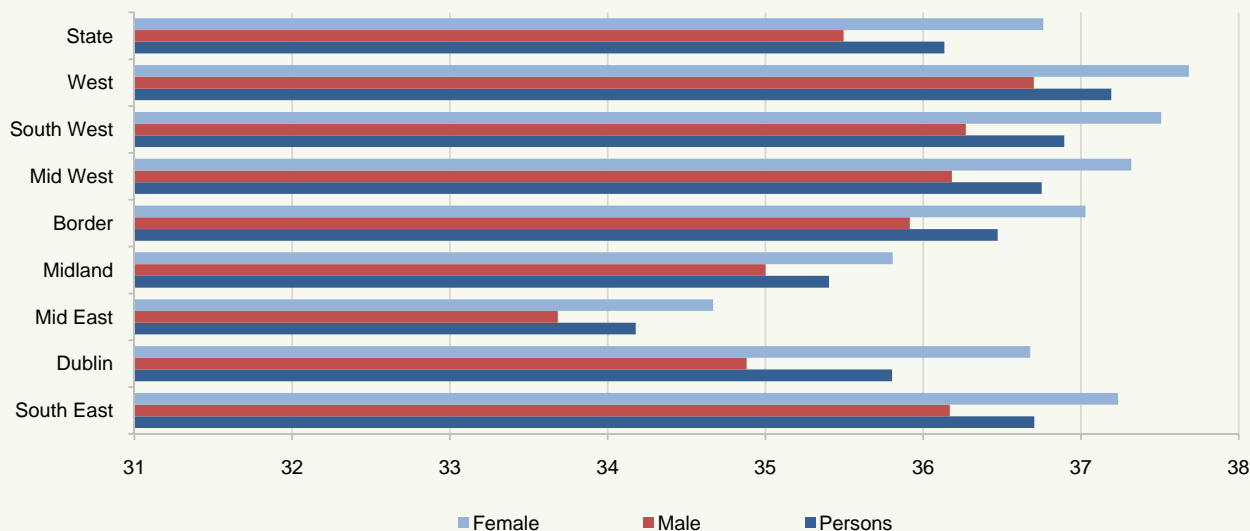


Figure 24 Average age male and female by Regional Authority Area



## Older rural population

Figure 25 shows the difference between the average age in urban and rural areas in each county, excluding the cities which contain no rural areas and showing that the rural population was on average almost two years older than in urban areas.

South Dublin, albeit with a very small rural population (only 6,328 persons compared with 240,067 persons in urban areas) had an age gap of 7.3 years between the rural and urban parts of the county. The counties of Meath, Limerick, Fingal and Laois had rural populations which were more than 4 years older than their urban counterparts.

At the other end of the scale, the counties of Wexford, South Tipperary and Louth were more homogenous in age with a gap of less than half a year.

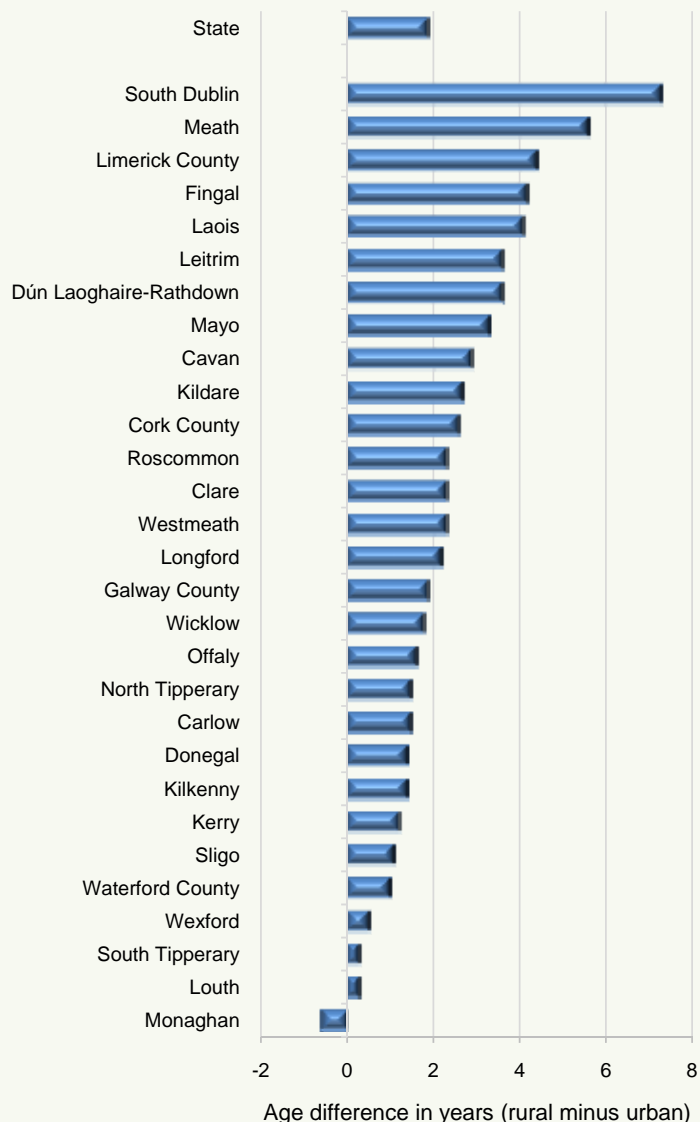
Only Monaghan had a younger rural population, with its urban inhabitants on average 0.6 years older than rural dwellers.

Table 1 shows the administrative counties with the oldest and youngest urban and rural populations. Kildare had the youngest rural population with an average rural age of 35.3 while also ranking in the top five youngest urban populations aged 32.6 years. Meanwhile Dún Laoghaire-Rathdown had the oldest rural population at 41.8 years and the second oldest urban population at 38.2 years on average. (It should be noted that Dún Laoghaire-Rathdown's rural population is very small – 1,907 out of a total population of 206,261.)

Meath had the youngest urban population with an average age of 31.4 and Cork city the oldest at 38.7 years on average.

*Tables page 38*

**Figure 25 Average age difference between rural and urban areas of each county**



**Table 1 Administrative counties with the oldest and youngest urban and rural populations**

Urban Area				Rural Area			
Youngest		Oldest		Youngest		Oldest	
Meath	31.4	Cork City	38.7	Kildare	35.3	Dún Laoghaire-Rathdown	41.8
Laois	32.2	Dún Laoghaire-Rathdown	38.2	Louth	35.4	South Dublin	41.2
Fingal	32.5	Kerry	37.8	Monaghan	36.2	Mayo	39.6
Kildare	32.6	Dublin City	37.3	Laois	36.3	Roscommon	39
Limerick County	33.3	Sligo	37.2	Offaly	36.4	Kerry	39

# Age dependency

## Young and old

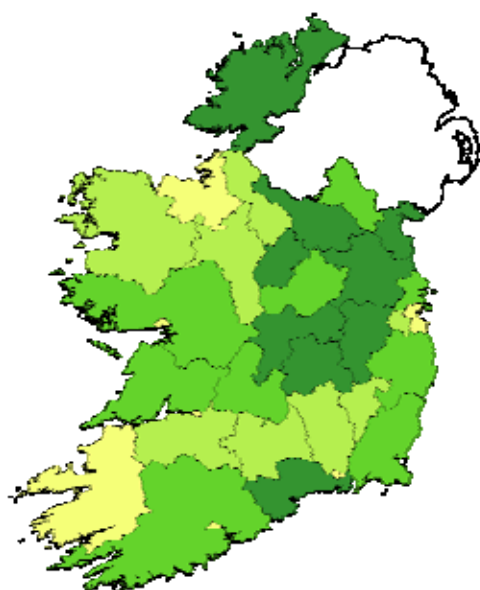
Age dependency shows the ratio of the old and young population to the population of working age. The report *This is Ireland - Highlights from Census 2011, Part 1* showed that the total dependency ratio for the State increased from 45.8 per cent in 2006 to 49.3 per cent in 2011, an increase of 3.5 per cent.

The young dependency ratio is the number of young people aged 0 -14 as a percentage of the population of working age as shown in Map 1. In April 2011 this rate stood at 31.9 per cent for the State overall but was significantly lower in the cities with a rate of 20.9 per cent in Cork and 21 per cent in Dublin. The rates were highest in Meath (38.3%), Laois (37.9%) and Cavan (36.6%) all of which had young and fast growing populations.

Old dependency, shown in Map 2 stood at 17.4 per cent for the State, with significant differences at county level. Counties Mayo and Leitrim had the highest old dependency ratios at 23.3 per cent, while Fingal (10.6%) and Kildare (11.7%) had the lowest.

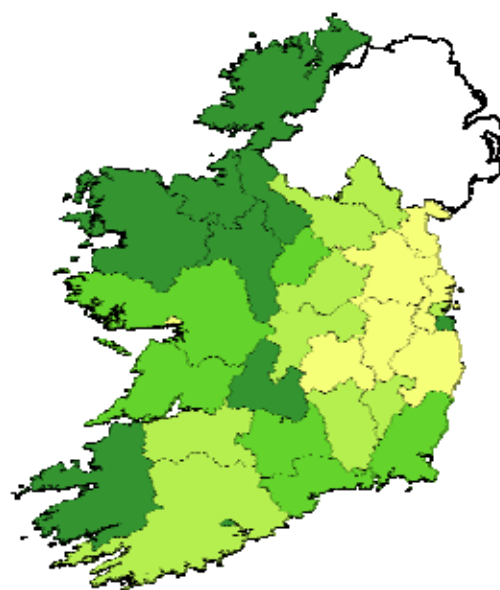
Tables page 39

Map 1 Young dependency by county (%)



20.9 - 30.8  
32.0 - 34.0  
34.1 - 35.4  
35.5 - 38.3

Map 2 Old dependency by county (%)



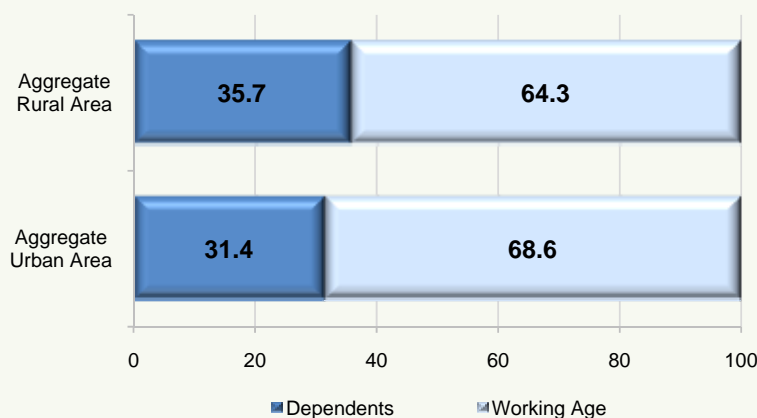
10.6 - 16.7  
16.9 - 18.9  
19.0 - 20.4  
20.6 - 23.3

## Urban and Rural

Figure 26 shows the proportion of dependents in urban and rural areas as a percentage of the total population. As expected there was a greater proportion of the working age population in urban areas, resulting in lower dependents.

Overall young and old people in rural areas accounted for 35.7 per cent of the population resulting in a dependency ratio of 55.5 per cent, compared with urban areas where the dependent population was smaller at 31.4 per cent of the total with an overall dependency ratio of 45.8 per cent.

Figure 26 Dependents as a percentage of total population, 2011



## Pre-schoolers on the increase

Census 2011 shows a population of pre-school children aged 0-4 of 356,329, an increase of 17.9 per cent since 2006 compared to the 8.2 per cent in the population of the State as a whole, bringing the numbers back to just above the levels in the early 1980s as shown in Figure 27.

Leinster was the only province to have exceeded the 1981 population level. The population of each of the other provinces, though on the increase, was still lower than the 1981 level.

Map 3 shows the change in the pre-school population by county since 2006. The greatest increase in pre-school children was in Laois at 37.1 per cent, followed by Cavan (30.2%) and Monaghan (26.8%), while the slowest growth was recorded in Waterford city (5.3%).

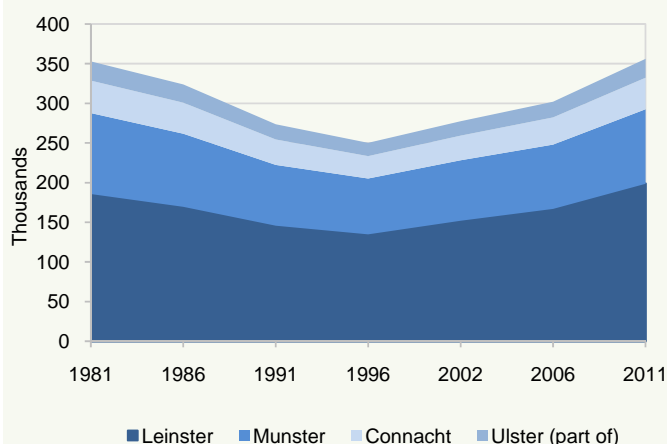
## Where they live

Figure 28 shows the percentage share of the usually resident pre-school children analysed by the type of area they lived in compared with the total population.

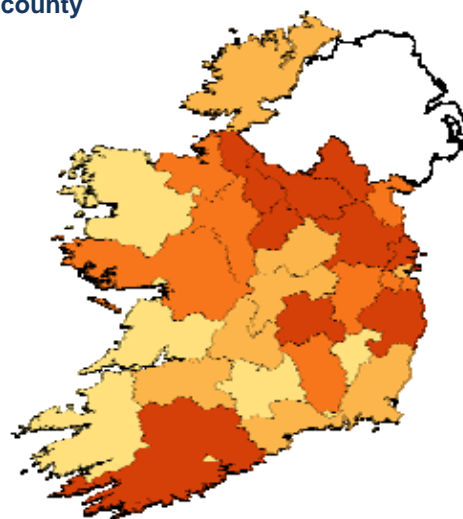
While almost 30 per cent (104,796) were living in one of the 5 cities, the graph shows how they were under-represented in the cities and rural areas compared with the population overall; against this, pre-school children were over-represented in towns of all sizes.

Tables page 41

**Figure 27 Population of age 0-4 by province 1981-2011**

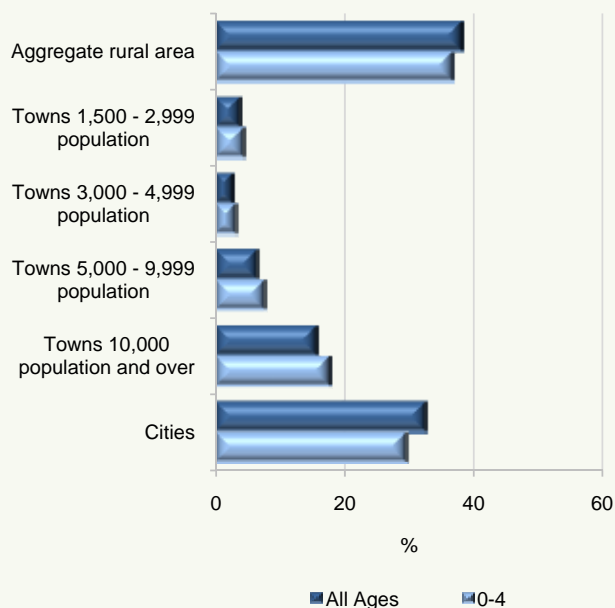


**Map 3 Change in pre-school population since 2006 by county**



5.3% - 13.8%    14.0% - 16.2%  
16.7% - 18.3%    19.8% - 37.1%

**Figure 28 Proportion of 0-4 age group in private households by area type compared to total population**



## It's a fact!

**72.2%** The increase in the pre-school population in Fingal since 2002

**23%** The growth in the pre-school age groups in urban areas

**10.9%** The decrease in the pre-school age group in Cork city since 2002

# Pre-school (0-4)

## Accommodation

The change in accommodation type for pre-school children in private households between 2006 and 2011 is shown in Figure 29 in actual and percentage terms. While detached houses accounted for the majority of residences at 42.6 per cent of the total, the largest actual change has been in semi-detached accommodation.

While those living in flats and apartments accounted for only 7 per cent of all pre-school children there has been a 50.3 per cent increase in those living in this type of accommodation since 2006, compared with more modest increases of 24 per cent in semi-detached houses, 24.5 per cent in terraced and 9.9 per cent in detached houses.

The majority of pre-school children lived in non-rental properties. However, the proportion living in rented properties has also increased significantly in the past decade rising from 22.3 per cent in 2002 to 34.7 per cent in 2011 as illustrated in the graph at the bottom of the page.

Figure 29 Change in accommodation for 0-4 age group, living in private households 2006-2011

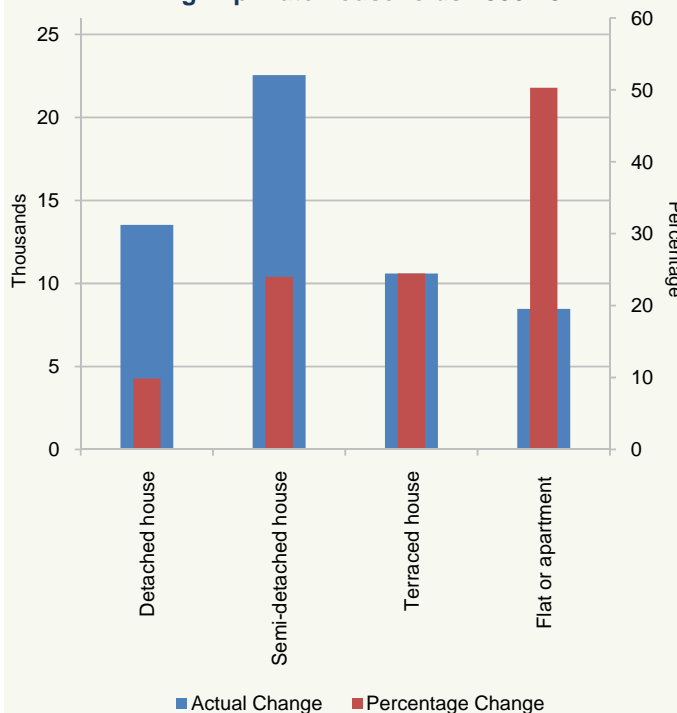
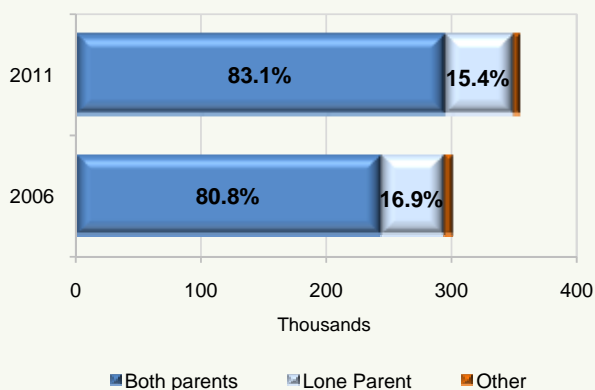


Figure 30 Composition of households where pre-school children lived, 2006-2011



## Who they live with

Figure 30 shows the categories of household in which pre-school children lived, showing that 83.1 per cent of this age group lived in family units with both parents, with 15.4 per cent in lone parent families.

While there was an increase of pre-school children living with a lone parent of 7.5 per cent since 2006, this type of family unit has decreased as a proportion of all household types from 16.9 to 15.4 per cent in 2011.

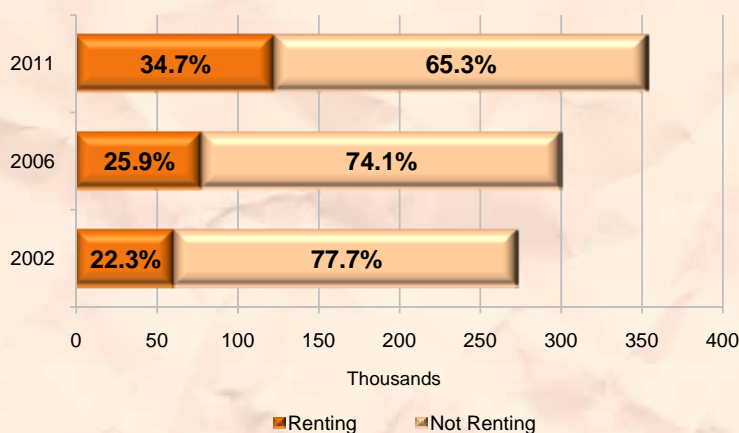
Tables page 41

## It's a fact!

**34.7%**

The percentage of all pre-school children who lived in rented accommodation in 2011

Accommodation by renting and not renting, 2002-2011





## Where they live

Census 2011 shows the population of the primary school age group (5-12) at 504,267, an increase of 12 per cent since 2006 compared to an 8.2 per cent increase in the population of the State as a whole.

## County by County

Map 4 shows the change in the primary school population by county since 2006. The greatest increase in primary school aged children was in Laois at 28.9 per cent, followed by Fingal (28.3%) and Longford (23.5%), while the slowest growth was recorded in Dublin city (0.5%).

The primary school aged population decreased in two of the cities with Limerick showing a 9.4 per cent fall and Cork city a 7.9 per cent fall in numbers.

## Accommodation

While the majority of primary aged children living in private households lived in detached houses (50.3%), as in the pre-school age group there is an increasing trend for primary school children to live in flats and apartments with a 27 per cent increase in those living in this accommodation type since 2006. Flats and apartments were rented in more than 84 per cent of cases.

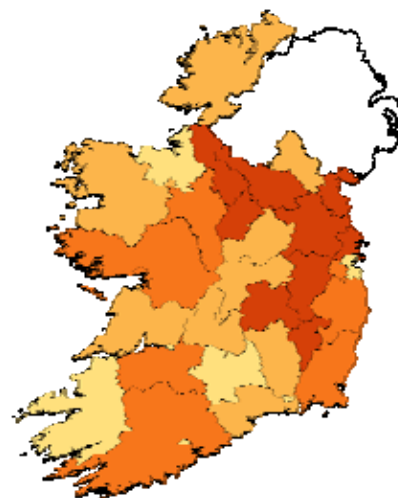
Twenty-nine per cent of accommodation was in rental properties, particularly in terraced houses where more than half the accommodation was rented.

## Household composition

There was an increase of 18.1 per cent in primary school children living in a lone parent household since 2006, representing 19.1 per cent of households up from 18 per cent in 2006.

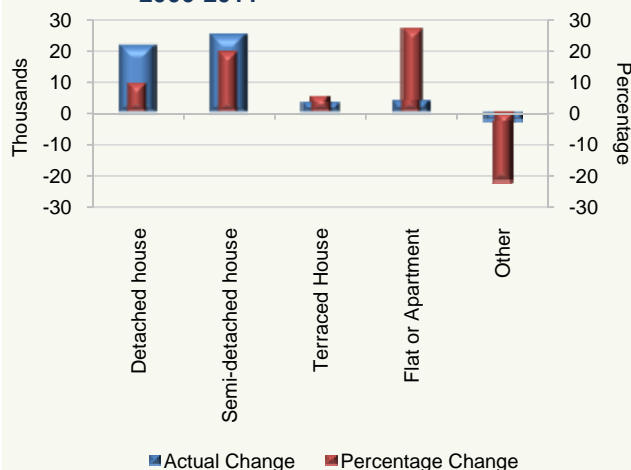
Tables page 42

**Map 4 Change in primary school population by county since 2006**



■ -0.4% - 7.3%    ■ 7.8% - 11.1%  
■ 11.3% - 14.5%    ■ 16.3% - 28.9%

**Figure 31 Change in accommodation type of 0-4 age group in private households 2006-2011**

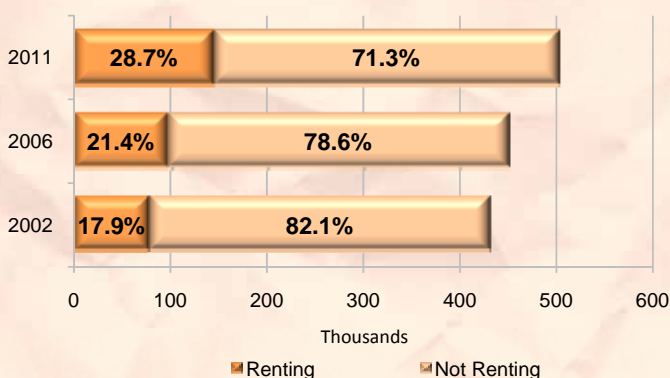


## It's a fact!

**49.6%** The increase since 2006 of primary school aged children living in rented accommodation

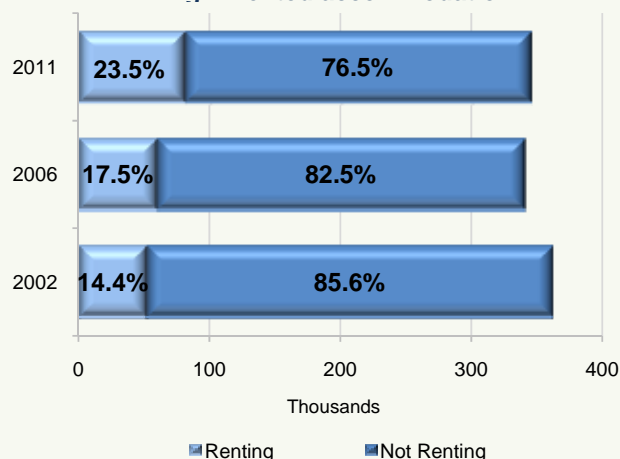
**18.1%** The increase since 2006 of primary school aged children living with one parent

**Accommodation by renting and not renting, 2002-2011**



# Secondary (13-18)

**Figure 32 Age group 13-18 in private households living in rented accommodation**



## County by County

Map 5 shows the change in the secondary school population by county since 2006. The greatest increase in this age group was in counties Laois and Kildare at 10.3 per cent, followed by Meath (9.5%) and Cavan (8.8%).

The secondary school age group decreased in almost half of all administrative counties. This was most pronounced in city areas with the cities of Limerick (-16.3%), Cork (-11.7%), Waterford (-6.4%) and Galway (-5.4%) experiencing the greatest declines. Other declines in general were concentrated in the West and in South Dublin and Dun Laoghaire-Rathdown.

## Household composition

Just over one-fifth of young people in the secondary school age group lived in lone parent families, up from 18.1 per cent in 2006.

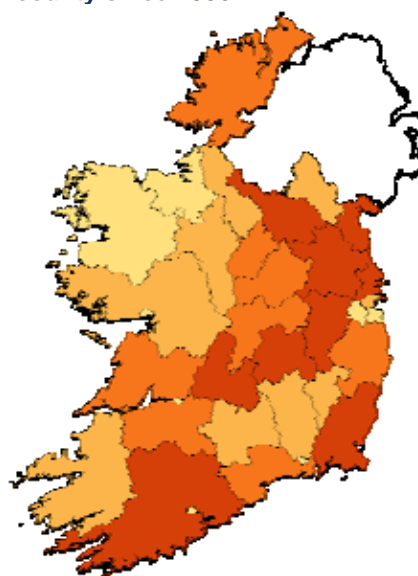
Tables page 42

## Where they live

Census 2011 shows the population of the secondary school age group (13-18) of 344,931, an increase of only 2,897 persons, or 0.8 per cent, since 2006, a consequence of low births in the mid-1990s feeding into today's numbers.

Figure 32 shows the proportion of teenagers in this age group who lived in rented accommodation in 2002, 2006 and 2011 and shows an increasing trend towards renting. Twenty-three and a half per cent of teenagers in this age group were living in rented accommodation in 2011, up from 17.5 per cent in 2006.

**Map 5 Change in secondary school population by county since 2006**

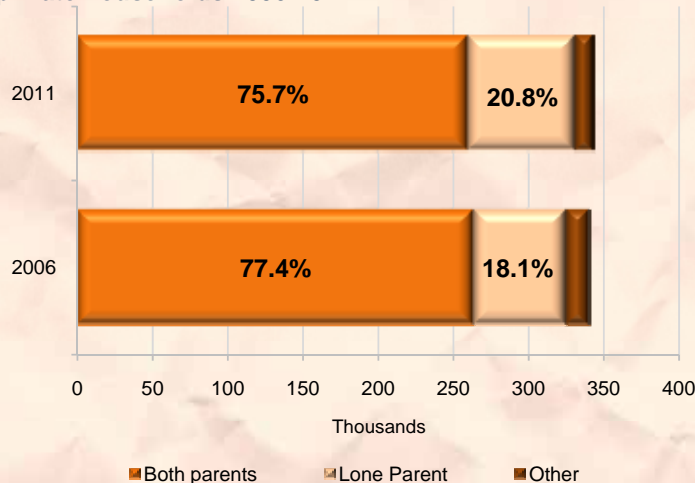


## It's a fact!

**23.5%** The percentage of the secondary school aged population living in rented accommodation

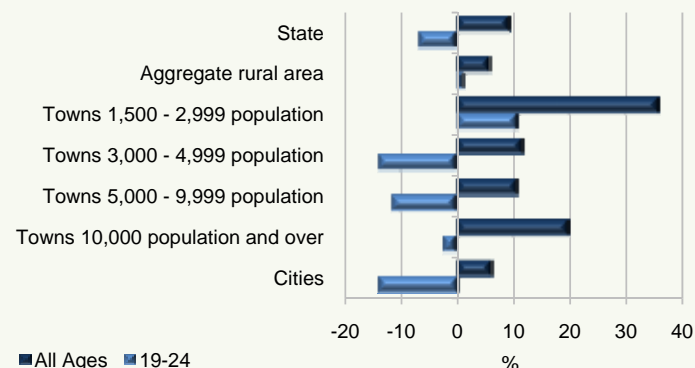
**16.3%** The decrease in the secondary school age population in Limerick city since 2006

**Composition of households for the 13-18 age group living in private households 2006-2011**



# Young adults (19-24)

**Figure 33 Change in age group 19-24 in private households by area since 2006**



## Where they live

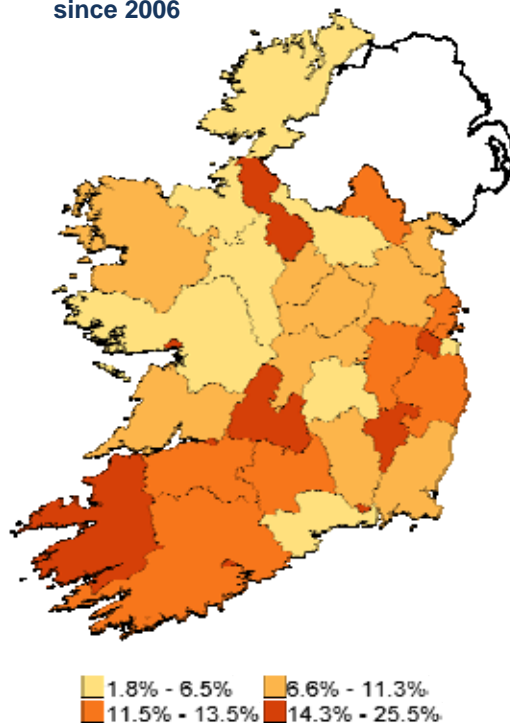
Census 2011 shows a population of the young adults aged 19-24 of 354,313, a decrease of 12 per cent since 2006; this is primarily a cohort effect of lower births in the late 1980s compared with earlier years, combined with the effects of migration among this mobile group.

Map 6 illustrates the change in the population of young adults by county since 2006, showing a falling population in every county with Galway city having the largest decrease at 25.5 per cent.

## Two thirds in urban areas

As shown in Figure 33 two-thirds of this age group who lived in private households lived in urban areas in 2011. This is higher than the figure of 61.6 per cent for the State as a whole as young adults move to urban areas to seek work and attend college.

**Map 6 Fall in young adult population by county since 2006**



## Still living at home

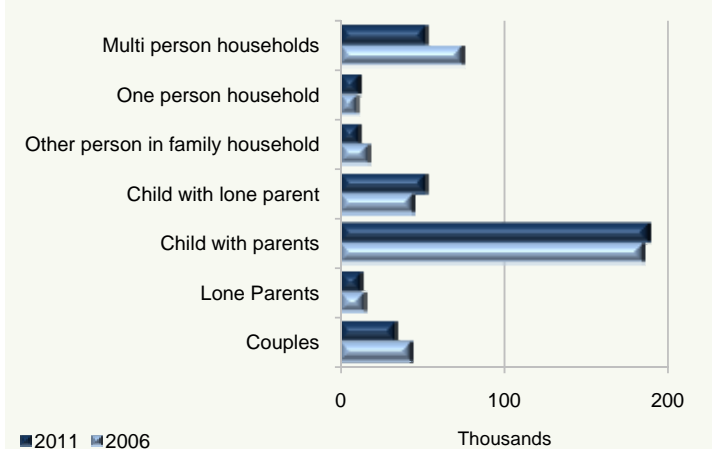
While the majority of young adults still live at home with one or both parents, the percentage in this category has increased from 59 per cent in 2006 to 66 per cent in 2011.

The corollary of this is fewer young adults in non-family households (flat-shares and such like) with the numbers falling by 21,463 from 22 to 18 per cent.

Just over 13,000 in this age group were enumerated as lone parents, a slight fall on 2006 while there were 9,770 fewer persons enumerated as husbands and wives or couples in this age group in 2011.

Tables page 43

**Figure 34 Position in household of young adults, 2006-2011**



## It's a fact!

**12%**

The decrease in the population of young adults since 2006

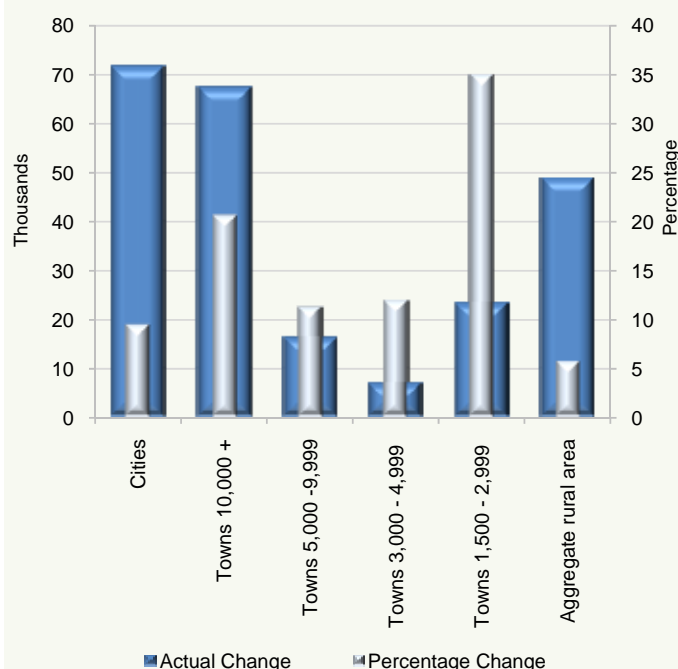
**37.5%**

The percentage of young adults living in rented accommodation



# Adults (25-64)

**Figure 35 Change in working age population by area since 2006**



## Where they live

The population of the 25-64 age group recorded in Census 2011 was 2,493,019, an increase of 9.6 per cent on the Census 2006 figure of 2,274,741.

Figure 35 illustrates the actual and percentage change in the population of adults living in private households by area type since 2006, showing that the population of this age group increased by the greatest numbers in cities with almost 72,000 more adults than in 2006. However, this was closely followed by large towns with an increase of over 67,000, showing a faster growth rate at 20.7 per cent than cities (9.5%).

There were proportionally more in this age group in the cities (34%) than for the population as a whole (32.9%).

There was an increasing trend for renting accommodation in this age group over the past decade with over 675,000 persons (27.6%) living in rented accommodation in 2011. This is an increase of 51.4 per cent over those renting in this age group in 2006 when just under 450,000 were renting.

## Marital status

Figure 36 shows the marital status by five year bands for this age group and neatly illustrates the progression from single to married, with separation and divorce featuring from age 40 on, and widowed becoming significant from age 60 on.

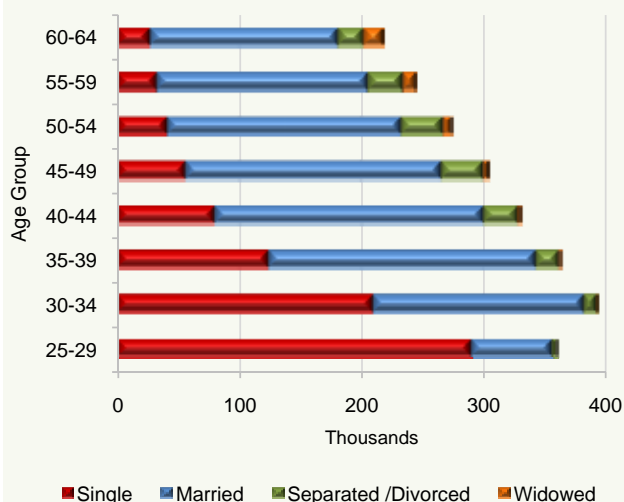
## Household composition

The majority of people in this age group overall were enumerated as husbands and wives or couples with 66 per cent in this category, though 8.6 per cent were enumerated as children with one or both parents.

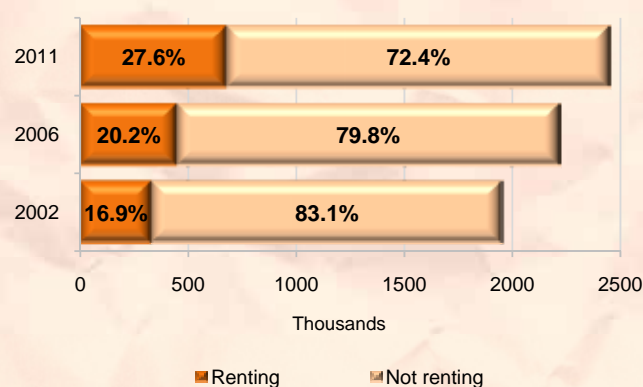
Almost one in ten in this age group lived alone.

Tables pages 43-45

**Figure 36 Marital status of age groups 25-64**



**Age 25-64 in rented accommodation**



## It's a fact!

**105.5%**

The increase in the 25-64 age group living in rented accommodation since 2002

**91.2%**

The increase in the 25-64 age group living in flats and apartments since 2002

## Where they live

The population of the 65 and over age group recorded in Census 2011 was 535,393, an increase of 14.4 per cent from 467,926 in 2006. Compared to population growth of 8.2 per cent in the State as a whole this is one of the age groups which experienced greatest growth over the period.

Map 7 shows the change in the population of elderly people by county since 2006, showing a growing population in each county, topped by Fingal with a 38 per cent increase followed by Kildare (30.3%) and South Dublin (29.1%). The lowest growth in the age group over the period was in the large cities with growth of 3.5 per cent in Dublin city and 6.5 per cent in Cork city.

## Position in household

Figure 37 shows the position in the household of the elderly living in private accommodation, showing that 56.5 per cent were couples and 27.7 per cent lived alone.

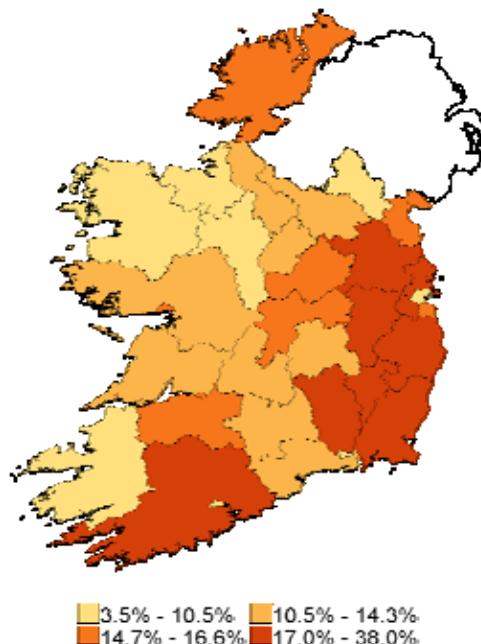
In a total of 10.8 per cent of cases an elderly person lived with other family members. In over two-thirds of these cases there was one elderly parent living with one of more of their children.

## Marital status

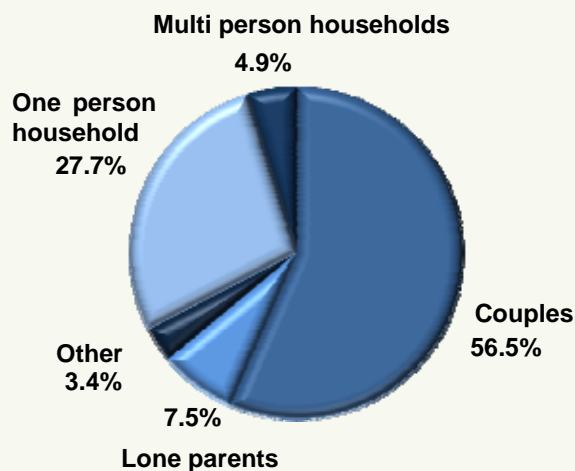
Fifty four per cent of the population in the 65 and over age group were married, with 28 per cent widowed, 14 per cent single and 4 per cent separated or divorced.

*Tables pages 45-46*

**Map 7 Change in elderly population by county since 2006**



**Figure 37 Position in household of elderly population living in private households**



## It's a fact!

**389**

The number of people in the State aged 100 and over

**100**

The increase in the number of centenarians since 2006

**Centenarians 2006-2011**



# Elderly (65+)

## Nursing homes and hospitals

Ninety-four per cent of the usually resident elderly population were in private households at the time of the census with the remainder, 31,054 persons, in communal establishments.

Figure 38 shows this group by sex, single year of age and type of establishment, and clearly illustrates the sex divide among this group with over twice as many females as males living in nursing homes and accounting for the majority of the increases in nursing homes residents in the group aged 80 and over.

The numbers increase with increasing age, particularly from age 70 onwards, rising to a peak of over 1,132 living in nursing homes at age 88, before decreasing in line with the decreasing population at older ages.

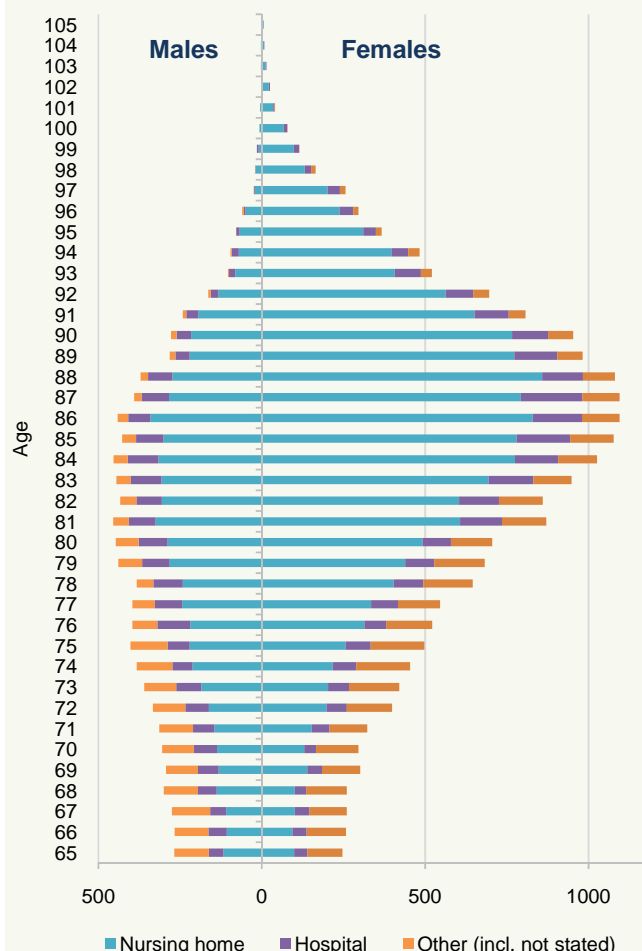
While two-thirds of this group were living in nursing homes the numbers of elderly usually resident in hospitals is noteworthy with a total of 4,873 persons aged 65 and over accounting for over 15 per cent of those living in communal establishments. The majority of the 5,379 persons enumerated in other establishments were in religious communities.

Figure 39 shows the percentage of all people aged 80 and over who were living in communal establishments. This starts out at just over 7 per cent of eighty year olds but gradually increases to a peak of 55 per cent of all persons aged 100.

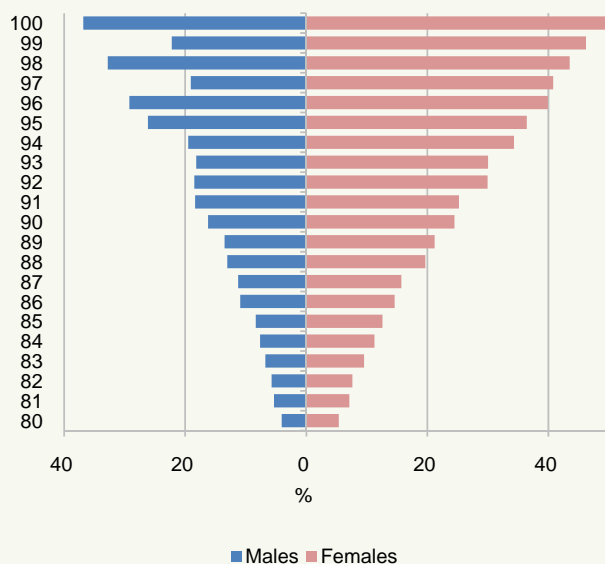
Females are more likely to live in nursing homes with 14.3 per cent of all females aged 80 and over living in nursing homes compared with 8.6 per cent of males.

Tables page 47-49

**Figure 38 Males and females aged 65 and over living in communal establishments**



**Figure 39 Males and females aged 80-100 usually resident in communal establishments as a percentage of total at each age**

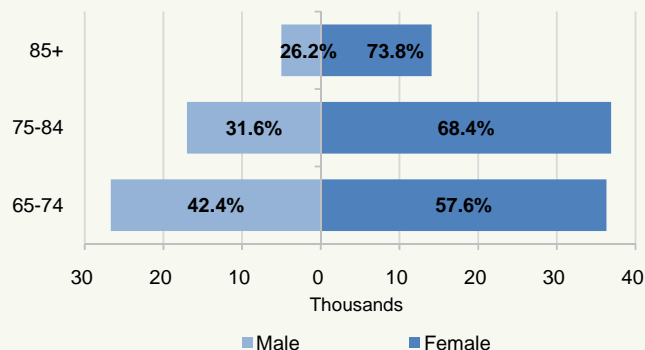


## Elderly living alone

Elderly people living alone were predominantly women as shown in Figure 40 with a total of over 87,000 females living alone compared with almost 49,000 males.

The proportion of females living alone increased with age, with females accounting for almost three quarters of all persons aged 85 and over living alone.

**Figure 40 Elderly living alone in private households by age group 2011**





# **STATISTICAL TABLES**



<b>Table No</b>	<b>Title</b>	<b>Page</b>
Table 1A	Persons, classified by age group at each census since 1926	33
Table 1B	Males, classified by age group at each census since 1926	34
Table 1C	Females, classified by age group at each census since 1926	35
Table 2	Persons, males and females, classified by single year of age, 2006 and 2011	36
Table 3	Average ages of the aggregate town and aggregate rural areas of each province, county and city, 2006 and 2011	38
Table 4	Age dependency ratios by province, county and city, 2006 and 2011	39
Table 5	Males per 1,000 females in the aggregate town and aggregate rural area, classified by single year of age	40
Table 6	Persons in private households, classified by age group, area type, towns with 1,500 population and over, type of accommodation with nature of occupancy and category of population, 2006 and 2011	41
Table 7A	Persons aged 65 years and over, usually resident and present, classified by single year of age, those enumerated in private households and in communal establishments	47
Table 7B	Males aged 65 years and over, usually resident and present, classified by single year of age, those enumerated in private households and in communal establishments	48
Table 7C	Females aged 65 years and over, usually resident and present, classified by single year of age, those enumerated in private households and in communal establishments	49
Table 8	Males and females, classified by single year of age and marital status	50
Table 9	Persons in each town with 1,500 population and over, classified by age group	52





**Table 1A Persons classified by age group at each census since 1926**

Age group	Census year														
	1926	1936	1946	1951	1961	1966	1971	1979	1981	1986	1991	1996	2002	2006	2011
Under 1 year	55,391	53,606	66,081	63,557	62,772	63,589	64,886	71,353	73,379	61,172	53,044	48,854	54,499	61,076	72,410
1 - 4 years	232,322	214,660	228,684	249,275	238,018	252,342	250,769	272,122	279,625	262,906	220,699	201,540	223,131	241,176	283,919
5 - 9 years	284,633	269,345	265,914	281,043	287,668	298,990	316,940	350,140	349,487	350,650	318,503	282,943	264,090	288,325	320,770
10 - 14 years	295,533	282,783	262,328	260,935	288,801	285,475	298,557	336,293	341,238	349,973	348,328	326,087	285,708	273,872	302,491
15 - 19 years	286,187	268,326	251,487	241,182	233,832	259,356	267,727	317,368	326,429	331,100	335,026	339,536	313,188	290,257	283,015
20 - 24 years	240,231	254,513	231,290	202,172	158,007	185,289	215,251	266,271	276,127	286,424	266,572	293,354	328,334	342,475	297,231
25 - 29 years	215,401	216,785	208,188	198,421	145,377	149,317	172,993	239,426	246,053	258,439	246,321	259,045	312,693	373,078	361,122
30 - 34 years	183,300	183,284	204,696	191,566	152,787	146,625	151,351	220,116	231,958	242,689	249,071	260,929	304,676	349,361	393,945
35 - 39 years	175,759	192,420	191,882	200,916	166,793	154,272	149,107	178,478	193,829	229,740	237,889	255,676	290,906	322,105	364,261
40 - 44 years	169,085	162,905	165,597	180,326	170,293	163,362	152,729	159,407	165,924	191,751	225,683	240,441	271,984	301,329	330,812
45 - 49 years	168,893	156,583	173,062	160,915	174,625	166,517	160,124	152,441	151,850	161,740	187,762	225,400	249,604	274,745	305,185
50 - 54 years	162,718	152,707	137,492	162,986	157,122	164,957	159,082	151,686	149,680	147,511	156,806	186,647	230,843	247,068	274,386
55 - 59 years	125,713	143,441	134,859	128,848	136,123	147,064	154,847	154,065	149,606	142,215	142,549	153,807	197,294	225,328	244,522
60 - 64 years	105,146	130,378	119,225	122,060	131,060	123,840	134,066	137,676	139,266	139,978	134,566	137,946	154,252	181,727	218,786
65 - 69 years	101,212	113,001	114,531	107,548	103,488	114,226	111,751	133,787	133,919	129,498	130,752	126,809	133,474	143,396	173,638
70 - 74 years	82,246	85,940	99,910	100,116	92,790	90,099	98,986	98,284	103,138	110,996	109,325	112,542	112,129	119,152	131,190
75 - 79 years	45,967	52,988	60,502	64,555	63,210	62,801	61,775	68,856	68,451	75,519	84,082	84,097	89,815	92,466	102,036
80 - 84 years	27,397	23,250	26,142	30,887	37,040	35,584	36,375	37,987	40,462	42,884	49,301	55,771	58,857	64,884	70,113
85 years and over	14,858	11,505	13,237	13,285	18,535	20,297	20,932	22,461	22,984	25,458	29,440	34,663	41,726	48,028	58,416
0 - 14 years	867,879	820,394	823,007	854,810	877,259	900,396	931,152	1,029,908	1,043,729	1,024,701	940,574	859,424	827,428	864,449	979,590
15 years and over	2,104,113	2,148,026	2,132,100	2,105,783	1,941,082	1,983,606	2,047,096	2,338,309	2,399,676	2,515,942	2,585,145	2,766,663	3,089,775	3,375,399	3,608,662
Total	2,971,992	2,968,420	2,955,107	2,960,593	2,818,341	2,884,002	2,978,248	3,368,217	3,443,405	3,540,643	3,525,719	3,626,087	3,917,203	4,239,848	4,588,252

**Table 1B Males classified by age group at each census since 1926**

Age group	Census year														
	1926	1936	1946	1951	1961	1966	1971	1979	1981	1986	1991	1996	2002	2006	2011
Under 1 year	28,084	27,152	33,798	32,630	32,137	32,514	33,276	36,171	37,717	31,315	27,390	25,231	27,805	31,273	36,850
1 - 4 years	118,089	109,213	116,751	127,601	121,293	128,798	128,570	139,466	143,313	135,103	113,174	103,509	114,235	123,283	145,226
5 - 9 years	144,764	136,348	135,116	143,490	146,991	152,445	161,828	179,087	179,108	179,847	163,346	145,335	135,890	147,984	164,037
10 - 14 years	150,814	143,720	133,319	132,726	148,319	145,649	152,112	172,306	175,271	179,381	178,928	167,377	146,114	140,504	155,076
15 - 19 years	146,047	138,112	127,793	125,742	120,347	133,327	136,773	162,279	166,677	169,887	171,408	173,950	160,413	148,241	144,262
20 - 24 years	124,518	134,680	118,060	105,380	80,420	94,726	109,961	135,808	140,446	144,112	136,479	149,143	165,292	172,766	146,636
25 - 29 years	106,646	113,325	104,139	99,595	72,289	75,008	87,736	121,589	124,378	129,086	120,660	129,363	156,100	189,252	173,714
30 - 34 years	92,502	94,078	103,816	96,441	75,241	73,794	76,823	112,749	118,287	122,198	123,168	127,735	152,377	177,487	194,774
35 - 39 years	87,349	96,783	97,536	102,278	81,626	76,458	75,488	91,757	99,286	116,410	118,724	126,140	144,530	163,811	182,237
40 - 44 years	86,050	83,741	84,310	94,006	84,795	80,966	76,424	81,799	85,320	97,962	113,856	120,064	135,301	151,438	166,330
45 - 49 years	87,010	80,507	86,996	82,374	89,036	83,643	79,533	77,774	77,781	82,769	95,443	113,816	124,981	137,983	151,516
50 - 54 years	85,648	78,681	69,941	82,922	81,688	84,309	80,039	75,588	75,320	75,156	79,861	94,818	116,585	124,550	136,737
55 - 59 years	67,121	75,089	67,785	65,028	68,619	75,815	78,429	76,127	73,289	70,514	71,665	77,809	99,827	113,943	122,121
60 - 64 years	53,671	68,110	59,933	61,346	64,435	61,631	68,131	67,804	67,978	67,219	65,591	68,690	77,559	91,561	109,869
65 - 69 years	51,499	60,056	58,467	54,145	51,141	55,046	54,493	64,994	64,306	61,080	60,956	60,256	65,290	70,895	86,298
70 - 74 years	37,485	40,822	49,924	49,121	44,110	42,243	44,593	45,802	48,380	50,881	49,183	50,124	51,719	56,540	63,476
75 - 79 years	20,926	24,670	29,735	31,642	29,694	28,744	27,774	29,140	29,172	32,635	35,713	35,228	37,377	40,121	46,631
80 - 84 years	12,082	10,484	11,933	14,649	16,674	15,824	15,663	14,917	15,415	16,126	18,965	21,074	22,283	24,694	28,423
85 years and over	6,584	4,883	5,525	5,481	7,694	8,092	8,114	8,115	7,910	8,009	8,908	10,570	12,486	14,845	18,486
0 - 14 years	441,751	416,433	418,984	436,447	448,740	459,406	475,786	527,030	535,409	525,646	482,838	441,452	424,044	443,044	501,189
15 years and over	1,065,138	1,104,021	1,075,893	1,070,150	967,809	989,626	1,019,974	1,166,242	1,193,945	1,244,044	1,270,580	1,358,780	1,522,120	1,678,127	1,771,510
Total	1,506,889	1,520,454	1,494,877	1,506,597	1,416,549	1,449,032	1,495,760	1,693,272	1,729,354	1,769,690	1,753,418	1,800,232	1,946,164	2,121,171	2,272,699

**Table 1C Females classified by age group at each census since 1926**

Age group	Census year														
	1926	1936	1946	1951	1961	1966	1971	1979	1981	1986	1991	1996	2002	2006	2011
Under 1 year	27,307	26,454	32,283	30,927	30,635	31,075	31,610	35,182	35,662	29,857	25,654	23,623	26,694	29,803	35,560
1 - 4 years	114,233	105,447	111,933	121,674	116,725	123,544	122,199	132,656	136,312	127,803	107,525	98,031	108,896	117,893	138,693
5 - 9 years	139,869	132,997	130,798	137,553	140,677	146,545	155,112	171,053	170,379	170,803	155,157	137,608	128,200	140,341	156,733
10 - 14 years	144,719	139,063	129,009	128,209	140,482	139,826	146,445	163,987	165,967	170,592	169,400	158,710	139,594	133,368	147,415
15 - 19 years	140,140	130,214	123,694	115,440	113,485	126,029	130,954	155,089	159,752	161,213	163,618	165,586	152,775	142,016	138,757
20 - 24 years	115,713	119,833	113,230	96,792	77,587	90,563	105,290	130,463	135,681	142,312	130,093	144,211	163,042	169,709	150,595
25 - 29 years	108,755	103,460	104,049	98,826	73,088	74,309	85,257	117,837	121,675	129,353	125,661	129,682	156,593	183,826	187,408
30 - 34 years	90,798	89,206	100,880	95,125	77,546	72,831	74,528	107,367	113,671	120,491	125,903	133,194	152,299	171,874	199,171
35 - 39 years	88,410	95,637	94,346	98,638	85,167	77,814	73,619	86,721	94,543	113,330	119,165	129,536	146,376	158,294	182,024
40 - 44 years	83,035	79,164	81,287	86,320	85,498	82,396	76,305	77,608	80,604	93,789	111,827	120,377	136,683	149,891	164,482
45 - 49 years	81,883	76,076	86,066	78,541	85,589	82,874	80,591	74,667	74,069	78,971	92,319	111,584	124,623	136,762	153,669
50 - 54 years	77,070	74,026	67,551	80,064	75,434	80,648	79,043	76,098	74,360	72,355	76,945	91,829	114,258	122,518	137,649
55 - 59 years	58,592	68,352	67,074	63,820	67,504	71,249	76,418	77,938	76,317	71,701	70,884	75,998	97,467	111,385	122,401
60 - 64 years	51,475	62,268	59,292	60,714	66,625	62,209	65,935	69,872	71,288	72,759	68,975	69,256	76,693	90,166	108,917
65 - 69 years	49,713	52,945	56,064	53,403	52,347	59,180	57,258	68,793	69,613	68,418	69,796	66,553	68,184	72,501	87,340
70 - 74 years	44,761	45,118	49,986	50,995	48,680	47,856	54,393	52,482	54,758	60,115	60,142	62,418	60,410	62,612	67,714
75 - 79 years	25,041	28,318	30,767	32,913	33,516	34,057	34,001	39,716	39,279	42,884	48,369	48,869	52,438	52,345	55,405
80 - 84 years	15,315	12,766	14,209	16,238	20,366	19,760	20,712	23,070	25,047	26,758	30,336	34,697	36,574	40,190	41,690
85 years and over	8,274	6,622	7,712	7,804	10,841	12,205	12,818	14,346	15,074	17,449	20,532	24,083	29,240	33,183	39,930
0 - 14 years	426,128	403,961	404,023	418,363	428,519	440,990	455,366	502,878	508,320	499,055	457,736	417,972	403,384	421,405	478,401
15 years and over	1,038,975	1,044,005	1,056,207	1,035,633	973,273	993,980	1,027,122	1,172,067	1,205,731	1,271,898	1,314,565	1,407,883	1,567,655	1,697,272	1,837,152
Total	1,465,103	1,447,966	1,460,230	1,453,996	1,401,792	1,434,970	1,482,488	1,674,945	1,714,051	1,770,953	1,772,301	1,825,855	1,971,039	2,118,677	2,315,553

**Table 2 Persons, males and females, classified by single year of age, 2006 and 2011**

Age	2006			2011		
	Persons	Males	Females	Persons	Males	Females
Under 1 year	61,076	31,273	29,803	72,410	36,850	35,560
1 year	60,454	31,104	29,350	72,645	37,230	35,415
2 years	60,672	30,986	29,686	72,566	37,153	35,413
3 years	60,431	30,840	29,591	71,457	36,382	35,075
4 years	59,619	30,353	29,266	67,251	34,461	32,790
5 years	58,163	29,813	28,350	64,937	33,199	31,738
6 years	58,197	29,857	28,340	64,976	33,534	31,442
7 years	58,412	30,030	28,382	64,441	32,829	31,612
8 years	57,117	29,320	27,797	63,816	32,578	31,238
9 years	56,436	28,964	27,472	62,600	31,897	30,703
10 years	54,491	28,092	26,399	61,429	31,514	29,915
11 years	53,789	27,606	26,183	60,834	31,114	29,720
12 years	53,469	27,447	26,022	61,234	31,430	29,804
13 years	55,018	28,323	26,695	59,992	30,717	29,275
14 years	57,105	29,036	28,069	59,002	30,301	28,701
15 years	58,318	30,112	28,206	57,227	29,416	27,811
16 years	56,551	28,903	27,648	56,005	28,577	27,428
17 years	56,716	28,914	27,802	55,865	28,600	27,265
18 years	58,326	29,597	28,729	56,840	29,107	27,733
19 years	60,346	30,715	29,631	57,082	28,562	28,520
20 years	64,091	32,136	31,955	59,932	30,178	29,754
21 years	65,466	33,098	32,368	57,930	28,773	29,157
22 years	67,904	34,310	33,594	57,647	28,506	29,141
23 years	71,297	36,101	35,196	59,459	28,977	30,482
24 years	73,717	37,121	36,596	62,263	30,202	32,061
25 years	77,484	39,375	38,109	65,242	31,407	33,835
26 years	77,922	39,703	38,219	68,086	32,844	35,242
27 years	74,725	37,608	37,117	71,791	34,313	37,478
28 years	72,039	36,514	35,525	76,766	36,781	39,985
29 years	70,908	36,052	34,856	79,237	38,369	40,868
30 years	70,307	35,798	34,509	82,614	40,573	42,041
31 years	70,306	35,783	34,523	81,733	40,544	41,189
32 years	69,755	35,343	34,412	78,832	38,656	40,176
33 years	70,329	35,735	34,594	75,997	37,590	38,407
34 years	68,664	34,828	33,836	74,769	37,411	37,358
35 years	68,351	34,728	33,623	74,286	37,144	37,142
36 years	66,696	33,954	32,742	73,970	37,020	36,950
37 years	62,834	32,071	30,763	72,536	36,251	36,285
38 years	62,203	31,529	30,674	72,619	36,328	36,291
39 years	62,021	31,529	30,492	70,850	35,494	35,356
40 years	61,799	31,191	30,608	70,347	35,375	34,972
41 years	61,811	30,912	30,899	68,490	34,432	34,058
42 years	60,593	30,496	30,097	64,732	32,768	31,964
43 years	59,547	29,887	29,660	64,164	32,171	31,993
44 years	57,579	28,952	28,627	63,079	31,584	31,495
45 years	58,336	29,206	29,130	62,698	31,285	31,413
46 years	56,597	28,301	28,296	63,180	31,265	31,915
47 years	53,798	27,124	26,674	61,369	30,383	30,986
48 years	53,525	26,874	26,651	59,782	29,703	30,079
49 years	52,489	26,478	26,011	58,156	28,880	29,276

Table 2 (contd.) Persons, males and females, classified by single year of age, 2006 and 2011

Age	2006			2011		
	Persons	Males	Females	Persons	Males	Females
50 years	51,020	25,648	25,372	58,441	29,167	29,274
51 years	50,913	25,616	25,297	56,126	27,888	28,238
52 years	48,877	24,639	24,238	54,054	27,014	27,040
53 years	49,251	24,889	24,362	53,446	26,489	26,957
54 years	47,007	23,758	23,249	52,319	26,179	26,140
55 years	46,415	23,544	22,871	50,731	25,296	25,435
56 years	46,178	23,060	23,118	50,475	25,094	25,381
57 years	45,290	22,842	22,448	48,474	24,252	24,222
58 years	44,399	22,566	21,833	48,640	24,287	24,353
59 years	43,046	21,931	21,115	46,202	23,192	23,010
60 years	41,390	20,946	20,444	45,365	22,906	22,459
61 years	38,092	19,196	18,896	44,765	22,199	22,566
62 years	36,353	18,326	18,027	44,100	22,127	21,973
63 years	34,609	17,230	17,379	43,124	21,679	21,445
64 years	31,283	15,863	15,420	41,432	20,958	20,474
65 years	30,386	15,271	15,115	39,834	19,967	19,867
66 years	30,195	14,978	15,217	36,582	18,209	18,373
67 years	28,804	14,204	14,600	34,761	17,325	17,436
68 years	27,198	13,363	13,835	32,783	16,125	16,658
69 years	26,813	13,079	13,734	29,678	14,672	15,006
70 years	25,908	12,485	13,423	28,165	13,842	14,323
71 years	24,850	11,838	13,012	27,822	13,561	14,261
72 years	23,979	11,400	12,579	26,505	12,822	13,683
73 years	22,783	10,766	12,017	24,637	11,761	12,876
74 years	21,632	10,051	11,581	24,061	11,490	12,571
75 years	20,895	9,542	11,353	23,096	10,771	12,325
76 years	19,802	8,762	11,040	21,734	10,017	11,717
77 years	18,350	7,996	10,354	20,643	9,444	11,199
78 years	16,906	7,085	9,821	18,862	8,532	10,330
79 years	16,513	6,736	9,777	17,701	7,867	9,834
80 years	15,500	6,200	9,300	16,954	7,370	9,584
81 years	14,316	5,585	8,731	15,331	6,374	8,957
82 years	12,789	4,830	7,959	13,893	5,589	8,304
83 years	11,985	4,399	7,586	12,378	4,765	7,613
84 years	10,294	3,680	6,614	11,557	4,325	7,232
85 years	9,407	3,306	6,101	10,247	3,759	6,488
86 years	8,157	2,757	5,400	9,249	3,264	5,985
87 years	6,451	2,097	4,354	7,975	2,645	5,330
88 years	4,930	1,583	3,347	6,854	2,200	4,654
89 years	4,357	1,278	3,079	5,562	1,723	3,839
90 years	3,613	1,087	2,526	4,718	1,405	3,313
91 years	2,951	790	2,161	3,859	1,124	2,735
92 years	2,374	593	1,781	2,763	763	2,000
93 years	1,814	443	1,371	1,927	477	1,450
94 years	1,293	318	975	1,610	386	1,224
95 years	931	221	710	1,166	272	894
96 years	619	137	482	810	178	632
97 years	362	80	282	638	119	519
98 years	278	68	210	381	64	317
99 years	202	41	161	268	49	219
100 years and over	289	46	243	389	58	331
Total	4,239,848	2,121,171	2,118,677	4,588,252	2,272,699	2,315,553

**Table 3 Average ages of the aggregate town and aggregate rural areas of each province, county and city, 2006 and 2011**

Province, county and city	2006			2011		
	Total	Aggregate town area	Aggregate rural area	Total	Aggregate town area	Aggregate rural area
Leinster	34.9	34.7	35.8	35.5	35.1	36.6
Carlow	35.0	34.3	35.8	35.7	35.0	36.5
Dublin	35.2	35.2	36.5	35.8	35.8	37.9
<i>of which</i>						
Dublin City	36.8	36.8	-	37.3	37.3	-
Dún Laoghaire-Rathdown	37.5	37.5	34.9	38.2	38.2	41.8
Fingal	32.2	32.0	35.4	32.9	32.5	36.7
South Dublin	33.1	33.0	40.0	34.1	33.9	41.2
Kildare	32.8	32.1	34.1	33.5	32.6	35.3
Kilkenny	36.0	35.7	36.1	36.6	35.7	37.1
Laois	34.8	33.1	36.0	34.3	32.2	36.3
Longford	36.5	34.8	37.1	36.4	34.9	37.1
Louth	34.8	34.6	35.1	35.2	35.1	35.4
Meath	33.4	31.0	36.0	33.8	31.4	37.0
Offaly	35.1	34.5	35.5	35.7	34.8	36.4
Westmeath	34.9	34.0	35.8	35.6	34.5	36.8
Wexford	35.8	35.5	36.0	36.5	36.2	36.7
Wicklow	35.2	34.5	36.2	35.7	35.1	36.9
Munster	36.3	35.5	37.1	36.9	36.2	37.7
Clare	36.3	34.8	37.3	36.9	35.5	37.8
Cork	35.9	35.5	36.6	36.4	36.0	37.1
<i>of which</i>						
Cork City	37.6	37.6	-	38.7	38.7	-
Cork County	35.3	34.0	36.6	35.8	34.5	37.1
Kerry	38.1	37.6	38.3	38.5	37.8	39.0
Limerick	35.6	34.2	37.0	36.5	35.4	37.7
<i>of which</i>						
Limerick City	35.6	35.6	37.7	37.1	37.1	-
Limerick County	35.6	32.0	37.0	36.2	33.3	37.7
North Tipperary	36.7	36.4	36.9	37.3	36.4	37.9
South Tipperary	36.8	36.6	37.0	37.4	37.2	37.5
Waterford	36.2	35.9	36.8	36.9	36.6	37.4
<i>of which</i>						
Waterford City	35.8	35.8	-	36.7	36.7	-
Waterford County	36.6	36.1	36.8	37.1	36.4	37.4
Connacht	36.8	35.2	37.6	37.4	35.6	38.4
Galway	35.4	34.0	36.5	36.1	34.8	37.2
<i>of which</i>						
Galway City	33.4	33.4	-	34.6	34.6	-
Galway County	36.3	35.6	36.5	36.8	35.3	37.2
Leitrim	38.1	36.7	38.3	38.4	35.2	38.8
Mayo	38.0	36.4	38.7	38.6	36.3	39.6
Roscommon	38.3	37.4	38.6	38.4	36.7	39.0
Sligo	37.5	37.0	37.8	37.9	37.2	38.3
Ulster (part of)	36.1	35.2	36.4	36.5	35.5	36.9
Cavan	36.2	35.1	36.5	36.0	34.0	36.9
Donegal	36.1	34.5	36.6	36.7	35.7	37.1
Monaghan	36.1	37.1	35.7	36.4	36.8	36.2
State	35.6	34.9	36.7	36.1	35.4	37.3

**Table 4 Age dependency ratios by province, county and city, 2006 and 2011**

Province, county and city	2006			2011		
	Total	Young (0 - 14 years)	Old (65 years and over)	Total	Young (0 - 14 years)	Old (65 years and over)
Leinster	43.5	29.1	14.4	47.3	31.5	15.8
Carlow	46.0	30.7	15.4	50.6	33.5	17.1
Dublin	40.2	25.7	14.5	43.3	27.6	15.7
<i>of which</i>						
Dublin City	38.3	20.7	17.6	38.4	21.0	17.4
Dún Laoghaire-Rathdown	46.1	26.5	19.6	48.5	27.0	21.5
Fingal	39.0	30.7	8.3	46.0	35.4	10.6
South Dublin	40.7	30.5	10.2	46.6	33.9	12.7
Kildare	42.7	32.9	9.8	48.0	36.3	11.7
Kilkenny	49.1	32.1	17.0	52.6	33.9	18.7
Laois	49.7	33.8	15.8	53.3	37.9	15.4
Longford	52.2	33.0	19.1	55.6	36.1	19.5
Louth	48.2	32.7	15.5	52.2	35.5	16.7
Meath	45.8	34.2	11.7	51.7	38.3	13.5
Offaly	50.3	33.8	16.5	53.9	36.0	17.9
Westmeath	49.1	33.2	16.0	51.4	34.1	17.2
Wexford	51.1	33.5	17.6	54.8	35.2	19.6
Wicklow	45.8	31.4	14.5	51.0	34.5	16.6
Munster	47.5	29.9	17.5	50.9	31.8	19.0
Clare	49.8	32.4	17.4	53.0	34.1	19.0
Cork	46.1	29.4	16.6	49.5	31.5	18.0
<i>of which</i>						
Cork City	41.5	21.5	20.0	42.3	20.9	21.4
Cork County	47.6	32.2	15.5	51.8	34.9	16.9
Kerry	50.0	29.2	20.8	52.9	30.8	22.1
Limerick	44.0	28.1	15.9	48.2	30.2	18.0
<i>of which</i>						
Limerick City	42.4	25.7	16.8	45.1	26.0	19.1
Limerick County	44.7	29.3	15.4	49.5	32.0	17.5
North Tipperary	51.8	32.4	19.3	54.9	34.1	20.8
South Tipperary	51.2	31.8	19.4	53.1	32.7	20.4
Waterford	49.2	31.0	18.2	52.9	33.0	19.9
<i>of which</i>						
Waterford City	45.5	27.9	17.6	48.8	29.5	19.3
Waterford County	52.0	33.3	18.7	55.9	35.6	20.3
Connacht	49.0	29.9	19.1	51.7	31.6	20.1
Galway	44.7	28.8	15.9	47.9	30.8	17.1
<i>of which</i>						
Galway City	31.4	20.2	11.1	34.9	22.3	12.6
Galway County	51.7	33.2	18.4	54.4	35.0	19.4
Leitrim	53.6	31.3	22.3	57.3	34.0	23.3
Mayo	53.7	31.5	22.2	55.9	32.6	23.3
Roscommon	54.3	31.5	22.9	55.9	33.1	22.9
Sligo	49.4	29.2	20.1	51.2	30.3	20.9
Ulster (part of)	53.1	34.1	19.0	55.7	35.7	20.0
Cavan	53.3	34.1	19.2	55.4	36.6	18.8
Donegal	54.3	35.0	19.3	56.9	36.0	20.9
Monaghan	49.8	31.8	18.1	53.0	34.1	18.9
State	45.8	29.7	16.1	49.3	31.9	17.4

**Table 5 Males per 1,000 females in the aggregate town and aggregate rural area, classified by single year of age**

Age last birthday	Total	Aggregate town area	Aggregate rural area	Age last birthday	Total	Aggregate town area	Aggregate rural area
Under 1 year	1,036	1,032	1,045	55 years	995	932	1,084
1 year	1,051	1,058	1,039	56 years	989	935	1,062
2 years	1,049	1,042	1,060	57 years	1,001	943	1,081
3 years	1,037	1,028	1,051	58 years	997	948	1,064
4 years	1,051	1,048	1,055	59 years	1,008	952	1,085
5 years	1,046	1,037	1,059	60 years	1,020	966	1,093
6 years	1,067	1,055	1,084	61 years	984	915	1,079
7 years	1,038	1,043	1,032	62 years	1,007	925	1,121
8 years	1,043	1,027	1,067	63 years	1,011	950	1,093
9 years	1,039	1,027	1,056	64 years	1,024	963	1,108
10 years	1,053	1,044	1,067	65 years	1,005	949	1,082
11 years	1,047	1,059	1,031	66 years	991	918	1,091
12 years	1,055	1,055	1,054	67 years	994	908	1,117
13 years	1,049	1,026	1,081	68 years	968	873	1,108
14 years	1,056	1,050	1,064	69 years	978	905	1,085
15 years	1,058	1,057	1,059	70 years	966	879	1,100
16 years	1,042	1,043	1,041	71 years	951	872	1,075
17 years	1,049	1,037	1,065	72 years	937	863	1,054
18 years	1,050	1,014	1,109	73 years	913	842	1,025
19 years	1,001	966	1,080	74 years	914	822	1,061
20 years	1,014	966	1,127	75 years	874	785	1,015
21 years	987	947	1,085	76 years	855	786	961
22 years	978	938	1,078	77 years	843	761	972
23 years	951	901	1,081	78 years	826	747	949
24 years	942	898	1,065	79 years	800	712	938
25 years	928	891	1,038	80 years	769	690	892
26 years	932	905	1,011	81 years	712	642	821
27 years	916	895	978	82 years	673	605	776
28 years	920	895	996	83 years	626	563	722
29 years	939	922	987	84 years	598	542	677
30 years	965	957	987	85 years	579	534	646
31 years	984	984	984	86 years	545	487	629
32 years	962	963	960	87 years	496	461	544
33 years	979	980	975	88 years	473	430	532
34 years	1,001	993	1,021	89 years	449	413	499
35 years	1,000	999	1,003	90 years	424	386	477
36 years	1,002	1,007	993	91 years	411	385	447
37 years	999	999	999	92 years	382	361	408
38 years	1,001	1,004	996	93 years	329	278	397
39 years	1,004	1,009	995	94 years	315	296	339
40 years	1,012	1,006	1,020	95 years	304	287	326
41 years	1,011	1,003	1,024	96 years	282	258	315
42 years	1,025	1,008	1,052	97 years	229	196	283
43 years	1,006	996	1,019	98 years	202	141	303
44 years	1,003	980	1,035	99 years	224	220	230
45 years	996	981	1,017	100 years and over	175	178	172
46 years	980	943	1,034				
47 years	981	932	1,053				
48 years	987	951	1,042				
49 years	986	949	1,042				
50 years	996	969	1,037				
51 years	988	951	1,040				
52 years	999	948	1,073				
53 years	983	941	1,041				
54 years	1,001	954	1,068	Total	981	953	1,030



**Table 6 Persons in private households, classified by age group, area type, towns with 1,500 population and over, type of accommodation with nature of occupancy and category of population, 2006 and 2011**

House type	Total			Pre-school 0 - 4 years		
	2006	2011	Change	2006	2011	Change
Total	4,123,318	4,510,409	387,091	300,246	353,425	53,179
Area type and towns						
Aggregate town area	2,486,641	2,777,156	290,515	180,718	222,318	41,600
Dublin City and suburbs	1,010,694	1,077,981	67,287	66,595	77,136	10,541
Cork City and suburbs	184,737	194,479	9,742	11,440	12,550	1,110
Limerick City and suburbs	86,920	87,984	1,064	5,844	6,475	631
Galway City and suburbs	67,999	72,182	4,183	4,247	4,772	525
Waterford City and suburbs	46,968	50,306	3,338	3,477	3,863	386
Towns 10,000 population and over	596,739	716,380	119,641	48,860	63,028	14,168
Towns 5,000 - 9,999 population	264,691	293,383	28,692	22,176	27,485	5,309
Towns 3,000 - 4,999 population	105,153	117,577	12,424	8,550	11,300	2,750
Towns 1,500 - 2,999 population	122,740	166,884	44,144	9,529	15,709	6,180
Aggregate rural area	1,636,677	1,733,253	96,576	119,528	131,107	11,579
Type of accommodation						
Renting	855,137	1,211,579	356,442	77,909	122,782	44,873
Detached house	151,197	236,316	85,119	14,367	25,969	11,602
Semi-detached house	260,685	393,464	132,779	29,057	47,173	18,116
Terraced house	216,082	276,110	60,028	18,894	25,706	6,812
Flat or apartment in a purpose-built block	152,376	226,831	74,455	10,654	17,811	7,157
Flat or apartment in part of converted house or commercial building	42,357	41,626	-731	2,180	2,258	78
Other	16,696	11,589	-5,107	983	760	-223
Not stated	15,744	25,643	9,899	1,774	3,105	1,331
Not renting (incl. not stated)	3,268,181	3,298,830	30,649	222,337	230,643	8,306
Detached house	1,754,797	1,844,247	89,450	122,498	124,427	1,929
Semi-detached house	887,454	895,645	8,191	64,956	69,391	4,435
Terraced house	459,464	433,846	-25,618	24,446	28,239	3,793
Flat or apartment in a purpose-built block	70,012	68,322	-1,690	3,308	4,992	1,684
Flat or apartment in part of converted house or commercial building	13,326	5,571	-7,755	704	256	-448
Other	14,349	6,256	-8,093	1,551	661	-890
Not stated	68,779	44,943	-23,836	4,874	2,677	-2,197
Category of population						
A. Persons in private households (A = B + I)	4,123,318	4,510,409	387,091	300,246	353,425	53,179
B. Persons in family households (B = C + H)	3,503,377	3,859,164	355,787	297,899	352,071	54,172
C. Members of family units (C = D + E + F + G)	3,403,551	3,769,080	365,529	293,305	348,281	54,976
D. Persons enumerated as husbands and wives (or couples)	1,727,880	1,927,790	199,910	-	-	-
E. Persons enumerated as lone parents	189,240	215,315	26,075	-	-	-
F. Children (of any age) enumerated with both parents	1,174,628	1,273,979	99,351	242,653	293,835	51,182
G. Children (of any age) enumerated with a lone parent	311,803	351,996	40,193	50,652	54,446	3,794
H. Other persons in family households	99,826	90,084	-9,742	4,594	3,790	-804
I. Persons in non-family households (I = J + K)	619,941	651,245	31,304	2,347	1,354	-993
J. One person households	329,450	392,000	62,550	91	75	-16
K. Members of multi-person households	290,491	259,245	-31,246	2,256	1,279	-977

**Table 6 (contd.) Persons in private households, classified by age group, area type, towns with 1,500 population and over, type of accommodation with nature of occupancy and category of population, 2006 and 2011**

House type	Primary 5 - 12 years			Teenagers 13 - 18 years		
	2006	2011	Change	2006	2011	Change
Total	450,720	502,660	51,940	340,367	344,914	4,547
Area type and towns						
Aggregate town area	254,503	293,348	38,845	190,014	197,243	7,229
Dublin City and suburbs	96,537	103,522	6,985	74,618	72,684	-1,934
Cork City and suburbs	18,286	18,370	84	14,882	14,365	-517
Limerick City and suburbs	8,464	8,509	45	6,934	6,378	-556
Galway City and suburbs	5,599	6,276	677	4,754	4,676	-78
Waterford City and suburbs	4,864	5,404	540	3,727	3,612	-115
Towns 10,000 population and over	65,589	83,457	17,868	47,317	53,259	5,942
Towns 5,000 - 9,999 population	29,979	35,022	5,043	20,450	21,798	1,348
Towns 3,000 - 4,999 population	11,902	13,394	1,492	7,830	8,343	513
Towns 1,500 - 2,999 population	13,283	19,394	6,111	9,502	12,128	2,626
Aggregate rural area	196,217	209,312	13,095	150,353	147,671	-2,682
Type of accommodation						
Renting	96,284	144,026	47,742	59,724	81,038	21,314
Detached house	18,511	30,764	12,253	11,348	17,359	6,011
Semi-detached house	35,347	58,732	23,385	19,584	30,561	10,977
Terraced house	28,838	35,150	6,312	19,840	22,225	2,385
Flat or apartment in a purpose-built block	8,876	13,585	4,709	6,005	7,555	1,550
Flat or apartment in part of converted house or commercial building	1,496	1,581	85	966	946	-20
Other	948	653	-295	562	461	-101
Not stated	2,268	3,561	1,293	1,419	1,931	512
Not renting (incl. not stated)	354,436	358,634	4,198	280,643	263,876	-16,767
Detached house	212,465	222,181	9,716	167,581	166,137	-1,444
Semi-detached house	93,839	95,820	1,981	72,024	67,789	-4,235
Terraced house	36,023	33,083	-2,940	32,420	25,299	-7,121
Flat or apartment in a purpose-built block	2,945	2,532	-413	2,007	1,115	-892
Flat or apartment in part of converted house or commercial building	843	306	-537	613	243	-370
Other	1,528	639	-889	891	365	-526
Not stated	6,793	4,073	-2,720	5,107	2,928	-2,179
Category of population						
A. Persons in private households (A = B + I)	450,720	502,660	51,940	340,367	344,914	4,547
B. Persons in family households (B = C + H)	447,119	500,307	53,188	333,508	339,126	5,618
C. Members of family units (C = D + E + F + G)	440,131	493,603	53,472	326,969	332,796	5,827
D. Persons enumerated as husbands and wives (or couples)	-	-	-	946	638	-308
E. Persons enumerated as lone parents	-	-	-	898	677	-221
F. Children (of any age) enumerated with both parents	359,000	397,785	38,785	263,505	260,010	-3,495
G. Children (of any age) enumerated with a lone parent	81,131	95,818	14,687	61,620	71,471	9,851
H. Other persons in family households	6,988	6,704	-284	6,539	6,330	-209
I. Persons in non-family households (I = J + K)	3,601	2,353	-1,248	6,859	5,788	-1,071
J. One person households	115	59	-56	852	776	-76
K. Members of multi-person households	3,486	2,294	-1,192	6,007	5,012	-995

**Table 6 (contd.) Persons in private households, classified by age group, area type, towns with 1,500 population and over, type of accommodation with nature of occupancy and category of population, 2006 and 2011**

House type	Young adults 19 - 24 years			25 - 34 years		
	2006	2011	Change	2006	2011	Change
Total	392,867	366,170	-26,697	701,487	747,004	45,517
Area type and towns						
Aggregate town area	272,105	244,058	-28,047	490,186	539,586	49,400
Dublin City and suburbs	114,203	98,750	-15,453	205,109	220,741	15,632
Cork City and suburbs	22,822	20,579	-2,243	32,952	36,530	3,578
Limerick City and suburbs	12,366	9,768	-2,598	16,757	16,902	145
Galway City and suburbs	12,176	9,629	-2,547	16,045	17,334	1,289
Waterford City and suburbs	5,211	4,515	-696	8,334	9,239	905
Towns 10,000 population and over	60,619	59,178	-1,441	116,278	132,615	16,337
Towns 5,000 - 9,999 population	24,339	21,507	-2,832	50,516	53,519	3,003
Towns 3,000 - 4,999 population	9,749	8,386	-1,363	21,367	22,761	1,394
Towns 1,500 - 2,999 population	10,620	11,746	1,126	22,828	29,945	7,117
Aggregate rural area	120,762	122,112	1,350	211,301	207,418	-3,883
Type of accommodation						
Renting	135,056	137,319	2,263	229,040	344,609	115,569
Detached house	17,130	21,272	4,142	33,426	55,422	21,996
Semi-detached house	39,426	40,833	1,407	67,680	102,286	34,606
Terraced house	31,470	31,679	209	48,873	67,901	19,028
Flat or apartment in a purpose-built block	33,928	33,420	-508	54,604	92,878	38,274
Flat or apartment in part of converted house or commercial building	8,682	5,954	-2,728	16,432	16,392	-40
Other	2,484	1,329	-1,155	4,841	2,953	-1,888
Not stated	1,936	2,832	896	3,184	6,777	3,593
Not renting (incl. not stated)	257,811	228,851	-28,960	472,447	402,395	-70,052
Detached house	126,669	131,891	5,222	194,943	174,655	-20,288
Semi-detached house	73,118	61,788	-11,330	150,929	124,337	-26,592
Terraced house	38,728	27,297	-11,431	79,571	65,443	-14,128
Flat or apartment in a purpose-built block	7,652	2,438	-5,214	27,663	25,913	-1,750
Flat or apartment in part of converted house or commercial building	1,592	307	-1,285	2,991	955	-2,036
Other	1,723	548	-1,175	3,173	1,136	-2,037
Not stated	8,329	4,582	-3,747	13,177	9,956	-3,221
Category of population						
A. Persons in private households (A = B + I)	392,867	366,170	-26,697	701,487	747,004	45,517
B. Persons in family households (B = C + H)	306,949	301,715	-5,234	544,395	587,750	43,355
C. Members of family units (C = D + E + F + G)	289,162	289,343	181	520,482	565,716	45,234
D. Persons enumerated as husbands and wives (or couples)	44,163	34,393	-9,770	344,071	376,573	32,502
E. Persons enumerated as lone parents	14,897	13,107	-1,790	38,459	44,318	5,859
F. Children (of any age) enumerated with both parents	185,235	189,168	3,933	102,431	106,678	4,247
G. Children (of any age) enumerated with a lone parent	44,867	52,675	7,808	35,521	38,147	2,626
H. Other persons in family households	17,787	12,372	-5,415	23,913	22,034	-1,879
I. Persons in non-family households (I = J + K)	85,918	64,455	-21,463	157,092	159,254	2,162
J. One person households	10,677	12,104	1,427	47,847	55,256	7,409
K. Members of multi-person households	75,241	52,351	-22,890	109,245	103,998	-5,247

**Table 6 (contd.) Persons in private households, classified by age group, area type, towns with 1,500 population and over, type of accommodation with nature of occupancy and category of population, 2006 and 2011**

House type	35 - 44 years			45 - 54 years		
	2006	2011	Change	2006	2011	Change
Total	608,948	682,362	73,414	511,762	570,257	58,495
Area type and towns						
Aggregate town area	362,140	422,549	60,409	287,631	329,324	41,693
Dublin City and suburbs	142,566	159,906	17,340	118,304	128,524	10,220
Cork City and suburbs	25,844	26,701	857	22,307	24,734	2,427
Limerick City and suburbs	11,486	12,143	657	9,659	10,289	630
Galway City and suburbs	8,322	10,038	1,716	6,877	7,418	541
Waterford City and suburbs	6,641	7,273	632	5,494	6,058	564
Towns 10,000 population and over	91,997	113,217	21,220	69,191	86,247	17,056
Towns 5,000 - 9,999 population	40,416	48,034	7,618	30,334	34,089	3,755
Towns 3,000 - 4,999 population	16,744	19,096	2,352	11,445	13,229	1,784
Towns 1,500 - 2,999 population	18,124	26,141	8,017	14,020	18,736	4,716
Aggregate rural area	246,808	259,813	13,005	224,131	240,933	16,802
Type of accommodation						
Renting	112,424	176,621	64,197	66,456	97,497	31,041
Detached house	23,419	37,447	14,028	14,532	22,234	7,702
Semi-detached house	34,620	58,196	23,576	17,774	29,248	11,474
Terraced house	26,663	37,808	11,145	18,913	24,827	5,914
Flat or apartment in a purpose-built block	17,009	30,846	13,837	8,751	14,052	5,301
Flat or apartment in part of converted house or commercial building	6,155	7,091	936	3,296	3,783	487
Other	2,685	1,956	-729	1,886	1,486	-400
Not stated	1,873	3,277	1,404	1,304	1,867	563
Not renting (incl. not stated)	496,524	505,741	9,217	445,306	472,760	27,454
Detached house	266,949	268,550	1,601	254,385	277,345	22,960
Semi-detached house	141,496	145,213	3,717	114,520	124,550	10,030
Terraced house	64,638	66,859	2,221	60,593	59,088	-1,505
Flat or apartment in a purpose-built block	10,380	16,133	5,753	5,570	5,757	187
Flat or apartment in part of converted house or commercial building	1,949	902	-1,047	1,514	757	-757
Other	2,075	880	-1,195	1,360	732	-628
Not stated	9,037	7,204	-1,833	7,364	4,531	-2,833
Category of population						
A. Persons in private households (A = B + I)	608,948	682,362	73,414	511,762	570,257	58,495
B. Persons in family households (B = C + H)	530,497	589,030	58,533	442,624	490,097	47,473
C. Members of family units (C = D + E + F + G)	520,979	579,518	58,539	436,020	482,741	46,721
D. Persons enumerated as husbands and wives (or couples)	441,851	488,482	46,631	384,363	419,506	35,143
E. Persons enumerated as lone parents	39,525	49,421	9,896	35,718	44,176	8,458
F. Children (of any age) enumerated with both parents	18,366	21,516	3,150	3,197	4,602	1,405
G. Children (of any age) enumerated with a lone parent	21,237	20,099	-1,138	12,742	14,457	1,715
H. Other persons in family households	9,518	9,512	-6	6,604	7,356	752
I. Persons in non-family households (I = J + K)	78,451	93,332	14,881	69,138	80,160	11,022
J. One person households	46,753	61,063	14,310	48,563	59,238	10,675
K. Members of multi-person households	31,698	32,269	571	20,575	20,922	347

**Table 6 (contd.) Persons in private households, classified by age group, area type, towns with 1,500 population and over, type of accommodation with nature of occupancy and category of population, 2006 and 2011**

House type	55 - 64 years			65 - 74 years		
	2006	2011	Change	2006	2011	Change
Total	394,676	452,449	57,773	247,778	291,932	44,154
Area type and towns						
Aggregate town area	217,894	252,576	34,682	139,835	165,269	25,434
Dublin City and suburbs	90,220	101,122	10,902	60,908	66,962	6,054
Cork City and suburbs	17,129	18,909	1,780	11,768	13,087	1,319
Limerick City and suburbs	7,461	8,241	780	4,965	5,686	721
Galway City and suburbs	4,989	5,896	907	3,020	3,728	708
Waterford City and suburbs	4,343	4,762	419	3,076	3,413	337
Towns 10,000 population and over	49,875	62,875	13,000	28,965	38,926	9,961
Towns 5,000 - 9,999 population	23,623	25,572	1,949	13,931	16,144	2,213
Towns 3,000 - 4,999 population	8,519	9,917	1,398	5,386	6,795	1,409
Towns 1,500 - 2,999 population	11,735	15,282	3,547	7,816	10,528	2,712
Aggregate rural area	176,782	199,873	23,091	107,943	126,663	18,720
Type of accommodation						
Renting	39,306	58,268	18,962	22,038	29,378	7,340
Detached house	8,958	13,142	4,184	5,250	7,033	1,783
Semi-detached house	8,955	14,967	6,012	4,749	7,052	2,303
Terraced house	12,210	17,352	5,142	6,189	8,566	2,377
Flat or apartment in a purpose-built block	5,465	8,451	2,986	3,813	4,700	887
Flat or apartment in part of converted house or commercial building	1,649	2,082	433	745	864	119
Other	1,158	1,089	-69	654	521	-133
Not stated	911	1,185	274	638	642	4
Not renting (incl. not stated)	355,370	394,181	38,811	225,740	262,554	36,814
Detached house	201,918	231,758	29,840	122,146	149,311	27,165
Semi-detached house	86,047	97,567	11,520	55,086	65,361	10,275
Terraced house	54,284	55,476	1,192	39,368	41,226	1,858
Flat or apartment in a purpose-built block	4,497	4,142	-355	3,302	2,874	-428
Flat or apartment in part of converted house or commercial building	1,266	723	-543	987	563	-424
Other	980	646	-334	591	379	-212
Not stated	6,378	3,869	-2,509	4,260	2,840	-1,420
Category of population						
A. Persons in private households (A = B + I)	394,676	452,449	57,773	247,778	291,932	44,154
B. Persons in family households (B = C + H)	325,472	368,152	42,680	178,883	217,055	38,172
C. Members of family units (C = D + E + F + G)	320,324	362,371	42,047	173,269	211,888	38,619
D. Persons enumerated as husbands and wives (or couples)	292,945	330,588	37,643	156,718	195,705	38,987
E. Persons enumerated as lone parents	23,443	26,962	3,519	16,220	15,742	-478
F. Children (of any age) enumerated with both parents	234	377	143	7	8	1
G. Children (of any age) enumerated with a lone parent	3,702	4,444	742	324	433	109
H. Other persons in family households	5,148	5,781	633	5,614	5,167	-447
I. Persons in non-family households (I = J + K)	69,204	84,297	15,093	68,895	74,877	5,982
J. One person households	53,395	67,134	13,739	56,038	63,166	7,128
K. Members of multi-person households	15,809	17,163	1,354	12,857	11,711	-1,146

**Table 6 (contd.) Persons in private households, classified by age group, area type, towns with 1,500 population and over, type of accommodation with nature of occupancy and category of population, 2006 and 2011**

House type	75 years and over			Average age		
	2006	2011	Change	2006	2011	Change
Total	174,467	199,236	24,769	35.1	35.6	0.5
Area type and towns						
Aggregate town area	91,615	110,885	19,270	34.3	34.8	0.5
Dublin City and suburbs	41,634	48,634	7,000	35.0	35.7	0.7
Cork City and suburbs	7,307	8,654	1,347	35.1	36.1	1.0
Limerick City and suburbs	2,984	3,593	609	33.8	35.1	1.3
Galway City and suburbs	1,970	2,415	445	32.6	33.9	1.3
Waterford City and suburbs	1,801	2,167	366	34.7	35.4	0.7
Towns 10,000 population and over	18,048	23,578	5,530	33.2	33.8	0.6
Towns 5,000 - 9,999 population	8,927	10,213	1,286	33.7	33.7	-
Towns 3,000 - 4,999 population	3,661	4,356	695	33.5	33.9	0.4
Towns 1,500 - 2,999 population	5,283	7,275	1,992	35.1	34.6	-0.5
Aggregate rural area	82,852	88,351	5,499	36.3	36.9	0.6
Type of accommodation						
Renting	16,900	20,041	3,141	28.9	29.0	0.1
Detached house	4,256	5,674	1,418	30.7	29.9	-0.8
Semi-detached house	3,493	4,416	923	26.7	26.8	0.1
Terraced house	4,192	4,896	704	28.9	29.7	0.8
Flat or apartment in a purpose-built block	3,271	3,533	262	29.6	30.0	0.4
Flat or apartment in part of converted house or commercial building	756	675	-81	31.3	32.7	1.4
Other	495	381	-114	34.3	35.9	1.6
Not stated	437	466	29	29.0	27.6	-1.4
Not renting (incl. not stated)	157,567	179,195	21,628	36.7	38.0	1.3
Detached house	85,243	97,992	12,749	36.7	37.9	1.2
Semi-detached house	35,439	43,829	8,390	35.5	37.1	1.6
Terraced house	29,393	31,836	2,443	39.4	40.9	1.5
Flat or apartment in a purpose-built block	2,688	2,426	-262	35.2	36.1	0.9
Flat or apartment in part of converted house or commercial building	867	559	-308	38.4	44.0	5.6
Other	477	270	-207	31.5	34.8	3.3
Not stated	3,460	2,283	-1,177	35.1	35.8	0.7
Category of population						
A. Persons in private households (A = B + I)	174,467	199,236	24,769	35.1	35.6	0.5
B. Persons in family households (B = C + H)	96,031	113,861	17,830	33.1	33.5	0.4
C. Members of family units (C = D + E + F + G)	82,910	102,823	19,913	33.0	33.4	0.4
D. Persons enumerated as husbands and wives (or couples)	62,823	81,905	19,082	47.3	48.1	0.8
E. Persons enumerated as lone parents	20,080	20,912	832	47.8	47.6	-0.2
F. Children (of any age) enumerated with both parents	-	-	-	13.5	13.1	-0.4
G. Children (of any age) enumerated with a lone parent	7	6	-1	17.8	17.6	-0.2
H. Other persons in family households	13,121	11,038	-2,083	37.8	38.6	0.8
I. Persons in non-family households (I = J + K)	78,436	85,375	6,939	46.2	48.1	1.9
J. One person households	65,119	73,129	8,010	56.0	55.7	-0.3
K. Members of multi-person households	13,317	12,246	-1,071	35.1	36.6	1.5

**Table 7A Persons aged 65 years and over, usually resident and present, classified by single year of age, those enumerated in private households and in communal establishments**

Age	Total	Enumerated in private households	Enumerated in communal establishments			
			Total	Nursing home	Hospital	Other (incl. not stated)
65 years	38,318	37,803	515	216	85	214
66 years	35,156	34,631	525	201	99	225
67 years	33,374	32,839	535	210	93	232
68 years	31,500	30,940	560	239	92	229
69 years	28,515	27,921	594	271	108	215
70 years	27,043	26,442	601	267	107	227
71 years	26,737	26,100	637	298	119	220
72 years	25,524	24,792	732	360	134	238
73 years	23,757	22,976	781	388	141	252
74 years	23,203	22,366	837	429	134	274
75 years	22,199	21,299	900	477	144	279
76 years	20,899	19,981	918	533	168	217
77 years	19,865	18,923	942	579	165	198
78 years	18,087	17,058	1,029	645	181	203
79 years	16,947	15,826	1,121	721	173	227
80 years	16,249	15,097	1,152	780	176	196
81 years	14,631	13,305	1,326	932	210	184
82 years	13,267	11,974	1,293	910	200	183
83 years	11,808	10,415	1,393	1,001	232	160
84 years	11,017	9,537	1,480	1,091	226	163
85 years	9,793	8,289	1,504	1,081	248	175
86 years	8,806	7,270	1,536	1,170	219	147
87 years	7,576	6,090	1,486	1,077	272	137
88 years	6,459	5,007	1,452	1,132	199	121
89 years	5,285	4,021	1,264	994	174	96
90 years	4,459	3,228	1,231	982	155	94
91 years	3,638	2,589	1,049	845	142	62
92 years	2,598	1,738	860	696	107	57
93 years	1,801	1,176	625	488	99	38
94 years	1,516	937	579	467	73	39
95 years and over	3,481	1,884	1,597	1,322	198	77
Total aged 65 years and over	513,508	482,454	31,054	20,802	4,873	5,379

**Table 7B Males aged 65 years and over, usually resident and present, classified by single year of age, those enumerated in private households and in communal establishments**

Age	Total	Enumerated in private households	Enumerated in communal establishments			
			Total	Nursing home	Hospital	Other (incl. not stated)
65 years	19,272	19,004	268	117	45	106
66 years	17,573	17,306	267	107	56	104
67 years	16,670	16,395	275	109	49	117
68 years	15,550	15,250	300	138	57	105
69 years	14,137	13,844	293	132	63	98
70 years	13,315	13,010	305	137	71	97
71 years	13,048	12,734	314	145	65	104
72 years	12,379	12,046	333	162	72	99
73 years	11,364	11,004	360	185	77	98
74 years	11,120	10,737	383	212	62	109
75 years	10,391	9,989	402	221	67	114
76 years	9,672	9,276	396	219	101	76
77 years	9,098	8,702	396	244	83	69
78 years	8,200	7,817	383	242	90	51
79 years	7,562	7,123	439	282	84	73
80 years	7,096	6,649	447	288	89	70
81 years	6,107	5,652	455	325	82	48
82 years	5,348	4,915	433	306	78	49
83 years	4,544	4,099	445	307	95	43
84 years	4,140	3,686	454	316	94	44
85 years	3,607	3,180	427	301	84	42
86 years	3,129	2,688	441	341	68	32
87 years	2,526	2,135	391	284	84	23
88 years	2,100	1,729	371	274	74	23
89 years	1,637	1,355	282	221	43	18
90 years	1,332	1,054	278	216	45	17
91 years	1,057	815	242	194	37	11
92 years	719	555	164	133	23	8
93 years	446	342	104	81	19	4
94 years	359	263	96	70	22	4
95 years and over	703	484	219	189	22	8
Total aged 65 years and over	234,201	223,838	10,363	6,498	2,001	1,864



**Table 7C Females aged 65 years and over, usually resident and present, classified by single year of age, those enumerated in private households and in communal establishments**

Age	Total	Enumerated in private households	Enumerated in communal establishments			
			Total	Nursing home	Hospital	Other (incl. not stated)
65 years	19,046	18,799	247	99	40	108
66 years	17,583	17,325	258	94	43	121
67 years	16,704	16,444	260	101	44	115
68 years	15,950	15,690	260	101	35	124
69 years	14,378	14,077	301	139	45	117
70 years	13,728	13,432	296	130	36	130
71 years	13,689	13,366	323	153	54	116
72 years	13,145	12,746	399	198	62	139
73 years	12,393	11,972	421	203	64	154
74 years	12,083	11,629	454	217	72	165
75 years	11,808	11,310	498	256	77	165
76 years	11,227	10,705	522	314	67	141
77 years	10,767	10,221	546	335	82	129
78 years	9,887	9,241	646	403	91	152
79 years	9,385	8,703	682	439	89	154
80 years	9,153	8,448	705	492	87	126
81 years	8,524	7,653	871	607	128	136
82 years	7,919	7,059	860	604	122	134
83 years	7,264	6,316	948	694	137	117
84 years	6,877	5,851	1,026	775	132	119
85 years	6,186	5,109	1,077	780	164	133
86 years	5,677	4,582	1,095	829	151	115
87 years	5,050	3,955	1,095	793	188	114
88 years	4,359	3,278	1,081	858	125	98
89 years	3,648	2,666	982	773	131	78
90 years	3,127	2,174	953	766	110	77
91 years	2,581	1,774	807	651	105	51
92 years	1,879	1,183	696	563	84	49
93 years	1,355	834	521	407	80	34
94 years	1,157	674	483	397	51	35
95 years and over	2,778	1,400	1,378	1,133	176	69
Total aged 65 years and over	279,307	258,616	20,691	14,304	2,872	3,515

**Table 8 Males and females, classified by single year of age and marital status**

Age	Males					Females				
	Total	Single	Married	Separated / Divorced*	Widowed	Total	Single	Married	Separated / Divorced*	Widowed
Under 1 year	36,850	36,850	-	-	-	35,560	35,560	-	-	-
1 year	37,230	37,230	-	-	-	35,415	35,415	-	-	-
2 years	37,153	37,153	-	-	-	35,413	35,413	-	-	-
3 years	36,382	36,382	-	-	-	35,075	35,075	-	-	-
4 years	34,461	34,461	-	-	-	32,790	32,790	-	-	-
5 years	33,199	33,199	-	-	-	31,738	31,738	-	-	-
6 years	33,534	33,534	-	-	-	31,442	31,442	-	-	-
7 years	32,829	32,829	-	-	-	31,612	31,612	-	-	-
8 years	32,578	32,578	-	-	-	31,238	31,238	-	-	-
9 years	31,897	31,897	-	-	-	30,703	30,703	-	-	-
10 years	31,514	31,514	-	-	-	29,915	29,915	-	-	-
11 years	31,114	31,114	-	-	-	29,720	29,720	-	-	-
12 years	31,430	31,430	-	-	-	29,804	29,804	-	-	-
13 years	30,717	30,717	-	-	-	29,275	29,275	-	-	-
14 years	30,301	30,301	-	-	-	28,701	28,701	-	-	-
15 years	29,416	29,389	26	1	-	27,811	27,798	11	2	-
16 years	28,577	28,558	15	4	-	27,428	27,413	12	2	1
17 years	28,600	28,560	36	3	1	27,265	27,219	41	4	1
18 years	29,107	29,000	101	6	-	27,733	27,546	176	9	2
19 years	28,562	28,403	145	13	1	28,520	28,220	280	19	1
20 years	30,178	29,897	238	21	22	29,754	29,264	444	31	15
21 years	28,773	28,351	376	31	15	29,157	28,400	685	53	19
22 years	28,506	27,992	438	60	16	29,141	27,994	1,054	67	26
23 years	28,977	28,163	737	53	24	30,482	28,631	1,719	107	25
24 years	30,202	28,960	1,141	79	22	32,061	29,317	2,523	186	35
25 years	31,407	29,257	2,025	99	26	33,835	29,574	3,949	272	40
26 years	32,844	29,566	3,092	155	31	35,242	29,283	5,564	356	39
27 years	34,313	29,556	4,510	221	26	37,478	29,070	7,824	531	53
28 years	36,781	29,751	6,774	233	23	39,985	28,597	10,700	654	34
29 years	38,369	28,810	9,085	419	55	40,868	26,859	13,104	832	73
30 years	40,573	27,931	12,041	549	52	42,041	25,030	15,904	978	129
31 years	40,544	25,478	14,339	669	58	41,189	21,719	18,118	1,238	114
32 years	38,656	21,765	16,060	777	54	40,176	19,225	19,466	1,370	115
33 years	37,590	19,507	17,154	887	42	38,407	16,604	20,160	1,519	124
34 years	37,411	17,378	18,941	1,030	62	37,358	14,777	20,789	1,665	127
35 years	37,144	15,853	20,002	1,226	63	37,142	13,298	21,821	1,838	185
36 years	37,020	14,715	20,840	1,382	83	36,950	12,398	22,325	2,019	208
37 years	36,251	13,139	21,430	1,590	92	36,285	11,257	22,455	2,342	231
38 years	36,328	12,138	22,379	1,703	108	36,291	10,652	22,873	2,533	233
39 years	35,494	10,964	22,547	1,868	115	35,356	9,649	22,747	2,705	255
40 years	35,375	10,451	22,738	2,084	102	34,972	8,780	22,900	3,008	284
41 years	34,432	9,409	22,676	2,203	144	34,058	8,133	22,467	3,149	309
42 years	32,768	8,234	22,127	2,291	116	31,964	6,948	21,352	3,349	315
43 years	32,171	7,871	21,704	2,455	141	31,993	6,571	21,540	3,506	376
44 years	31,584	7,303	21,548	2,555	178	31,495	6,112	21,162	3,781	440
45 years	31,285	7,019	21,434	2,647	185	31,413	5,702	21,392	3,784	535
46 years	31,265	6,666	21,627	2,754	218	31,915	5,671	21,557	4,108	579
47 years	30,383	6,153	21,049	2,954	227	30,986	5,071	21,190	4,105	620
48 years	29,703	5,521	20,833	3,111	238	30,079	4,585	20,676	4,153	665
49 years	28,880	5,503	20,193	2,912	272	29,276	4,260	20,167	4,052	797

\* Including deserted

**Table 8 (contd.) Males and females, classified by single year of age and marital status**

Age	Males					Females				
	Total	Single	Married	Separated / Divorced*	Widowed	Total	Single	Married	Separated / Divorced*	Widowed
50 years	29,167	5,263	20,481	3,091	332	29,274	4,026	20,306	4,091	851
51 years	27,888	4,879	19,697	2,957	355	28,238	3,848	19,414	4,061	915
52 years	27,014	4,427	19,171	3,029	387	27,040	3,443	18,724	3,833	1,040
53 years	26,489	4,317	18,844	2,904	424	26,957	3,433	18,605	3,801	1,118
54 years	26,179	4,097	18,601	3,012	469	26,140	3,188	18,136	3,627	1,189
55 years	25,296	3,958	17,953	2,876	509	25,435	3,055	17,720	3,387	1,273
56 years	25,094	3,891	17,919	2,727	557	25,381	2,951	17,712	3,248	1,470
57 years	24,252	3,731	17,297	2,640	584	24,222	2,767	16,827	3,164	1,464
58 years	24,287	3,678	17,504	2,471	634	24,353	2,592	17,113	2,901	1,747
59 years	23,192	3,462	16,639	2,419	672	23,010	2,366	16,160	2,716	1,768
60 years	22,906	3,423	16,477	2,278	728	22,459	2,269	15,740	2,477	1,973
61 years	22,199	3,365	15,877	2,138	819	22,566	2,274	15,668	2,387	2,237
62 years	22,127	3,291	15,847	2,081	908	21,973	2,167	15,233	2,257	2,316
63 years	21,679	3,168	15,644	1,928	939	21,445	2,047	14,919	2,016	2,463
64 years	20,958	2,916	15,347	1,689	1,006	20,474	1,918	13,945	1,813	2,798
65 years	19,967	2,708	14,590	1,556	1,113	19,867	1,950	13,357	1,540	3,020
66 years	18,209	2,520	13,195	1,442	1,052	18,373	1,794	12,059	1,396	3,124
67 years	17,325	2,437	12,576	1,241	1,071	17,436	1,720	11,314	1,177	3,225
68 years	16,125	2,318	11,710	1,032	1,065	16,658	1,606	10,474	1,071	3,507
69 years	14,672	2,087	10,546	940	1,099	15,006	1,476	9,155	905	3,470
70 years	13,842	2,100	9,763	811	1,168	14,323	1,516	8,362	771	3,674
71 years	13,561	2,064	9,586	739	1,172	14,261	1,462	8,095	652	4,052
72 years	12,822	1,944	8,983	662	1,233	13,683	1,446	7,496	561	4,180
73 years	11,761	1,864	8,162	500	1,235	12,876	1,447	6,604	512	4,313
74 years	11,490	1,865	7,772	487	1,366	12,571	1,466	6,113	403	4,589
75 years	10,771	1,763	7,299	400	1,309	12,325	1,517	5,516	361	4,931
76 years	10,017	1,743	6,580	346	1,348	11,717	1,459	4,917	287	5,054
77 years	9,444	1,617	6,138	303	1,386	11,199	1,426	4,343	240	5,190
78 years	8,532	1,503	5,470	241	1,318	10,330	1,404	3,536	203	5,187
79 years	7,867	1,449	4,838	189	1,391	9,834	1,406	3,171	150	5,107
80 years	7,370	1,365	4,494	159	1,352	9,584	1,330	2,770	128	5,356
81 years	6,374	1,244	3,725	129	1,276	8,957	1,396	2,326	117	5,118
82 years	5,589	1,138	3,161	94	1,196	8,304	1,288	1,897	75	5,044
83 years	4,765	955	2,592	78	1,140	7,613	1,182	1,495	81	4,855
84 years	4,325	841	2,245	79	1,160	7,232	1,159	1,202	67	4,804
85 years	3,759	776	1,888	52	1,043	6,488	1,121	934	56	4,377
86 years	3,264	671	1,547	40	1,006	5,985	1,032	833	33	4,087
87 years	2,645	544	1,220	29	852	5,330	943	614	34	3,739
88 years	2,200	445	941	22	792	4,654	812	476	23	3,343
89 years	1,723	341	693	16	673	3,839	668	326	22	2,823
90 years	1,405	291	533	8	573	3,313	585	231	21	2,476
91 years	1,124	267	405	15	437	2,735	508	189	19	2,019
92 years	763	159	275	8	321	2,000	391	119	9	1,481
93 years	477	86	176	3	212	1,450	274	86	3	1,087
94 years	386	76	110	3	197	1,224	247	43	7	927
95 years	272	62	71	1	138	894	180	37	8	669
96 years	178	36	44	3	95	632	148	21	2	461
97 years	119	23	31	1	64	519	100	11	2	406
98 years	64	16	14	-	34	317	70	9	1	237
99 years	49	14	8	2	25	219	46	9	2	162
100 years and over	58	14	7	2	35	331	66	8	1	256
Total	2,272,699	1,285,612	855,087	88,918	43,082	2,315,553	1,199,013	853,517	115,046	147,977

\* Including deserted

**Table 9 Persons in each town with 1,500 population and over, classified by age group**

Town	Total	Age group				
		0 - 14 years	15 - 24 years	25 - 44 years	45 - 64 years	65 years and over
Dublin City and suburbs	1,110,627	206,535	153,873	387,797	236,337	126,085
Other Cities	418,333	76,386	65,921	139,379	89,155	47,492
Cork City and suburbs	198,582	35,908	30,062	64,145	44,602	23,865
Limerick City and suburbs	91,454	17,177	15,496	29,742	18,960	10,079
Galway City and suburbs	76,778	12,766	13,514	28,806	14,524	7,168
Waterford City and suburbs	51,519	10,535	6,849	16,686	11,069	6,380
Towns 10,000 population and over	730,415	165,262	93,059	248,790	152,391	70,913
Drogheda	38,578	9,280	4,479	13,369	7,714	3,736
Dundalk	37,816	8,350	5,474	11,573	8,045	4,374
Swords	36,924	8,491	4,767	14,449	7,279	1,938
Bray	31,872	6,374	4,258	9,926	7,698	3,616
Navan (An Uaimh)	28,559	7,610	3,162	10,689	5,087	2,011
Ennis	25,360	5,719	2,770	8,590	5,410	2,871
Kilkenny	24,423	4,870	2,965	8,378	5,443	2,767
Tralee	23,693	4,787	3,320	7,269	5,247	3,070
Carlow	23,030	5,146	3,355	8,089	4,270	2,170
Droichead Nua	21,561	5,366	2,558	7,666	4,261	1,710
Naas	20,713	4,676	2,424	7,243	4,601	1,769
Athlone	20,153	4,114	3,068	7,142	3,751	2,078
Portlaoise	20,145	4,951	2,429	7,793	3,543	1,429
Mullingar	20,103	4,712	2,440	7,014	3,933	2,004
Wexford	20,072	3,825	2,328	6,352	4,684	2,883
Balbriggan	19,960	6,035	1,972	7,933	3,100	920
Letterkenny	19,588	4,382	2,927	6,725	3,819	1,735
Celbridge	19,537	4,979	2,575	6,701	4,357	925
Sligo	19,452	3,134	3,598	5,795	4,292	2,633
Clonmel	17,908	3,509	2,181	5,548	4,337	2,333
Greystones	17,468	4,134	2,046	5,607	3,910	1,771
Malahide	15,846	3,225	2,155	4,275	4,223	1,968
Leixlip	15,452	3,328	2,131	4,783	4,018	1,192
Carrigaline	14,775	4,016	1,713	5,267	2,991	788
Tullamore	14,361	3,243	1,746	4,868	2,978	1,526
Killarney	14,219	2,498	1,351	5,014	3,146	2,210
Arklow	13,009	3,037	1,557	4,312	2,764	1,339
Maynooth	12,510	2,369	2,835	4,450	2,220	636
Cobh	12,347	2,992	1,479	4,098	2,592	1,186

**Table 9 (contd.) Persons in each town with 1,500 population and over, classified by age group**

Town	Total	Age group				
		0 - 14 years	15 - 24 years	25 - 44 years	45 - 64 years	65 years and over
Towns 10,000 population and over (contd.)						
Castlebar	12,318	2,533	1,631	4,037	2,675	1,442
Midleton	12,001	3,082	1,252	4,524	2,067	1,076
Mallow	11,605	2,616	1,256	3,985	2,399	1,349
Ashbourne	11,355	2,671	1,393	4,719	2,108	464
Ballina	11,086	2,490	1,304	3,418	2,525	1,349
Laytown-Bettystown-Mornington	10,889	3,039	1,010	3,935	2,061	844
Enniscorthy	10,838	2,297	1,426	3,417	2,318	1,380
Wicklow	10,356	2,438	1,312	3,078	2,441	1,087
Tramore	10,328	2,589	1,114	3,130	2,297	1,198
Cavan	10,205	2,355	1,298	3,629	1,787	1,136
Towns 5,000 - 9,999 population	297,174	70,212	34,140	102,082	60,665	30,075
Athy	9,926	2,570	1,041	3,493	1,808	1,014
Shannon	9,673	2,144	1,251	3,276	2,050	952
Skerries	9,671	2,336	1,220	2,653	2,446	1,016
Longford	9,601	2,214	1,188	3,063	1,985	1,151
Dungarvan	9,427	1,980	1,119	2,947	2,081	1,300
Portmarnock	9,285	1,633	1,132	2,700	2,708	1,112
Rush	9,231	2,298	1,124	3,091	1,958	760
Gorey	9,114	2,259	1,031	3,264	1,695	865
Ratoath	9,043	3,017	894	3,432	1,387	313
Nenagh	8,439	1,746	924	3,016	1,658	1,095
Trim	8,268	1,959	1,009	2,798	1,730	772
Tuam	8,242	1,820	864	2,956	1,619	983
New Ross	8,151	1,808	997	2,671	1,749	926
Kildare	8,142	2,117	1,007	3,091	1,410	517
Thurles	7,933	1,517	992	2,339	1,848	1,237
Youghal	7,794	1,603	831	2,387	1,863	1,110
Portarlinton	7,788	2,117	834	2,911	1,370	556
Monaghan	7,452	1,471	934	2,523	1,645	879
Lusk	7,022	2,079	570	3,071	993	309
Edenderry	6,977	1,787	818	2,448	1,376	548
Dunboyne	6,959	1,960	986	2,128	1,512	373
Buncrana	6,839	1,625	900	2,048	1,474	792
Donabate	6,778	2,145	659	2,527	1,200	247
Clane	6,702	1,727	730	2,648	1,219	378

**Table 9 (contd.) Persons in each town with 1,500 population and over, classified by age group**

Town	Total	Age group				
		0 - 14 years	15 - 24 years	25 - 44 years	45 - 64 years	65 years and over
Towns 5,000 - 9,999 population (contd.)						
Ballinasloe	6,659	1,435	759	1,931	1,488	1,046
Bandon	6,640	1,409	760	2,286	1,454	731
Fermoy	6,489	1,416	760	2,241	1,313	759
Newcastle West	6,327	1,287	691	2,325	1,191	833
Westport	6,063	1,003	618	2,001	1,418	1,023
Carrick-on-Suir	5,931	1,245	744	1,663	1,489	790
Kells (Ceanannas)	5,888	1,396	661	2,006	1,210	615
Birr	5,822	1,280	715	1,748	1,326	753
Kinsealy-Drinan	5,814	1,384	615	2,939	791	85
Passage West	5,790	1,361	685	1,896	1,311	537
Roscommon	5,693	1,262	588	1,834	1,152	857
Kilcock	5,533	1,552	549	2,372	810	250
Roscrea	5,403	1,218	678	1,730	1,074	703
Tipperary	5,310	998	645	1,595	1,290	782
Sallins	5,283	1,600	519	2,290	724	150
Loughrea	5,062	1,037	570	1,799	951	705
Blessington	5,010	1,397	528	1,945	889	251
Towns 3,000 - 4,999 population	119,705	27,678	13,111	42,134	23,654	13,128
Ardee	4,927	1,009	631	1,551	1,068	668
Carrickmacross	4,925	1,031	565	1,745	1,032	552
Kinsale	4,893	993	459	1,669	1,094	678
Ballybofey-Stranorlar	4,852	1,086	575	1,525	1,018	648
Listowel	4,832	976	534	1,417	1,133	772
Oranmore	4,799	1,138	360	2,404	662	235
Mountmellick	4,735	1,197	544	1,517	903	574
Clonakilty	4,721	977	509	1,527	989	719
Carrigtwohill	4,551	1,261	364	2,193	555	178
Cashel	4,051	865	448	1,397	829	512
Kilcoole	4,049	1,071	506	1,330	859	283
Duleek	3,988	1,136	412	1,520	664	256
Carrick-on-Shannon	3,980	803	444	1,590	696	447
Tullow	3,972	937	447	1,392	768	428
Athenry	3,950	990	390	1,654	596	320
Dunshaughlin	3,903	1,034	509	1,237	880	243
Macroom	3,879	864	381	1,288	791	555

**Table 9 (contd.) Persons in each town with 1,500 population and over, classified by age group**

Town	Total	Age group				
		0 - 14 years	15 - 24 years	25 - 44 years	45 - 64 years	65 years and over
Towns 3,000 - 4,999 population (contd.)						
Monasterevan	3,710	876	421	1,333	759	321
Mitchelstown	3,677	774	397	1,133	836	537
Rathluirc (or Charleville)	3,672	742	433	1,216	734	547
Castleblayney	3,634	701	487	1,186	737	523
Cahir	3,578	749	435	1,200	793	401
Kilcullen	3,473	946	332	1,363	566	266
Rathcoole	3,421	666	356	1,244	705	450
Claremorris	3,412	721	449	1,147	660	435
Bantry	3,348	621	363	893	832	639
Tower	3,306	940	372	1,024	726	244
Clara	3,242	778	430	967	701	366
Stamullen	3,130	1,064	230	1,369	385	82
Kill	3,095	732	328	1,103	683	249
Towns 1,500 - 2,999 population	170,628	39,679	18,565	57,059	35,038	20,287
Rathnew	2,964	836	306	1,206	476	140
Muinebeag	2,950	602	377	836	750	385
Enfield	2,929	873	309	1,262	387	98
Courtown Harbour	2,857	697	297	999	555	309
Annacotty	2,856	663	301	1,274	480	138
Moate	2,731	614	306	1,002	510	299
Ballinrobe	2,704	663	263	1,055	432	291
Kilrush	2,695	510	299	655	723	508
Skibbereen	2,670	508	270	856	573	463
Kinnegad	2,662	824	266	1,025	409	138
Newcastle	2,659	641	192	1,165	459	202
Gort	2,644	549	315	945	501	334
Donegal	2,607	422	309	778	622	476
Boyle	2,588	472	274	692	644	506
Ballyjamesduff	2,568	701	309	989	410	159
Carndonagh	2,534	615	293	735	534	357
Bailieborough	2,530	609	299	815	499	308
Castleisland	2,513	509	278	760	600	366
Sixmilebridge	2,507	699	241	979	463	125
Ballyshannon	2,503	445	286	625	673	474
Ballina (North Tipperary)	2,442	737	196	901	444	164

**Table 9 (contd.) Persons in each town with 1,500 population and over, classified by age group**

Town	Total	Age group				
		0 - 14 years	15 - 24 years	25 - 44 years	45 - 64 years	65 years and over
Towns 1,500 - 2,999 population (contd.)						
Blarney	2,437	509	275	766	586	301
Newtownmountkennedy	2,410	606	275	828	502	199
Athboy	2,397	618	295	769	475	240
Rathangan	2,374	634	244	891	419	186
Callan	2,330	517	248	755	477	333
Kingscourt	2,326	654	258	835	379	200
Ballyhaunis	2,312	587	267	807	434	217
Virginia	2,282	572	264	735	443	268
Thomastown	2,273	494	253	723	455	348
Kanturk	2,263	449	232	705	518	359
Prosperous	2,248	668	242	714	438	186
Kenmare	2,175	458	201	687	495	334
Saggart	2,144	483	217	1,082	254	108
Bundoran	2,140	397	267	626	518	332
Cootehill	2,123	386	291	663	512	271
Crosshaven	2,093	502	213	641	491	246
Killorglin	2,082	408	267	710	424	273
Templemore	2,071	362	247	563	534	365
Baltinglass	2,061	521	242	662	421	215
Clifden	2,056	394	196	722	457	287
Bunclody-Carrickduff	2,012	471	263	602	382	294
Abbeyfeale	2,007	429	259	627	420	272
Clogherhead	1,993	600	205	744	312	132
Castlerea	1,985	297	223	509	485	471
An Daingean	1,965	306	202	632	529	296
Castleconnell	1,917	482	151	672	410	202
Bearna	1,878	485	188	575	456	174
Balrothery	1,866	574	182	740	276	94
Abbeyleix	1,827	436	167	519	410	295
Ballaghaderreen	1,822	374	228	521	419	280
Enniskerry	1,811	422	282	417	483	207
Newport	1,806	508	147	709	286	156
Dunleer	1,786	452	171	681	300	182
Newmarket-on-Fergus	1,773	312	231	579	424	227
Clones	1,761	271	210	471	466	343
Tubbercurry	1,747	399	187	623	316	222
Edgeworthstown	1,744	466	217	606	269	186



**Table 9 (contd.) Persons in each town with 1,500 population and over, classified by age group**

Town	Total	Age group				
		0 - 14 years	15 - 24 years	25 - 44 years	45 - 64 years	65 years and over
Towns 1,500 - 2,999 population (contd.)						
Ballivor	1,727	579	182	628	253	85
Castlebridge	1,726	449	176	580	354	167
Portlao	1,696	413	191	563	315	214
Mountrath	1,661	409	215	491	345	201
Lifford	1,658	405	235	499	337	182
Banagher	1,653	337	218	475	391	232
Kilmallock	1,635	371	187	470	407	200
Strandhill	1,596	362	139	546	341	208
Rathdrum	1,586	368	172	491	327	228
Dunmanway	1,585	341	187	444	366	247
Millstreet	1,574	269	154	549	361	241
Ballymahon	1,563	392	159	546	310	156
Cloyne	1,562	423	98	693	237	111
Dunmore East	1,559	341	172	479	401	166
Moycullen	1,559	370	166	516	358	149
Bunbeg-Derrybeg	1,553	304	145	381	374	349
Rathkeale	1,550	336	191	436	353	234
Rosslare	1,547	333	133	407	376	298
Graiguenamanagh-Tinnahinch	1,543	325	159	414	366	279
Derrinturn	1,541	462	172	545	272	90
Fethard	1,541	299	204	459	363	216
Ballymote	1,539	340	160	481	305	253
Rathcormac	1,534	451	114	755	161	53
Portumna	1,530	308	143	546	346	187
Aggregate town area	2,846,882	585,752	378,669	977,241	597,240	307,980
Towns 1,000 - 1,499 population	93,016	21,525	10,031	30,249	19,766	11,445
Total towns 500 - 999 population	123,200	28,742	13,836	38,097	27,177	15,348
Towns under 500 population but with at least 50 inhabited houses	116,236	26,687	13,225	34,897	26,767	14,660
Remainder of country	1,408,918	316,884	164,489	369,656	371,929	185,960
Aggregate rural area	1,741,370	393,838	201,581	472,899	445,639	227,413
State	4,588,252	979,590	580,250	1,450,140	1,042,879	535,393



# **APPENDICES**



# Appendix 1

## Background Notes

A Census of Population was taken on the night of Sunday, 10 April 2011, in accordance with the Statistics (Census of Population) Order 2010 (S.I. No. 207 of 2010)<sup>1</sup>. This report looks at the age profile of Ireland in 2011 and examines topics such as the urban/rural divide, the age structure by county, young and old age dependencies and the sex ratio.

### Coverage of the Census

The census figures relate to the *de facto* population i.e. the population recorded for each area represents the total of all persons present within its boundaries on the night of Sunday, 10 April 2011, together with all persons who arrived in that area on the morning of Monday, 11 April 2011, not having been enumerated elsewhere. Persons on board ships in port are included with the population of adjacent areas. The figures, therefore, include visitors present on Census Night as well as those in residence, while usual residents temporarily absent from the area are excluded.

The date of the census was chosen to coincide with a period when passenger movements were at a minimum and, consequently, the figures closely approximate to those for the normally resident population. Members of the Defence Forces who, on Census Night, were serving abroad with the United Nations were excluded from the enumeration.

### Conduct of the Census

A temporary field force consisting of 6 Census Liaison Officers, 44 Regional Supervisors, 438 Field Supervisors and some 4,854 part-time enumerators carried out the census enumeration. During the four weeks before Census Day the enumerators entered details in respect of 2 million private residences and communal establishments in their enumerator record books. They simultaneously delivered blank census questionnaires to 1.65 million of these dwellings that were expected to be occupied on Census Night. Approximately 290,000 residences were vacant at the time of the census, while in the remaining cases the household was either enumerated elsewhere or temporarily absent from the State. The collection of completed questionnaires took place between Monday 11 April and Friday 13 May, 2011.

**The Central Statistics Office (CSO) wishes to record its appreciation of the public-spirited co-operation received from households and the work carried out by the census field force.**

---

<sup>1</sup> The Statistics (Census of Population) Order 2010 was made by the Taoiseach in pursuance of powers conferred on him by section 25 (1) of the Statistics Act 1993 (No. 21 of 1993).

## Appendix 2

### Definitions

#### Aggregate Town and Aggregate Rural Areas

The term Aggregate Town Area refers to towns (including environs of legal towns) with a total population of 1,500 or more. The term Aggregate Rural Area refers to the population outside Aggregate Town areas and includes the population of towns with a population of less than 1,500 persons.

#### Regional Authorities

The geographical sub-divisions used in Figure 24 on page 17 are based on Regional Authority Areas and correspond to the NUTS3 regions used by Eurostat. These eight regions were established under the Local Government Act, 1991, Regional Authorities Establishment Order, 1993 which came into operation on 1 January 1994. Two further Regional Authorities known as Regional Assemblies were established in 1999 under the Local Government Act, 1991, Regional Authorities Establishments Order, 1999 (S.I. 226 of 1999 refers). These assemblies are based on the Existing Regional Authority Structure and correspond to the NUTS2 regions used by Eurostat. They are groupings of the NUTS3 Regions as set out below.

Regional Assembly	Regional Authority	Constituent Counties	Type of Area
Border, Midland and Western	Border	Cavan	Administrative County
		Donegal	Administrative County
		Leitrim	Administrative County
		Louth	Administrative County
		Monaghan	Administrative County
		Sligo	Administrative County
	Midland	Laois	Administrative County
		Longford	Administrative County
		Offaly	Administrative County
		Westmeath	Administrative County
	West	Galway	City
		Galway	Administrative County
		Mayo	Administrative County
		Roscommon	Administrative County
Southern and Eastern	Dublin	Dublin	City
		Dún Laoghaire-Rathdown	Administrative County
		Fingal	Administrative County
		South Dublin	Administrative County
	Mid-West	Clare	Administrative County
		Limerick	City
		Limerick	Administrative County
		North Tipperary	Administrative County
	Mid-East	Kildare	Administrative County
		Meath	Administrative County
		Wicklow	Administrative County

South-East	Carlow	Administrative County
	Kilkenny	Administrative County
	South Tipperary	Administrative County
	Waterford	City
	Waterford	Administrative County
South-West	Wexford	Administrative County
	Cork	City
	Cork	Administrative County
	Kerry	Administrative County

---

For the 1991 and previous censuses, the geographical sub-divisions used were Planning Regions.

## Appendix 3

### Census 2011 Publication Schedule

Description	Publication Date
<b>Preliminary Report</b>	30 June 2011
<b>This is Ireland</b> , Highlights from Census 2011 Part 1 ( <i>formerly Principal Demographic Results</i> )	29 March 2012
<b>Population by Area</b> ( <i>formerly Volume One</i> )	26 April 2012
<b>Profile 1 Town and Country</b> – Population distribution and movements	26 April 2012
<b>Profile 2 Older and Younger</b> – An age profile of Ireland	24 May 2012
<b>This is Ireland</b> Highlights from Census 2011 Part 2 ( <i>formerly Principal Socio Economic Results</i> )	28 June 2012
<b>*Small Area Population Statistics (SAPS)</b> – All variables	TBA
<b>Profile 3 At Work</b> – Employment, occupations and industry in Ireland	26 July 2012
<b>Profile 4 The Roof over our Heads</b> – Housing in Ireland	30 August 2012
<b>Profile 5 Households and Families</b> – Living arrangements in Ireland	20 September 2012
<b>Profile 6 Migration and Diversity</b> – A profile of diversity in Ireland	4 October 2012
<b>Profile 7 Irish Travellers and Ethnicity and Religion</b> – Ethnic and cultural background in Ireland	18 October 2012
<b>Profile 8 Our Bill of Health</b> – Health, disability and carers in Ireland	1 November 2012
<b>Profile 9 What we know</b> - A Study of education and skills in Ireland	22 November 2012
<b>Profile 10 Door to Door</b> – Commuting in Ireland	13 December 2012

*\*Small Area Population Statistics (SAPS) will be made available as interactive tables, free of charge on the CSO website*



## **Appendix 4**

### **Census 2011 Questionnaire**

The attached extract is taken from the household form used in the 2011 Census. The household form covers 6 persons and consists of 24 pages. The attached extract covers persons 1 and 2 only. The layouts for persons 3 to 6 are identical to that for person 2, apart from the relationship question (Q3).